

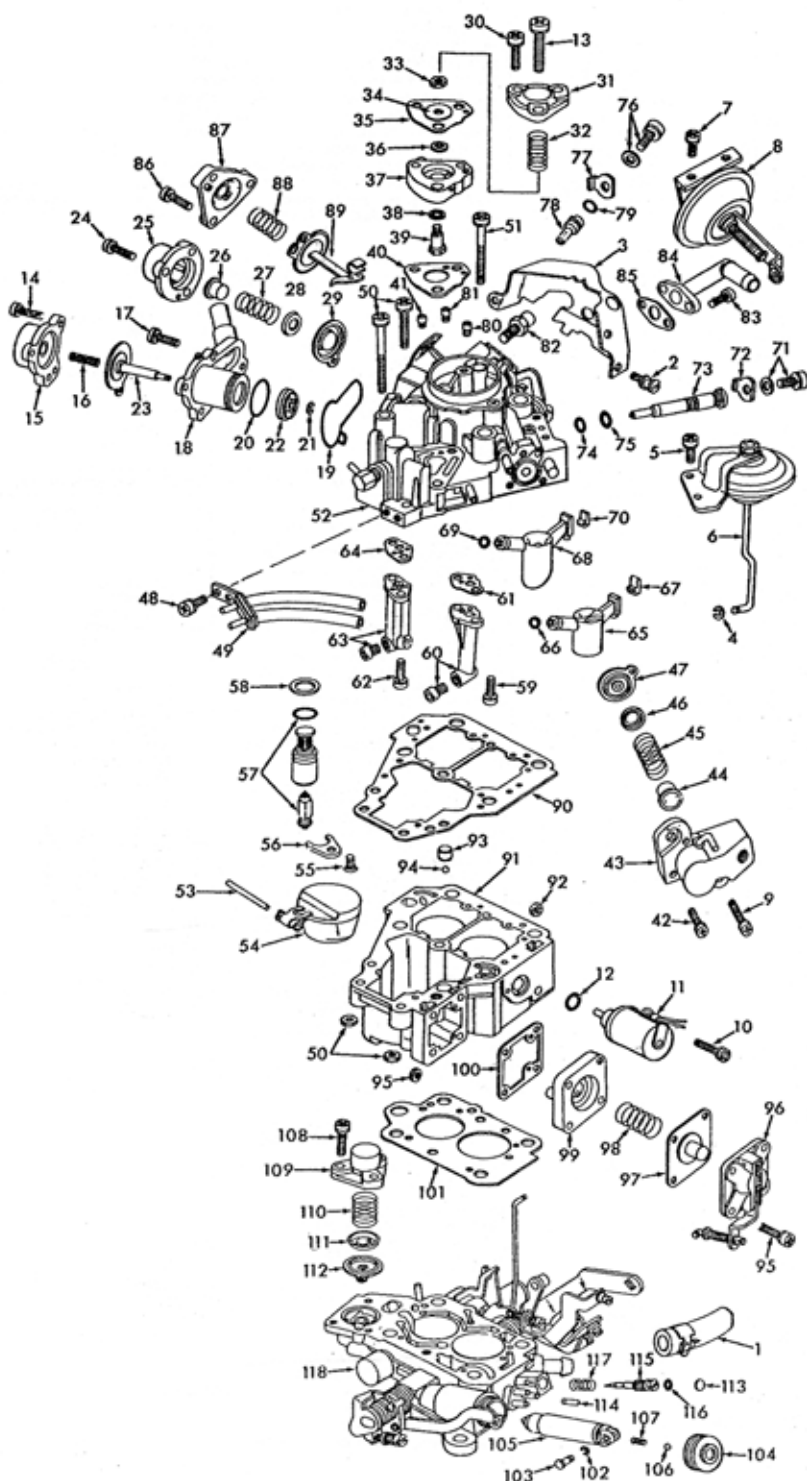
INSTRUCTION SHEET

OFF VEHICLE CARBURETOR SERVICE

(MIKUNI) SOLEX-MODEL 32-35 DIDTA

50-605-1

GENERAL EXPLODED VIEW
THE GENERAL DESIGN AND PARTS SHOWN WILL VARY TO
INDIVIDUAL UNITS COVERED ON THIS INSTRUCTION SHEET



DISASSEMBLY

USE EXPLODED VIEW AS A GUIDE. THE NUMERICAL SEQUENCE MAY GENERALLY BE FOLLOWED TO DISASSEMBLE UNIT FAR ENOUGH TO PERMIT CLEANING AND INSPECTION. (CAUTION: NOT ALL DIAPHRAGMS ARE REPAIR KIT REPLACEMENT PARTS. HANDLE CAREFULLY, THEY WILL BE USED OVER) TO REMOVE TAMPER RESISTANT CHOKE COVER, GRIND OR FILE OFF THE 2 ROLLED OVER SCREW HEADS. SAW A SCREWDRIVER SLOT IN THE 3 BREAKAWAY SCREW HEADS. REMOVE SCREWS & COVER. SCREEN & SHIM FROM NEEDLE SEAT WILL BE USED OVER. RECORD SIZES OF ALL JETS & THEIR LOCATION. TO REMOVE UPPER WATER PIPE & CHOKE BREAKER DIAPHRAGM. REMOVE UPPER GEAR BRACKET SCREW TO WASHERS (82). DO NOT REMOVE LOWER SCREW. RAISE BRACKET JUST FAR ENOUGH TO GAIN ACCESS TO WATER PIPE SCREWS. DO NOT DISENGAGE PLASTIC GEAR. REMOVE CHOKE BREAKER PARTS. TO REMOVE IDLE ADJUSTING NEEDLE PLUG, DRILL SMALL HOLE IN PLUG, THEN PULL OUT WITH AN EASY OUT. USING A PIN PUNCH DRIVE ROLL PIN OUT. BEFORE REMOVING IDLE ADJUSTING NEEDLE (115), TURN IN COUNTING THE NUMBER OF TURNS IT TAKES TO LIGHTLY SEAT NEEDLE AND RECORD FOR REASSEMBLY.

NOMENCLATURE

REF. NO.	REF. NO.
1. WATER HOSE & CLAMP	57. NEEDLE & SEAT ASSY. W/SCREEN
2. SCREW (3) - COVER	58. SHIM - NEEDLE SEAT (USE OVER)
3. COVER - TAMPER RESISTANT	59. SCREW & LOCKWASHER (2) - PRIMARY PEDESTAL
4. E-CLIP - THROTTLE OPENER LINK	60. PRIMARY MAIN JET & PEDESTAL ASSY.
5. SCREW & LOCKWASHER (2) - THROTTLE OPENER BRACKET	61. GASKET - PRI. PEDESTAL
6. THROTTLE OPENER & BRACKET ASSY.	62. SCREW & LOCKWASHER (2) - SECONDARY PEDESTAL
7. SCREW & LOCKWASHER (2) - SECONDARY VACUUM ASSY.	63. SECONDARY MAIN JET & PEDESTAL ASSY.
8. SECONDARY VACUUM UNIT ASSY.	64. GASKET - SEC. PEDESTAL
9. SCREW & LOCKWASHER - GRD. LEAD	65. VENTURI - PRIMARY
10. SCREW & LOCKWASHER - FUEL CUT OFF SOLENOID	66. O-RING - VENTURI
11. SOLENOID ASSY. - FUEL CUT OFF	67. RETAINER - VENTURI
12. O-RING - FUEL CUT OFF SOLENOID	68. VENTURI - SECONDARY
13. SCREW & LOCKWASHER - GRD. LEAD & WIRE BRACKET	69. O-RING - VENTURI
14. SCREW & LOCKWASHER (3) - BOWL VENT SOLENOID	70. RETAINER - VENTURI
15. SOLENOID ASSY. - BOWL VENT	71. SCREW & WASHERS - LOCK
16. SPRING - BOWL VENT SOLENOID	72. LOCK - PRIMARY PILOT JET
17. SCREW & LOCKWASHER - BOWL VENT HOUSING	73. JET - PRIMARY PILOT
18. BOWL VENT HOUSING ASSY.	74. O-RING - INNER (PRI. JET)
19. SEAL - VENT VALVE HOUSING	75. O-RING - OUTER (PRI. JET)
20. O-RING - VENT VALVE HOUSING	76. SCREW & WASHERS - LOCK
21. E-CLIP - VENT VALVE	77. LOCK - SECONDARY PILOT JET
22. VENT VALVE	78. JET - SECONDARY PILOT
23. DIAPHRAGM - VENT VALVE	79. O-RING - SEC. PILOT JET
24. SCREW & LOCKWASHER (3) - COASTING AIR VALVE	80. JET - PRIMARY AIR BLEED
25. COVER - C.A.V.	81. JET - SECONDARY AIR BLEED
26. SLEEVE - C.A.V. SPRING	82. SCREW & WASHERS - BRACKET UPPER
27. SPRING - C.A.V.	83. SCREW & LOCKWASHERS (2) - WATER PIPE
28. RETAINER - C.A.V. SPRING	84. PIPE - WATER
29. DIAPHRAGM - C.A.V.	85. GASKET - WATER PIPE
30. SCREW & LOCKWASHER (2) - ENRICHMENT VALVE	86. SCREW & LOCKWASHER (3) - COVER
31. COVER - ENRICHMENT VALVE	87. COVER - CHOKE BREAKER
32. SPRING - DIAPHRAGM RETURN	88. SPRING - CHOKE BREAKER DIAPHRAGM
33. NUT - VALVE STEM	89. DIAPHRAGM ASSY. - CHOKE BREAKER
34. WASHER (2) - DIAPHRAGM	90. GASKET - BOWL COVER
35. DIAPHRAGM - ENRICHMENT VALVE	91. BOWL ASSY. - FUEL
36. WASHER - STEM (FIBER)	92. NUT - BOWL CAVITY
37. HOUSING - ENRICHMENT VALVE	93. WEIGHT - PUMP CHECK BALL
38. VALVE (RUBBER) - ENRICHMENT	94. BALL - PUMP CHECK
39. STEM - ENRICHMENT VALVE	95. SCREW & NUT (4) - PUMP COVER
40. GASKET - VALVE MOUNTING	96. COVER, LEVER, & LINK ASSY. - PUMP
41. JET - ENRICHMENT	97. DIAPHRAGM ASSY. - PUMP
42. SCREW & LOCKWASHER (2) - AIR SWITCHING VALVE	98. SPRING - DIAPHRAGM
43. COVER - A.S.V.	99. HOUSING - INLET CHECK BALL
44. SLEEVE - A.S.V. SPRING	100. GASKET - HOUSING
45. SPRING - A.S.V.	101. GASKET - THROTTLE BODY
46. RETAINER - A.S.V. SPRING	102. E-CLIP PIN
47. DIAPHRAGM - A.S.V.	103. PIN - SUB. EGR VALVE
48. SCREW & LOCKWASHER (2) - VACUUM HOSE CONNECTOR	104. BOOT - EGR VALVE
49. VACUUM HOSES & CONNECTOR ASSY.	105. VALVE - EGR
50. SCREW & LOCKWASHER & NUT (3) - BOWL COVER	106. BALL - EGR VALVE
51. SCREW & LOCKWASHER (2) - BOWL COVER (CENTER)	107. SPRING - BALL
52. BOWL COVER ASSY.	108. SCREW & LOCKWASHER (3) - COVER
53. PIN - FLOAT	109. COVER - JET AIR CONTROL VALVE
54. FLOAT & LEVER ASSY.	110. SPRING - J.A.C.V.
55. SCREW & LOCKWASHER - NEEDLE SEAT RETAINER	111. RETAINER - SPRING
56. RETAINER - NEEDLE SEAT	112. DIAPHRAGM - J.A.C.V.
	113. PLUG - IDLE NEEDLE CONCEALMENT
	114. PIN - IDLE NEEDLE
	115. NEEDLE - IDLE ADJUSTING
	116. O-RING - IDLE ADJ. NEEDLE
	117. SPRING - IDLE ADJ. NEEDLE
	118. THROTTLE BODY ASSY.

CLEANING

CLEANING MUST BE DONE WITH CARBURETOR DISASSEMBLED. DO NOT SOAK IN CARB. CLEANER! CLEAN ALL THE PASSAGES & BODIES OF THE CARBURETOR WITH SPRAY CARBURETOR CLEANER. MAKE CERTAIN THE THROTTLE BODY IS FREE OF ALL CARBON DEPOSITS. WASH OFF IN SUITABLE SOLVENT. BLOW OUT ALL PASSAGES AND JETS IN CASTINGS WITH COMPRESSED AIR AND CHECK CAREFULLY TO INSURE THOROUGH CLEANING OF OBSCURE AREAS. CAUTION: DO NOT USE CLEANING FLUIDS ON SOLENOIDS, DIAPHRAGMS, RUBBER PARTS, FLOAT OR SWITCHES.

REASSEMBLY

REASSEMBLE IN REVERSE ORDER OF DISASSEMBLY. NOTE SPECIAL INSTRUCTIONS AND ADJUSTMENTS.

SPECIAL INSTRUCTIONS

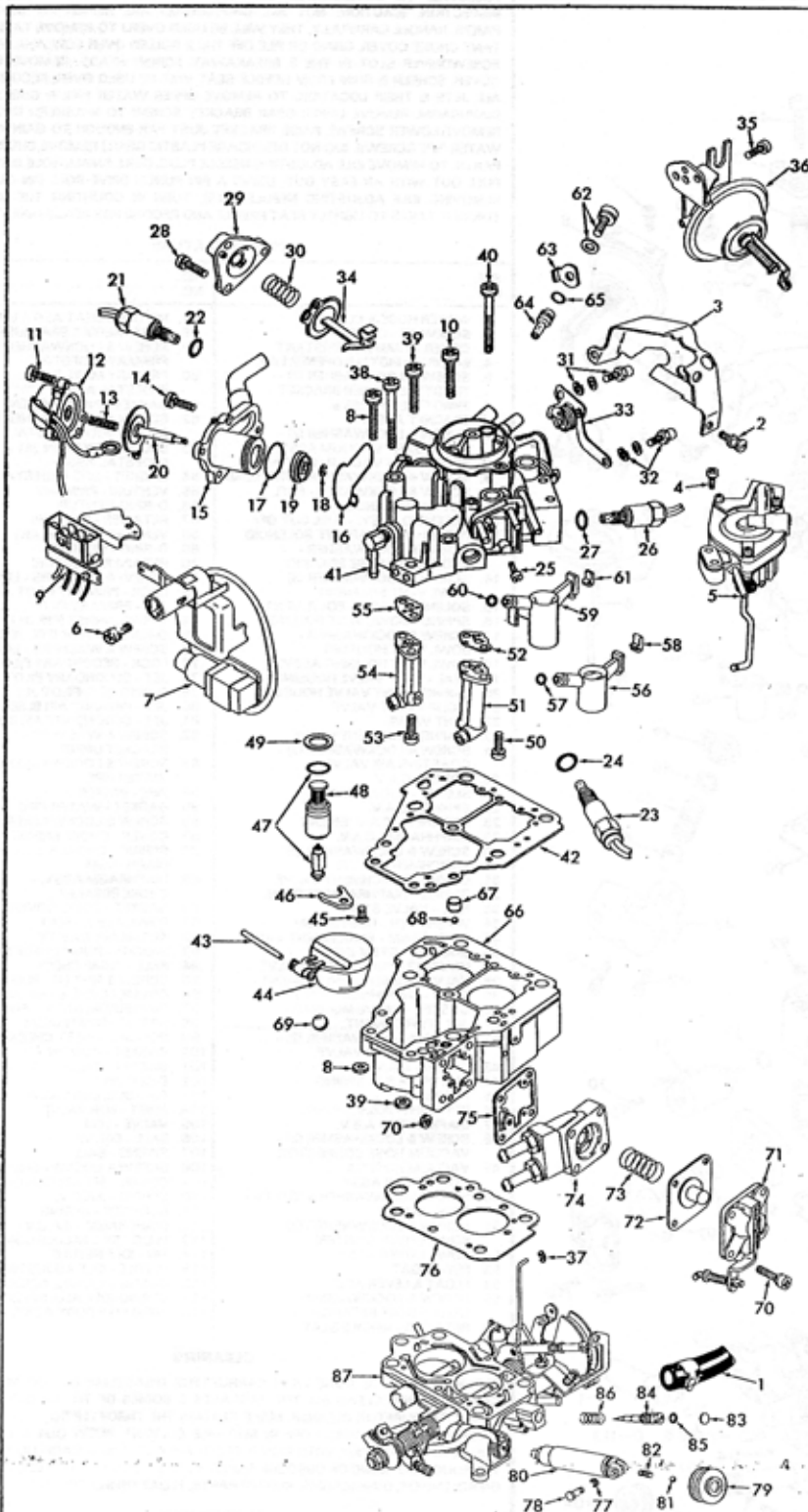
IDLE ADJUSTING NEEDLE (115) - TURN IN UNTIL LIGHTLY SEATED, THEN BACK OUT NUMBER OF TURNS RECORDED ON DISASSEMBLY. DO NOT INSTALL ROLL PIN & PLUG AT THIS TIME)

INSTRUCTION SHEET

OFF VEHICLE CARBURETOR SERVICE

MIKUNI (FEEDBACK) - MODELS 28-32, 32-35 DIDTF

GENERAL EXPLODED VIEW
THE GENERAL DESIGN AND PARTS SHOWN WILL VARY TO
INDIVIDUAL UNITS COVERED ON THIS INSTRUCTION SHEET.



DISASSEMBLY

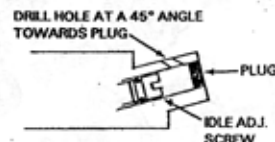
USE EXPLODED VIEW AS A GUIDE. THE NUMERICAL SEQUENCE MAY GENERALLY BE FOLLOWED TO DISASSEMBLE UNIT FAR ENOUGH TO PERMIT CLEANING AND INSPECTION. CAUTION: ALL DIAPHRAGMS ARE NOT REPAIR KIT REPLACEMENT PARTS. HANDLE CAREFULLY, THEY WILL BE USED OVER.

SPECIAL NOTES

TO REMOVE CHOKE COVER, GRIND OR FILE OFF THE 2 ROLLED OVER SCREW HEADS ON SIDE OF COVER. SAW A SCREWDRIVER SLOT IN THE 3 BREAKAWAY SCREW HEADS, REMOVE SCREWS AND COVER.

ROD & LINK ENDS OR A SNAP FIT IN PLASTIC BUSHINGS. MARK AND IDENTIFY JET MIXTURE, ENRICHMENT, AND DECELERATION SOLENOID VALVES WHEN REMOVING. (SEE SPECIAL SOLENOID SERVICE INSTRUCTIONS) AFTER REMOVING CHOKE PINION & BRACKET ASSY., REMOVE CHOKE BREAKER DIAPHRAGM ASSY., THEN TEMPORARILY INSTALL BRACKET WITH LOWER SCREW TO RETAIN LEVER AND LARGE SPRING.

SCREEN AND NEEDLE SEAT SHIM WILL BE USED OVER TO REMOVE IDLE ADJUSTING NEEDLE PLUG DRILL AS SHOWN AND KNOCK OUT WITH A PIN PUNCH. BEFORE REMOVING IDLE ADJUSTING NEEDLE, TURN IN COUNTING THE NUMBER OF TURNS IT TAKES TO LIGHTLY SEAT NEEDLE AND RECORD FOR REASSEMBLY.



NOMENCLATURE

REF. NO.	REF. NO.
1. WATER HOSE & CLAMP	40. SCREW & LOCKWASHER (2) - BOWL COVER (CENTER AIR HORN)
2. SCREW (3) - COVER	41. BOWL COVER ASSY.
3. COVER - CHOKE	42. GASKET - BOWL COVER
4. SCREW & LOCKWASHER (2) - ACTUATOR	43. PIN - FLOAT
5. DASHPOT & IDLE UP ACTUATOR	44. FLOAT & LEVER ASSY.
6. SCREW & LOCKWASHER (2) - THROTTLE SENSOR	45. SCREW & LOCKWASHER - NEEDLE SEAT RETAINER
7. THROTTLE POSITION SENSOR & BRACKET ASSY.	46. RETAINER - NEEDLE SEAT
8. SCREW, LOCKWASHER & NUT - CONNECTOR BRACKET	47. NEEDLE & SEAT ASSY.
9. CONNECTOR & BRACKET ASSY.	48. SCREEN - NEEDLE SEAT (USE OVER)
10. SCREW & LOCKWASHER - BOWL VENT GRID WIRE	49. SHIM - NEEDLE SEAT (USE OVER)
11. SCREW & LOCKWASHER (3) - BOWL VENT SOLENOID	50. SCREW & LOCKWASHER (2) - PRIMARY PEDESTAL
12. SOLENOID ASSY. - BOWL VENT	51. PRIMARY MAIN JET & PEDESTAL ASSY.
13. SPRING - BOWL VENT DIAPHRAGM	52. GASKET - PRI. PEDESTAL
14. SCREW & LOCKWASHER - BOWL VENT HOUSING	53. SCREW & LOCKWASHER (2) - SECONDARY PEDESTAL
15. BOWL VENT HOUSING ASSY.	54. SECONDARY MAIN JET & PEDESTAL ASSY.
16. SEAL - VENT VALVE HOUSING	55. GASKET - SEC. PEDESTAL
17. O-RING - VENT VALVE HOUSING	56. VENTURI - PRIMARY
18. E-CLIP - VENT VALVE	57. O-RING - PRI. VENTURI
19. VENT VALVE	58. RETAINER - VENTURI
20. DIAPHRAGM - VENT VALVE	59. VENTURI - SECONDARY
21. SOLENOID ASSY. - JET MIXTURE	60. O-RING - SEC. VENTURI
22. O-RING - JET MIXTURE SOLENOID	61. RETAINER - VENTURI
23. SOLENOID ASSY. - ENRICHMENT	62. SCREW & WASHERS - LOCK
24. O-RING - ENRICHMENT SOLENOID	63. LOCK - SECONDARY PILOT JET
25. SCREW & LOCKWASHER - BRACKET (LOOM)	64. JET - SECONDARY PILOT
26. SOLENOID ASSY. - DECELERATION VALVE	65. O-RING - SEC. PILOT JET
27. O-RING - DECELERATION SOLENOID	66. BOWL ASSY. - FUEL
28. SCREW & LOCKWASHER (3) - COVER	67. WEIGHT - PUMP CHECK BALL
29. COVER - CHOKE BREAKER	68. BALL - PUMP CHECK
30. SPRING - CHOKE BREAKER DIAPHRAGM	69. BALL - ANTI OVERFILL DEVICE
31. SCREW & WASHERS - BRACKET (UPPER)	70. SCREW, LOCKWASHER & NUT (4) - PUMP COVER
32. SCREW & WASHERS - BRACKET (LOWER)	71. COVER, LEVER & LINK ASSY. - PUMP
33. CHOKE PINION & BRACKET ASSY.	72. DIAPHRAGM ASSY. - PUMP
34. DIAPHRAGM ASSY. - CHOKE BREAKER	73. SPRING - PUMP DIAPHRAGM
35. SCREW & LOCKWASHER - BRACKET	74. HOUSING - PUMP
36. SECONDARY VACUUM & BRACKET ASSY.	75. GASKET - PUMP HOUSING
37. E-CLIP - CHOKE ROD (UPPER)	76. GASKET - THROTTLE BODY
38. SCREW, LOCKWASHER & NUT - BOWL COVER	77. E-CLIP - PIN
39. SCREW, LOCKWASHER & NUT - BOWL COVER	78. PIN - SUB EGR VALVE
	79. BOOT - EGR VALVE
	80. VALVE - EGR
	81. BALL - EGR VALVE
	82. SPRING - EGR VALVE BALL
	83. PLUG - IDLE NEEDLE CONCEALMENT
	84. NEEDLE - IDLE ADJUSTING
	85. O-RING - IDLE ADJ. NEEDLE
	86. SPRING - IDLE ADJ. NEEDLE
	87. THROTTLE BODY ASSY.

CLEANING

CLEANING MUST BE DONE WITH CARBURETOR DISASSEMBLED. (DO NOT SOAK IN CARB. CLEANER) CLEAN ALL THE PASSAGES & BODIES OF THE CARBURETOR WITH SPRAY CARBURETOR CLEANER. MAKE CERTAIN THE THROTTLE BODY IS FREE OF ALL CARBON DEPOSITS. WASH OFF IN SUITABLE SOLVENT. BLOW OUT ALL PASSAGES AND JETS IN CASTINGS WITH COMPRESSED AIR AND CHECK CAREFULLY TO INSURE THOROUGH CLEANING OF OBSCURE AREAS. CAUTION: DO NOT USE CLEANING FLUIDS ON SOLENOIDS, DIAPHRAGMS, RUBBER PARTS, FLOAT OR SWITCHES.

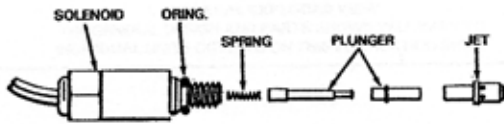
REASSEMBLY

REASSEMBLE IN REVERSE ORDER OF DISASSEMBLY. NOTE SPECIAL INSTRUCTIONS AND ADJUSTMENTS.

SPECIAL INSTRUCTIONS

IDLE ADJUSTING NEEDLE (84) - TURN IN UNTIL LIGHTLY SEATED. THEN BACK OUT NUMBER OF TURNS RECORDED ON DISASSEMBLY.

ADJUSTMENTS



JET PARTS CAN BE REMOVED FROM SOLENOID (PRESS FIT) AND CLEAN WITH A SPRAY CLEANER, BEING VERY CAREFUL OF SPRING VERY FRAGILE

SOLENOID CLEANING

PAGE 1

SMALL SPRING GUIDE

REF. NO. 16	3/16" x 1"
REF. NO. 27	1/2" x 13/16" HEAVY WIRE
REF. NO. 32	11/32" x 11/16"
REF. NO. 45	1/2" x 1 11/32" HEAVY WIRE
REF. NO. 88	11/32" x 3/4"
REF. NO. 98	7/16" x 1/2"
REF. NO. 110	1/2" x 25/32"
REF. NO. 117	3/16" x 1/2"

PAGE 2

SMALL SPRING GUIDE

REF. NO. 13	7/32" x 1"
REF. NO. 30	11/32" x 3/4"
REF. NO. 72	7/16" x 1/2"
REF. NO. 85	3/16" x 3/8"

- ② MEASURE DISTANCE FROM BOTTOM OF FLOAT TO GASKET SURFACE OF BOWL COVER



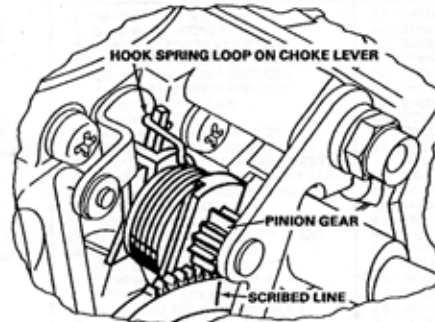
19.8 - 20.0MM
+ 1.0MM

- ① AIR HORN INVERTED. (WITHOUT GASKET)

- ③ IF READING IS NOT WITHIN RANGE, ADJUSTMENT IS MADE BY CHANGING SHIM UNDER NEEDLE SEAT.

DRY FLOAT LEVEL SETTING

FIG. 1



ALIGN THE SCRIBED LINE OR BLACK PAINTED LINE ON TOOTH OF THE CHOKE PINION GEAR, WITH THE SCRIBED LINE ON THE CAM LEVER.

CHOKE PINION & CAM LEVER GEAR TIMING

FIG. 2

ALIGN MARKS ON END OF BRACKET & HOUSING, TIGHTEN LOCK SCREWS.

