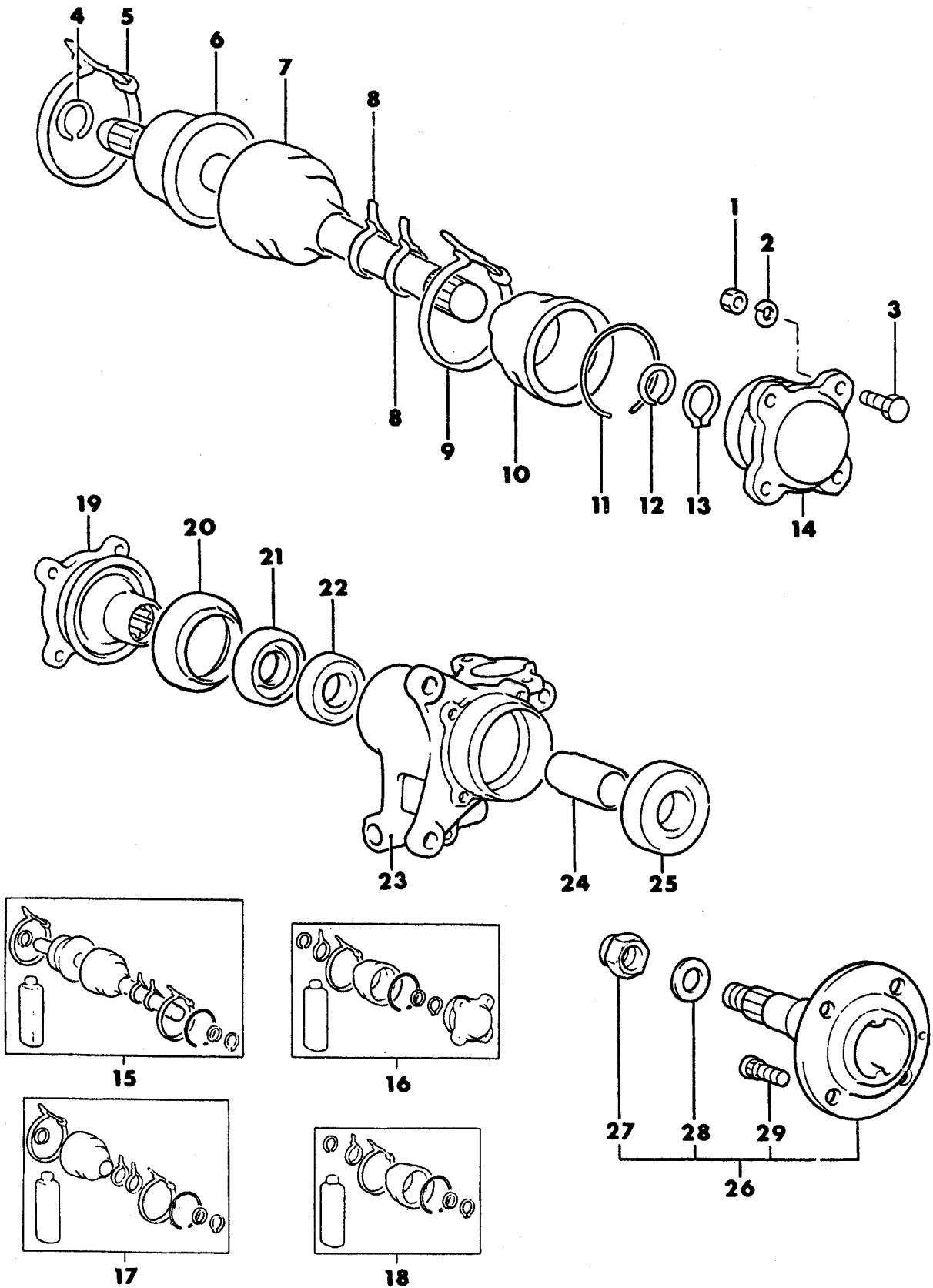


AXLE, REAR HOUSING AND SHAFT
24 RWD - CONQUEST

7703 100



1987-88 IMPORT PARTS CATALOG

Figure 3-100
Illus. Page 3-3

REAR AXLE

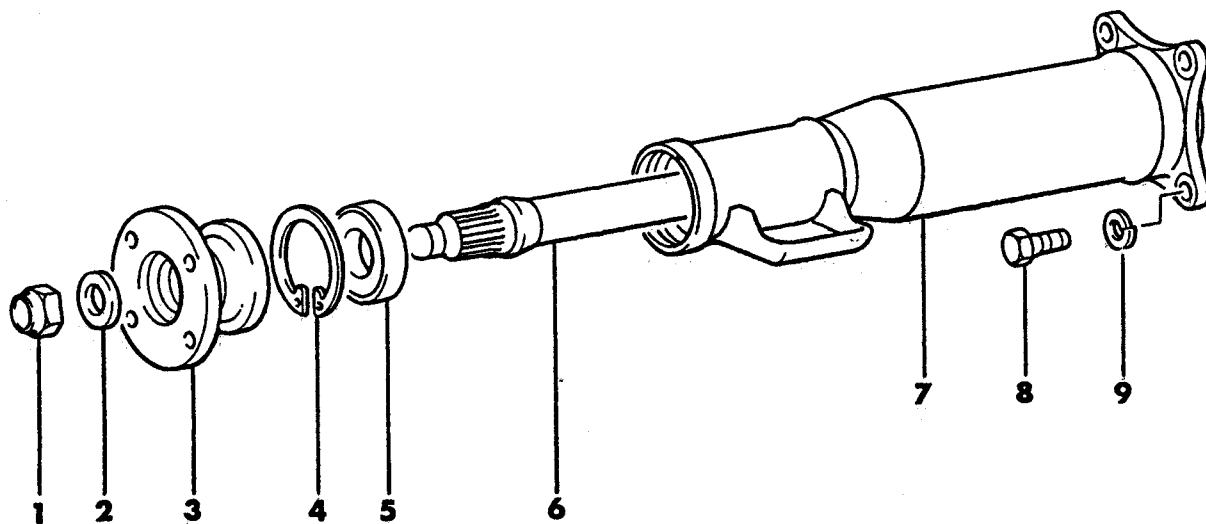
ITEM	PART NUMBER	QTY	BODY	MODEL	DESCRIPTION
AXLE, REAR HOUSING AND SHAFT 24 RWD - CONQUEST					
1	MU43 0002	8			NUT (10)
2	MF45 0406	8			WASHER, Spring (10)
3					BOLT (10X28)
	MB16 0312	8			Up To Aug. 1, 1986
	MB16 0664	8			After Aug. 1, 1986
4					CIRCLIP
	MB16 0387	2			(1987)
	MB52 6189	2			(1988)
5					BAND, Boot (B.J.) (Service In Package)
6					JOINT and DRIVE SHAFT, Birfield (Service In Package)
7					BOOT, Birfield Joint (Service In Package)
8					BAND, (C) Boot (Service In Package)
9					BAND, Boot (DOJ) (Service In Package)
10					BOOT, Double Offset Joint (Service In Package)
11					CLIP (Service In Package)
12					CLIP (Service In Package)
13					SNAP RING (Service In Package)
14					JOINT, Double Offset (Service In Package)
15					DRIVE SHAFT PACKAGE
	MB16 0994	2			w/o Intercooler (1987)
	MB16 0976	2			w/Intercooler (1987)
	MB52 6650	2			w/Intercooler (1988)
16					JOINT PACKAGE, Double Offset
	MB16 0996	2			w/o Intercooler (1987)
	MB16 0978	2			w/Intercooler (1987)
	MB52 6653	2			w/Intercooler (1988)
17					BOOT PACKAGE, Birfield Joint
	MB16 0995	2			w/o Intercooler (1987)
	MB16 0977	2			w/Intercooler (1987)
	MB52 6651	2			w/Intercooler (1988)
18					BOOT PACKAGE, Double Offset Joint
	MB16 0997	2			w/o Intercooler (1987)
	MB16 0979	2			w/Intercooler (1987)
	MB52 6652	2			w/Intercooler (1988)
19					FLANGE, Companion
	MB16 0983	2			w/o Intercooler (1987)
	MB39 3029	2			w/Intercooler (1987)
	MB39 3985	2			w/Intercooler (1988)
20	MB16 0318	2			COVER, Dust Housing
21	MB09 2186	2			OIL SEAL
22	MB09 2185	2			BEARING
23					HOUSING
	MB11 0905	1			Left
	MB11 0906	1			Right
24	MB09 2181	2			SPACER, Rear Axle
25	MB09 2177	2			BEARING
26					SHAFT ASSEMBLY, Axle
	MB16 0993	2			w/o Intercooler (1987)
	MB56 9017	2			w/Intercooler (1987)
	MB56 9061	2			w/Intercooler (1988)
27	MB09 2179	1			NUT, Lock

ENGINE:	Q=1500 cc	A=2000 cc	TRANS:	A=Automatic	4=4-Speed Manual
Blank=All	K=1600 cc (w/o Balance Shaft)	F=2600 cc (Car)	Blank=All	M=All Manual	5=5-Speed Manual
	W=2600 cc (Truck)				8=4 x 2 Manual
SERIES:	H=High	MODELS:	24 FWD=2-Dr Hatchback (Colt)	27 RWD-4WD=Pickup (Ram 50, Power Ram 50)	
L=Low	P=Premium		24 RWD=2-Dr Hatchback (Conquest)	27 4WD=Sport Utility (Raider)	45 FWD=4-Dr Station Wagon (Colt)
M=Medium	S=Special		41 FWD=4-Dr Sedan (Colt & Eagle Vista)		45 FWD-4WD=Station Wagon (Vista)
AR=Use as Required # =New Part Number — =Non Illustrated Part Printed in U.S.A. FEBRUARY, 1989					

Figure 3-100
Illus. Page 3-4

REAR AXLE

ENGINE:	Q=1500 cc	A=2000 cc	TRANS:	A=Automatic	4=4-Speed Manual
Blank=All	K=1600 cc (w/o Balance Shaft)	F=2600 cc (Car)	Blank=All	M=All Manual	5=5-Speed Manual
	W=2600 cc (Truck)				8=4 x 2 Manual
SERIES:	H=High	MODELS:	24 FWD=2-Dr Hatchback (Colt)	27 RWD=4WD=Pickup (Ram 50, Power Ram 50)	
L=Low	P=Premium		24 FWD=2-Dr Hatchback (Conquest)	27 4WD=Sport Utility (Raider)	45 FWD=4-Dr Station Wagon (Colt)
M=Medium	S=Special		41 RWD=4-Dr Sedan (Colt & Eagle Vista)		45 FWD=4WD=Station Wagon (Vista)
AR=Use as Required	# =New Part Number	- =Non Illustrated Part		Printed in U.S.A.	FEBRUARY, 1989

7703 200TORQUE TUBE
24 RWD - CONQUEST

1987-88 IMPORT PARTS CATALOG

Figure 3-200
Illus. Page 3-7

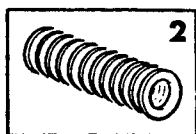
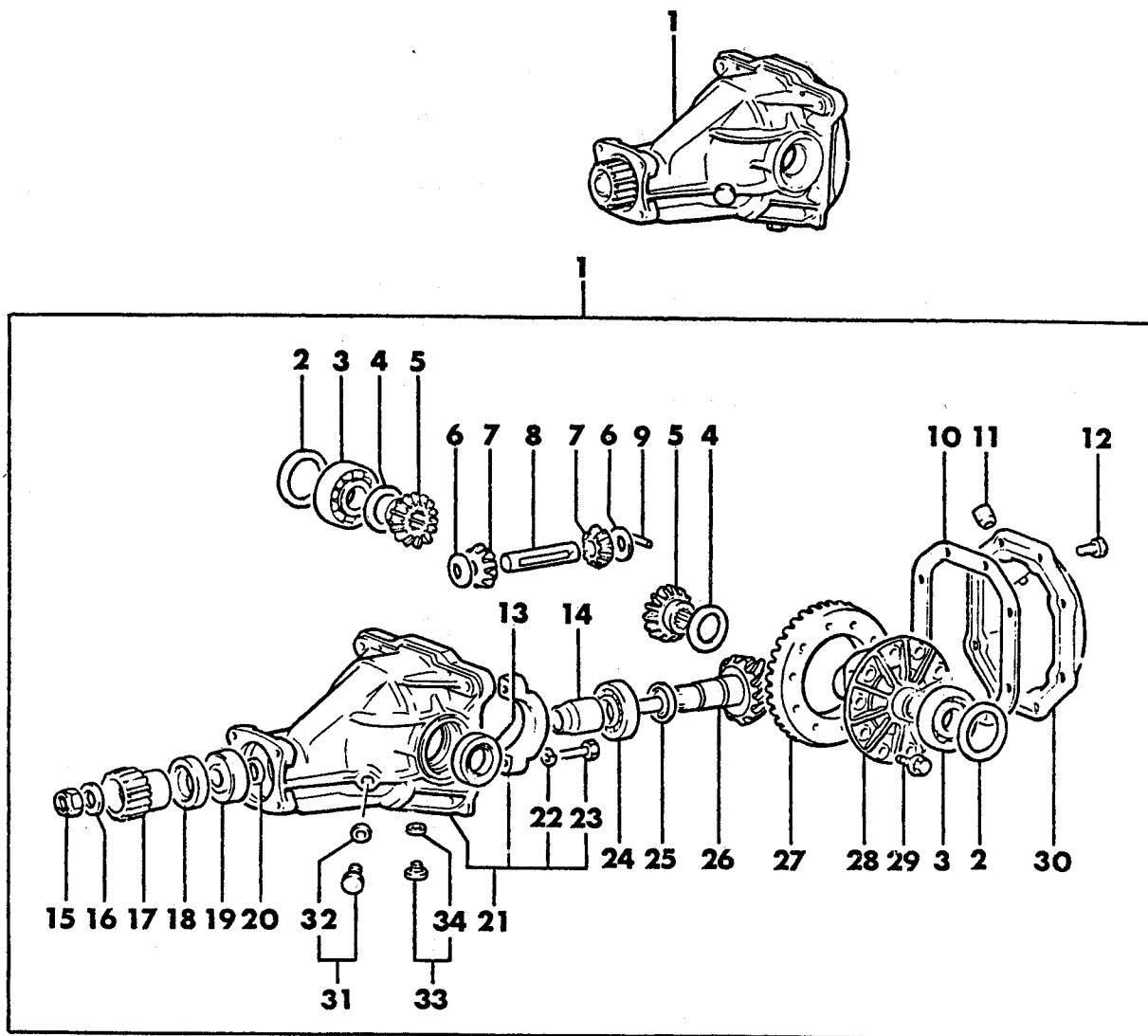
REAR AXLE

ITEM	PART NUMBER	QTY	BODY	MODEL	DESCRIPTION
TORQUE TUBE 24 RWD - CONQUEST					
1	MA14 3517	1			NUT, Lock
2	MT20 3641	1			WASHER, Diff. Yoke End
3					FLANGE, Companion
	MB16 0902	1			w/o Intercooler (1987)
	MB29 0595	1			w/Intercooler
4	MF52 2236	1			SNAP RING (62)
5	MB00 0968	1			BEARING
6					SHAFT ASSEMBLY, Extension
	MB16 0582	1			w/o Intercooler (1987)
	MB29 0748	1			w/Intercooler
7					TUBE, Torque
	MB16 0900	1			w/o Intercooler (1987)
	MB29 0746	1			w/Intercooler
8	MB16 0985	4			BOLT
9	MS45 0044	4			WASHER, Spring (12)

ENGINE: Blank=All	Q=1500 cc	A=2000 cc	TRANS: Blank=All	A=Automatic	4=4-Speed Manual
	K=1600 cc (w/o Balance Shaft)	F=2600 cc (Car)		M=All Manual	5=5-Speed Manual
	W=2600 cc (Truck)				8=4 x 2 Manual
SERIES: L=Low M=Medium	H=High P=Premium S=Special	MODELS: 24 FWD=2-Dr Hatchback (Colt) 27 RWD-4WD=Pickup (Ram 50, Power Ram 50)			
		24 RWD=2-Dr Hatchback (Conquest) 27 4WD=Sport Utility (Raider) 45 FWD=4-Dr Station Wagon (Colt)			
		41 FWD=4-Dr Sedan (Colt & Eagle Vista) 45 FWD-4WD=Station Wagon (Vista)			
AR=Use as Required		# =New Part Number	— =Non Illustrated Part		Printed in U.S.A. FEBRUARY, 1989

7703 500

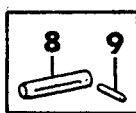
DIFFERENTIAL, W/O INTERCOOLER
 24 RWD - CONQUEST
 1987



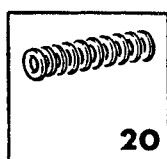
35



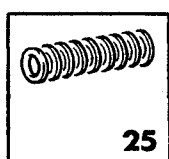
36



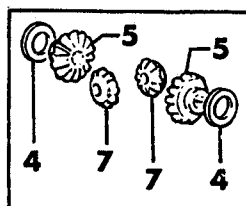
37



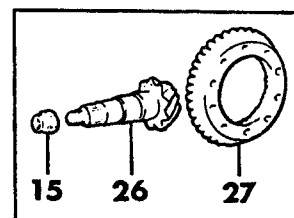
38



39



40



41

1987-88 IMPORT PARTS CATALOG

Figure 3-500
Illus. Page 3-15

REAR AXLE

ITEM	PART NUMBER	QTY	BODY	MODEL	DESCRIPTION
DIFFERENTIAL, W/O INTERCOOLER					
24 RWD - CONQUEST					
1987					
1	MB24 1975	1			DIFFERENTIAL and CARRIER
2					SPACER, Side Bearing (Serviced In Item #35)
					SPACER, Side Bearing (T=2.50)
					SPACER, Side Bearing (T=2.55)
					SPACER, Side Bearing (T=2.60)
					SPACER, Side Bearing (T=2.65)
					SPACER, Side Bearing (T=2.70)
					SPACER, Side Bearing (T=2.75)
					SPACER, Side Bearing (T=2.80)
					SPACER, Side Bearing (T=2.85)
					SPACER, Side Bearing (T=2.90)
					SPACER, Side Bearing (T=2.95)
					SPACER, Side Bearing (T=3.00)
					SPACER, Side Bearing (T=3.05)
					SPACER, Side Bearing (T=3.10)
					SPACER, Side Bearing (T=3.15)
					SPACER, Side Bearing (T=3.25)
					SPACER, Side Bearing (T=3.20)
					SPACER, Side Bearing (T=3.30)
					SPACER, Side Bearing (T=3.35)
					SPACER, Side Bearing (T=3.40)
					SPACER, Side Bearing (T=3.45)
					SPACER, Side Bearing (T=3.50)
					SPACER, Side Bearing (T=3.55)
					SPACER, Side Bearing (T=3.60)
					SPACER, Side Bearing (T=3.65)
					SPACER, Side Bearing (T=3.70)
3	MB09 2348	2			BEARING, Differential Side
4					SPACER, Side Gear (Serviced in Item #36)
					SPACER, Side Gear (T=0.80)
					SPACER, Side Gear (T=0.85)
					SPACER, Side Gear (T=0.95)
					SPACER, Side Gear (T=1.05)
					SPACER, Side Gear (T=1.15)
					SPACER, Side Gear (T=1.25)
					SPACER, Side Gear (T=0.90)
					SPACER, Side Gear (T=1.00)
					SPACER, Side Gear (T=1.10)
					SPACER, Side Gear (T=1.20)
					SPACER, Side Gear (T=1.30)
5					GEAR, Differential Side (Serviced in Item #40)
6	MB29 0268	2			WASHER
7					PINION, Differential (Serviced in Item #40)
8					SHAFT, Pinion (Serviced In Item #37)
9	MT20 2137	1			PIN, Lock
10	MB16 0579	1			GASKET
11	MB16 0364	1			PLUG, Vent
12	MF14 0221	8			BOLT and WASHER, Assembled (8x14)
13	MB00 1170	2			OIL SEAL
	MB39 3929	2			After 11-1-87
14					SPACER, Pinion Bearing

ENGINE:	Q=1500 cc	A=2000 cc	TRANS:	A=Automatic	4=4-Speed Manual
Blank=All	K=1600 cc (w/o Balance Shaft)	F=2600 cc (Car)	Blank=All	M=All Manual	5=5-Speed Manual
	W=2600 cc (Truck)				8=4 x 2 Manual
SERIES:	H=High	MODELS:	24 FWD=2-Dr Hatchback (Colt)		
L=Low	P=Premium		27 RWD=4WD=Pickup (Ram 50, Power Ram 50)		
M=Medium	S=Special		24 RWD=2-Dr Hatchback (Conquest)		
			27 4WD=Sport Utility (Raider)		
			41 FWD=4-Dr Sedan (Colt & Eagle Vista)		
			45 FWD=4-Dr Station Wagon (Colt)		
			45 FWD=4WD=Station Wagon (Vista)		
AR=Use as Required		# =New Part Number	-- =Non Illustrated Part		Printed in U.S.A.
					FEBRUARY, 1989

1987-88 IMPORT PARTS CATALOG

Figure 3-500
 Illus. Page 3-16

REAR AXLE

ITEM	PART NUMBER	QTY	BODY	MODEL	DESCRIPTION
DIFFERENTIAL, W/O INTERCOOLER					
24 RWD - CONQUEST					
1987					
	MB09 2143	1			L = 46.67
	MB09 2144	1			L = 47.01
15	MA14 3517	1			NUT, Lock
16	MT20 3641	1			WASHER
17	MB16 0319	1			COUPLING, Spline
18	MB16 0578	1			OIL SEAL
19	MB29 0962	1			BEARING, Drive Pinion Front
20					SHIM, Diff. Front Bearing (Serviced in Item #38)
					SHIM, Diff. Front Brg. (T=0.30)
					SHIM, Diff. Front Brg. (T=2.00)
					SHIM, Diff. Front Brg. (T=2.03)
					SHIM, Diff. Front Brg. (T=2.06)
					SHIM, Diff. Front Brg. (T=2.09)
					SHIM, Diff. Front Brg. (T=2.12)
					SHIM, Diff. Front Brg. (T=2.15)
					SHIM, Diff. Front Brg. (T=2.18)
					SHIM, Diff. Front Brg. (T=2.21)
					SHIM, Diff. Front Brg. (T=2.24)
					SHIM, Diff. Front Brg. (T=2.27)
					SHIM, Diff. Front Brg. (T=2.30)
					SHIM, Diff. Front Brg. (T=2.33)
21	MB16 0365	1			CARRIER ASSEMBLY, Diff.
22	MF45 0407	4			WASHER, Spring (12)
23	MB09 2060	4			BOLT, Cap
24	MB39 3470	1			BEARING, Drive Pinion Rear
25					SHIM, Diff. Rear Bearing (Serviced in Item #39)
					SHIM, Diff. Rear Brg. (T=1.38)
					SHIM, Diff. Rear Brg. (T=0.30)
					SHIM, Diff. Rear Brg. (T=1.41)
					SHIM, Diff. Rear Brg. (T=1.44)
					SHIM, Diff. Rear Brg. (T=1.47)
					SHIM, Diff. Rear Brg. (T=1.50)
					SHIM, Diff. Rear Brg. (T=1.53)
					SHIM, Diff. Rear Brg. (T=1.56)
					SHIM, Diff. Rear Brg. (T=1.59)
					SHIM, Diff. Rear Brg. (T=1.62)
					SHIM, Diff. Rear Brg. (T=1.65)
26					PINION, Drive (Serviced in Item #41)
27					GEAR, Drive (Serviced in Item #41)
28	MB29 0626	1			CASE, Diff.
29	MB09 2221	10			BOLT (10 X 23.5)
30	MB16 0370	1			COVER
31	MB00 1261	1			PLUG ASSEMBLY, Filler
32	MF66 0066	1			GASKET (16)
33	MB00 1293	1			PLUG ASSEMBLY, Magnet
34	MB00 1294	1			PACKING
35	MB18 5375	1			SPACER SET, Side Brg.
36	MB18 5519	1			SPACER SET, Diff. Gear
37	MB24 1909	1			SHAFT PACKAGE, Pinion
38	MB18 5361	1			SHIM SET, Drive Pinion, Frt.
39	MB18 5351	1			SHIM SET, Drive Pinion, Rear

ENGINE:	Q=1500 cc	A=2000 cc	TRANS:	A=Automatic	4=4-Speed Manual
Blank=All	K=1600 cc (w/o Balance Shaft)	F=2600 cc (Car)	Blank=All	M=All Manual	5=5-Speed Manual
	W=2600 cc (Truck)				8=4 x 2 Manual

SERIES:	H=High	MODELS:	24 FWD=2-Dr Hatchback (Colt)	27 RWD-4WD=Pickup (Ram 50, Power Ram 50)
L=Low	P=Premium		24 RWD=2-Dr Hatchback (Conquest)	27 4WD=Sport Utility (Raider)
M=Medium	S=Special		41 FWD=4-Dr Sedan (Colt & Eagle Vista)	45 FWD=4-Dr Station Wagon (Colt)
				45 FWD-4WD=Station Wagon (Vista)

AR=Use as Required

#=New Part Number

--=Non Illustrated Part

Printed in U.S.A.

FEBRUARY, 1989

1987-88 IMPORT PARTS CATALOG

Figure 3-500
Illus. Page 3-17

REAR AXLE

ITEM	PART NUMBER	QTY	BODY	MODEL	DESCRIPTION
------	-------------	-----	------	-------	-------------

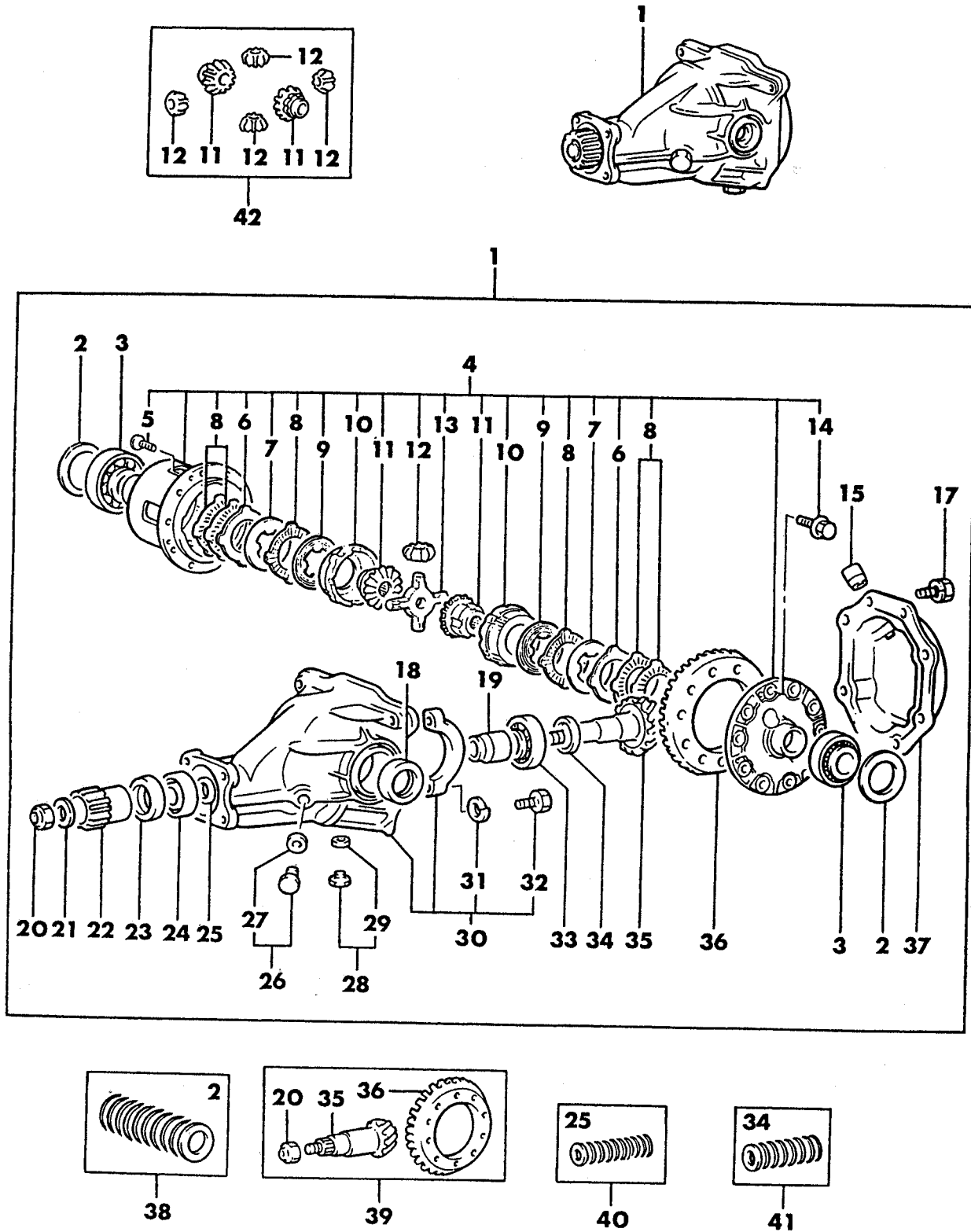
DIFFERENTIAL, W/O INTERCOOLER
24 RWD - CONQUEST
1987

40	MB24 1970	1			GEAR SET, Diff.
41	MB24 1979	1			GEAR SET, Final Drive

ENGINE:		Q=1500 cc	A=2000 cc	TRANS:	A=Automatic	4=4-Speed Manual
Blank=All		K=1600 cc (w/o Balance Shaft)	F=2600 cc (Car)	Blank=All	M=All Manual	5=5-Speed Manual
		W=2600 cc (Truck)				8=4 x 2 Manual
SERIES:	H=High	MODELS: 24 FWD=2-Dr Hatchback (Colt)		27 RWD-4WD=Pickup (Ram 50, Power Ram 50)		
L=Low	P=Premium	24 RWD=2-Dr Hatchback (Conquest)		27 4WD=Sport Utility (Raider)	45 FWD=4-Dr Station Wagon (Colt)	
M=Medium	S=Special	41 FWD=4-Dr Sedan (Colt & Eagle Vista)			45 FWD-4WD=Station Wagon (Vista)	
AR=Use as Required		#=New Part Number	--=Non Illustrated Part		Printed in U.S.A.	FEBRUARY, 1989

7703 700 A

DIFFERENTIAL, LIMITED SLIP
W/INTERCOOLER
24 RWD - CONQUEST



1987-88 IMPORT PARTS CATALOG

Figure 3-700
Illus. Page 3-19

REAR AXLE

ITEM	PART NUMBER	QTY	BODY	MODEL	DESCRIPTION
DIFFERENTIAL, LIMITED SLIP W/INTERCOOLER 24 RWD - CONQUEST					
1					DIFFERENTIAL and CARRIER
	MB37 7354	1			(1987)
	MB52 7797	1			(1988) (Up to July 1, 1987)
	MB59 7844	1			(1988) (After July 1, 1987)
2					SPACER, Side Bearing (Serviced in Item #38)
					T=2.50
					T=2.55
					T=2.60
					T=2.65
					T=2.70
					T=2.75
					T=2.80
					T=2.85
					T=2.90
					T=2.95
					T=3.00
					T=3.05
					T=3.10
					T=3.15
					T=3.20
					T=3.25
					T=3.30
					T=3.35
					T=3.40
					T=3.45
3	MB09 2348	2			BEARING, Differential Side
4					DIFFERENTIAL PACKAGE, Limited Slip
	MB29 0964	1			(1987)
	MB56 9062	1			(1988)
5	MB16 0925	4			SCREW (6X12)
6	MB16 0923	2			PLATE, Spring
7	MB16 0924	2			DISC, Spring
8	MB16 0921	6			PLATE
9	MB16 0922	2			DISC
10	MB16 0917	2			RING, Pressure
11					GEAR, Side (Serviced in Item #42)
12					PINION (Serviced in Item #42)
13	MB39 3116	1			SHAFT, Diff. Pinion
14	MB09 2221	10			BOLT (10 X 23.5)
15	MB16 0364	1			PLUG, Vent
17	MF14 0221	8			BOLT and WASHER (8 X 14)
18	MB00 1170	2			OIL SEAL
	MB39 3929	2			After 11-1-87
19	MB09 2346	1			SPACER, Pinion Bearing (L=56.67)
	MB09 2347	1			(L=57.01)
20	MB09 2179	1			NUT, Lock
21	MB09 2180	1			WASHER
22	MB29 0925	1			COUPLING, Spline
23	MB16 0949	1			OIL SEAL
24	MB29 0961	1			BEARING, Drive Pinion, Front
25					SHIM, Diff. Front Bearing (Serviced in Item #40)

ENGINE:	Q=1500 cc	A=2000 cc	TRANS:	A=Automatic	4=4-Speed Manual
	Blank=All	F=2600 cc (Car)		M=All Manual	5=5-Speed Manual
	W=2600 cc (Truck)				8=4 x 2 Manual
SERIES:	H=High	MODELS: 24 FWD=2-Dr Hatchback (Colt)		27 RWD-4WD=Pickup (Ram 50, Power Ram 50)	
	L=Low	24 RWD=2-Dr Hatchback (Conquest)		27 4WD=Sport Utility (Raider)	
M=Medium	S=Special	41 FWD=4-Dr Sedan (Colt & Eagle Vista)		45 FWD=4-Dr Station Wagon (Colt)	
				45 FWD-4WD=Station Wagon (Vista)	
AR=Use as Required		# =New Part Number	--=Non Illustrated Part		Printed in U.S.A.
				FEBRUARY, 1989	

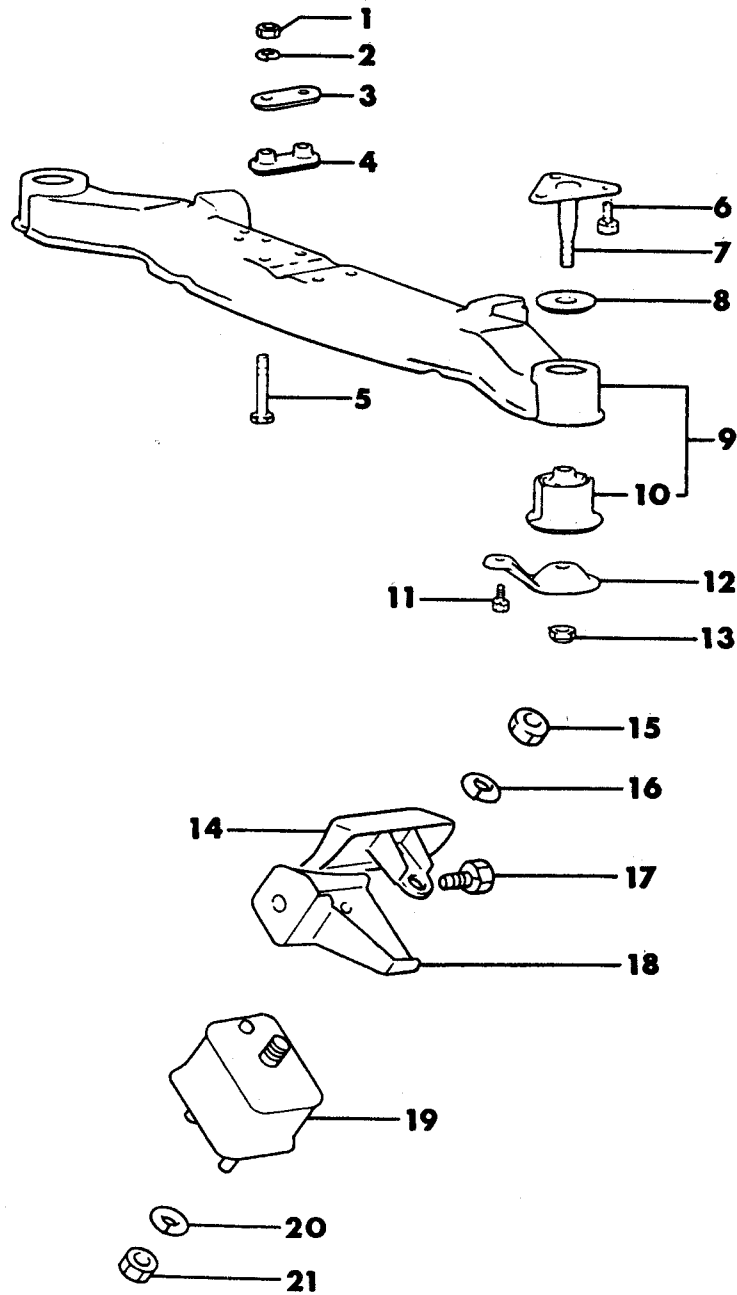
1987-88 IMPORT PARTS CATALOG

Figure 3-700
Illus. Page 3-20

REAR AXLE

ITEM	PART NUMBER	QTY	BODY	MODEL	DESCRIPTION
DIFFERENTIAL, LIMITED SLIP W/INTERCOOLER 24 RWD - CONQUEST					
					T=2.00
					T=2.03
					T=2.06
					T=2.09
					T=2.12
					T=2.15
					T=2.18
					T=2.21
					T=2.24
					T=2.27
					T=2.30
					T=2.33
26	MB00 1261	1			PLUG, Filler
27	MF66 0066	1			GASKET (16)
28	MB00 1293	1			PLUG, Magnet
29	MB00 1294	1			PACKING
30	MB29 0945	1			CARRIER ASSEMBLY
31	MF45 0407	4			WASHER, Spring (12)
32	MB09 2060	4			BOLT, Cap
33	MB39 3470	1			BEARING, Drive Pinion, Rear
34					SHIM, Diff. Rear Bearing (Serviced in Item #41)
					T=1.38
					T=1.41
					T=1.44
					T=1.47
					T=1.50
					T=1.53
					T=1.56
					T=1.59
					T=1.62
					T=1.65
35					PINION, Drive (Serviced in Item #39)
36					GEAR, Drive (Serviced in Item #39)
37	MB29 0926	1			COVER
	MB29 0928	1			GASKET (1987)
38	MB18 5375	2			SPACER SET, Side Bearing
39					GEAR SET, Final Drive
	MB28 3430	1			(Up to July 1, 1987)
	MB59 7845	1			(After July 1, 1987)
40	MB18 5361	1			SHIM SET, Drive Pinion, Front
41	MB18 5351	1			SHIM SET, Drive Pinion, Rear
42					GEAR SET, Differential
	MB28 3479	1			(1987)
	MB59 7565	1			(1988)

ENGINE:		Q=1500 cc	A=2000 cc	TRANS:	A=Automatic	4=4-Speed Manual
Blank=All		K=1600 cc (w/o Balance Shaft)	F=2600 cc (Car)	Blank=All	M=All Manual	5=5-Speed Manual
		W=2600 cc (Truck)				8=4 x 2 Manual
SERIES:	H=High	MODELS: 24 FWD=2-Dr Hatchback (Colt)		27 RWD=4WD=Pickup (Ram 50, Power Ram 50)		
L=Low	P=Premium	24 RWD=2-Dr Hatchback (Conquest)		27 4WD=Sport Utility (Raider)	45 FWD=4-Dr Station Wagon (Colt)	
M=Medium	S=Special	41 FWD=4-Dr Sedan (Colt & Eagle Vista)			45 FWD=4WD=Station Wagon (Vista)	
AR=Use as Required		#=New Part Number	--=Non Illustrated Part		Printed in U.S.A.	FEBRUARY, 1989

DIFFERENTIAL MOUNTS
24 RWD - CONQUEST**7703 1200**

1987-88 IMPORT PARTS CATALOG

Figure 3-1200
Illus. Page 3-47

REAR AXLE

ITEM	PART NUMBER	QTY	BODY	MODEL	DESCRIPTION
------	-------------	-----	------	-------	-------------

DIFFERENTIAL MOUNTS 24 RWD - CONQUEST

1	MU43 0002	4			NUT (10)
2	MS45 0043	4			WASHER, Spring (10)
3	MB24 2150	2			CUSHION, Upper
4	MB24 2151	2			CUSHION, Lower
5	MB24 2153	4			BOLT, Large Head (10x95)
6	MF24 1307	6			BOLT, Washer Assy. (12x25)
7	MB11 0883	2			PIN, Front Support
8	MB11 1442	2			STOPPER, Upper
9	MB11 1250	1			SUPPORT, Complete, Front
10	MB11 1252	2			BUSHING, (D)
11	MF24 1280	2			BOLT, Washer Assy. (10x20)
12	MB11 0887	2			STOPPER, Lower
13	MB24 2260	2			NUT, Flange, Self Locking (12)
14	MB24 2212	2			PROTECTOR, Rear Support
15	MF43 0123	2			NUT (12)
16	MF45 0407	4			WASHER, Spring (12)
17	MF10 6110	2			BOLT (12x25) (1987)
	MU10 1011	2			(1988)
18					SUPPORT, Rear LH
	MB24 2155	1			w/o Intercooler (1987)
	MB33 8760	1			w/Intercooler
					SUPPORT, Rear RH
	MB24 2156	1			w/o Intercooler (1987)
	MB33 8761	1			w/Intercooler
19	MB00 3170	2			INSULATOR, Diff. Support, Rear
20	MF45 0406	4			WASHER, Spring (10)
21	MU43 0002	4			NUT (10)

ENGINE:	Q=1500 cc	A=2000 cc	TRANS:	A=Automatic	4=4-Speed Manual
Blank=All	K=1600 cc (w/o Balance Shaft)	F=2600 cc (Car)	Blank=All	M=All Manual	5=5-Speed Manual
	W=2600 cc (Truck)				8=4 x 2 Manual
SERIES:	H=High	MODELS:	24 FWD=2-Dr Hatchback (Colt)		
L=Low	P=Premium		27 RWD-4WD=Pickup (Ram 50, Power Ram 50)		
M=Medium	S=Special		24 RWD=2-Dr Hatchback (Conquest)		
			27 4WD=Sport Utility (Raider)		
			41 FWD=4-Dr Sedan (Colt & Eagle Vista)		
			45 FWD=4-Dr Station Wagon (Colt)		
			45 FWD-4WD=Station Wagon (Vista)		
AR=Use as Required		# =New Part Number	--=Non Illustrated Part		Printed in U.S.A.
					FEBRUARY, 1989