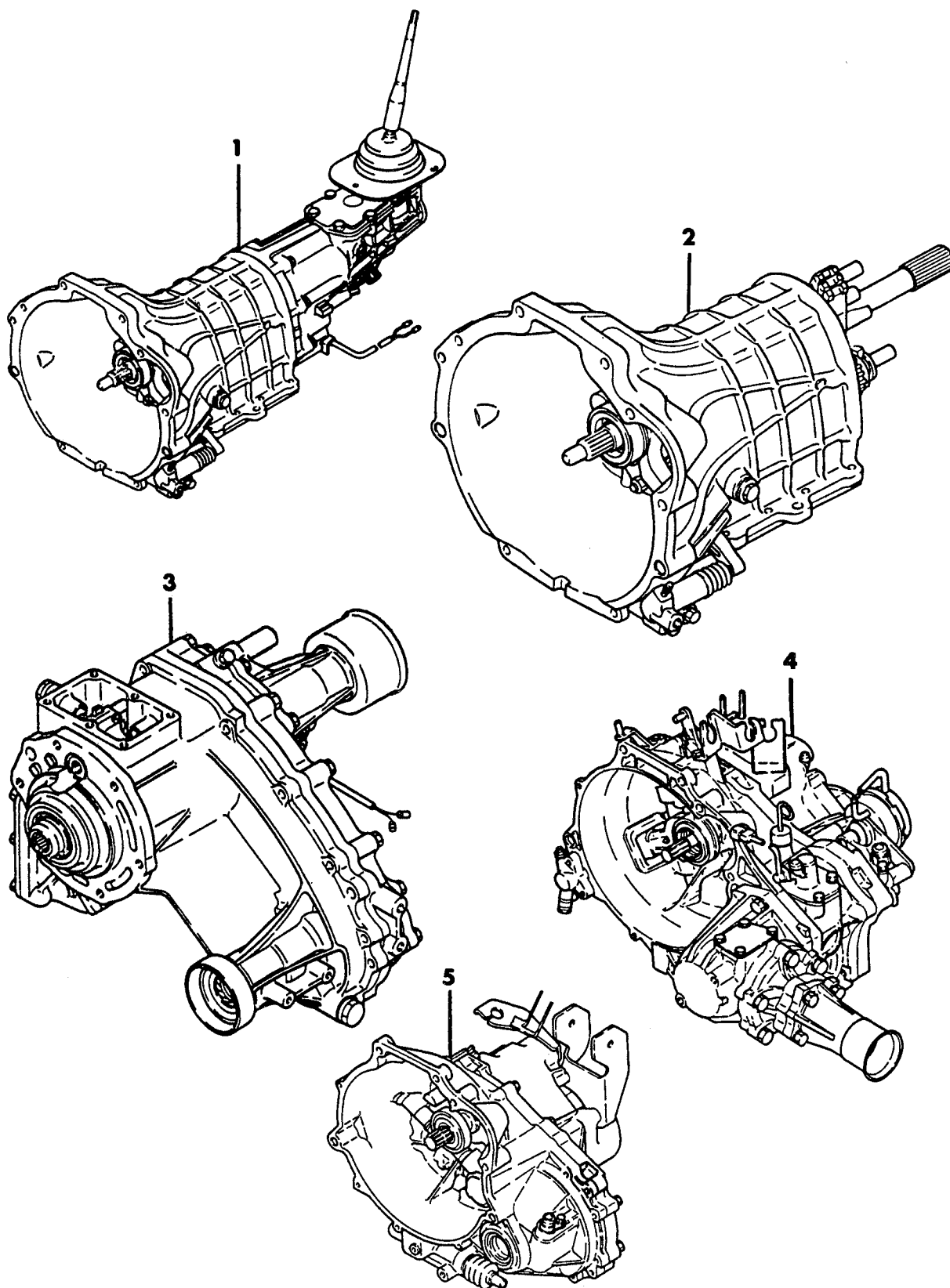


TRANSMISSION, TRANSAXLE, TRANSFER CASE, ASSEMBLIES
MANUAL TRANS., AND GASKET PACKAGES
ALL MODELS**7721 100**

1987-88 IMPORT PARTS CATALOG

Figure 21M-100
Illus. Page 21M-5

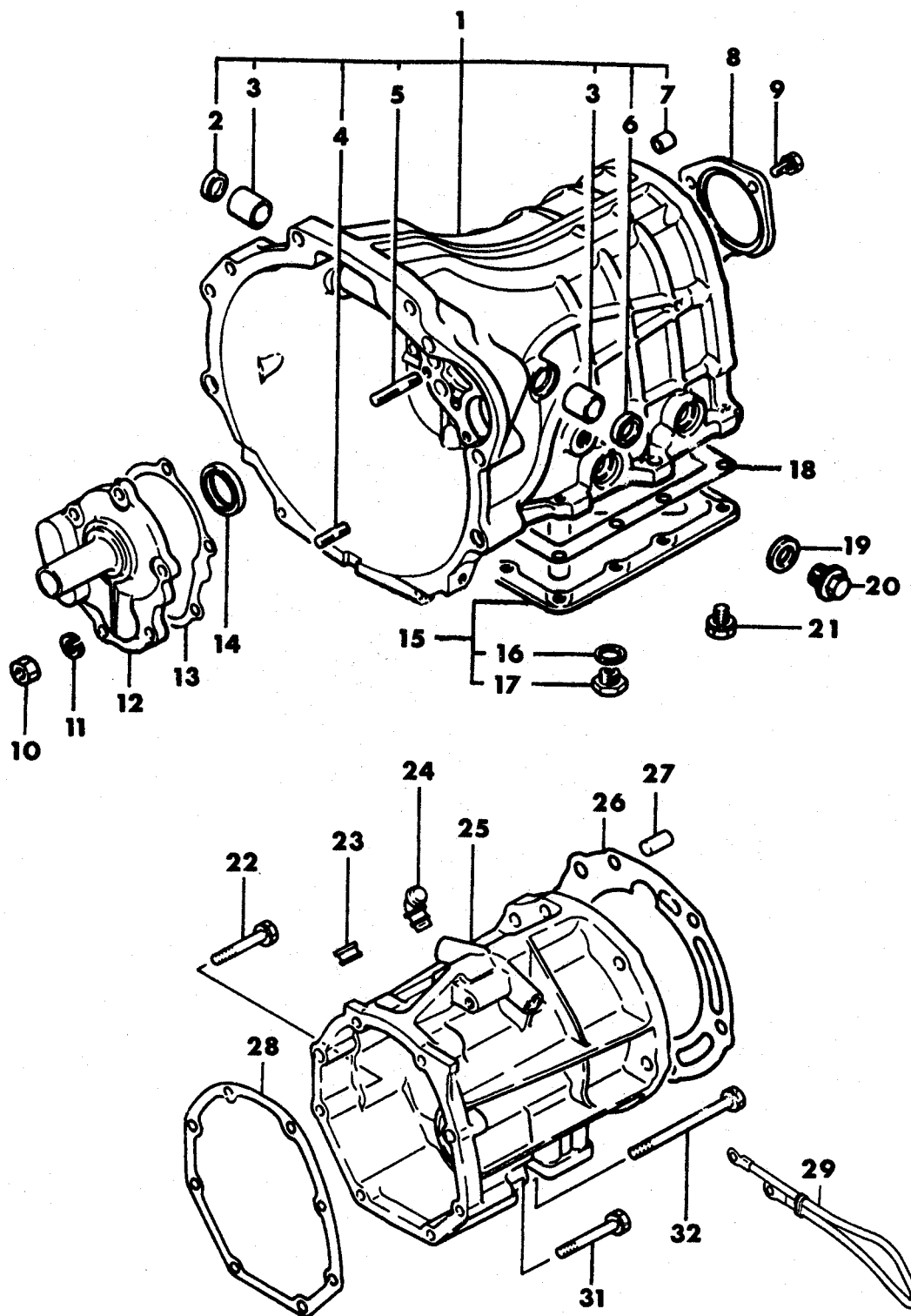
TRANSMISSION, MANUAL

ITEM	PART NUMBER	QTY	BODY	MODEL	DESCRIPTION
TRANSMISSION, TRANSAXLE, TRANSFER CASE, ASSEMBLIES MANUAL TRANS., AND GASKET PACKAGES ALL MODELS					
1	TRANSMISSION ASSEMBLY				
	MD99 5204	1	24 RWD		Trans. KM132-B-BNUL, F Eng. 5 Speed Trans., w/TURBO w/o Intercooler, 1987
	MD99 5205	1	24 RWD		KM132-G-CNL, F Eng. 5 Speed Trans., w/TURBO w/Intercooler, 1987
	MD99 5437	1	24 RWD		KM132-M-CNL, F Eng. 5 Speed Trans., w/TURBO w/Intercooler, 1988
	MD99 5188	1	27 RWD		KM132-8-TDL, A Eng. 5 Speed Trans., 1987
	MD99 5334	1	27 RWD		KM132-K-DL, A Eng. 5 Speed Trans., 1988
	MD99 5288	1	27 RWD		KM132-I-BL, W Eng. 5 Speed Trans., 1987
	MD99 5287	1	27 RWD		KM132-I-FL, W Eng. 5 Speed Trans., 1988
2	TRANSMISSION ASSEMBLY				
	MD72 4278	1	27 4WD		KM145-8, W Eng. 5 Speed Trans.
	MD72 4273	1	27 RAIDER		KM145-9, W Eng. 5 Speed Trans.
3	TRANSFER CASE ASSEMBLY				
	#MD72 1243	1	27 4WD		KM145, W Eng., w/5 Speed Trans., 1987
	MD72 9807	1	27 4WD		KM145, W Eng., w/5 Speed Trans., 1988
	MD72 6538	1	27 4WD		KM148-4, W Eng., w/Automatic Trans., 1987
	MD72 9808	1	27 4WD		W Eng., w/Automatic Trans., 1988
	MD72 4279	1	27 RAIDER		KM145, W Eng., w/5 Speed Trans.
	MD72 6536	1	27 RAIDER		KM148-2, W Eng., w/Automatic Trans.
4	TRANSAXLE ASSEMBLY, w/Transfer 4WD				
	MD99 5189	1	45 4WD		KM182-0-A, A Eng. 5 Speed Trans.
5	TRANSAXLE ASSEMBLY				
	MD99 5228	1	24 FWD		KM200-0-BSL, Q Eng. 4 Speed Trans.
	MD99 5240	1	24,41 FWD		KM201-0-CSL, Q Eng. 5 Speed Trans., 1987
	MD99 5406	1	24,41 FWD		KM201-0-CSQL, Q Eng. 5 Speed Trans., 1988
	MD99 5358	1	45 FWD		KM201-0-CKSL, Q Eng. 5 Speed Trans., 1988
	MD99 5244	1	24,41 FWD		KM206-0-CKL, K Eng. 5 Speed Trans.
	MD99 5134	1	45 FWD		KM163-0-B, A Eng. 5 Speed Trans., Up To Nov. 1986
	MD99 5327	1	45 FWD		KM206-0-CKZ, A Eng. 5 Speed Trans., After Nov. 1986
	GASKET PACKAGE, Transmission				
	MD99 7718	1	24 RWD		F Eng. 5 Speed Trans., 1987
	MD99 7829	1	24 RWD		F Eng. 5 Speed Trans., 1988
	MD70 3968	1	27 RWD		A Eng. 5 Speed Trans.
	MD99 7717	1	27 RWD		W Eng. 5 Speed Trans.
	MD99 7721	1	27 4WD		W Eng. 5 Speed Trans.
	MD99 7721	1	27 RAIDER		W Eng. 5 Speed Trans.
	Consists Of:				
	Gasket, Frt. Brg. Retainer (1)				
	Gasket, Ext. Hsg. (1)				
	Gasket, Case Cover (1)				
	Gasket, Shift Tower (1)				
	Gasket, G/Shift Lever Plate (2)				
	GASKET PACKAGE, Transfer Case				
	MD99 7711	1	27 4WD		W Eng. Automatic Trans., 1987
	MD99 7758	1	27 4WD		W Eng. Automatic Trans., 1988
	MD99 7757	1	27 4WD		W Eng. 5 Speed Trans.
	MD99 7757	1	27 RAIDER		W Eng. 5 Speed Trans.

ENGINE:	Q=1500 cc	A=2000 cc	TRANS:	A=Automatic	4=4-Speed Manual
Blank=All	K=1600 cc (w/o Balance Shaft)	F=2600 cc (Car)	Blank=All	M=All Manual	5=5-Speed Manual
	W=2600 cc (Truck)				8=4 x 2 Manual
SERIES:	H=High	MODELS: 24 FWD=2-Dr Hatchback (Colt)		27 RWD-4WD=Pickup (Ram 50, Power Ram 50)	
L=Low	P=Premium	24 RWD=2-Dr Hatchback (Conquest)		27 4WD=Sport Utility (Raider)	
M=Medium	S=Special	41 FWD=4-Dr Sedan (Colt & Eagle Vista)		45 FWD=4-Dr Station Wagon (Colt)	
				45 FWD-4WD=Station Wagon (Vista)	
AR=Use as Required		# = New Part Number	- = Non Illustrated Part		Printed in U.S.A.
					FEBRUARY, 1989

7721 800 A

CASE AND ADAPTER
MANUAL TRANSMISSION, 5-SPEED
24 RWD, 27 RWD, 27 4WD, 27 RAIDER



1987-88 IMPORT PARTS CATALOG

Figure 21M-600
Illus. Page 21M-7

TRANSMISSION, MANUAL

ITEM	PART NUMBER	QTY	BODY	MODEL	DESCRIPTION
CASE AND ADAPTER					
MANUAL TRANSMISSION, 5-SPEED					
24 RWD, 27 RWD, 27 4WD, 27 RAIDER					
1	MD70 3962	1		24	CASE ASSEMBLY, Trans., F Eng. 5 Speed Trans., w/TURBO w/o Intercooler
	MD72 5856	1		P-24	F Eng. 5 Speed Trans., w/TURBO w/Intercooler
	MD72 3815	1		27 RWD	A Eng. 5 Speed Trans.
	MD72 5272	1		27 RWD	W Eng. 5 Speed Trans.
	MD72 5272	1		27 4WD	W Eng. 5 Speed Trans.
	MD72 5856	1		27 RAIDER	W Eng. 5 Speed Trans.
2	MD70 1867	1		27	CAP
3	MD70 1248	2		27	BUSHING, Clutch Control Shaft
4	MS40 1325	5			STUD, (8x20) A Eng.
	MS40 1327	5			(8x25) W Eng.
5	MS40 1332	1			STUD, (8x38)
6	MD70 1721	1		27	OIL SEAL
7	MS47 1104	2			BUSHING, Knock, (8x9)
8	MD70 3416	1		27 RWD	RETAINER, Bearing Rear, A Eng.
	MD71 7089	1			F,W Eng.
	MD72 7578	1		P-24	1988
9	MD70 0758	3		27 RWD	SCREW, w/Washer, (8x20), A Eng.
	MD70 4449	4			BOLT, F,W Eng.
10	MF43 0005	6			NUT, (8)
11	MF45 0405	6			WASHER, Spring, (8)
12	MD70 3573	1		24	RETAINER, Bearing, Front, w/TURBO w/o Intercooler
	MD72 5129	1		P-24	w/TURBO w/Intercooler, 1987
	MD72 7298	1		P-24	1988
	MD70 3388	1		27 RWD	A Eng.
	MD72 5211	1		27	W Eng.
	MD72 5129	1		27 RAIDER	W Eng.
13	MD71 3503	1		24	GASKET, Bearing Retainer, Front, w/TURBO w/o Intercooler
	MD72 5130	1		P-24	w/TURBO w/Intercooler
	MD72 5130	1		27	W Eng., 1987
	MD71 3503	1		27	W Eng., 1988
	MD70 3734	1		27 RWD	A Eng.
14	MD72 3202	1			OIL SEAL
15	MD70 3443	1			COVER ASSEMBLY, Under
	MD72 7553	1		P-24	1988
16	MD01 6339	1			PACKING
	MD00 0312	1		P-24	GASKET, (18.2), 1988
17	MB00 1293	1			PLUG ASSEMBLY, Magnet
18	MD70 3796	1			GASKET, Under Cover
	MD72 7531	1		P-24	RING, Under Cover, Seal, 1988
19	MF66 0036	1			GASKET, (16)
20	MD70 1850	1			PLUG, (16x16)
21	MF14 0022	12			BOLT, w/Washer, (8x16)
	MD70 0760	12		P-24	(8x30), 1988
22	MD70 0763	5		27 4WD	BOLT, w/Washer, (8x55)
23	MD70 4223	1		27 4WD	PLUG
24	MD71 5206	1		27 4WD	BREATHER, Air
25	MD71 7656	1		27 4WD	ADAPTER, Transfer Case, Up To Sept. 87
	MD72 9949	1		27 4WD	After Sept. 87
26	MD70 4140	1		27 4WD	GASKET, Adapter
27	MF47 2406	1		27 4WD	PIN, Dowel, (12x24)

ENGINE: Q=1500 cc
Blank=All K=1600 cc (w/o Balance Shaft)
W=2600 cc (Truck)

A=2000 cc
F=2600 cc (Car)

TRANS: A=Automatic
Blank=All M=All Manual

4=4-Speed Manual
5=5-Speed Manual
8=4 x 2 Manual

SERIES: H=High L=Low M=Medium
MODELS: 24 FWD=2-Dr Hatchback (Colt) 27 RWD=4WD=Pickup (Ram 50, Power Ram 50)
24 RWD=2-Dr Hatchback (Conquest) 27 4WD=Sport Utility (Raider) 45 FWD=4-Dr Station Wagon (Colt)
41 FWD=4-Dr Sedan (Colt & Eagle Vista) 45 FWD=4-Dr Station Wagon (Vista)

AR=Use as Required

#=New Part Number

--=Non Illustrated Part

Printed in U.S.A.

FEBRUARY, 1989

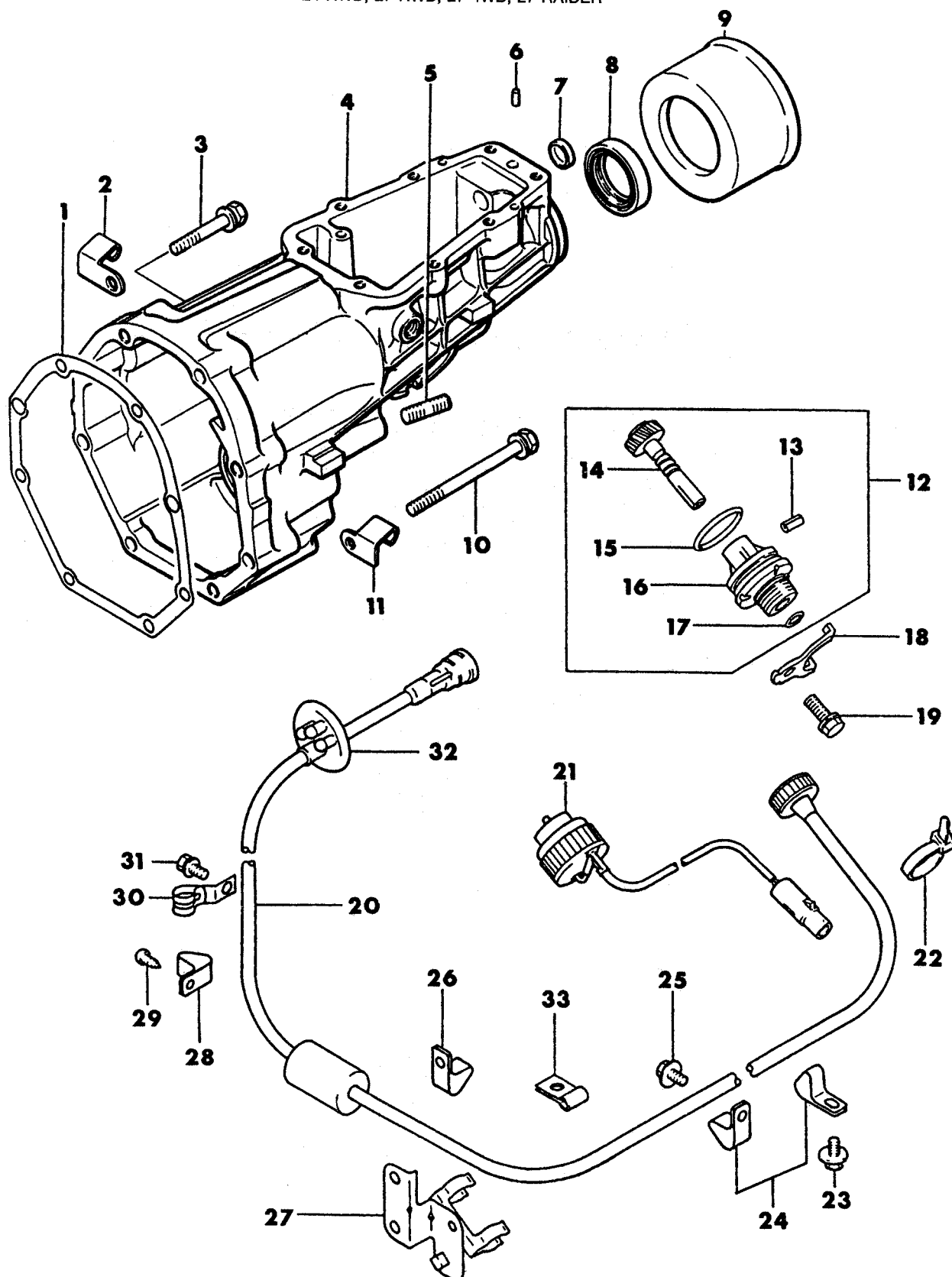
1987-88 IMPORT PARTS CATALOG

Figure 21M-600
Illus. Page 21M-8

TRANSMISSION, MANUAL

ITEM	PART NUMBER	QTY	BODY	MODEL	DESCRIPTION
CASE AND ADAPTER					
MANUAL TRANSMISSION, 5-SPEED					
24 RWD, 27 RWD, 27 4WD, 27 RAIDER					
28	MD70 3812	1		27 4WD	GASKET, Adapter
29	MB41 5787			27 4WD	CABLE, Earth
31	MD70 0764	1		27 4WD	BOLT, w/Washer, (8x65)
32	MD70 0767	2		27 4WD	BOLT, w/Washer, (8x110), 1987
	MD72 6989	2			1988
	MD72 6988	1		27-RAIDER	1988

ENGINE:		Q=1500 cc	A=2000 cc	TRANS:		A=Automatic	4=4-Speed Manual
Blank=All		K=1600 cc (w/o Balance Shaft)	F=2600 cc (Car)	Blank=All		M=All Manual	5=5-Speed Manual
		W=2600 cc (Truck)					8=4 x 2 Manual
SERIES:		H=High	MODELS:		24 FWD=2-Dr Hatchback (Colt)	27 RWD-4WD=Pickup (Ram 50, Power Ram 50)	
L=Low		P=Premium			24 RWD=2-Dr Hatchback (Conquest)	27 4WD=Sport Utility (Raider)	45 FWD=4-Dr Station Wagon (Colt)
M=Medium		S=Special			41 FWD=4-Dr Sedan (Colt & Eagle Vista)		45 FWD-4WD=Station Wagon (Vista)
AR=Use as Required		# =New Part Number	— =Non Illustrated Part		Printed in U.S.A.		FEBRUARY, 1989

7721 700EXTENSION, SPEEDOMETER CABLE AND PINION
MANUAL TRANSMISSION, 5-SPEED
24 RWD, 27 RWD, 27 4WD, 27 RAIDER

1987-88 IMPORT PARTS CATALOG

Figure 21M-700
Illus. Page 21M-11

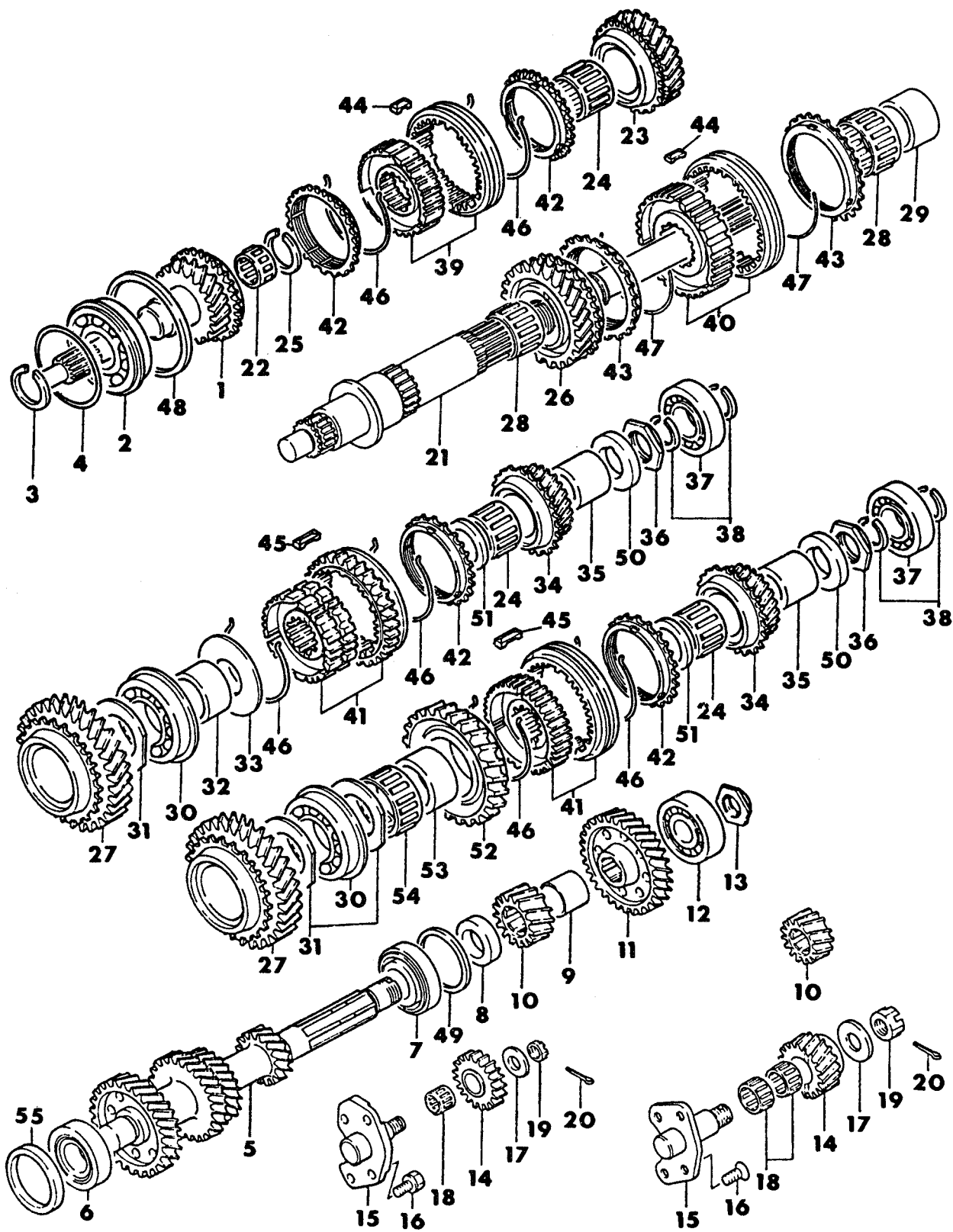
TRANSMISSION, MANUAL

ITEM	PART NUMBER	QTY	BODY	MODEL	DESCRIPTION
EXTENSION, SPEEDOMETER CABLE AND PINION MANUAL TRANSMISSION, 5-SPEED 24 RWD, 27 RWD, 27 4WD, 27 RAIDER					
1	MD70 3812	1			GASKET, Extension Housing
2	MD70 3740	1			FASTENER, Cord, (RT)
3	MD70 0763	6			BOLT, w/Washer, (8x55)
4-8	MD71 1771	1			HOUSING ASSEMBLY, Extension
4		1			HOUSING, Extension (Serv. in Assy.)
5	MS40 1450	2			STUD, (10x25)
6	MF47 2402	2			PIN, Dowel, (5x12)
7	MD70 1803	1			CAP, Control Shaft
8	MD70 3743	1			OIL SEAL, Rear
9	MD70 0154	1			GUARD, Dust Seal
10	MD70 0767	2			BOLT, w/Washer, (8x110)
11	MD70 3741	1			FASTENER, Cord, (LT)
12	MD70 5422	1		24	SLEEVE ASSEMBLY, Speedometer, F Eng., w/TURBO w/o Intercooler
	MD70 5423	1		P-24	F Eng., w/TURBO w/Intercooler
	MD70 5424	1		27-RWD	A Eng.
	MD70 5422	1		27	W Eng.
13	MF47 2536	1			PIN, Spring (3x16)
14	MD70 5462	1		24	GEAR, Speedometer Driven (23NT) F Eng., w/TURBO w/o Intercooler
	MD70 5463	1		P-24	F Eng., w/TURBO w/Intercooler (23NT)
	MD70 5464	1		27-RWD	A Eng., (24NT)
	MD70 5462	1		27	W Eng., (22NT)
15	MF52 0403	1			O-RING, (35)
16	MD70 5450	1			SLEEVE, Speedometer Driven Gear
17	MD70 1788	1			O-RING, (B)
18	MD70 5451	1			CLAMP, Sleeve
19	MF24 1252	1			BOLT, w/Washer, (8x18)
20	MB41 5430	1		27-RWD	CABLE, Speedometer, 59-1/4" Lg.
	MB18 3886	1		24	
21	MB38 5188	1		24	PULSE GENERATOR, (LCD), w/Liquid Crystal Display
	MB19 3088	1		24	w/o Liquid Crystal Display
22	MS47 0087	1		24	CLIP, Cable (122)
	MB07 0453	1		27	
23	MF24 3649	1		27	BOLT, w/Washer, (8x16)
24	MB14 1310	1		24	CLIP, Cable Holding
25	MS24 0141	2		24	BOLT, w/Washer (6x16)
26	MB14 1310	1		24	CLIP, Cable Holding
27	MB28 5919	1		24	CLAMP ASSEMBLY, (LCD)
28	MB09 8602	1		24	CLIP, Chassis Harness
29	MF45 5031	1		24	SCREW, Tapping (5x12)
30	MS47 0059	1		24	CLIP, Cable (80)
31	MS24 0121	1		24	BOLT, w/Washer (6x16), (LCD)
32	MB48 8152	1		24	GROMMET, Cable (4), (LCD)
33	MB19 6524	1		27	CLIP, Cable Holding
-	MB41 5787	1		27 RWD	CABLE, Earth, 1988

ENGINE:		Q=1500 cc	A=2000 cc	TRANS:	A=Automatic	4=4-Speed Manual
Blank=All		K=1600 cc (w/o Balance Shaft)	F=2600 cc (Car)	Blank=All	M=All Manual	5=5-Speed Manual
		W=2600 cc (Truck)				8=4 x 2 Manual
SERIES:		H=High	MODELS:		24 FWD=2-Dr Hatchback (Colt)	27 RWD-4WD=Pickup (Ram 50, Power Ram 50)
L=Low		P=Premium			24 RWD=2-Dr Hatchback (Conquest)	27 4WD=Sport Utility (Raider)
M=Medium		S=Special			41 FWD=4-Dr Sedan (Colt & Eagle Vista)	45 FWD=4-Dr Station Wagon (Colt)
						45 FWD-4WD=Station Wagon (Vista)
AR=Use as Required		# =New Part Number	- =Non Illustrated Part		Printed in U.S.A.	FEBRUARY, 1989

7721 800

GEAR TRAIN
 MANUAL TRANSMISSION, 5-SPEED
 24 RWD, 27 RWD, 27 4WD, 27 RAIDER



1987-88 IMPORT PARTS CATALOG

Figure 21M-800
Illus. Page 21M-13

TRANSMISSION, MANUAL

ITEM	PART NUMBER	QTY	BODY	MODEL	DESCRIPTION
GEAR TRAIN					
MANUAL TRANSMISSION, 5-SPEED					
24 RWD, 27 RWD, 27 4WD, 27 RAIDER					
1	MD70 3707	1		27 RWD	GEAR, Main Drive, A Eng.
	MD70 3782	1		27	W Eng.
	MD70 3782	1		24	F Eng., w/TURBO w/o Intercooler
	MD71 5579	1		P-24	F Eng., w/TURBO w/Intercooler, 1987
	MD72 7219	1		P-24	1988
	MD72 5078	1		27 RAIDER	W Eng.
2	MD70 3799	1		27-RWD	BEARING, Ball, A Eng.
	MD72 5209	1		27	W Eng.
	MD70 3799	1		24	BEARING, Ball, w/TURBO w/o Intercooler
	MD71 5576	1		P-24	w/TURBO w/Intercooler, 1987
	MD72 8055	1		P-24	1988
	MD71 5576	1		27 RAIDER	W Eng.
3	MD70 1729	AR			SNAP RING, T=2.30mm
	MD70 1730	AR			T=2.35mm
	MD70 1731	AR			T=2.40mm
	MD70 1732	AR			T=2.45mm
	MD70 1733	AR			T=2.50mm
4	MD70 1845	AR		24,27	SPACER, T=0.84mm
	MD70 1839	AR		24,27	T=0.93mm
	MD70 1840	AR		24,27	T=1.02mm
	MD70 1841	AR		24,27	T=1.11mm
	MD70 1842	AR		24,27	T=1.20mm
	MD70 1843	AR		24,27	T=1.29mm
	MD70 1844	AR		24,27	T=1.38mm
	MD72 5212	AR			F,W Eng.
	MD72 5213	AR			F,W Eng.
	MD72 5214	AR			F,W Eng.
	MD72 5215	AR			F,W Eng.
	MD72 5216	AR			F,W Eng.
5	MD71 7179	1		27 RWD	GEAR, Countershaft Cluster, A Eng.
	MD71 7609	1		27	W Eng., Up To Sept. 87
	MD72 8215	1		27	W Eng., After Sept. 87
	MD70 3815	1		24	w/TURBO w/o Intercooler
	MD71 5314	1		P-24	w/TURBO w/Intercooler, 1987
	MD73 0795	1		P-24	1988
6	MD71 6038	1		27 RWD	BEARING, Countershaft, Front, A Eng.
	MD71 7159	1		24,27	Taper Roller, F,W Eng.
	MD72 7458	1		P-24	1988
7	MD70 3794	1		27 RWD	BEARING, Countershaft, Rear, A Eng.
	MD71 7159	1		24,27	Taper Roller, F,W Eng.
	MD72 7458	1		P-24	1988
8	MD70 3723	1		27 RWD	SPACER, A Eng.
	MD71 2954	1		24,27	F,W Eng.
9	MD70 3724	1		27 RWD	SPACER, A Eng.
	MD71 4823	1		24,27	F,W Eng., Except P-24, 1988
10	MD70 3772	1		27 RWD	GEAR, Countershaft, Reverse, A Eng.
	MD71 5769	1		24,27	F,W Eng.
11	MD70 3763	1		24	GEAR, C/Shaft, 5th speed, 31Teeth, w/TURBO w/o Intercooler
	MD71 5594	1		P-24	w/TURBO w/Intercooler, 1987
	MD72 7222	1		P-24	1988
	MD71 3863	1		27 RWD	43Teeth, A Eng.

ENGINE: Q=1500 cc A=2000 cc **TRANS:** A=Automatic 4=4-Speed Manual
Blank=All K=1600 cc (w/o Balance Shaft) F=2600 cc (Car) Blank=All M=All Manual 5=5-Speed Manual
W=2600 cc (Truck) 8=4 x 2 Manual

SERIES: H=High **MODELS:** 24 FWD=2-Dr Hatchback (Colt) 27 RWD-4WD=Pickup (Ram 50, Power Ram 50) *
L=Low P=Premium 24 RWD=2-Dr Hatchback (Conquest) 27 4WD=Sport Utility (Raider) 45 FWD=4-Dr Station Wagon (Colt)
M=Medium S=Special 41 FWD=4-Dr Sedan (Colt & Eagle Vista) 45 FWD-4WD=Station Wagon (Vista)

AR=Use as Required

= New Part Number

- = Non Illustrated Part

Printed in U.S.A.

FEBRUARY, 1989

1987-88 IMPORT PARTS CATALOG

Figure 21M-800
Illus. Page 21M-14

TRANSMISSION, MANUAL

ITEM	PART NUMBER	QTY	BODY	MODEL	DESCRIPTION
GEAR TRAIN					
MANUAL TRANSMISSION, 5-SPEED					
24 RWD, 27 RWD, 27 4WD, 27 RAIDER					
	MD70 3763	1		27	W Eng., 1987,88
	MD71 5400	1		27 4WD	W Eng., 1988
12	MD70 3798	1			BEARING, Radial Ball
	MD72 7302	1		P-24	1988
13	MD70 2745	1			NUT, Bearing Lock, Up To Sept. 87
	MD72 7465	1			After Sept. 87
	MD72 7465	1		P-24	1988
14	MD70 3771	1		27 RWD	GEAR, Idler, Reverse, A Eng.
	MD71 5770	1		24,27	F,W Eng.
15	MD70 3697	1		27 RWD	SHAFT, Idler Gear, Reverse, A Eng.
	MD71 4821	1		24,27	F,W Eng.
16	MD70 0758	4		27 RWD	BOLT, w/Washer (8x20) A Eng.
	MD70 4449	4		24,27	F,W Eng.
17	MD70 3738	1		27 RWD	WASHER, Thrust, A Eng.
	MD71 4388	1		24,27	F,W Eng.
18	MD70 1748	1		27 RWD	BEARING, Needle, Reverse Idler, A Eng., 1987
	MD72 6905	1		27 RWD	A Eng., 1988
	MD71 2965	2		24,27	F,W Eng.
19	MF43 1105	1		27 RWD	NUT, Slotted, (12) A Eng.
	MF43 1107	1		24,27	(16) F,W Eng.
20	MG10 3373	1		27 RWD	PIN, Split, A Eng.
	MF47 2085	1		24,27	Cotter, (4x30) F,W Eng.
21	MD71 7011	1		24	SHAFT, Main, 1987
	MD73 0850	1		P-24	1988
	MD70 3761	1		27 RWD	A Eng.
	MD71 7011	1		27 RWD	W Eng.
	MD71 7012	1		27 4WD	W Eng.
	MD71 7012	1		27 RAIDER	W Eng.
22	MD70 4725	1			BEARING, Needle, Up To Dec. 86
	MD72 6907	1			After Dec. 86
	MD73 1433	1		P-24	1988
23	MD70 3777	1			GEAR, 3rd Speed, w/o Intercooler
	MD71 2961	1		P-24	w/TURBO w/Intercooler, 1987
	MD73 0796	1		P-24	1988
24	MD70 1760	1			BEARING, Needle, 3rd Speed Gear
	MD70 1760	1			5th Speed Gear, Up To Aug. 86
	MD72 3201	1			After Aug. 86
	MD72 9188	1		P-24	1988
25	MD70 1761	AR			SNAP RING, T=2.15mm
	MD70 1762	AR			T=2.22mm
	MD70 1763	AR			T=2.29mm
	MD70 1764	AR			T=2.36mm
26	MD70 3774	1			GEAR, 2nd Speed, w/o Intercooler
	MD71 2959	1		P-24	w/TURBO w/Intercooler, 1987
	MD73 0798	1		P-24	1988
27	MD70 3814	1		24	GEAR, 1st Speed, w/TURBO w/o Intercooler
	MD71 2958	1		P-24	w/TURBO w/Intercooler, 1987
	MD73 0807	1		P-24	1988
	MD72 3809	1		27 RWD	A Eng.
	MD71 6103	1		27	W Eng., 1987
	MD72 6712	1		27	W Eng., 1988

ENGINE:	Q=1500 cc	A=2000 cc	TRANS:	A=Automatic	4=4-Speed Manual
Blank=All	K=1600 cc (w/o Balance Shaft)	F=2600 cc (Car)	Blank=All	M=All Manual	5=5-Speed Manual
	W=2600 cc (Truck)				8=4 x 2 Manual

SERIES:	H=High	MODELS:	24 FWD=2-Dr Hatchback (Colt)	27 RWD-4WD=Pickup (Ram 50, Power Ram 50)
L=Low	P=Premium		24 RWD=2-Dr Hatchback (Conquest)	27 4WD=Sport Utility (Raider)
M=Medium	S=Special		41 FWD=4-Dr Sedan (Colt & Eagle Vista)	45 FWD=4-Dr Station Wagon (Colt)
				45 FWD-4WD=Station Wagon (Vista)

AR=Use as Required

#=New Part Number

—=Non Illustrated Part

Printed in U.S.A.

FEBRUARY, 1989

1987-88 IMPORT PARTS CATALOG

Figure 21M-800
Illus. Page 21M-15

TRANSMISSION, MANUAL

ITEM	PART NUMBER	QTY	BODY	MODEL	DESCRIPTION
GEAR TRAIN					
MANUAL TRANSMISSION, 5-SPEED					
24 RWD, 27 RWD, 27 4WD, 27 RAIDER					
28	MD70 3760	2			BEARING, Needle
29	MD70 3768	1			SLEEVE, 1st Speed Gear Bearing
30	MD70 3729	1		24	BEARING, Double Row Ball, w/o Intercooler
	MD71 6917	1		P-24	BEARING, Double Row Angular Ball, w/TURBO w/Intercooler, 1987
	MD72 7572	1		P-24	1988
	MD71 6917	1		27	W Eng.
	MD72 3103	1		27 RWD	BEARING, Radial Ball, A Eng.
31	MD70 3731	2		24	SPACER, w/TURBO w/o Intercooler
	MD70 3769	1		27 RWD	A Eng.
32	MD70 3733	1		27 RWD	SPACER, A Eng.
33	MD70 3809	1		27 RWD	PLATE, Stop, A Eng.
34	MD70 3980	1		24	GEAR, 5th Speed, 18 Teeth, w/o Intercooler
	MD71 5577	1		P-24	w/TURBO w/Intercooler, 1987
	MD72 7223	1		P-24	1988
	MD71 3860	1		27 RWD	25 Teeth, A Eng.
	MD70 3980	1		27	W Eng.
35	MD70 3786	1			SLEEVE, Gear Bearing
	MD72 9176	1		P-24	1988
36	MD70 3748	1			NUT, Locking
	MD72 9178	1		P-24	1988
37	MD70 3856	1		27 RWD	BEARING, Radial Ball, A eng.
	MD70 3754	1		27 RWD	W Eng.
	MD70 3754	1		24	
38	MD70 3779	AR			SNAP RING, T=1.4mm
	MD70 3780	AR			T=1.5mm
39	MD71 9734	1			HUB and SLEEVE, Synch., 3rd & 4th
40	MD71 8407	1			HUB and SLEEVE, Synch., 1st & 2nd
41	MD70 3957	1		27 RWD	HUB and SLEEVE, Synch., 5th & Rev., A Eng.
	MD71 6397	1		27	W Eng.
	MD71 6397	1		24	F Eng., 1987
	MD72 7104	1		P-24	1988
42	MD70 1465	3			RING, Synchronizer
	MD73 0953	1		P-24	RING, Synchronizer, Reverse, 1988
43	MD71 7527	1			RING, Synch., 2nd Speed Gear
	MD71 7528	1			1st Speed Gear
44	MD71 8068	3			KEY, Synch., 1st & 2nd
	MD70 1766	3			3rd & 4th
45	MD71 7678	3		24	KEY, Synch., 5th & Rev.
	MD70 1810	3		27 RWD	5th & Rev., A Eng.
	MD71 7678	3		27	5th & Rev., W Eng.
46	MD70 1897	4			SPRING, Synchronizer, 3rd & 4th
47	MD71 7529	2			SPRING, Synchronizer, 1st & 2nd
48	MD70 3759	1		24	SPACER, w/TURBO w/o Intercooler
49	MD70 6580	AR		24,27	SPACER, T=1.84 (24,27 F.W Eng.) Spacers Listed Below
	MD70 6581	AR		24,27	T=1.87
	MD70 6582	AR		24,27	T=1.90
	MD70 6583	AR		24,27	T=1.93
	MD70 6584	AR		24,27	T=1.96
	MD70 6585	AR		24,27	T=1.99
	MD70 6586	AR		24,27	T=2.02

ENGINE:		Q=1500 cc	A=2000 cc	TRANS:	A=Automatic	4=4-Speed Manual
Blank=All		K=1600 cc (w/o Balance Shaft)	F=2600 cc (Car)	Blank=All	M=All Manual	5=5-Speed Manual
		W=2600 cc (Truck)				8=4 x 2 Manual
SERIES:		H=High	MODELS:		24 FWD=2-Dr Hatchback (Colt)	27 RWD-4WD=Pickup (Ram 50, Power Ram 50)
L=Low	P=Premium				24 RWD=2-Dr Hatchback (Conquest)	27 4WD=Sport Utility (Raider)
M=Medium	S=Special				41 FWD=4-Dr Sedan (Colt & Eagle Vista)	45 FWD=4-Dr Station Wagon (Colt)
						45 FWD-4WD=Station Wagon (Vista)
AR=Use as Required		# =New Part Number	- =Non Illustrated Part		Printed in U.S.A.	
					FEBRUARY, 1989	

1987-88 IMPORT PARTS CATALOG

Figure 21M-800
Illus. Page 21M-16

TRANSMISSION, MANUAL

ITEM	PART NUMBER	QTY	BODY	MODEL	DESCRIPTION
GEAR TRAIN					
MANUAL TRANSMISSION, 5-SPEED					
24 RWD, 27 RWD, 27 4WD, 27 RAIDER					
	MD70 6587	AR		24,27	T=2.05
	MD70 6588	AR		24,27	T=2.08
	MD70 6589	AR		24,27	T=2.11
	MD70 6590	AR		24,27	T=2.14
	MD70 6591	AR		24,27	T=2.17
	MD70 6592	AR		24,27	T=2.20
	MD70 6593	AR		24,27	T=2.23
	MD70 6594	AR		24,27	T=2.26
	MD70 6595	AR		24,27	T=2.29
	MD70 6596	AR		24,27	T=2.32
	MD70 6597	AR		24,27	T=2.35
	MD70 6598	AR		24,27	T=2.38
	MD70 6599	AR		24,27	T=2.41
	MD70 6600	AR		24,27	T=2.44
	MD70 6601	AR		24,27	T=2.47
	MD70 6602	AR		24,27	T=2.50
	MD70 6603	AR		24,27	T=2.53
	MD70 6604	AR		24,27	T=2.56
	MD70 6605	AR		24,27	T=2.59
	MD70 6606	AR		24,27	T=2.62
	MD70 6607	AR		24,27	T=2.65
	MD70 6608	AR		24,27	T=2.68
50	MD70 3787	1			SPACER, (Except P-24, 1988)
	MD72 9179	AR		P-24	SNAP RING, T=2.17, 1988
	MD72 9180	AR		P-24	T=2.36, 1988
	MD72 9181	AR		P-24	T=2.55, 1988
	MD72 9182	AR		P-24	T=2.74, 1988
	MD72 9183	AR		P-24	T=2.93, 1988
	MD72 9184	AR		P-24	T=3.12, 1988
	MD72 9185	AR		P-24	T=3.31, 1988
	MD72 9186	AR		P-24	T=3.50, 1988
	MD72 9187	AR		P-24	T=3.69, 1988
	MF54 0006	1		24	BALL, Spacer to M/Shaft Steel 3/16" Dia., 1987 (Not Shown)
51	MD70 3758	1		24,27	SPACER, F,W Eng., Up To Aug. 86
		1		24,27	After Aug. 86 (Not Used)
52	MD72 5030	1		24,27	GEAR, Reverse, F,W Eng., 1987
	MD72 6614	1		27	1988
	MD73 0951	1		P-24	1988
53	MD71 7013	1		24,27	SLEEVE, Reverse Gear Bearing, F,W Eng.
54	MD71 3674	1		24,27	BEARING, Reverse Gear Needle, F,W Eng.
55	MD71 5624	1		P-24	SPACER, w/TURBO w/Intercooler
	MD71 5624	1		27 RAIDER	

ENGINE:		Q=1500 cc	A=2000 cc	TRANS:	A=Automatic	4=4-Speed Manual
Blank=All		K=1600 cc (w/o Balance Shaft)	F=2600 cc (Car)	Blank=All	M=All Manual	5=5-Speed Manual
		W=2600 cc (Truck)				8=4 x 2 Manual
SERIES:		H=High	MODELS: 24 FWD=2-Dr Hatchback (Colt)			
L=Low		P=Premium	27 RWD-4WD=Pickup (Ram 50, Power Ram 50)			
M=Medium		S=Special	24 RWD=2-Dr Hatchback (Conquest)			
			27 4WD=Sport Utility (Raider)			
			41 FWD=4-Dr Sedan (Colt & Eagle Vista)			
			45 FWD=4-Dr Station Wagon (Colt)			
			45 FWD-4WD=Station Wagon (Vista)			

AR=Use as Required

=New Part Number

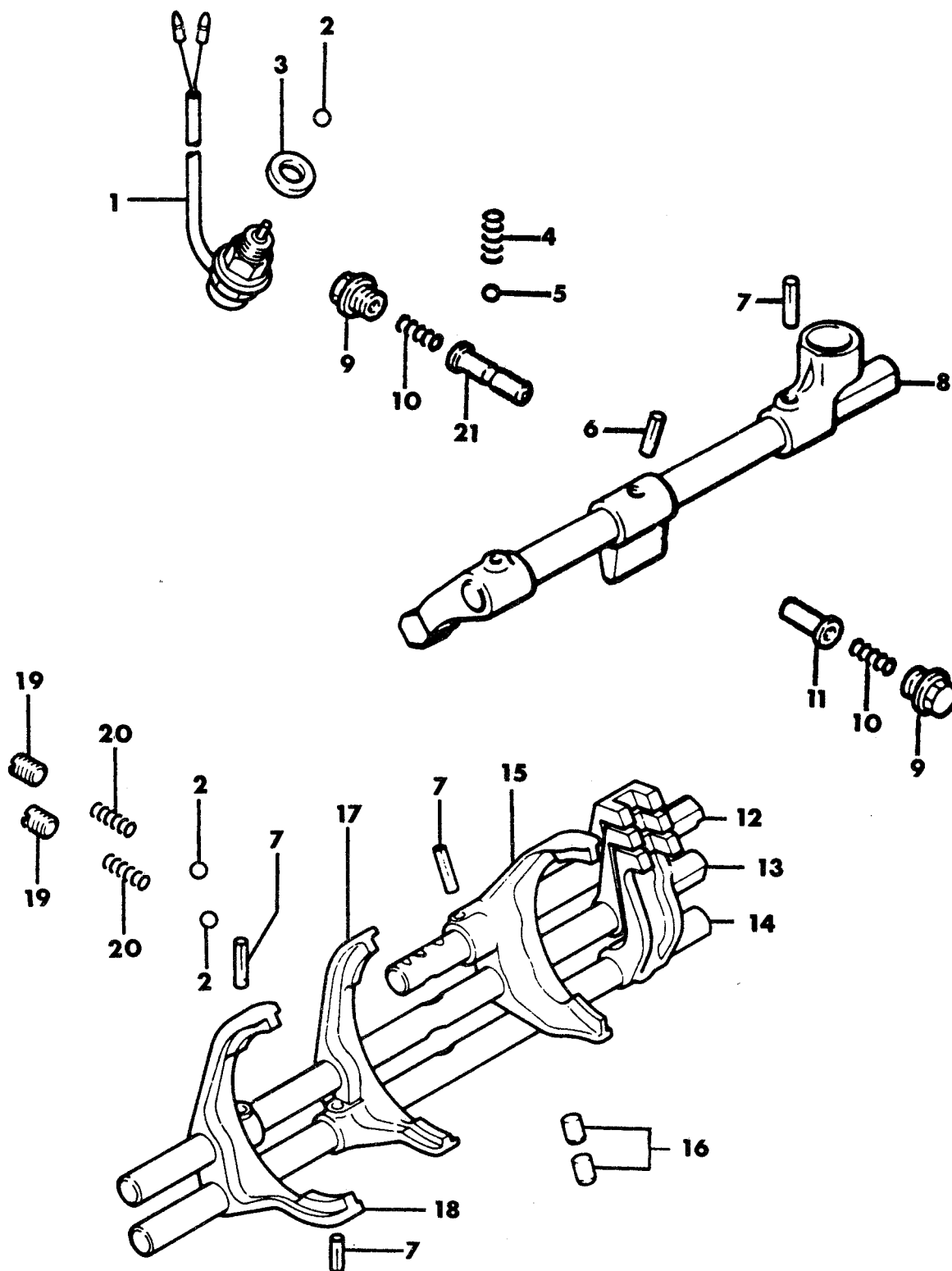
- =Non Illustrated Part

Printed in U.S.A.

FEBRUARY, 1989

7721 800

CONTROL, SHIFT
 MANUAL TRANSMISSION, 5-SPEED
 24 RWD - CONQUEST, 27 RWD - RAM



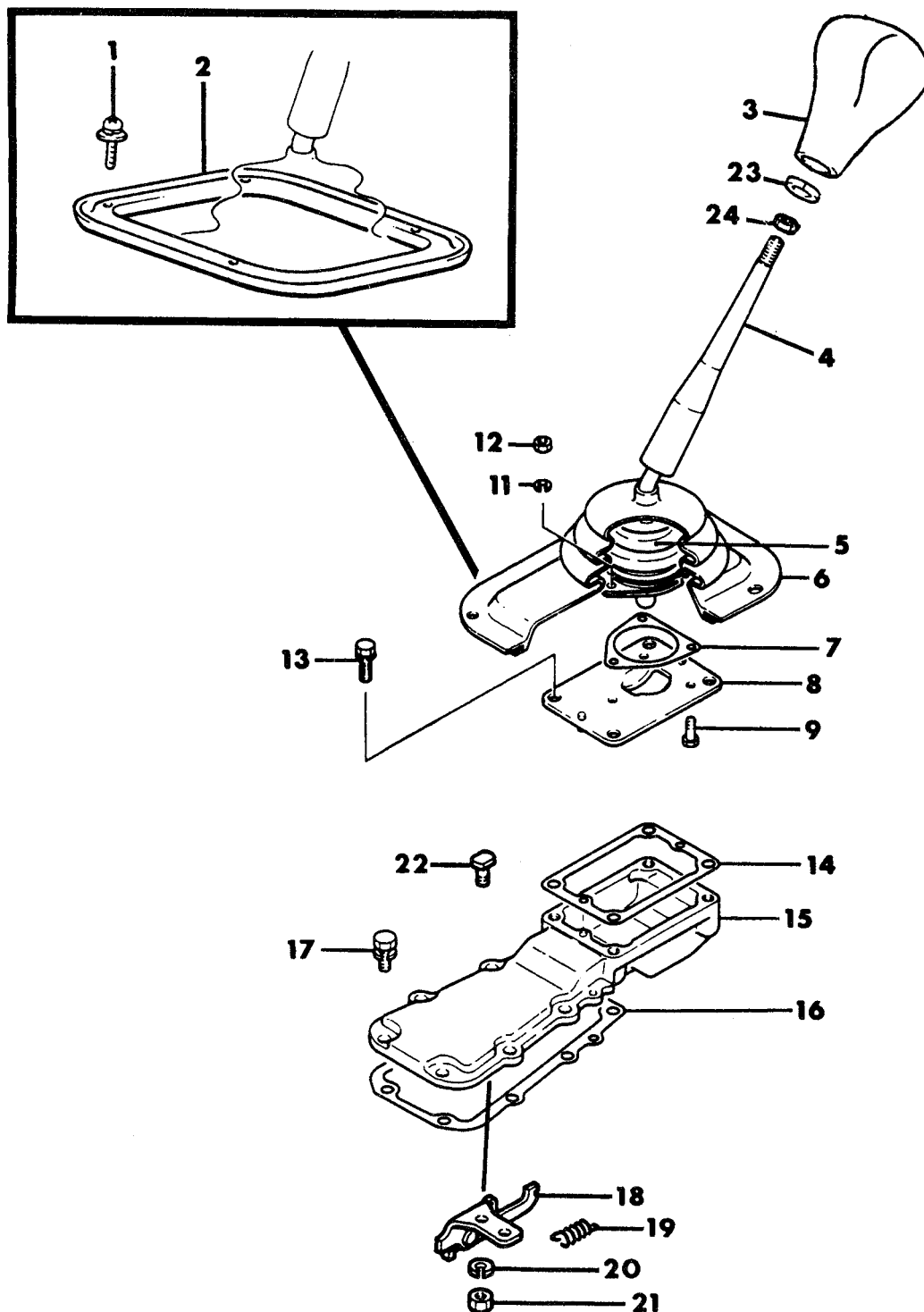
1987-88 IMPORT PARTS CATALOG

Figure 21M-900
Illus. Page 21M-19

TRANSMISSION, MANUAL

ITEM	PART NUMBER	QTY	BODY	MODEL	DESCRIPTION
CONTROL, SHIFT					
MANUAL TRANSMISSION, 5-SPEED					
24 RWD - CONQUEST, 27 RWD - RAM					
1	MD72 2414	1		24	SWITCH ASSEMBLY, Back-Up Light
	MD70 0198	1		27	
2	MF54 0010	4			BALL, Steel, (5/16)
3	MF66 0034	1			GASKET, (12)
4	MD70 3770	1			SPRING, Resistance
5	MF54 0008	1			BALL, Steel, (1/4)
6	MD70 5490	1			PIN, Lock (5x22)
7	MF47 2572	4			PIN, Spring (5x22)
8	MD70 3212	1		24	SHAFT, Sub Assy., Control, Up to Aug. 86
	MD72 5082	1		24	After Aug. 86
	MD70 3215	1		27	Up to Aug. 86
	MD72 5081	1		27	After Aug. 86
9	MD70 0627	2			PLUG, Seal, (B)
10	MD70 3613	2			SPRING, Neutral Return, (B)
11	MD70 3611	1			PLUNGER, Neutral Return, (B)
12	MD71 4825	1		24	RAIL, Sub Assy., Shift, Rev. & O/Drive, Up to Aug. 86
	MD72 6669	1		24	After Aug. 86
	MD71 3812	1		27	A Eng., Up to Aug. 86
	MD72 6668	1		27	A Eng., After Aug. 86
	MD71 4825	1		27	W Eng., Up to Aug. 86
	MD72 6669	1		27	W Eng., After Aug. 86
13	MD70 3577	1			RAIL, Sub Assy., Shift, 3rd & 4th, Up to Aug. 86
	MD72 5058	1			After Aug. 86
14	MD70 3563	1			RAIL, Sub Assy., Shift, 1st & 2nd, Up to Aug. 86
	MD72 5055	1			After Aug. 86
15	MD70 3865	1			FORK, Shift, Rev. & O/Drive
16	MD70 1550	2			PLUNGER, Interlock
17	MD71 8064	1			FORK, Shift, 1st & 2nd
18	MD70 3555	1			FORK, Shift, 3rd & 4th
19	MD70 1799	3			PLUG, (A)
20	MD70 1549	3			SPRING, Poppet
21	MD70 3610	1			PLUNGER, Neutral Return, (A)

ENGINE:		Q=1500 cc	A=2000 cc	TRANS:	A=Automatic	4=4-Speed Manual
Blank=All		K=1600 cc (w/o Balance Shaft)	F=2600 cc (Car)	Blank=All	M=All Manual	5=5-Speed Manual
		W=2600 cc (Truck)				8=4 x 2 Manual
SERIES:		H=High	MODELS:		24 FWD=2-Dr Hatchback (Colt)	27 RWD-4WD=Pickup (Ram 50, Power Ram 50)
L=Low	P=Premium				24 RWD=2-Dr Hatchback (Conquest)	27 4WD=Sport Utility (Raider)
M=Medium	S=Special				41 FWD=4-Dr Sedan (Colt & Eagle Vista)	45 FWD=4-Dr Station Wagon (Colt)
						45 FWD-4WD=Station Wagon (Vista)
AR=Use as Required		# =New Part Number	- =Non Illustrated Part		Printed in U.S.A.	FEBRUARY, 1989

7721 2100CONTROLS, GEARSHIFT
MANUAL TRANSMISSION, 5-SPEED
24 RWD - CONQUEST

1987-88 IMPORT PARTS CATALOG

Figure 21M-2100
Illus. Page 21M-85

TRANSMISSION, MANUAL

ITEM	PART NUMBER	QTY	BODY	MODEL	DESCRIPTION
CONTROLS, GEARSHIFT					
MANUAL TRANSMISSION, 5-SPEED					
24 RWD - CONQUEST					
1	MF35 0794	4			SCREW, (6x20)
2	MB01 3214	1			PLATE, Dust Cover Retaining
3					KNOB, Control Lever
	MB36 7539	1			(Black), 1987
	MB71 8731	1			(Black), 1988
	MB36 7535	1			(D-Red), 1987
	MB71 8732	1			(D-Red), 1988
4-12	MD71 6489	1			LEVER ASSEMBLY, Control
4		1			LEVER, (Serv. in Assy.)
5	MD70 3619	1			COVER, Spring
6	MD70 3650	1			COVER, Control Lever
7	MD70 1723	1			GASKET
8	MD70 3227	1			PLATE, Stopper
9	MD70 3652	3			BOLT, (6x16)
11	MF45 0404	3			WASHER, Spring, (6)
12	MF43 0004	3			NUT, (6)
13	MF24 1255	4			BOLT, w/Washer, (8x25)
14	MD70 3655	1			GASKET, Control Lever
15	MD70 3197	1			COVER, Extension Housing
16	MD70 3755	1			GASKET, Extension Housing Cover
17	MD70 0758	8			BOLT, w/Washer, (8x20)
18	MD70 3236	1			BRACKET, Stopper
19	MD70 3192	1			SPRING, Return
20	MF45 0405	2			WASHER, Spring, (8)
21	MF43 0841	2			NUT, Jam, (8)
22	MD70 3191	2			BOLT, Special
23	MS45 0043	1			WASHER, Lever Knob, Spring (10)
24	MF43 0726	1			NUT, Lever Knob Jam, (10)

ENGINE:		Q=1500 cc	A=2000 cc	TRANS:	A=Automatic	4=4-Speed Manual
Blank=All		K=1600 cc (w/o Balance Shaft)	F=2600 cc (Car)	Blank=All	M=All Manual	5=5-Speed Manual
		W=2600 cc (Truck)				8=4 x 2 Manual
SERIES:	H=High	MODELS: 24 FWD=2-Dr Hatchback (Colt)		27 RWD-4WD=Pickup (Ram 50, Power Ram 50)		
L=Low	P=Premium	24 RWD=2-Dr Hatchback (Conquest)		27 4WD=Sport Utility (Raider)	45 FWD=4-Dr Station Wagon (Colt)	
M=Medium	S=Special	41 FWD=4-Dr Sedan (Colt & Eagle Vista)			45 FWD-4WD=Station Wagon (Vista)	
AR=Use as Required		# =New Part Number	- =Non Illustrated Part		Printed in U.S.A.	FEBRUARY, 1989