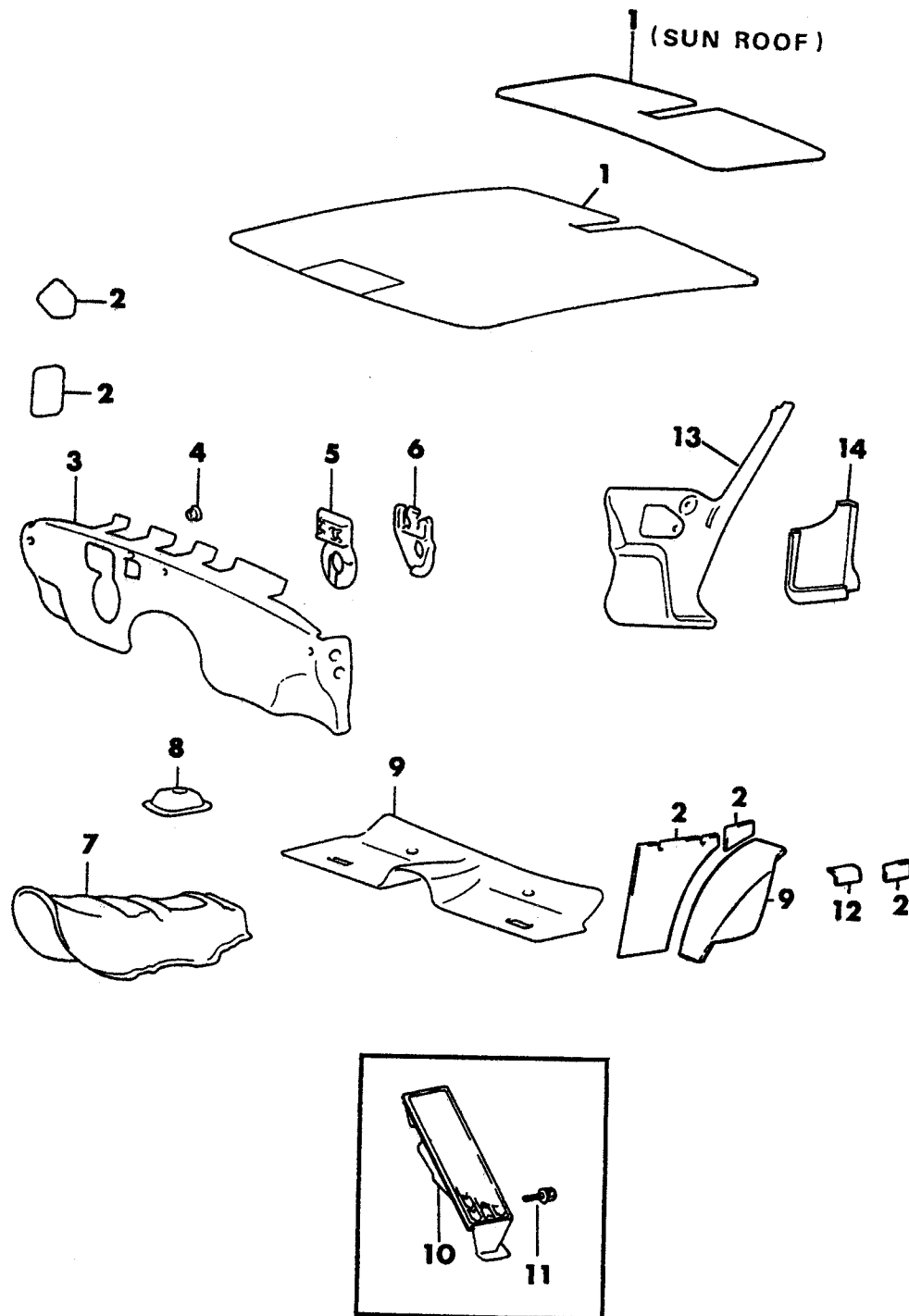


7732 100 ASILENCER AND PADS INTERIOR
24 RWD - CONQUEST

1987-88 IMPORT PARTS CATALOG

Figure ITB-100
Illus. Page ITB-3

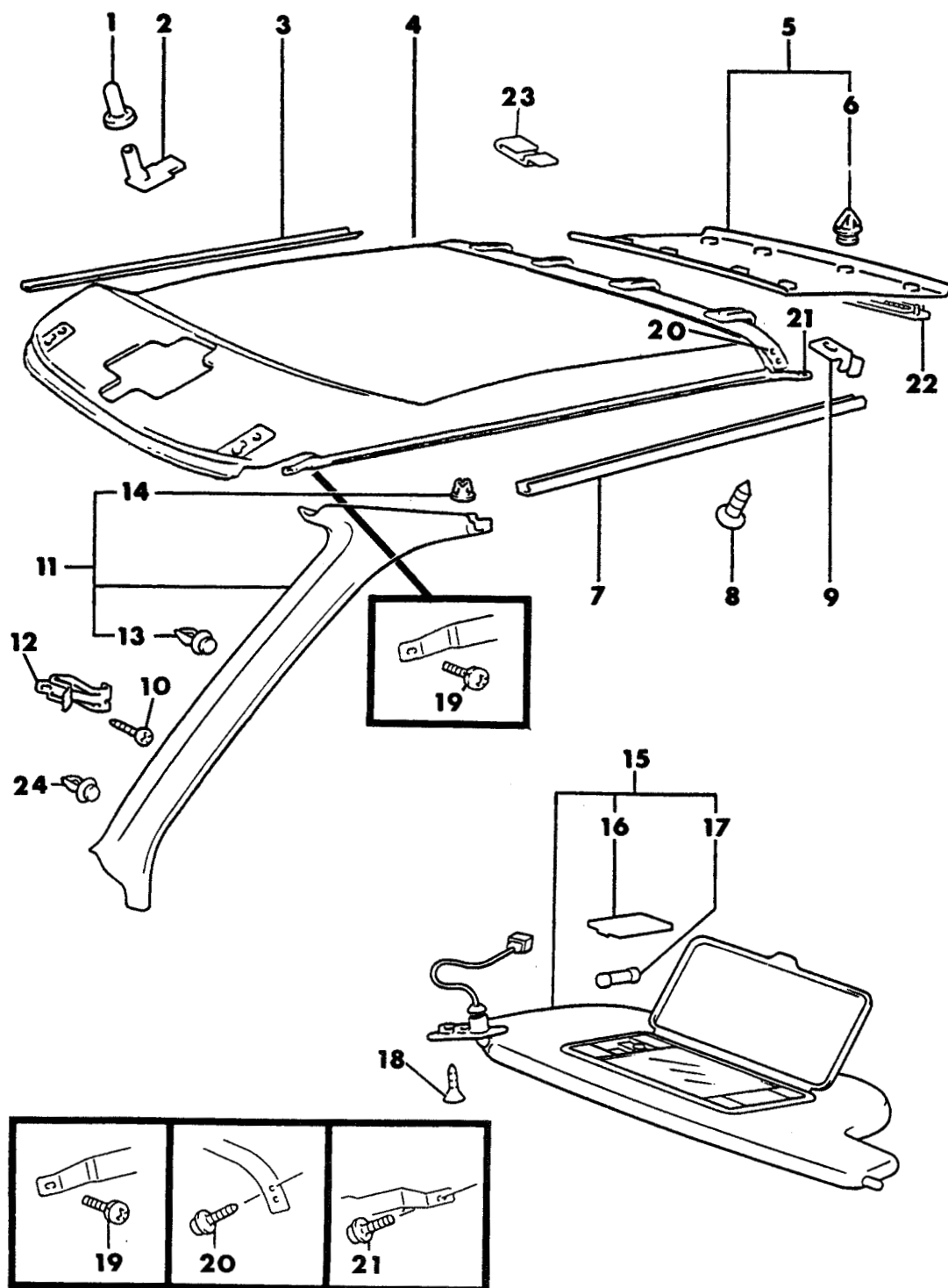
INTERIOR TRIM CONQUEST

ITEM	PART NUMBER	QTY	BODY	MODEL	DESCRIPTION
------	-------------	-----	------	-------	-------------

SILENCER AND PADS INTERIOR 24 RWD - CONQUEST

1	MB18 9413	1			PAD, Roof
	MB22 3484	1			w/Sun Roof
2	MB24 1601	4			PAD, Rough Stock (1000x1000)
3	MB22 2863	1			PAD, Dash Panel
4	MB15 7530	4			CLIP, Dash Panel Pad
5	MB15 7499	1			PAD, Steering Shaft
6	MB15 7752	1			COVER, Steering Shaft
7	MB22 3065	1			PAD, Trans. Tunnel (5 Speed)
	MB34 6061	1			(a/Trans)
8	MB36 1815	1			PAD, Shift Cover
9	MB24 1600	1			PAD, Rough Stock (910x910)
10	MB19 8030	1			FOOTREST
11	MS24 0121	1			BOLT, w/Washer (6x20)
12	MB34 6061	AR			SILENCER, Quarter
13					PANEL, Cowl Trim
					RIGHT
	MB20 7923	1			Red
	#MB46 8086	1			Black
	MB71 7692	1			Beige
					LEFT
	MB20 4388	1			Red
	#MB46 8085	1			Black
	MB71 7689	1			Beige
14					COVER, ECI
					RIGHT
	MB26 3678	1			Red
	#MB46 8100	1			Black
	MB71 7677	1			Beige

ENGINE:		Q=1500 cc	A=2000 cc	TRANS:	A=Automatic	4=4-Speed Manual
Blank=All		K=1600 cc (w/o Balance Shaft)	F=2600 cc (Car)	Blank=All	M=All Manual	5=5-Speed Manual
		W=2600 cc (Truck)				8=4 x 2 Manual
SERIES:		H=High	MODELS: 24 FWD=2-Dr Hatchback (Colt) 27 RWD-4WD=Pickup (Ram 50, Power Ram 50)			
L=Low		P=Premium	24 RWD=2-Dr Hatchback (Conquest) 27 4WD=Sport Utility (Raider) 45 FWD=4-Dr Station Wagon (Colt)			
M=Medium		S=Special	41 FWD=4-Dr Sedan (Colt & Eagle Vista) 45 FWD-4WD=Station Wagon (Vista)			
AR=Use as Required		# = New Part Number	- = Non Illustrated Part		Printed in U.S.A.	FEBRUARY, 1989

7732 200 BHEADLINER, MOULDINGS, AND SUNVISOR
24 RWD - CONQUEST

1987-88 IMPORT PARTS CATALOG

Figure ITB-200
Illus. Page ITB-5

INTERIOR TRIM CONQUEST

ITEM	PART NUMBER	QTY	BODY	MODEL	DESCRIPTION
HEADLINER, MOULDINGS, AND SUNVISOR 24 RWD - CONQUEST					
1	MA12 7993	2			INSERT
2	MB06 8267	2			RETAINER
3	#MB47 6684	1			MOULDING, Headliner Side Garnish - Right
4					HEADLINER
	#MB70 7827	1			Red
	#MB70 7826	1			Black
	MB71 7822	1			Beige
5					HEADLINER, Rear
					w/o Air/Condition
	MB20 4312	1			Red
	MB44 4590	1			Black
					w/Air/Condition
	MB20 4314	1			Red
	MB44 4591	1			Black
	MB71 7838	1			Beige
					w/Sun Roof
	MB71 4742	1			Black
	MB71 4743	1			Red
	MB71 7838	1			Beige
6	MB10 6585	4			CLIP, Trim
7	#MB47 6683	1			MOULDING, Headliner Side Garnish - Left
8	MS45 0155	4			SCREW, Tapping (5x10)
9	MB31 9347	1			RETAINER
10	MS45 0925	2			SCREW, Tapping (5x16)
11					MOULDING, Garnish Front Pillar
					LEFT
	#MB47 8632	1			Red
	#MB47 8631	1			Black
	MB71 7820	1			Beige
					RIGHT
	#MB47 8635	1			Red
	#MB47 8634	1			Black
	MB71 7821	1			Beige
12	#MB47 6550	2			RETAINER, Moulding Lower
13	MB31 7677	4			CLIP, Trim 1987
	MB56 6719	4			CLIP, Trim 1988
14	MB13 2178	2			CLIP, Stud 1987
	MB15 3448	2			CLIP, Stud 1988
15					VISOR, w/Mirror
					RIGHT
	#MB70 8431	1			Red
	#MB70 8430	1			Black
	MB71 7650	1			Beige
					LEFT
	#MB70 8429	1			Red
	#MB70 8428	1			Black
	MB71 7649	1			Beige
					w/Sun Roof
					RIGHT
	MB71 4738	1			Black
	MB71 4739	1			Red

ENGINE:		Q=1500 cc	A=2000 cc	TRANS:	A=Automatic	4=4-Speed Manual
Blank=All		K=1600 cc (w/o Balance Shaft)	F=2600 cc (Car)	Blank=All	M=All Manual	5=5-Speed Manual
		W=2600 cc (Truck)				8=4 x 2 Manual
SERIES:		H=High	MODELS:		24 FWD=2-Dr Hatchback (Colt)	27 RWD-4WD=Pickup (Ram 50, Power Ram 50)
L=Low	P=Premium		24 RWD=2-Dr Hatchback (Conquest)	27 4WD=Sport Utility (Raider)	45 FWD=4-Dr Station Wagon (Colt)	
M=Medium	S=Special		41 FWD=4-Dr Sedan (Colt & Eagle Vista)		45 FWD-4WD=Station Wagon (Vista)	
AR=Use as Required		#=New Part Number	- =Non Illustrated Part		Printed in U.S.A.	FEBRUARY, 1989

1987-88 IMPORT PARTS CATALOG

Figure ITB-200
 Illus. Page ITB-6

INTERIOR TRIM CONQUEST

ITEM	PART NUMBER	QTY	BODY	MODEL	DESCRIPTION
------	-------------	-----	------	-------	-------------

HEADLINER, MOULDINGS, AND SUNVISOR 24 RWD - CONQUEST

	MB71 7648	1			Beige LEFT
	MB71 5889	1			Black
	MB71 5890	1			Red
	MB71 7647	1			Beige
16	MB36 1847	4			LENS, Lamp
17	MB36 1848	4			BULB
18	MF45 4108	4			SCREW, Tapping (5x20)
19	MS35 0200	2			SCREW and WASHER, (4x8)
20	MS20 0306	2			SCREW, (5x12)
21	MS45 0155	2			SCREW, (5x10)
22					VENT, Garnish
	MB20 4316	2			Red
	MB34 5810	2			Black
23	MB18 9072	6			CLIP
24	MB56 6720	2			CLIP

ENGINE:	Q=1500 cc	A=2000 cc	TRANS:	A=Automatic	4=4-Speed Manual
Blank=All	K=1600 cc (w/o Balance Shaft)	F=2600 cc (Car)	Blank=All	M=All Manual	5=5-Speed Manual
	W=2600 cc (Truck)				8=4 x 2 Manual

SERIES:	H=High	MODELS:	24 FWD=2-Dr Hatchback (Colt)	27 RWD-4WD=Pickup (Ram 50, Power Ram 50)
L=Low	P=Premium		24 RWD=2-Dr Hatchback (Conquest)	27 4WD=Sport Utility (Raider)
M=Medium	S=Special		41 FWD=4-Dr Sedan (Colt & Eagle Vista)	45 FWD=4-Dr Station Wagon (Colt)
				45 FWD-4WD=Station Wagon (Vista)

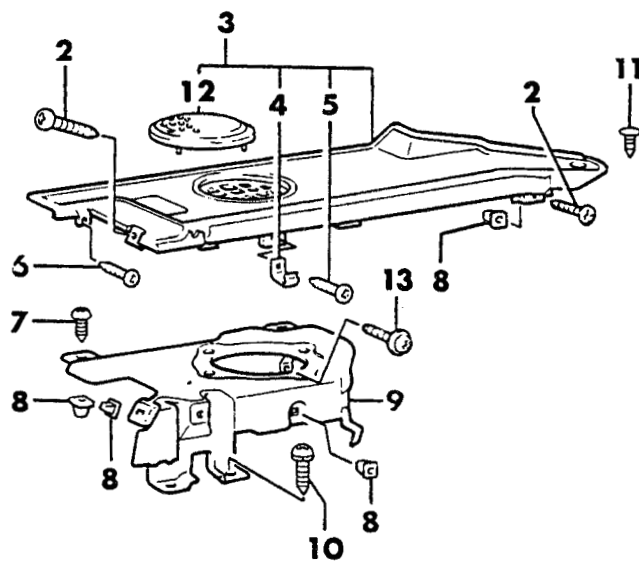
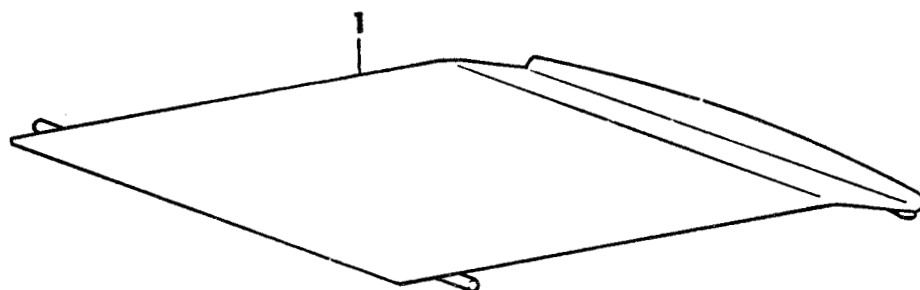
AR=Use as Required

= New Part Number

— = Non Illustrated Part

Printed in U.S.A.

FEBRUARY, 1989

7732 300PANEL REAR SHELF
24 RWD - CONQUEST

1987-88 IMPORT PARTS CATALOG

Figure ITB-300
Illus. Page ITB-9

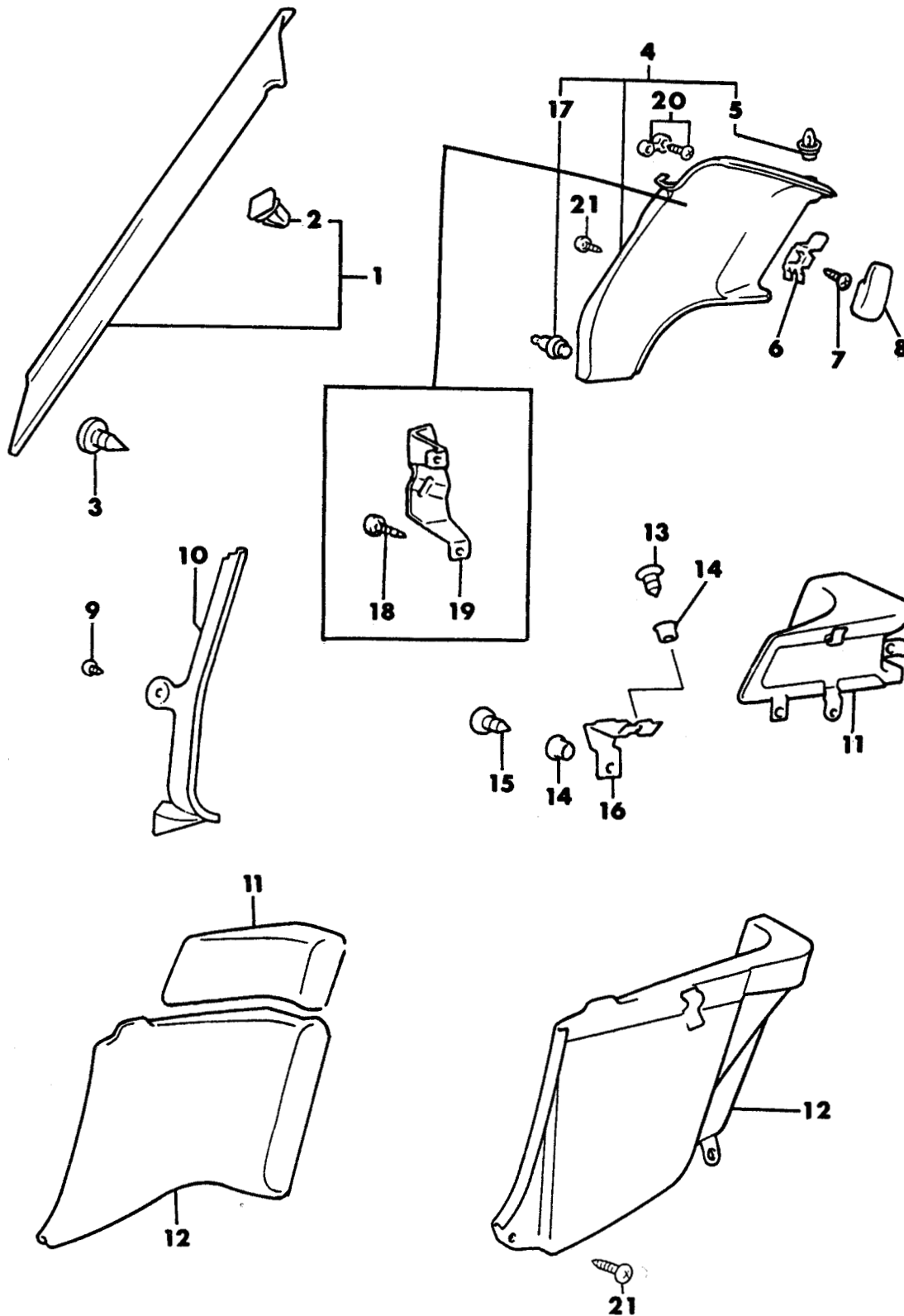
INTERIOR TRIM CONQUEST

ITEM	PART NUMBER	QTY	BODY	MODEL	DESCRIPTION
------	-------------	-----	------	-------	-------------

PANEL REAR SHELF 24 RWD - CONQUEST

1					SHELF, Trim Rear
					CENTER
	#MB49 5503	1			Red
	#MB49 5502	1			Black
2	MF45 3048	8			SCREW, Tapping (6x20)
3					SHELF, Rear Side
					LEFT
	#MB71 1121	1			Red
	#MB71 1120	1			Black
					RIGHT
	#MB71 1123	1			Red
	#MB71 1122	1			Black
4	MB22 3419	2			RETAINER, Rod
5	MF45 3016	2			SCREW, Tapping (4x10)
6	MS45 0176	2			SCREW, Tapping (5x12)
7	MF45 3047	4			SCREW, Tapping (6x16)
	MB22 3246	12			GROMMET (6)
9					BRACKET, Rear Side Shelf
	#MB47 6003	1			Left
	#MB47 6004	1			Right
10	MS35 0129	4			SCREW, w/Washer (6x16)
11	MB18 9333	12			CLIP, Trim (Black)
12					GRILLE, Radio Speaker
	MB24 9439	2			Red, 1987
	MB48 7605	2			Black, 1987
	MB51 0831	2			Red, 1988
	MB51 0830	2			Black, 1988
13	MS45 0156	AR			SCREW, Tapping (5x12)

ENGINE:	Q=1500 cc	A=2000 cc	TRANS:	A=Automatic	4=4-Speed Manual
	Blank=All	F=2600 cc (Car)		M=All Manual	5=5-Speed Manual
	W=2600 cc (Truck)				8=4 x 2 Manual
SERIES:	H=High	MODELS:	24 FWD=2-Dr Hatchback (Colt)	27 RWD-4WD=Pickup (Ram 50, Power Ram 50)	
	L=Low		24 RWD=2-Dr Hatchback (Conquest)	27 4WD=Sport Utility (Raider)	45 FWD=4-Dr Station Wagon (Colt)
	M=Medium		41 FWD=4-Dr Sedan (Colt & Eagle Vista)		45 FWD-4WD=Station Wagon (Vista)
	S=Special				
AR=Use as Required		# =New Part Number	- =Non Illustrated Part		Printed in U.S.A. FEBRUARY, 1989

7732 400 BPANEL QUARTER TRIM
24 RWD - CONQUEST

1987-88 IMPORT PARTS CATALOG

Figure ITB-400
Illus. Page ITB-11

INTERIOR TRIM CONQUEST

ITEM	PART NUMBER	QTY	BODY	MODEL	DESCRIPTION
PANEL QUARTER TRIM 24 RWD - CONQUEST					
1					MOULDING, Rear Pillar w/Retainer
	MB20 4341	1			Left, (Black)
	MB20 4342	1			Right, (Black)
2	MB13 2135	6			CLIP, Rear Pillar Moulding
3	MF45 3090	4			SCREW, Tapping (5x20)
4					PANEL, Quarter Upper Trim w/Clip
					LEFT
					(Use Up To 10-87)
	#MB70 7821	1			Red
	#MB70 7820	1			Black
					(Use After 10-87)
	MB73 1308	1			Red
	MB73 1309	1			Black
					RIGHT
					(Use Up To 10-87)
	#MB70 7824	1			Red
	#MB70 7823	1			Black
					(Use After 10-87)
	MB73 1310	1			Red
	MB73 1311	1			Black
5	MB18 9326	8			CLIP, Quarter Trim Attaching
6	MB10 7400	2			BRACKET, Coat Hanger
7	MF45 3032	2			SCREW, Tapping (5x14)
8					HOOK, Coat
	MB46 8700	2			Black
	#MB46 8701	2			Red
9	MS45 0176	1			SCREW, Tapping (5x12)
10					PANEL, Door Opening Trim
					RIGHT
	#MB46 8086	1			Black
	MB20 7923	1			Red
	MB71 7692	1			Beige
11					BOLSTER, Quarter Trim
					w/o Leather
					LEFT
					(Use Up To 10-87)
	#MB70 8161	1			Black
	#MB70 8162	1			Red
					(Use After 10-87)
	MB73 1191	1			Red
	MB73 1192	1			Black
					RIGHT
					(Use Up To 10-87)
	#MB70 8166	1			Black
	#MB70 8167	1			Red
					(Use After 10-87)
	MB73 1195	1			Red
	MB73 1196	1			Black
					w/Leather
					LEFT
					(Use Up To 10-87)

ENGINE:	Q=1500 cc	A=2000 cc	TRANS:	A=Automatic	4=4-Speed Manual
Blank=All	K=1600 cc (w/o Balance Shaft)	F=2600 cc (Car)	Blank=All	M=All Manual	5=5-Speed Manual
	W=2600 cc (Truck)				8=4 x 2 Manual

SERIES:	H=High	MODELS:	24 FWD=2-Dr Hatchback (Colt)	27 RWD-4WD=Pickup (Ram 50, Power Ram 50)
L=Low	P=Premium		24 RWD=2-Dr Hatchback (Conquest)	27 4WD=Sport Utility (Raider)
M=Medium	S=Special		41 FWD=4-Dr Sedan (Colt & Eagle Vista)	45 FWD=4-Dr Station Wagon (Colt)
				45 FWD-4WD=Station Wagon (Vista)

AR=Use as Required

=New Part Number

- =Non Illustrated Part

Printed in U.S.A.

FEBRUARY, 1989

1987-88 IMPORT PARTS CATALOG

Figure ITB-400
Illus. Page ITB-12

INTERIOR TRIM CONQUEST

ITEM	PART NUMBER	QTY	BODY	MODEL	DESCRIPTION
PANEL QUARTER TRIM 24 RWD - CONQUEST					
	#MB70 8164	1			Black
	#MB70 8165	1			Red
					(Use After 10-87)
	MB73 1193	1			Red
	MB73 1194	1			Black
					RIGHT
					(Use Up To 10-87)
	#MB70 8170	1			Red
	#MB70 8169	1			Black
					(Use After 10-87)
	MB73 1147	1			Red
	MB73 1148	1			Black
12					PANEL, Quarter Lower Trim
					w/o Leather
					LEFT
	#MB70 8172	1			Red
	#MB70 8171	1			Black
	MB72 0396	1			Beige
					RIGHT
	#MB70 8176	1			Black
	#MB70 8177	1			Red
	MB72 0398	1			Beige
					w/Leather
					LEFT
					(Use Up To 10-87)
	#MB70 8174	1			Black
	#MB70 8175	1			Red
	MB72 0397	1			Beige
					(Use After 10-87)
	MB73 1199	1			Red
	MB73 1200	1			Black
	MB73 1201	1			Beige
					RIGHT
					(Use Up To 10-87)
	#MB70 8180	1			Red
	#MB70 8179	1			Black
	MB72 0399	1			Beige
					(Use After 10-87)
	MB73 1202	1			Red
	MB73 1203	1			Black
	MB73 1204	1			Beige
13	MF45 3048	4			SCREW, Tapping (6x20)
14	MB22 3246	4			GROMMET (6)
15	MF45 3031	4			SCREW, Tapping (5x12)
16	MB19 0442	2			BRACKET, Quarter Bolster Trim
17	MB37 4270	4			CLIP, Trim
18	MF45 3031	4			SCREW, Tapping (5x12)
19					BRACKET, Quarter Upper Trim Panel Attaching
	MB56 0087	1			Right
	MB56 0086	1			Left
20					SCREW, Cap

ENGINE:	Q=1500 cc	A=2000 cc	TRANS:	A=Automatic	4=4-Speed Manual
Blank=All	K=1600 cc (w/o Balance Shaft)	F=2600 cc (Car)	Blank=All	M=All Manual	5=5-Speed Manual
	W=2600 cc (Truck)				8=4 x 2 Manual

SERIES:	H=High	MODELS:	24 FWD=2-Dr Hatchback (Colt)	27 RWD-4WD=Pickup (Ram 50, Power Ram 50)
L=Low	P=Premium		24 RWD=2-Dr Hatchback (Conquest)	27 4WD=Sport Utility (Raider)
M=Medium	S=Special		41 FWD=4-Dr Sedan (Colt & Eagle Vista)	45 FWD=4-Dr Station Wagon (Colt)
				45 FWD-4WD=Station Wagon (Vista)

AR=Use as Required

=New Part Number

- =Non Illustrated Part

Printed in U.S.A.

FEBRUARY, 1989

1987-88 IMPORT PARTS CATALOG

Figure ITB-400
Illus. Page ITB-13

INTERIOR TRIM CONQUEST

ITEM	PART NUMBER	QTY	BODY	MODEL	DESCRIPTION
------	-------------	-----	------	-------	-------------

PANEL QUARTER TRIM 24 RWD - CONQUEST

					(Use Up To 3-88)
	MB56 5650	2			Black
	MB56 5651	2			Red
					(Use After 3-88)
	MB61 9488	2			Black
	MB61 9489	2			Red
21	MF45 3091	2			SCREW, (5X12)

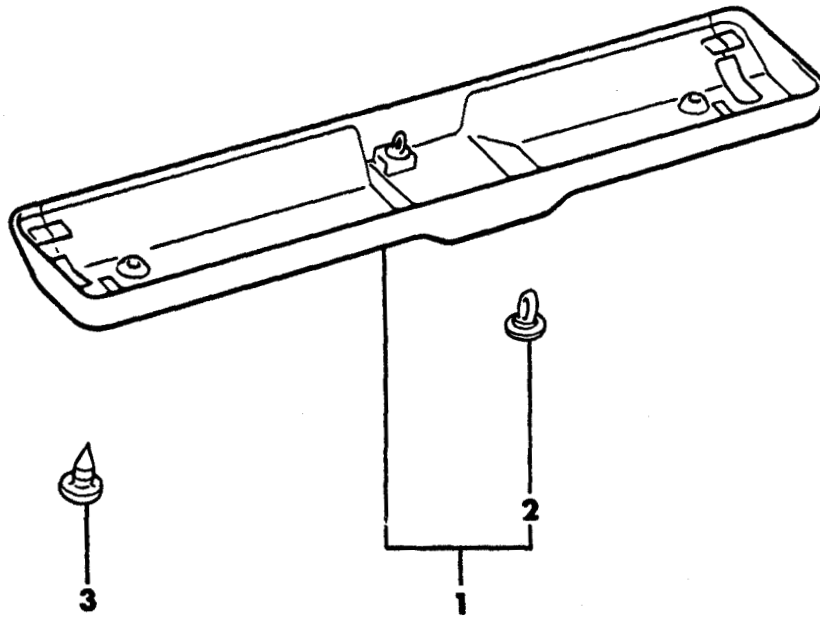
ENGINE:	Q=1500 cc	A=2000 cc	TRANS:	A=Automatic	4=4-Speed Manual
Blank=All	K=1600 cc (w/o Balance Shaft)	F=2600 cc (Car)	Blank=All	M=All Manual	5=5-Speed Manual
	W=2600 cc (Truck)				8=4 x 2 Manual

SERIES:	H=High	MODELS:	24 FWD=2-Dr Hatchback (Colt)	27 RWD-4WD=Pickup (Ram 50, Power Ram 50)
L=Low	P=Premium		24 RWD=2-Dr Hatchback (Conquest)	27 4WD=Sport Utility (Raider)
M=Medium	S=Special		41 FWD=4-Dr Sedan (Colt & Eagle Vista)	45 FWD=4-Dr Station Wagon (Colt)
				45 FWD-4WD=Station Wagon (Vista)

AR=Use as Required # =New Part Number -- =Non Illustrated Part Printed in U.S.A. FEBRUARY, 1989

7732 500 A

LIFT GATE
24 RWD - CONQUEST



1987-88 IMPORT PARTS CATALOG

Figure ITB-500
Illus. Page ITB-15

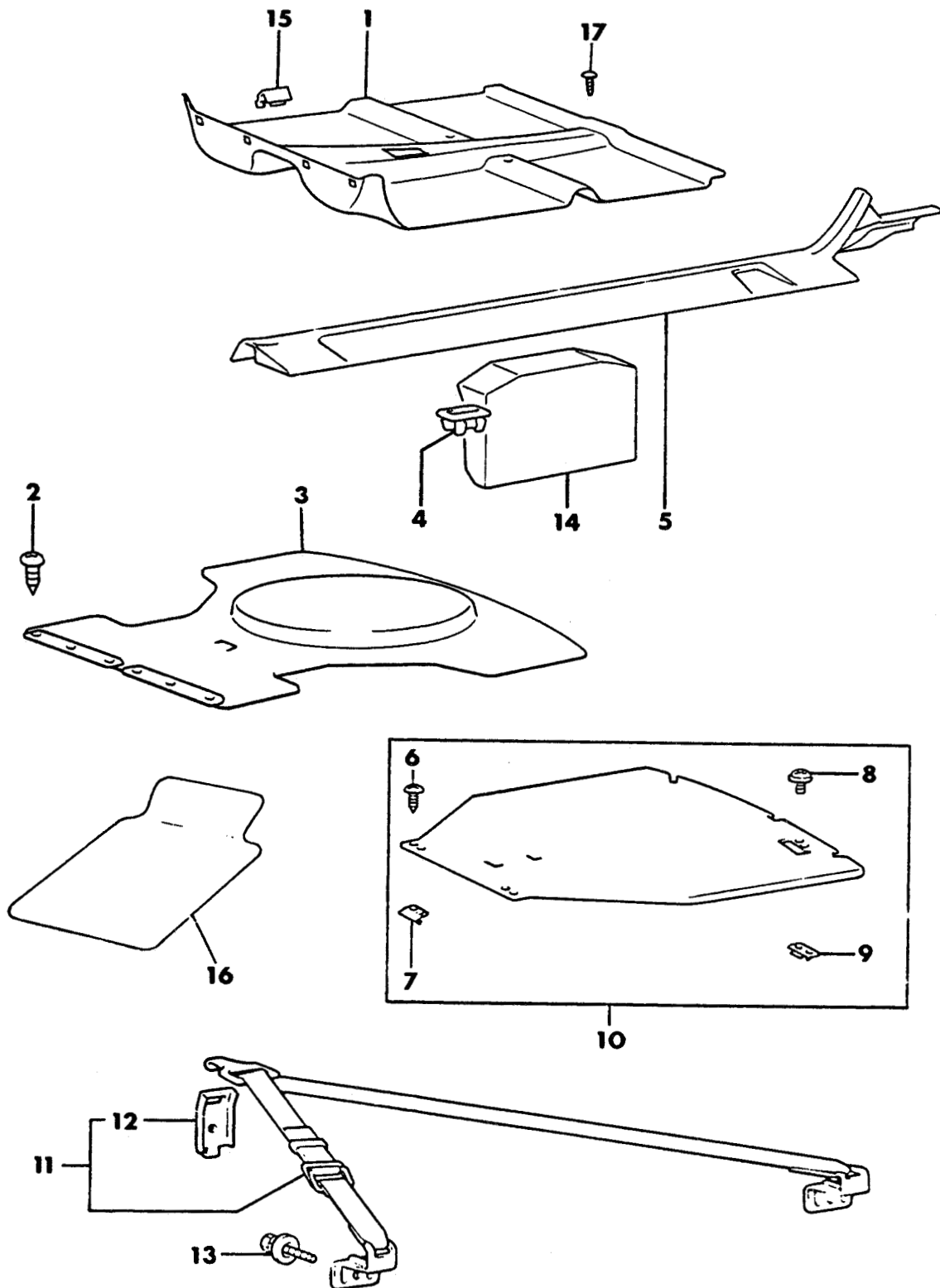
INTERIOR TRIM CONQUEST

ITEM	PART NUMBER	QTY	BODY	MODEL	DESCRIPTION
------	-------------	-----	------	-------	-------------

LIFT GATE 24 RWD - CONQUEST

1					PANEL, Liftgate Trim w/Clip
	MB20 4380	1			Red
	MB44 4663	1			Black
2	MB13 2135	AR			CLIP
3	MF45 3090	4			SCREW, Tapping (5x10)

ENGINE:		Q=1500 cc	A=2000 cc	TRANS:	A=Automatic	4=4-Speed Manual
Blank=All		K=1600 cc (w/o Balance Shaft)	F=2600 cc (Car)	Blank=All	M=All Manual	5=5-Speed Manual
		W=2600 cc (Truck)				8=4 x 2 Manual
SERIES:	H=High	MODELS: 24 FWD=2-Dr Hatchback (Colt)		27 RWD-4WD=Pickup (Ram 50, Power Ram 50)		
L=Low	P=Premium	24 RWD=2-Dr Hatchback (Conquest)		27 4WD=Sport Utility (Raider) 45 FWD=4-Dr Station Wagon (Colt)		
M=Medium	S=Special	41 FWD=4-Dr Sedan (Colt & Eagle Vista)		45 FWD-4WD=Station Wagon (Vista)		
AR=Use as Required		# =New Part Number	-- =Non Illustrated Part		Printed in U.S.A.	FEBRUARY, 1989

CARPETS, MATS AND SCUFF PLATE
24 RWD - CONQUEST**7732 600B**

1987-88 IMPORT PARTS CATALOG

Figure ITB-600
Illus. Page ITB-17

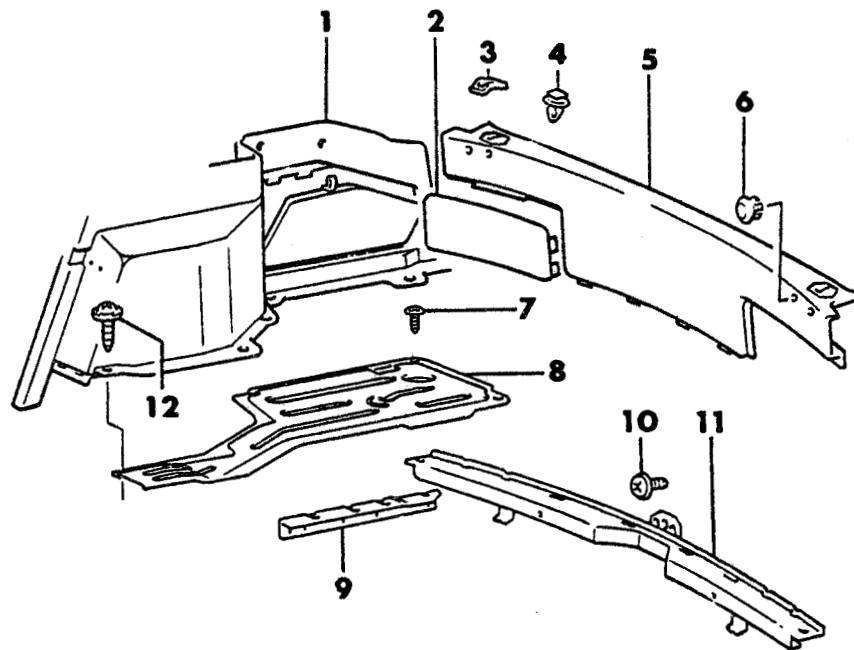
INTERIOR TRIM CONQUEST

ITEM	PART NUMBER	QTY	BODY	MODEL	DESCRIPTION
CARPETS, MATS AND SCUFF PLATE 24 RWD - CONQUEST					
1					CARPET, Floor
	#MB70 8436	1			Red (m/Trans)
	#MB70 8435	1			Black (m/Trans)
	MB71 7697	1			Beige (m/Trans)
	#MB70 8437	1			Black (a/Trans)
	#MB70 8438	1			Red (a/Trans)
	MB71 7698	1			Beige (a/Trans)
2					SCREW, Tapping
	MF45 4048	6			(5x20) (Use Up To 5-88)
	MF45 4049	6			(5x25) (Use After 5-88)
3					CARPET, Trunk
	#MB49 5516	1			Black
	#MB49 5517	1			Red
4	MB18 9627	8			CLIP, Sill Scuff Plate
5					SCUFF PLATE
					LEFT
	#MB70 7842	1			Red
	#MB70 7841	1			Black
	MB71 7825	1			Beige
					RIGHT
	#MB70 7845	1			Red
	#MB70 7844	1			Black
	MB71 7826	1			Beige
6	MS45 0156	4			SCREW, Tapping (5x12)
7	MB18 9609	2			BRACKET, Hinge Trunk Floor
8	MS20 0321	2			SCREW, Machine (5x16)
9	MB02 8356	1			CATCH, Trunk Floor
10	MB18 9367	1			BOARD, Trunk Floor
11					STRAP, Parcel
	MB20 4418	1			Red
	#MB46 8094	1			Black
12	MB28 9550	1			ANCHOR, Parcel Strap
13	MS24 0121	3			BOLT, w/Washer (6x26)
14	MB40 4272	1			SPACER, Carpet
15	MB56 6751	8			CLIP, Carpet
16					CARPETED FLOOR MATS, Set of Two
	#4308 912	1			Gray
	#4308 915	1			Red
17	MB18 9333	1			CLIP, Trim (Black)

ENGINE:		Q=1500 cc	A=2000 cc	TRANS:	A=Automatic	4=4-Speed Manual
Blank=All		K=1600 cc (w/o Balance Shaft)	F=2600 cc (Car)	Blank=All	M=All Manual	5=5-Speed Manual
		W=2600 cc (Truck)				8=4 x 2 Manual
SERIES:		H=High	MODELS: 24 FWD=2-Dr Hatchback (Colt) 27 RWD-4WD=Pickup (Ram 50, Power Ram 50)			
L=Low		P=Premium	24 RWD=2-Dr Hatchback (Conquest) 27 4WD=Sport Utility (Raider) 45 FWD=4-Dr Station Wagon (Colt)			
M=Medium		S=Special	41 FWD=4-Dr Sedan (Colt & Eagle Vista) 45 FWD-4WD=Station Wagon (Vista)			
AR=Use as Required		#=New Part Number	--=Non Illustrated Part		Printed in U.S.A.	FEBRUARY, 1989

TRUNK TRIM
 24 RWD - CONQUEST

7732 700



1987-88 IMPORT PARTS CATALOG

Figure ITB-700
Illus. Page ITB-19

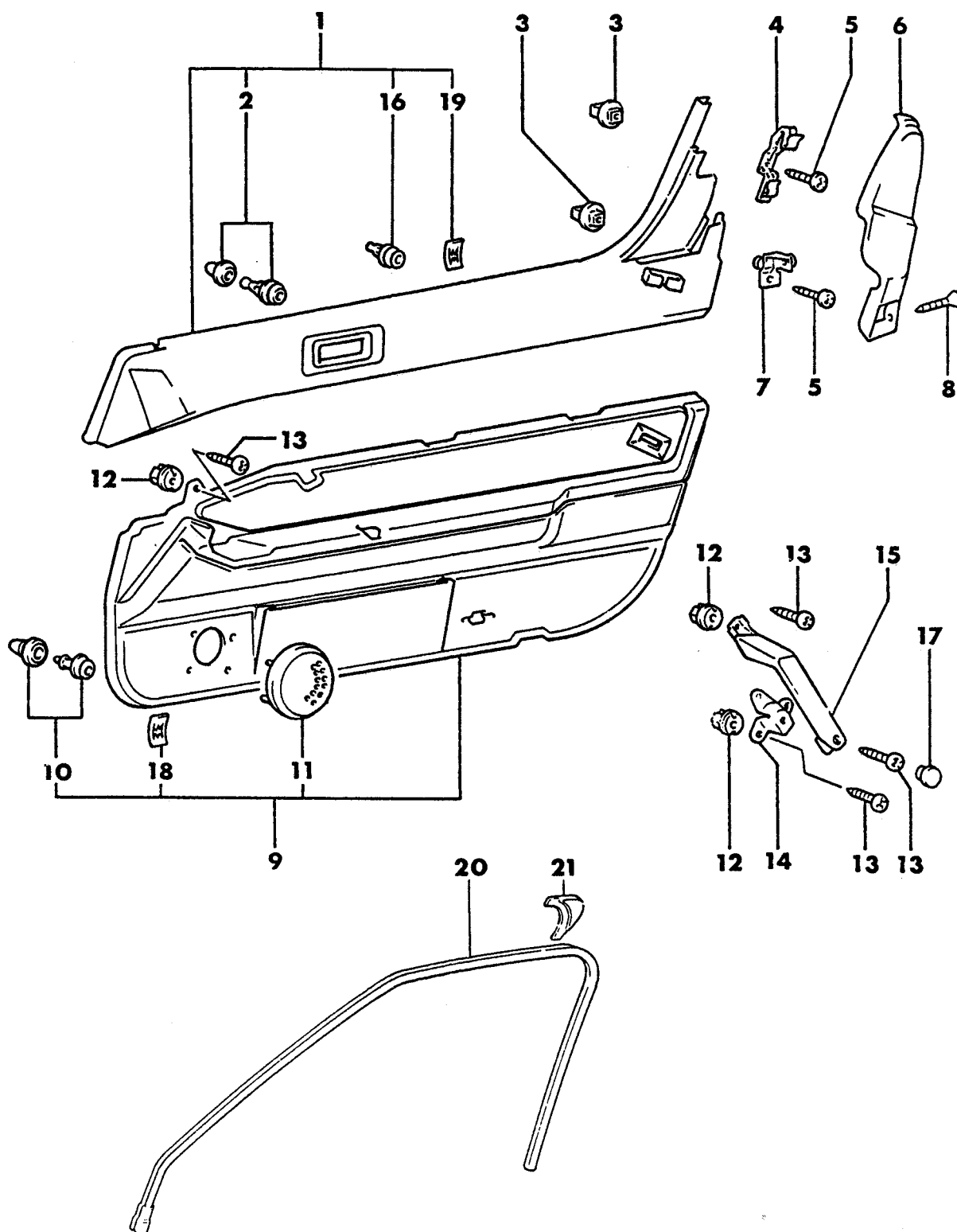
INTERIOR TRIM CONQUEST

ITEM	PART NUMBER	QTY	BODY	MODEL	DESCRIPTION
TRUNK TRIM 24 RWD - CONQUEST					
1					PANEL, Trunk Trim Side
					LEFT
	#MB49 5490	1			Black
	#MB49 5491	1			Red
					RIGHT
	#MB49 5492	1			Black
	#MB49 5493	1			Red
2					COVER, Tail Lamp Access
					LEFT
	#MB49 5498	1			Black
	#MB49 5499	1			Red
					RIGHT
	#MB49 5500	1			Black
	#MB49 5501	1			Red
3	MB38 3787	AR			COVER
4	MB10 6585	AR			CLIP
5					PANEL, Liftgate Opening Lower
	#MB49 5494	1			Black
	#MB49 5495	1			Red
6					CAP
	#MB46 8089	AR			Black
	#MB39 6670	AR			Red
7	MS45 0176	AR			SCREW, Tapping (5x12)
8					PANEL, Trunk Floor Support
	MB18 9365	1			Left
	MB18 9366	1			Right
9					SUPPORT, Trunk Floor Panel
	MB18 9363	1			Left
	MB18 9364	1			Right
10	MS24 0041	1			BOLT, w/Washer (6x16)
11	MB18 9339	1			SUPPORT, Trunk Floor Rear
12	MS45 0177	2			SCREW, Tapping (5x16)

ENGINE:		Q=1500 cc	A=2000 cc	TRANS:	A=Automatic	4=4-Speed Manual
Blank=All		K=1600 cc (w/o Balance Shaft)	F=2600 cc (Car)	Blank=All	M=All Manual	5=5-Speed Manual
		W=2600 cc (Truck)				8=4 x 2 Manual
SERIES:		H=High	MODELS: 24 FWD=2-Dr Hatchback (Colt) 27 RWD-4WD=Pickup (Ram 50, Power Ram 50)			
L=Low		P=Premium	24 RWD=2-Dr Hatchback (Conquest) 27 4WD=Sport Utility (Raider) 45 FWD=4-Dr Station Wagon (Colt)			
M=Medium		S=Special	41 FWD=4-Dr Sedan (Colt & Eagle Vista) 45 FWD-4WD=Station Wagon (Vista)			
AR=Use as Required		# = New Part Number	-- = Non Illustrated Part		Printed in U.S.A.	FEBRUARY, 1989

DOOR TRIM PANEL AND ARMREST
24 RWD - CONQUEST

7732 800



1987-88 IMPORT PARTS CATALOG

Figure ITB-800
Illus. Page ITB-21

INTERIOR TRIM CONQUEST

ITEM	PART NUMBER	QTY	BODY	MODEL	DESCRIPTION
DOOR TRIM PANEL AND ARMREST 24 RWD - CONQUEST					
1					PANEL, Door Trim Upper
					LEFT
	#MB31 9114	1			Red
	#MB70 8467	1			Black
					RIGHT
	#MB31 9116	1			Red
	#MB70 8468	1			Black
2	MB22 3933	16			CLIP, Upper Trim Panel
3	MB13 2008	4			GROMMET
4					BRACKET, Upper Trim
	#MB47 7807	1			Left
	#MB47 7808	1			Right
5	MB18 9330	6			SCREW, Tapping (4x10)
6					PANEL, Door Trim Upper Rear
					LEFT
	#MB47 8638	1			Red
	#MB47 8637	1			Black
					RIGHT
	#MB47 8641	1			Red
	#MB47 8640	1			Black
7					BRACKET, Upper Rear Panel
	MB18 9489	1			Left
	MB18 9490	1			Right
8	MF20 5744	4			SCREW, Machine Cone Point (5x16)
9					PANEL, Door Trim Lower
					1987
					w/o Leather
					LEFT
	#MB71 1139	1			Black
	#MB71 1137	1			Red
					RIGHT
	#MB71 1143	1			Black
	#MB71 1141	1			Red
					1988
					w/o Leather
					LEFT
	MB71 7781	1			Red
	MB71 7783	1			Black
	MB71 7786	1			Beige
					RIGHT
	MB71 7787	1			Red
	MB71 7789	1			Black
	MB71 7792	1			Beige
					1987
					w/Leather
					LEFT
	#MB71 1138	1			Black
	#MB71 1136	1			Red
					RIGHT
	#MB71 1142	1			Black
	#MB71 1140	1			Red

ENGINE:		Q=1500 cc	A=2000 cc	TRANS:	A=Automatic	4=4-Speed Manual
Blank=All		K=1600 cc (w/o Balance Shaft)	F=2600 cc (Car)	Blank=All	M=All Manual	5=5-Speed Manual
		W=2600 cc (Truck)				8=4 x 2 Manual
SERIES:		H=High	MODELS:		24 FWD=2-Dr Hatchback (Colt)	27 RWD-4WD=Pickup (Ram 50, Power Ram 50)
L=Low		P=Premium			24 RWD=2-Dr Hatchback (Conquest)	27 4WD=Sport Utility (Raider)
M=Medium		S=Special			41 FWD=4-Dr Sedan (Colt & Eagle Vista)	45 FWD=4-Dr Station Wagon (Colt)
						45 FWD-4WD=Station Wagon (Vista)
AR=Use as Required		# = New Part Number	- = Non Illustrated Part		Printed in U.S.A.	FEBRUARY, 1989

1987-88 IMPORT PARTS CATALOG

Figure ITB-800
Illus. Page ITB-22

INTERIOR TRIM CONQUEST

ITEM	PART NUMBER	QTY	BODY	MODEL	DESCRIPTION
DOOR TRIM PANEL AND ARMREST 24 RWD - CONQUEST					
					1988
					w/Leather
					LEFT
	MB71 1136	1			Red
	MB71 1138	1			Black
	MB71 7785	1			Beige
					RIGHT
	MB71 1140	1			Red
	MB71 1142	1			Black
	MB71 7791	1			Beige
10	MB18 9910	18			CLIP, Trim Panel
11					GRILLE, Radio Speaker
					1987
	MB24 9439	2			Red
	MB48 7605	2			Black
					1988
	MB51 0831	2			Red
	MB51 0830	2			Black
	MB71 7837	2			Beige
12	MB22 3246	8			GROMMET, Screw (6)
13	MF45 3047	10			SCREW, Tapping (6x16)
14	MB39 6688	2			BRACKET, Armrest
15					GRIP, Door
					LEFT
	MB45 8716	1			Red
	#MB46 8087	1			Black
	MB71 7768	1			Beige
					RIGHT
	MB45 8719	1			Red
	#MB46 8088	1			Black
	MB71 7769	1			Beige
16	MB37 4270	12			CLIP
17					CAP
	MB49 8626	2			Black
	MB49 8628	2			Red
	MB71 7770	2			Beige
18	MF44 5802	8			NUT, Push-on Spring (3)
19	MB26 3040	2			NUT, Push-on Spring (5)
20					MOULDING, Garnish Opening
					1987
					LEFT
	#MB70 7835	1			Black
	#MB70 7836	1			Red
					RIGHT
	#MB70 7838	1			Black
	#MB70 7839	1			Red
					1988
					LEFT
	MB56 6715	1			Red
	MB56 6713	1			Black
					RIGHT

ENGINE:		Q=1500 cc	A=2000 cc	TRANS:	A=Automatic	4=4-Speed Manual
Blank=All		K=1600 cc (w/o Balance Shaft)	F=2600 cc (Car)	Blank=All	M=All Manual	5=5-Speed Manual
		W=2600 cc (Truck)				8=4 x 2 Manual
SERIES:	H=High	MODELS: 24 FWD=2-Dr Hatchback (Colt)		27 RWD-4WD=Pickup (Ram 50, Power Ram 50)		
L=Low	P=Premium	24 RWD=2-Dr Hatchback (Conquest)		27 4WD=Sport Utility (Raider)	45 FWD=4-Dr Station Wagon (Colt)	
M=Medium	S=Special	41 FWD=4-Dr Sedan (Colt & Eagle Vista)			45 FWD-4WD=Station Wagon (Vista)	
AR=Use as Required		# =New Part Number	-- =Non Illustrated Part	Printed in U.S.A.		FEBRUARY, 1989

1987-88 IMPORT PARTS CATALOG

Figure ITB-800
Illus. Page ITB-23

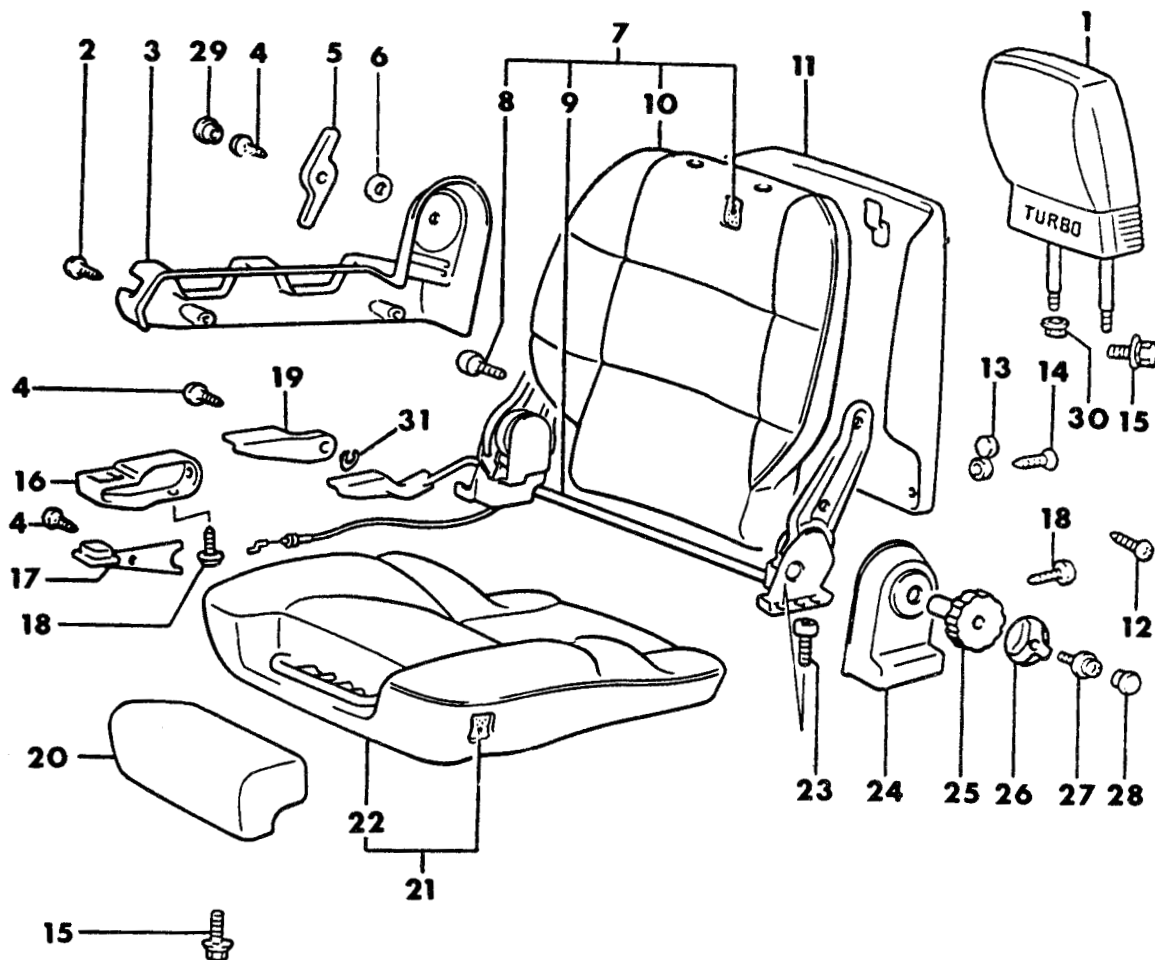
INTERIOR TRIM CONQUEST

ITEM	PART NUMBER	QTY	BODY	MODEL	DESCRIPTION
------	-------------	-----	------	-------	-------------

DOOR TRIM PANEL AND ARMREST 24 RWD - CONQUEST

21	MB56 6716	1			Red
	MB56 6714	1			Black
					MOULDING, Corner Garnish
	MB55 0645	1			Left
	MB55 0646	1			Right

ENGINE:		Q=1500 cc	A=2000 cc	TRANS:	A=Automatic	4=4-Speed Manual
Blank=All		K=1600 cc (w/o Balance Shaft)	F=2600 cc (Car)	Blank=All	M=All Manual	5=5-Speed Manual
		W=2600 cc (Truck)				8=4 x 2 Manual
SERIES:	H=High	MODELS: 24 FWD=2-Dr Hatchback (Colt)		27 RWD-4WD=Pickup (Ram 50, Power Ram 50)		
L=Low	P=Premium	24 RWD=2-Dr Hatchback (Conquest)		27 4WD=Sport Utility (Raider)	45 FWD=4-Dr Station Wagon (Colt)	
M=Medium	S=Special	41 FWD=4-Dr Sedan (Colt & Eagle Vista)			45 FWD-4WD=Station Wagon (Vista)	
AR=Use as Required		# = New Part Number	- = Non Illustrated Part		Printed in U.S.A.	FEBRUARY, 1989

SEAT FRONT - HIGH BACK BUCKET - RIGHT
24 RWD - CONQUEST-1987**7732 900 A**

1987-88 IMPORT PARTS CATALOG

Figure ITB-900
Illus. Page ITB-25

INTERIOR TRIM CONQUEST

ITEM	PART NUMBER	QTY	BODY	MODEL	DESCRIPTION
SEAT FRONT - HIGH BACK BUCKET - RIGHT					
24 RWD - CONQUEST-1987					
1					HEADREST
					w/o Leather Seat
	# MB49 5651	1			Black
	# MB49 5652	1			Red
					w/Leather Seat
	# MB70 8219	1			Black
	# MB70 8218	1			Red
2	MF45 3332	2			SCREW, Tapping (5x14)
3					SHIELD, Cushion Outer
	# MB46 8629	1			Black
	MB20 4559	1			Red
4	MF35 0047	1			SCREW, Machine (5x10)
5					LEVER, Seat Back Release
	# MB22 6131	1			Black
	MB34 2313	1			Red
6	MF45 0193	1			WASHER, Plain (6)
7					BACK ASSEMBLY
					w/o Leather Seat
	# MB49 5625	1			Black
	# MB49 5626	1			Red
					w/Leather Seat
	# MB49 5633	1			Black
	# MB49 5634	1			Red
8	MB14 4649	2			BOLT, Recliner (10x21)
9					RECLINER
	# MB19 1327	1			Black
	MB34 2312	1			Red
10					COVER, Seat Back
					w/o Leather Seat
	# MB49 5815	1			Black
	# MB49 5816	1			Red
					w/Leather Seat
	# MB49 5818	1			Black
	# MB49 5817	1			Red
11					PANEL, Front Seat Back
					w/o Leather Seat
	# MB49 5666	1			Black
	# MB49 5667	1			Red
		1			w/Leather Seat
	# MB46 8630	1			Black
	MB21 0823	1			Red
12	MF20 0073	1			SCREW, Machine (6x8)
13					CAP, Screw
	MB22 5969	1			Black
	MB29 9314	1			Red
14	MF45 3737	2			SCREW, Tapping (4x25)
15	MS24 0021	6			BOLT, w/Washer (6x16)
16					COVER, Thigh Support
	# MB19 1340	1			Black
	MB44 2436	1			Red
17					LEVER, Thigh Support

ENGINE:	Q=1500 cc	A=2000 cc	TRANS:	A=Automatic	4=4-Speed Manual
Blank=All	K=1600 cc (w/o Balance Shaft)	F=2600 cc (Car)	Blank=All	M=All Manual	5=5-Speed Manual
	W=2600 cc (Truck)				8=4 x 2 Manual
SERIES:	H=High	MODELS: 24 FWD=2-Dr Hatchback (Colt)	27 RWD-4WD=Pickup (Ram 50, Power Ram 50)		
L=Low	P=Premium	24 RWD=2-Dr Hatchback (Conquest)	27 4WD=Sport Utility (Raider)	45 FWD=4-Dr Station Wagon (Colt)	
M=Medium	S=Special	41 FWD=4-Dr Sedan (Colt & Eagle Vista)		45 FWD-4WD=Station Wagon (Vista)	
AR=Use as Required	# =New Part Number	- =Non Illustrated Part	Printed in U.S.A.	FEBRUARY, 1989	

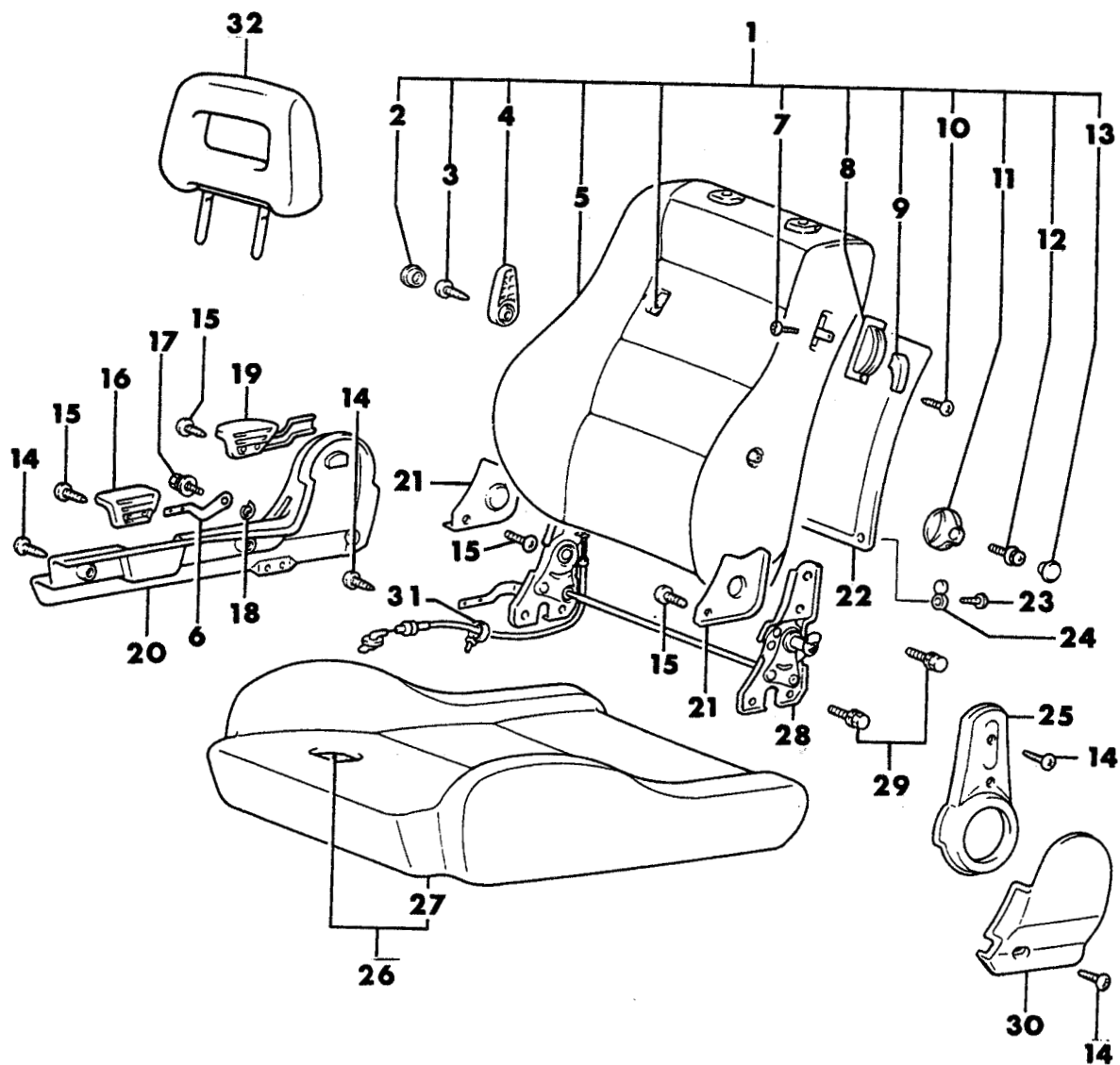
1987-88 IMPORT PARTS CATALOG

Figure ITB-900
Illus. Page ITB-26

INTERIOR TRIM CONQUEST

ITEM	PART NUMBER	QTY	BODY	MODEL	DESCRIPTION
SEAT FRONT - HIGH BACK BUCKET - RIGHT					
24 RWD - CONQUEST-1987					
18	#MB29 9151	1			Black
	MB44 2442	1			Red
	MF35 0287	2			SCREW, w/Washer (5x10)
19					LEVER, Adjuster
20	MB26 7308	1			Black
	MB44 2430	1			Red
					SUPPORT, Thigh
					w/o Leather Seat
	#MB70 8257	1			Black
	#MB70 8258	1			Red
					w/Leather Seat
	#MB70 8261	1			Black
	#MB70 8260	1			Red
21					CUSHION, w/Cover
					w/o Leather Seat
	#MB70 8271	1			Black
	#MB70 8272	1			Red
					w/Leather Seat
	#MB70 8277	1			Black
	#MB70 8276	1			Red
22					COVER, Cushion
					w/o Leather Seat
	#MB70 8281	1			Black
	#MB70 8282	1			Red
					w/Leather Seat
	#MB70 8287	1			Black
	#MB70 8286	1			Red
23	MB14 4649	1			BOLT, Recliner (10x21)
24					COVER, Recliner Inner
	#MB46 8627	1			Black
	MB20 4555	1			Red
					KNOB, Lumbar Adjuster
25	#MB19 1334	1			Black
	MB44 2402	1			Red
					KNOB, Extension Adjuster
	#MB19 1341	1			Black
	MB44 2399	1			Red
	MF35 0745	1			SCREW, w/Washer (4x12)
27					CAP
	#MB46 9834	1			Black
	MB44 2405	1			Red
					CAP
29	#MB46 9834	1			Black
	MB44 2405	1			Red
	MF43 4104	4			NUT, Flange (8)
31	MF52 2407	2			SNAP RING

ENGINE:		Q=1500 cc	A=2000 cc	TRANS:	A=Automatic	4=4-Speed Manual
Blank=All		K=1600 cc (w/o Balance Shaft)	F=2600 cc (Car)	Blank=All	M=All Manual	5=5-Speed Manual
		W=2600 cc (Truck)				8=4 x 2 Manual
SERIES:		H=High	MODELS:		24 FWD=2-Dr Hatchback (Colt)	27 RWD-4WD=Pickup (Ram 50, Power Ram 50)
L=Low		P=Premium			24 RWD=2-Dr Hatchback (Conquest)	27 4WD=Sport Utility (Raider)
M=Medium		S=Special			41 FWD=4-Dr Sedan (Colt & Eagle Vista)	45 FWD=4-Dr Station Wagon (Colt)
						45 FWD-4WD=Station Wagon (Vista)
AR=Use as Required		#=New Part Number	--=Non Illustrated Part		Printed in U.S.A.	FEBRUARY, 1989

7732 950SEAT FRONT - HIGH BACK BUCKET - RIGHT
24 RWD - CONQUEST-1988

1987-88 IMPORT PARTS CATALOG

Figure ITB-950
Illus. Page ITB-29

INTERIOR TRIM CONQUEST

ITEM	PART NUMBER	QTY	BODY	MODEL	DESCRIPTION
SEAT FRONT - HIGH BACK BUCKET - RIGHT 24 RWD - CONQUEST-1988					
1					BACK ASSEMBLY
					w/o Leather Seat
	MB72 0494	1			Red
	MB72 0493	1			Black
	MB72 0495	1			Beige
					w/Leather Seat
					(Use Up To 10-87)
	MB72 0500	1			Red
	MB72 0499	1			Black
	MB72 0501	1			Beige
					(Use After 10-87)
	MB73 1232	1			Black
	MB73 1233	1			Beige
	MB73 1234	1			Red
2					CAP
	MB35 5298	2			Red
	MB23 7307	2			Black
	MB73 1187	2			Beige
3	MF35 0768	2			SCREW, w/Washer (5X12)
4					LEVER, Lumbar Support
	MB35 5294	2			Red
	MB35 5532	2			Black
	MB73 1188	2			Beige
5					COVER, Seat Back
					w/o Leather Seat
	MB72 0567	1			Red
	MB72 0566	1			Black
	MB72 0568	1			Beige
					w/Leather Seat
					(Use Up To 10-87)
	MB72 0572	1			Red
	MB72 0573	1			Black
	MB72 0574	1			Beige
					(Use After 10-87)
	MB73 1247	1			Red
	MB73 1248	1			Black
	MB73 1249	1			Beige
6	MB60 1016	1			LEVER, Slide Seat
7	MB29 9311	1			SCREW, (3x8)
8					MOULDING, Garinsh (Walk-In)
	MB72 0525	1			Red
	MB72 0524	1			Black
	MB72 0526	1			Beige
9					KNOB, Walk-In
	MB72 0522	1			Red
	MB72 0521	1			Black
	MB72 0523	1			Beige
10	MF45 5139	1			SCREW, (Tapping 4x16)
11					KNOB, Side Support
	MB72 0519	1			Red
	MB72 0518	1			Black

ENGINE:	Q=1500 cc	A=2000 cc	TRANS:	A=Automatic	4=4-Speed Manual
Blank=All	K=1600 cc (w/o Balance Shaft)	F=2600 cc (Car)	Blank=All	M=All Manual	5=5-Speed Manual
	W=2600 cc (Truck)				8=4 x 2 Manual
SERIES:	H=High	MODELS: 24 FWD=2-Dr Hatchback (Colt)	27 RWD-4WD=Pickup (Ram 50, Power Ram 50)		
L=Low	P=Premium	24 RWD=2-Dr Hatchback (Conquest)	27 4WD=Sport Utility (Raider)		
M=Medium	S=Special	41 FWD=4-Dr Sedan (Colt & Eagle Vista)	45 FWD=4-Dr Station Wagon (Colt)		
			45 FWD-4WD=Station Wagon (Vista)		
AR=Use as Required		# =New Part Number	-- =Non Illustrated Part		Printed in U.S.A.
					FEBRUARY, 1989

1987-88 IMPORT PARTS CATALOG

Figure ITB-950
Illus. Page ITB-30

INTERIOR TRIM CONQUEST

ITEM	PART NUMBER	QTY	BODY	MODEL	DESCRIPTION
SEAT FRONT - HIGH BACK BUCKET - RIGHT 24 RWD - CONQUEST-1988					
	MB72 0520	1			Beige
12	MF35 0745	2			SCREW, w/Washer (4x12)
13					CAP
	MB44 2405	1			Red
	MB46 9834	1			Black
	MB72 4294	1			Beige
14	MF45 5510	14			SCREW, (5X10)
15	MS20 0037	12			SCREW, (4x6)
16					KNOB, Seat Sliding
	MB72 0593	1			Red
	MB72 0592	1			Black
	MB72 0594	1			Beige
17	MF24 7201	2			BOLT, w/Washer (5X10)
18	MF52 2407	2			SNAP RING
19					KNOB, Reclining
	MB72 0611	1			Red
	MB72 0610	1			Black
	MB72 0612	1			Beige
20					SHIELD, Cushion
	MB72 0587	1			Red
	MB72 0586	1			Black
	MB72 0588	1			Beige
21					COVER, Reclining
	MB72 4311	1			Red
	MB72 4310	1			Black
	MB72 4312	1			Beige
22					PANEL, Back
					w/o Leather Seat
	MB72 0516	1			Red
	MB72 0515	1			Black
	MB72 0517	1			Beige
					w/Leather Seat
					(Use Up To 10-87)
	MB72 0511	1			Red
	MB72 0510	1			Black
	MB72 0513	1			Beige
					(Use After 10-87)
	MB72 0512	1			Black
	MB72 0514	1			Beige
	MB73 1239	1			Red
23	MF45 3737	4			SCREW, (4x25)
24					CAP, Screw
	MB29 9314	4			Red
	MB22 5969	4			Black
	MB35 5465	4			Beige
25					COVER, Reclining Upper
	MB72 0599	1			Red
	MB72 0598	1			Black
	MB72 0600	1			Beige
26					CUSHION, Seat
					w/o Leather Seat

ENGINE:		Q=1500 cc	A=2000 cc	TRANS:		A=Automatic	4=4-Speed Manual
Blank=All		K=1600 cc (w/o Balance Shaft)	F=2600 cc (Car)	Blank=All		M=All Manual	5=5-Speed Manual
		W=2600 cc (Truck)					8=4 x 2 Manual
SERIES:		H=High	MODELS:		24 FWD=2-Dr Hatchback (Colt)	27 RWD-4WD=Pickup (Ram 50, Power Ram 50)	
L=Low		P=Premium			24 RWD=2-Dr Hatchback (Conquest)	27 4WD=Sport Utility (Raider)	45 FWD=4-Dr Station Wagon (Colt)
M=Medium		S=Special			41 FWD=4-Dr Sedan (Colt & Eagle Vista)		45 FWD-4WD=Station Wagon (Vista)
AR=Use as Required		# =New Part Number	— =Non Illustrated Part		Printed in U.S.A.		FEBRUARY, 1989

1987-88 IMPORT PARTS CATALOG

Figure ITB-950
Illus. Page ITB-31

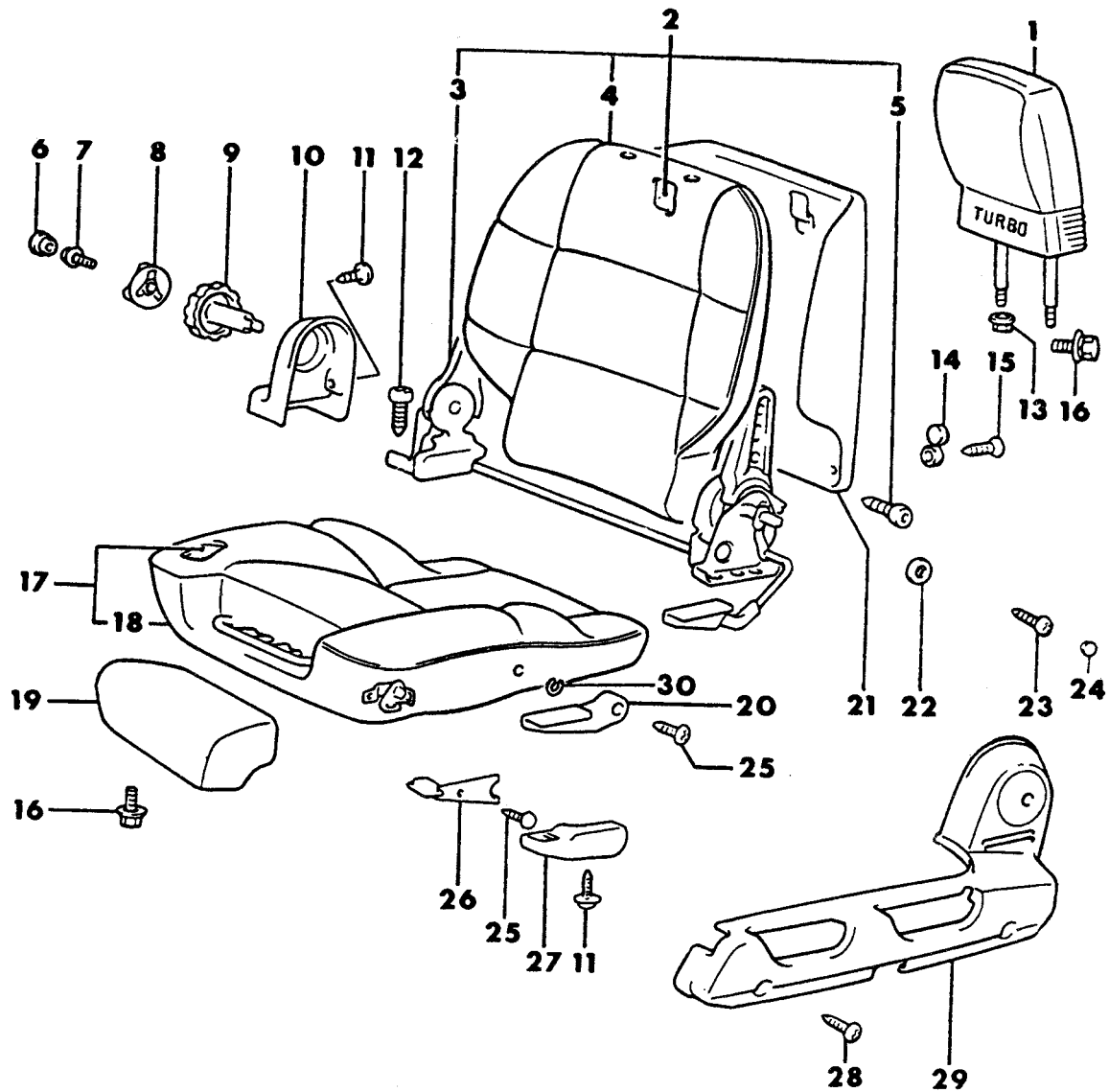
INTERIOR TRIM CONQUEST

ITEM	PART NUMBER	QTY	BODY	MODEL	DESCRIPTION
SEAT FRONT - HIGH BACK BUCKET - RIGHT					
24 RWD - CONQUEST-1988					
	MB72 0446	1			Red
	MB72 0445	1			Black
	MB72 0447	1			Beige
					w/Leather
					(use Up To 10-87)
	MB72 0451	1			Red
	MB72 0452	1			Black
	MB72 0453	1			Beige
					(Use After 10-87)
	MB73 1212	1			Red
	MB73 1213	1			Black
	MB73 1214	1			Beige
27					COVER, Front Seat
					w/o Leather
	MB72 0470	1			Red
	MB72 0469	1			Black
	MB72 0471	1			Beige
					w/Leather
					(Use Up To 10-87)
	MB72 0475	1			Red
	MB72 0476	1			Black
	MB72 0477	1			Beige
					(Use After 10-87)
	MB73 1222	1			Red
	MB73 1223	1			Black
	MB73 1224	1			Beige
28	MB55 8474	1			ADJUSTER, Reclining
29	MF24 1280	16			BOLT, w/Washer (10x20)
30					COVER, Reclining Lower
	MB72 0605	1			Red
	MB72 0604	1			Black
	MB72 0606	1			Beige
31	MB30 6583	2			BAND, Cable
32					HEADREST, Front
					w/o Leather Seat
	MB72 6171	1			Red
	MB72 6170	1			Black
	MB72 6172	1			Beige
					w/Leather Seat
	MB72 0378	1			Red
	MB72 0377	1			Black
	MB72 0379	1			Beige

ENGINE:	Q=1500 cc	A=2000 cc	TRANS:	A=Automatic	4=4-Speed Manual
Blank=All	K=1600 cc (w/o Balance Shaft)	F=2600 cc (Car)	Blank=All	M=All Manual	5=5-Speed Manual
	W=2600 cc (Truck)				8=4 x 2 Manual
SERIES:	H=High	MODELS:	24 FWD=2-Dr Hatchback (Colt)	27 RWD-4WD=Pickup (Ram 50, Power Ram 50)	
L=Low	P=Premium		24 RWD=2-Dr Hatchback (Conquest)	45 FWD=4-Dr Station Wagon (Colt)	
M=Medium	S=Special		41 FWD=4-Dr Sedan (Colt & Eagle Vista)	45 FWD-4WD=Station Wagon (Vista)	
AR=Use as Required	#=New Part Number	--=Non Illustrated Part	Printed in U.S.A.	FEBRUARY, 1989	

SEAT FRONT - HIGH BACK BUCKET - LEFT
24 RWD - CONQUEST-1987

7732 1000 A



1987-88 IMPORT PARTS CATALOG

Figure ITB-1000
Illus. Page ITB-33

INTERIOR TRIM CONQUEST

ITEM	PART NUMBER	QTY	BODY	MODEL	DESCRIPTION
SEAT FRONT - HIGH BACK BUCKET - LEFT 24 RWD - CONQUEST-1987					
1					HEADREST
	#MB49 5651	1			w/o Leather Seat
	#MB49 5652	1			Black
					Red
					w/Leather Seat
	#MB70 8219	1			Black
	#MB70 8218	1			Red
2					BACK ASSEMBLY
					w/o Leather Seat
	#MB49 5621	1			Black
	#MB49 5622	1			Red
					w/Leather Seat
	#MB49 5631	1			Black
	#MB49 5632	1			Red
3					RECLINER
	#MB19 1326	1			Black
	MB44 2422	1			Red
4					COVER, Seat Back
					w/o Leather Seat
	#MB49 5815	1			Black
	#MB49 5816	1			Red
					w/Leather Seat
	#MB49 5818	1			Black
	#MB49 5817	1			Red
5	MB14 4649	2			BOLT, (10x21)
6					CAP
	#MB46 9834	1			Black
	MB44 2405	1			Red
7	MF35 0745	1			SCREW, w/Washer (4x12)
8					KNOB, Side Support
	#MB19 1341	1			Black
	MB44 2399	1			Red
9					KNOB, Lumber Support
	#MB19 1334	1			Black
	MB44 2402	1			Red
10					COVER, Recliner
	#MB46 8626	1			Black
	MB20 4553	1			Red
11	MF35 0287	2			SCREW, w/Washer (5x10)
12	MB14 4649	2			BOLT, Recliner (10x21)
13	MF43 4104	4			NUT, Flange (8)
14					CAP, Screw Cover
	MB22 5969	2			Black
	MB29 9314	2			Red
15	MF45 3737	2			SCREW, Tapping (4x25)
16	MS24 0021	6			BOLT, w/Washer (6x16)
17					CUSHION, w/Cover
					w/o Leather Seat
	#MB70 8268	1			Black
	#MB70 8269	1			Red
					w/Leather Seat

ENGINE:	Q=1500 cc	A=2000 cc	TRANS:	A=Automatic	4=4-Speed Manual
Blank=All	K=1600 cc (w/o Balance Shaft)	F=2600 cc (Car)	Blank=All	M=All Manual	5=5-Speed Manual
	W=2600 cc (Truck)				8=4 x 2 Manual
SERIES:	H=High	MODELS:	24 FWD=2-Dr Hatchback (Colt)	27 RWD-4WD=Pickup (Ram 50, Power Ram 50)	
L=Low	P=Premium		24 RWD=2-Dr Hatchback (Conquest)	27 4WD=Sport Utility (Raider)	45 FWD=4-Dr Station Wagon (Colt)
M=Medium	S=Special		41 FWD=4-Dr Sedan (Colt & Eagle Vista)		45 FWD-4WD=Station Wagon (Vista)
AR=Use as Required # =New Part Number - =Non Illustrated Part Printed in U.S.A. FEBRUARY, 1989					

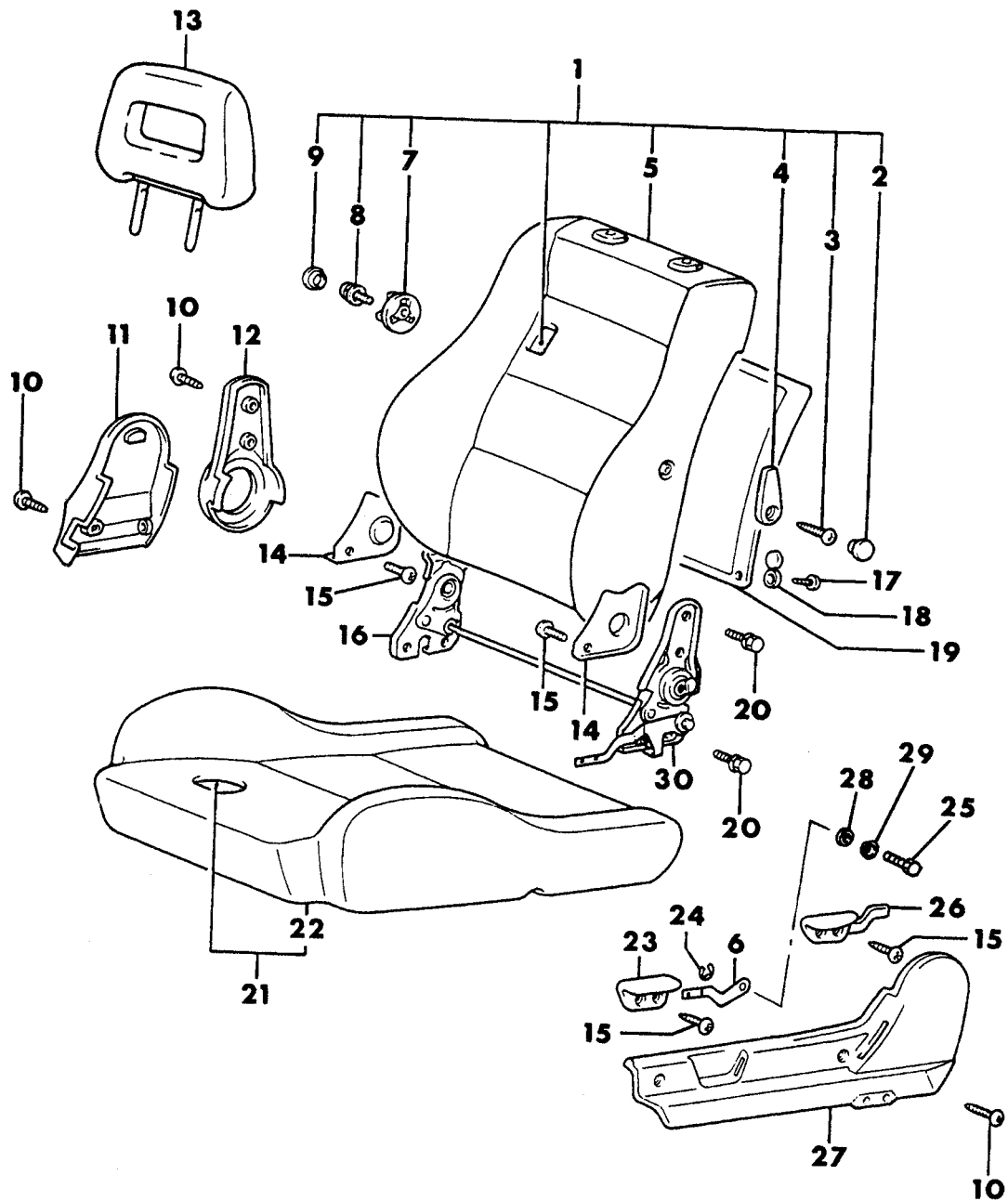
1987-88 IMPORT PARTS CATALOG

Figure ITB-1000
Illus. Page ITB-34

INTERIOR TRIM CONQUEST

ITEM	PART NUMBER	QTY	BODY	MODEL	DESCRIPTION
SEAT FRONT - HIGH BACK BUCKET - LEFT					
24 RWD - CONQUEST-1987					
18	#MB70 8275	1			Black
	#MB70 8274	1			Red
					COVER, Cushion
					w/o Leather Seat
	#MB70 8278	1			Black
19	#MB70 8279	1			Red
					w/Leather Seat
	#MB70 8285	1			Black
	#MB70 8284	1			Red
					SUPPORT, Thigh
20					w/o Leather Seat
	#MB70 8257	1			Black
	#MB70 8258	1			Red
					w/Leather Seat
	#MB70 8261	1			Black
21	#MB70 8260	1			Red
					LEVER, Seat Adjuster
	MB26 7307	AR			Black
	MB44 2427	AR			Red
					PANEL
22					w/o Leather Seat
	#MB49 5666	1			Black
	#MB49 5667	1			Red
					w/Leather Seat
	#MB46 8630	1			Black
23	MB21 0823	1			Red
	MF45 0193	1			WASHER, Plain (6)
	MF20 0073	1			SCREW, Machine (6x8)
					CAP
	#MB46 9834	1			Black
24	MB44 2405	1			Red
	MF35 0047	3			SCREW, Machine (5x10)
					LEVER, Thigh Support
	#MB29 9150	1			Black
	MB44 2439	1			Red
25					COVER, Thigh Support Lever
	#MB19 1339	1			Black
	MB44 2433	1			Red
	MF45 3332	2			SCREW, Tapping (5x14)
					SHIELD, Cushion Outer
26	#MB46 8628	1			Black
	MB20 4557	1			Red
	MF52 2407	2			SNAP RING

ENGINE:		Q=1500 cc	A=2000 cc	TRANS:	A=Automatic	4=4-Speed Manual
Blank=All		K=1600 cc (w/o Balance Shaft)	F=2600 cc (Car)	Blank=All	M=All Manual	5=5-Speed Manual
		W=2600 cc (Truck)				8=4 x 2 Manual
SERIES:	H=High	MODELS: 24 FWD=2-Dr Hatchback (Colt)		27 RWD-4WD=Pickup (Ram 50, Power Ram 50)		
L=Low	P=Premium	24 RWD=2-Dr Hatchback (Conquest)		27 4WD=Sport Utility (Raider) 45 FWD=4-Dr Station Wagon (Colt)		
M=Medium	S=Special	41 FWD=4-Dr Sedan (Colt & Eagle Vista)		45 FWD-4WD=Station Wagon (Vista)		
AR=Use as Required		# = New Part Number	- = Non Illustrated Part	Printed in U.S.A. FEBRUARY, 1989		

7732 1050 ASEAT FRONT - HIGH BACK BUCKET - LEFT
24 RWD - CONQUEST-1988

1987-88 IMPORT PARTS CATALOG

Figure ITB-1050
Illus. Page ITB-37

INTERIOR TRIM CONQUEST

ITEM	PART NUMBER	QTY	BODY	MODEL	DESCRIPTION
------	-------------	-----	------	-------	-------------

SEAT FRONT - HIGH BACK BUCKET - LEFT 24 RWD - CONQUEST-1988

1					BACK, Front Seat
					w/o Leather Seat
	MB72 0489	1			Red
	MB72 0488	1			Black
	MB72 0490	1			Beige
					w/Leather Seat
					(Use Up To 10-87)
	MB72 0497	1			Red
	MB72 0496	1			Black
	MB72 0498	1			Beige
					(Use After 10-87)
	MB73 1229	1			Black
	MB73 1230	1			Beige
	MB73 1231	1			Red
2					CAP
	MB72 0406	1			Red
	MB72 0405	1			Black
	MB72 0407	1			Beige
3	MF35 0768	1			SCREW, w/Washer (5X12)
4					LEVER, Lumbar Support
	MB72 0403	1			Red
	MB72 0402	1			Black
	MB72 0404	1			Beige
5					COVER,Back
					w/o Leather Seat
	MB72 0562	1			Red
	MB72 0561	1			Black
	MB72 0563	1			Beige
					w/Leather Seat
					(Use Up To 10-87)
	MB72 0569	1			Red
	MB72 0570	1			Black
	MB72 0571	1			Beige
					(Use After 10-87)
	MB73 1244	1			Red
	MB73 1245	1			Black
	MB73 1246	1			Beige
6	MB60 1015	1			LEVER, Seat Slide
7					KNOB, Side Support
	MB72 0519	2			Red
	MB72 0518	2			Black
	MB72 0520	2			Beige
8	MF35 0745	2			SCREW, w/Washer (4X12)
9					CAP
	MB44 2405	2			Red
	MB46 9834	2			Black
	MB72 4294	2			Beige
10	MF45 5510	14			SCREW, (5X10)
11					COVER, Reclining
	MB72 0602	1			Red
	MB72 0601	1			Black

ENGINE:	Q=1500 cc	A=2000 cc	TRANS:	A=Automatic	4=4-Speed Manual
Blank=All	K=1600 cc (w/o Balance Shaft)	F=2600 cc (Car)	Blank=All	M=All Manual	5=5-Speed Manual
	W=2600 cc (Truck)				8=4 x 2 Manual

SERIES:	H=High	MODELS:	24 FWD=2-Dr Hatchback (Colt)	27 RWD-4WD=Pickup (Ram 50, Power Ram 50)
L=Low	P=Premium		24 RWD=2-Dr Hatchback (Conquest)	27 4WD=Sport Utility (Raider)
M=Medium	S=Special		41 FWD=4-Dr Sedan (Colt & Eagle Vista)	45 FWD=4-Dr Station Wagon (Colt)
				45 FWD-4WD=Station Wagon (Vista)

AR=Use as Required # =New Part Number - =Non Illustrated Part Printed in U.S.A. FEBRUARY, 1989

1987-88 IMPORT PARTS CATALOG

Figure ITB-1050
Illus. Page ITB-38

INTERIOR TRIM CONQUEST

ITEM	PART NUMBER	QTY	BODY	MODEL	DESCRIPTION
SEAT FRONT - HIGH BACK BUCKET - LEFT 24 RWD - CONQUEST-1988					
12	MB72 0603	1			Beige
					COVER, Reclining Upper
	MB72 0596	1			Red
	MB72 0595	1			Black
13	MB72 0597	1			Beige
					HEADREST, Front
					w/o Leather Seat
	MB72 6171	1			Red
	MB72 6170	1			Black
	MB72 6172	1			Beige
					w/Leather Seat
	MB72 0378	1			Red
14	MB72 0377	1			Black
	MB72 0379	1			Beige
					COVER, Reclining Inner
	MB72 4308	2			Red
15	MB72 4307	2			Black
	MB72 4309	2			Beige
	MS20 0037	12			SCREW, (4X6)
16	MB55 8471	1			ADJUSTER, Reclining
17	MF45 3737	4			SCREW, (4x25)
18					CAP, Screw
	MB29 9314	4			Red
	MB22 5969	4			Black
	MB35 5465	4			Beige
19					PANEL, Front Back
					w/o Leather Seat
	MB72 0516	2			Red
	MB72 0515	2			Black
	MB72 0517	2			Beige
					w/Leather Seat
					(Use Up To 10-87)
	MB72 0511	2			Red
	MB72 0510	2			Black
	MB72 0513	2			Beige
					(Use After 10-87)
	MB72 0512	2			Black
	MB72 0514	2			Beige
	MB73 1239	2			Red
20	MF24 1282	16			BOLT, w/Washer (10x20)
21					CUSHION, Front Seat
					w/o Leather Seat
	MB72 0441	1			Red
	MB72 0440	1			Black
	MB72 0442	1			Beige
					w/Leather Seat
					(Use Up TO 10-87)
	MB72 0448	1			Red
	MB72 0449	1			Black
	MB72 0450	1			Beige
					(Use After 10-87)

ENGINE:		Q=1500 cc	A=2000 cc	TRANS:	A=Automatic	4=4-Speed Manual
Blank=All		K=1600 cc (w/o Balance Shaft)	F=2600 cc (Car)	Blank=All	M=All Manual	5=5-Speed Manual
		W=2600 cc (Truck)				8=4 x 2 Manual
SERIES:		H=High	MODELS:		24 FWD=2-Dr Hatchback (Colt)	27 RWD-4WD=Pickup (Ram 50, Power Ram 50)
L=Low		P=Premium			24 RWD=2-Dr Hatchback (Conquest)	27 4WD=Sport Utility (Raider)
M=Medium		S=Special			41 FWD=4-Dr Sedan (Colt & Eagle Vista)	45 FWD=4-Dr Station Wagon (Colt)
						45 FWD-4WD=Station Wagon (Vista)
AR=Use as Required		# =New Part Number	-- =Non Illustrated Part		Printed in U.S.A.	FEBRUARY, 1989

1987-88 IMPORT PARTS CATALOG

Figure ITB-1050
Illus. Page ITB-39

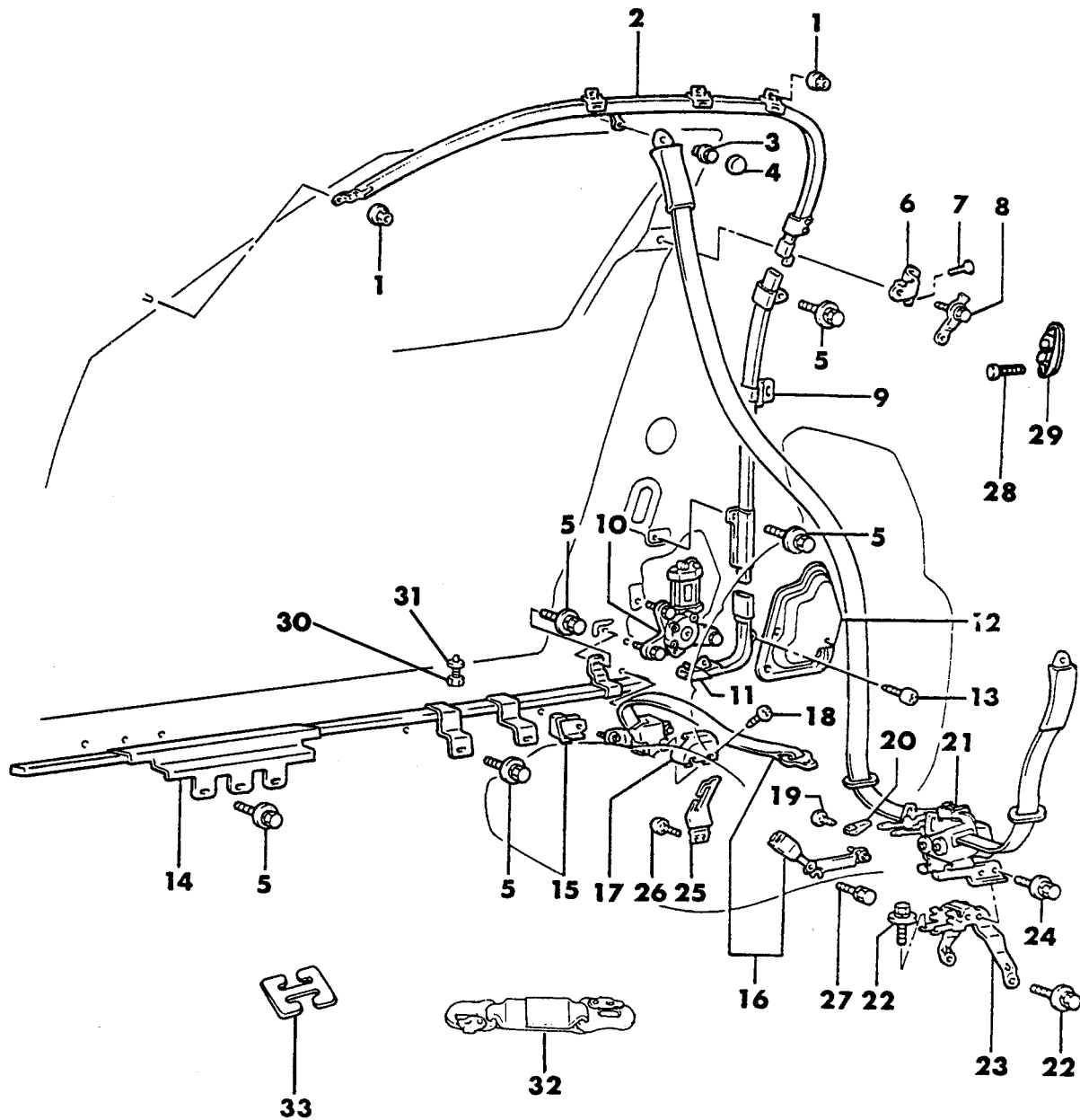
INTERIOR TRIM CONQUEST

ITEM	PART NUMBER	QTY	BODY	MODEL	DESCRIPTION
SEAT FRONT - HIGH BACK BUCKET - LEFT 24 RWD - CONQUEST-1988					
22	MB73 1209	1			Red
	MB73 1210	1			Black
	MB73 1211	1			Beige
					COVER, Front Cushion w/o Leather Seat
	MB72 0465	1			Red
	MB72 0464	1			Black
	MB72 0466	1			Beige
					w/Leather Seat (Use Up To 10-87)
	MB72 0472	1			Red
	MB72 0473	1			Black
23	MB72 0474	1			Beige
					(Use After 10-87)
	MB73 1219	1			Red
	MB73 1220	1			Black
	MB73 1221	1			Beige
					KNOB, Seat Slide
	MB72 0590	1			Red
	MB72 0589	1			Black
	MB72 0591	1			Beige
					SNAP RING
24	MF52 2407	2			
25	MF24 7201	2			BOLT, w/Washer (5x10)
26					KNOB, Reclining
27	MB72 0608	1			Red
	MB72 0607	1			Black
	MB72 0609	1			Beige
					SHIELD, Cushion
	MB72 0584	1			Red
	MB72 0583	1			Black
	MB72 0585	1			Beige
					WASHER, (Plain-5)
28	MF45 0152	2			
29	MF45 0403	2			WASHER (5)
30	MB55 8473	1			ADJUSTER, Left

ENGINE:		Q=1500 cc	A=2000 cc	TRANS:		A=Automatic	4=4-Speed Manual
Blank=All		K=1600 cc (w/o Balance Shaft)	F=2600 cc (Car)	Blank=All		M=All Manual	5=5-Speed Manual
		W=2600 cc (Truck)					8=4 x 2 Manual
SERIES:		H=High	MODELS:		24 FWD=2-Dr Hatchback (Colt)	27 RWD-4WD=Pickup (Ram 50, Power Ram 50)	
L=Low		P=Premium			24 RWD=2-Dr Hatchback (Conquest)	27 4WD=Sport Utility (Raider)	45 FWD=4-Dr Station Wagon (Colt)
M=Medium		S=Special			41 FWD=4-Dr Sedan (Colt & Eagle Vista)		45 FWD-4WD=Station Wagon (Vista)
AR=Use as Required		#=New Part Number	--=Non Illustrated Part		Printed in U.S.A.		FEBRUARY, 1989

BELTS SEAT FRONT
24 RWD - CONQUEST

7732 1100 E



1987-88 IMPORT PARTS CATALOG

Figure ITB-1100
Illus. Page ITB-41

INTERIOR TRIM CONQUEST

ITEM	PART NUMBER	QTY	BODY	MODEL	DESCRIPTION
BELTS SEAT FRONT 24 RWD - CONQUEST					
1	MS44 0502	8			NUT, w/Washer (6)
2					RAIL, Guide w/Limit Switch
	MB47 2621	1			Left
	MB47 2622	1			Right
3	MB47 2719	2			BOLT
4					CAP
	# MB70 8223	2			Black
	# MB70 8224	2			Red
5	MS24 0121	22			BOLT, w/Washer (6x16)
6					PLATE, Anchor
	MB51 9590	1			Left
	MB51 9591	1			Right
7	MF20 1812	2			SCREW, Machine (6x16)
8	MB51 9231	2			ANCHOR, Sub Assy.
9					CASING, Outer (A)
	MB47 2625	1			Left
	MB47 2626	1			Right
10					MOTOR
	MB47 2631	1			Left
	MB47 2632	1			Right
11					GUIDE, Tape
	MB47 2629	1			Left
	MB47 2630	1			Right
12					COVER, Motor
	MB51 9771	1			Left
	MB51 9772	1			Right
13	MS20 0125	4			SCREW, Machine Tapping (5x12)
14					CASING, Outer (B)
	MB47 2627	1			Left
	MB47 2628	1			Right
15					COVER, Anchor
					LEFT
	# MB70 8300	1			Black
	# MB70 8301	1			Red
	MB71 8657	1			Beige
					RIGHT
	# MB70 8303	1			Black
	# MB70 8304	1			Red
	MB71 8658	1			Beige
16					BELT, Front Seat
					1987
					LEFT
	# MB70 8226	1			Black
	# MB70 8227	1			Red
					RIGHT
	# MB70 8229	1			Black
	# MB70 8230	1			Red
					1988
					LEFT
	MB71 8675	1			Black-Gray
	MB71 8676	1			Red-Beige

ENGINE:	Q=1500 cc	A=2000 cc	TRANS:	A=Automatic	4=4-Speed Manual
Blank=All	K=1600 cc (w/o Balance Shaft)	F=2600 cc (Car)	Blank=All	M=All Manual	5=5-Speed Manual
	W=2600 cc (Truck)				8=4 x 2 Manual

SERIES:	H=High	MODELS:	24 FWD=2-Dr Hatchback (Colt)	27 RWD-4WD=Pickup (Ram 50, Power Ram 50)
L=Low	P=Premium		24 RWD=2-Dr Hatchback (Conquest)	27 4WD=Sport Utility (Raider)
M=Medium	S=Special		41 FWD=4-Dr Sedan (Colt & Eagle Vista)	45 FWD=4-Dr Station Wagon (Colt)
				45 FWD-4WD=Station Wagon (Vista)

AR=Use as Required

=New Part Number

- =Non Illustrated Part

Printed in U.S.A.

FEBRUARY, 1989

1987-88 IMPORT PARTS CATALOG

Figure ITB-1100
Illus. Page ITB-42

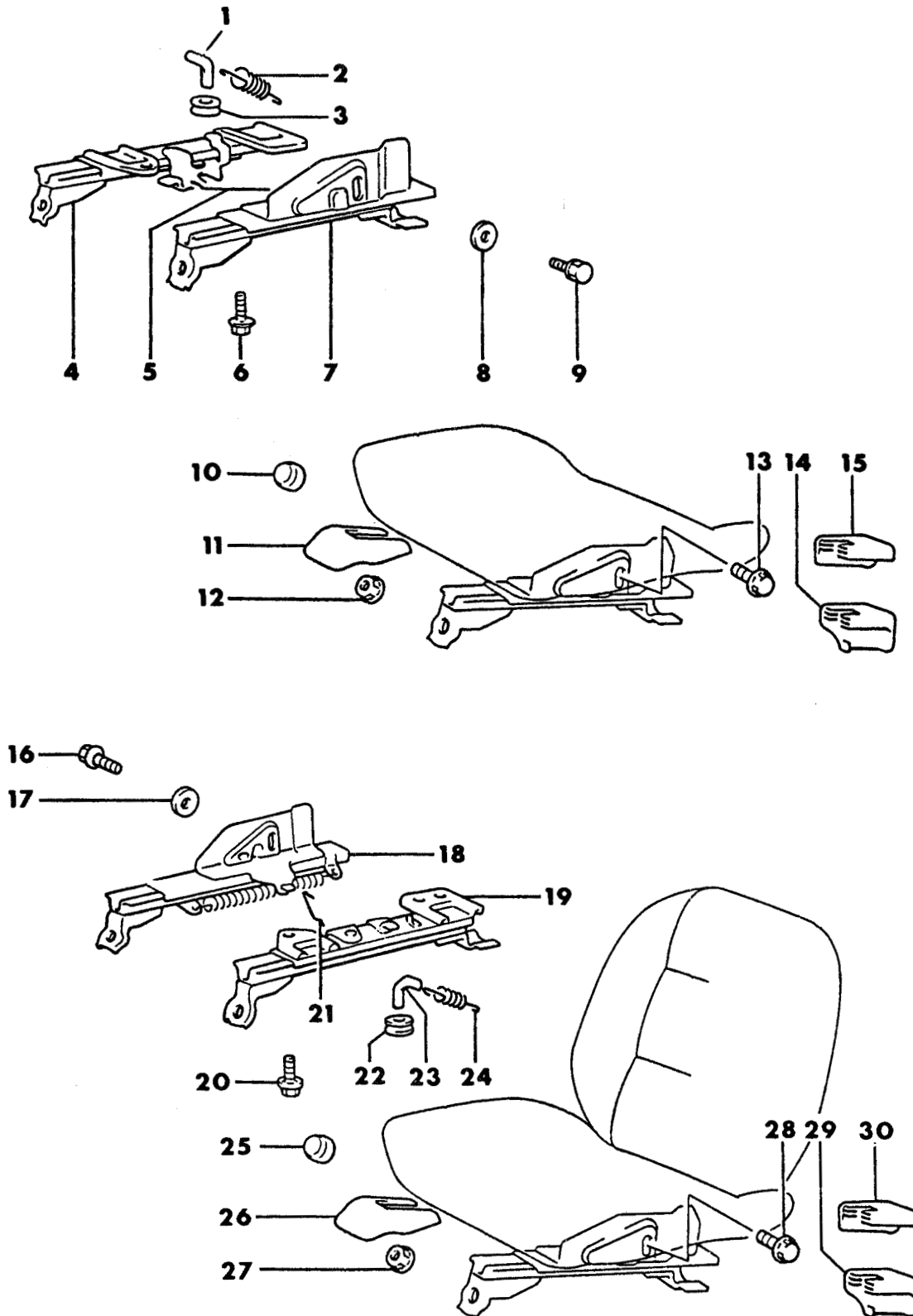
INTERIOR TRIM CONQUEST

ITEM	PART NUMBER	QTY	BODY	MODEL	DESCRIPTION
BELTS SEAT FRONT 24 RWD - CONQUEST					
RIGHT					
17	MB71 8677	1			Black-Gray
	MB71 8678	1			Red-Beige
					COVER, Emergency Locking Retractor
LEFT					
	#MB70 8294	1			Black
	#MB70 8295	1			Red
	MB71 8655	1			Beige
RIGHT					
	#MB70 8297	1			Black
	#MB70 8298	1			Red
	MB71 8656	1			Beige
18	MF45 3091	4			SCREW, Tapping (5x12)
19	MB41 0568	2			SCREW (4x6)
20	MB47 3116	2			KNOB, Spool Release Lever
21					BELT, Front Seat
	#MB70 8220	1			Black/Gray
	#MB70 8221	1			Red/Beige
22	MB17 6237	4			BOLT, w/Washer (10x30)
23	MB47 2581	1			BRACKET, Emergency Locking Retractor Mount
24	MF24 4851	4			BOLT, w/Washer (8x20)
25					GUIDE, Seat Belt
LEFT					
	#MB70 8288	1			Black
	#MB70 8289	1			Red
	MB72 0400	1			Beige
RIGHT					
	#MB70 8291	1			Black
	#MB70 8292	1			Red
	MB72 0401	1			Beige
26	MF20 0073	4			SCREW, Machine (6x8) 1987
	MF20 0334	4			SCREW, Machine (6x10) 1988
	MS24 0108	2			BOLT, w/Washer (8x20) 1987
	MS24 0114	2			Bolt, w/Washer (8x25) 1988
	MB32 3562	4			BOLT, Torx
29					CATCH, Seat Belt
	MB32 3560	1			Left
	MB32 3561	1			Right
30	MB32 3562	2			BOLT
31	MF45 0007	2			WASHER
32	MB55 7164	1			BELT, Child Seat Fastening Device (1987 Only)

ENGINE:		Q=1500 cc	A=2000 cc	TRANS:	A=Automatic	4=4-Speed Manual
Blank=All		K=1600 cc (w/o Balance Shaft)	F=2600 cc (Car)	Blank=All	M=All Manual	5=5-Speed Manual
		W=2600 cc (Truck)				8=4 x 2 Manual
SERIES:		H=High	MODELS:		24 FWD=2-Dr Hatchback (Colt)	27 RWD-4WD=Pickup (Ram 50, Power Ram 50)
L=Low		P=Premium			24 RWD=2-Dr Hatchback (Conquest)	27 4WD=Sport Utility (Raider)
M=Medium		S=Special			41 FWD=4-Dr Sedan (Colt & Eagle Vista)	45 FWD=4-Dr Station Wagon (Colt)
						45 FWD-4WD=Station Wagon (Vista)
AR=Use as Required		#=New Part Number	--=Non Illustrated Part		Printed in U.S.A.	FEBRUARY, 1989

7732 1200

ADJUSTER HIGH BACK BUCKET
24 RWD - CONQUEST



1987-88 IMPORT PARTS CATALOG

Figure ITB-1200
Illus. Page ITB-45

INTERIOR TRIM CONQUEST

ITEM	PART NUMBER	QTY	BODY	MODEL	DESCRIPTION
ADJUSTER HIGH BACK BUCKET 24 RWD - CONQUEST					
PASSENGER SEAT					
1	MB32 3811	1			ARM, Adjuster Release 1987
	MB60 1017	1			ARM, Adjuster Release 1988
2	MB26 7286	1			SPRING, Adjuster Release
3	MB07 3443	1			BUSHING
4					ADJUSTER, Outer
					1987
	#MB70 8265	1			Black
	#MB70 8266	1			Red
					1988
	MB72 0426	1			Red
	MB72 0425	1			Black
	MB72 0427	1			Beige
5	MB23 7240	1			ROD, Seat Adjuster
6	MB19 0985	4			BOLT (8x18)
7					ADJUSTER, Inner
					1987
	#MB23 7120	1			Black
	MB44 4884	1			Red
					1988
	MB72 0423	1			Red
	MB72 0422	1			Black
	MB72 0424	1			Beige
8	MB23 7251	2			WASHER
9	MB19 1203	1			BOLT (8x25)
10					CAP
	#MB34 1221	1			Black
	MB35 5285	1			Red
	MB72 0387	1			Beige
11					COVER, Adjuster Front
	MB19 0346	1			Black
	MB35 5257	1			Red
	MB72 0388	1			Beige
12	MS44 0514	2			NUT, w/Washer (10)
13	MB22 6191	2			BOLT, w/Washer
14					COVER, Rear Side Sill
					LEFT
	MB16 5415	1			Black
	MB35 5262	1			Red
	MB72 0389	1			Beige
					RIGHT
	MB16 5416	1			Black
	MB35 5265	1			Red
	MB72 0390	1			Beige
15					COVER, Rear Back Bone
					LEFT
	MB17 2343	1			Black
	MB35 5270	1			Red
	MB72 0391	1			Beige
					RIGHT
	MB17 2344	1			Black

ENGINE:	Q=1500 cc	A=2000 cc	TRANS:	A=Automatic	4=4-Speed Manual
Blank=All	K=1600 cc (w/o Balance Shaft)	F=2600 cc (Car)	Blank=All	M=All Manual	5=5-Speed Manual
	W=2600 cc (Truck)				8=4 x 2 Manual
SERIES:	H=High	MODELS:	24 FWD=2-Dr Hatchback (Colt) 27 RWD=4WD=Pickup (Ram 50, Power Ram 50)		
L=Low	P=Premium		24 RWD=2-Dr Hatchback (Conquest) 27 4WD=Sport Utility (Raider) 45 FWD=4-Dr Station Wagon (Colt)		
M=Medium	S=Special		41 FWD=4-Dr Sedan (Colt & Eagle Vista) 45 FWD=4WD=Station Wagon (Vista)		
AR=Use as Required		# = New Part Number	- = Non Illustrated Part		Printed in U.S.A.
FEBRUARY, 1989					

1987-88 IMPORT PARTS CATALOG

Figure ITB-1200
Illus. Page ITB-46

INTERIOR TRIM CONQUEST

ITEM	PART NUMBER	QTY	BODY	MODEL	DESCRIPTION
ADJUSTER HIGH BACK BUCKET 24 RWD - CONQUEST					
	MB35 5273	1			Red
	MB72 0392	1			Beige
					DRIVERS SEAT
16	MB19 1203	1			BOLT (8x25)
17	MB23 7251	1			WASHER
18					ADJUSTER, Inner
					1987
	#MB19 1323	1			Black
	MB44 4883	1			Red
					1988
	MB72 0416	1			Red
	MB72 0415	1			Black
	MB72 0417	1			Beige
19					ADJUSTER, Outer
					1987
	#MB19 1322	1			Black
	MB44 4882	1			Red
					1988
	MB72 0413	1			Red
	MB72 0412	1			Black
	MB72 0414	1			Beige
20	MB19 0985	4			BOLT (8x18)
21	MB23 7240	1			ROD, Seat Adjuster
22	MB07 3443	1			BUSHING
23	MB32 3810	1			LEVER, Seat Adjuster
24	MB26 7286	1			SPRING, Adjuster Lever
25					CAP, Adjuster Cover
	#MB34 1221	1			Black
	MB35 5285	1			Red
	MB72 0387	1			Beige
26					COVER, Adjuster Front
	MB19 0346	1			Black
	MB35 5257	1			Red
	MB72 0388	1			Beige
27	MS44 0514	2			NUT, w/Washer
28	MB22 6191	2			BOLT, w/Washer
29					COVER, Rear Side Sill
					LEFT
	MB16 5415	1			Black
	MB35 5262	1			Red
	MB72 0389	1			Beige
					RIGHT
	MB16 5416	1			Black
	MB35 5265	1			Red
	MB72 0390	1			Beige
30					COVER, Rear Back Bone
					LEFT
	MB17 2343	1			Black
	MB35 5270	1			Red
	MB27 0391	1			Beige
					RIGHT

ENGINE:	Q=1500 cc	A=2000 cc	TRANS:	A=Automatic	4=4-Speed Manual
Blank=All	K=1600 cc (w/o Balance Shaft)	F=2600 cc (Car)	Blank=All	M=All Manual	5=5-Speed Manual
	W=2600 cc (Truck)				8=4 x 2 Manual

SERIES:	H=High	MODELS:	24 FWD=2-Dr Hatchback (Colt)	27 RWD-4WD=Pickup (Ram 50, Power Ram 50)
L=Low	P=Premium		24 RWD=2-Dr Hatchback (Conquest)	27 4WD=Sport Utility (Raider)
M=Medium	S=Special		41 FWD=4-Dr Sedan (Colt & Eagle Vista)	45 FWD=4-Dr Station Wagon (Colt)
				45 FWD-4WD=Station Wagon (Vista)

AR=Use as Required

=New Part Number

- =Non Illustrated Part

Printed in U.S.A.

FEBRUARY, 1989

1987-88 IMPORT PARTS CATALOG

Figure ITB-1200
Illus. Page ITB-47

INTERIOR TRIM CONQUEST

ITEM	PART NUMBER	QTY	BODY	MODEL	DESCRIPTION
------	-------------	-----	------	-------	-------------

ADJUSTER HIGH BACK BUCKET 24 RWD - CONQUEST

MB17 2344	1	Black
MB35 5273	1	Red
MB72 0392	1	Beige

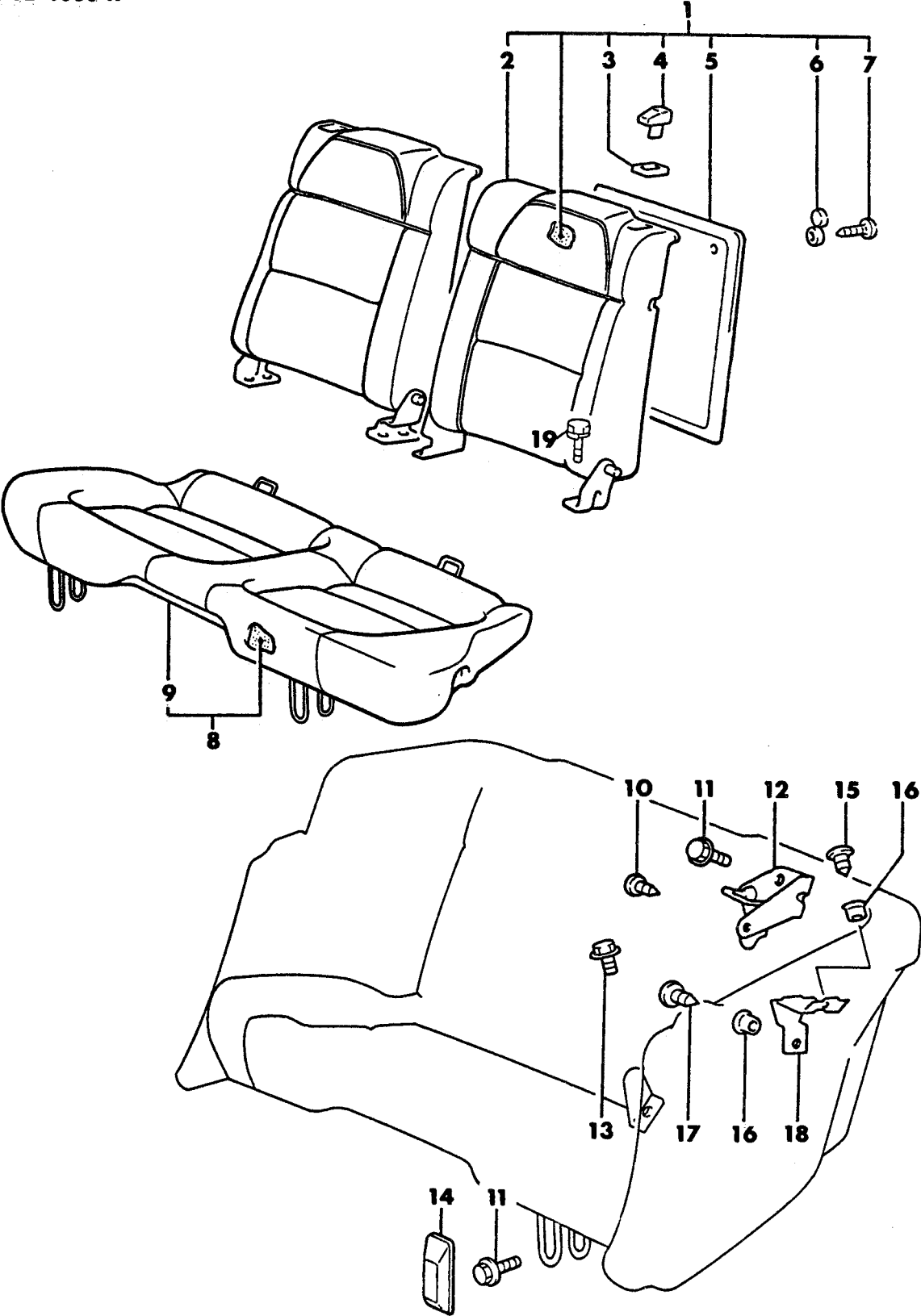
ENGINE:	Q=1500 cc	A=2000 cc	TRANS:	A=Automatic	4=4-Speed Manual
Blank=All	K=1600 cc (w/o Balance Shaft)	F=2600 cc (Car)	Blank=All	M=All Manual	5=5-Speed Manual
	W=2600 cc (Truck)				8=4 x 2 Manual

SERIES:	H=High	MODELS:	24 FWD=2-Dr Hatchback (Colt)	27 RWD-4WD=Pickup (Ram 50, Power Ram 50)
L=Low	P=Premium		24 RWD=2-Dr Hatchback (Conquest)	27 4WD=Sport Utility (Raider)
M=Medium	S=Special		41 FWD=4-Dr Sedan (Colt & Eagle Vista)	45 FWD=4-Dr Station Wagon (Colt)
				45 FWD-4WD=Station Wagon (Vista)

AR=Use as Required # = New Part Number — = Non Illustrated Part Printed in U.S.A. FEBRUARY, 1989

7732 1300 A

SEAT REAR
24 RWD - CONQUEST



1987-88 IMPORT PARTS CATALOG

Figure ITB-1300

Illus. Page ITB-49

INTERIOR TRIM CONQUEST

ITEM	PART NUMBER	QTY	BODY	MODEL	DESCRIPTION
------	-------------	-----	------	-------	-------------

SEAT REAR 24 RWD - CONQUEST

1		BACK ASSEMBLY			
		1987			
		w/o Leather Seat			
		LEFT			
	#MB49 5705	1			Black
	#MB49 5707	1			Red
		RIGHT			
	#MB49 5711	1			Red
	#MB49 5709	1			Black
		1988			
		LEFT			
	MB72 0623	1			Red
	MB72 0621	1			Black
	MB72 0622	1			Beige, (Use Up To 10-87)
	MB73 1261	1			Beige, (Use After 10-87)
		RIGHT			
	MB72 0628	1			Red
	MB72 0626	1			Black
	MB72 0627	1			Beige, (Use Up To 10-87)
	MB73 1263	1			Beige, (Use After 10-87)
		1987			
		w/Leather Seat			
		LEFT			
	#MB49 5717	1			Black
	#MB49 5718	1			Red
		RIGHT			
	#MB49 5719	1			Black
	#MB49 5720	1			Red
		1988			
		LEFT			
		(Use Up To 10-87)			
	MB72 0615	1			Red
	MB72 0613	1			Black
	MB72 0614	1			Beige
		(Use After 10-87)			
	MB73 1254	1			Black
	MB73 1255	1			Beige
	MB73 1256	1			Red
		RIGHT			
		(Use Up To 10-87)			
	MB72 0618	1			Red
	MB72 0616	1			Black
	MB72 0617	1			Beige
		(Use After 10-87)			
	MB73 1257	1			Black
	MB73 1258	1			Beige
	MB73 1259	1			Red

2

COVER, Rear Seat Back

		1987			
		w/o Leather Seat			
		LEFT			

ENGINE:		Q=1500 cc	A=2000 cc	TRANS:	A=Automatic	4=4-Speed Manual
Blank=All		K=1600 cc (w/o Balance Shaft)	F=2600 cc (Car)	Blank=All	M=All Manual	5=5-Speed Manual
		W=2600 cc (Truck)				8=4 x 2 Manual
SERIES:		H=High	MODELS:		24 FWD=2-Dr Hatchback (Colt)	
L=Low	P=Premium				24 RWD=2-Dr Hatchback (Conquest)	27 4WD=Sport Utility (Raider)
M=Medium	S=Special				41 FWD=4-Dr Sedan (Colt & Eagle Vista)	45 FWD=4-Dr Station Wagon (Colt)
						45 FWD=4WD=Station Wagon (Vista)
AR=Use as Required		# = New Part Number	-- = Non Illustrated Part		Printed in U.S.A.	FEBRUARY, 1989

1987-88 IMPORT PARTS CATALOG

Figure ITB-1300

Illus. Page ITB-50

INTERIOR TRIM CONQUEST

ITEM	PART NUMBER	QTY	BODY	MODEL	DESCRIPTION
------	-------------	-----	------	-------	-------------

SEAT REAR 24 RWD - CONQUEST

	#MB49 5862	1			Black
	#MB49 5863	1			Red
					RIGHT
	#MB49 5866	1			Black
	#MB49 5867	1			Red
					1988
					LEFT
	MB72 0657	1			Red
	MB72 0656	1			Black
	MB72 0658	1			Beige, (Use Up To 10-87)
	MB73 1281	1			Beige, (Use After 10-87)
					RIGHT
	MB72 0661	1			Black
	MB72 0662	1			Red
	MB72 0663	1			Beige, (Use Up To 10-87)
	MB73 1283	1			Beige, (Use After 10-87)
					w/Leather Seat
					1987
					LEFT
	#MB49 5868	1			Black
	#MB49 5869	1			Red
					RIGHT
	#MB49 5870	1			Black
	#MB49 5871	1			Red
					1988
					LEFT
					(Use Up To 10-87)
	MB72 0650	1			Red
	MB72 0649	1			Black
	MB72 0651	1			Beige
					(Use After 10-87)
	MB73 1274	1			Black
	MB73 1275	1			Beige
	MB73 1276	1			Red
					RIGHT
					(Use Up To 10-87)
	MB72 0653	1			Red
	MB72 0652	1			Black
	MB72 0654	1			Beige
					(Use After 10-87)
	MB73 1277	1			Black
	MB73 1278	1			Beige
	MB73 1279	1			Red
3					GUIDE, Seat Back Release
	MB27 8929	2			Black
	MB44 3339	2			Red
4					KNOB, Seat Back Release
	MB27 8928	2			Black
	MB44 3336	2			Red
5					PANEL, Rear Seat Back
					w/Leather Seat

ENGINE:	Q=1500 cc	A=2000 cc	TRANS:	A=Automatic	4=4-Speed Manual
Blank=All	K=1600 cc (w/o Balance Shaft)	F=2600 cc (Car)	Blank=All	M=All Manual	5=5-Speed Manual
	W=2600 cc (Truck)				8=4 x 2 Manual

SERIES:	H=High	MODELS:	24 FWD=2-Dr Hatchback (Colt)	27 RWD-4WD=Pickup (Ram 50, Power Ram 50)
L=Low	P=Premium		24 RWD=2-Dr Hatchback (Conquest)	27 4WD=Sport Utility (Raider)
M=Medium	S=Special		41 FWD=4-Dr Sedan (Colt & Eagle Vista)	45 FWD=4-Dr Station Wagon (Colt)
				45 FWD-4WD=Station Wagon (Vista)

AR=Use as Required # =New Part Number - =Non Illustrated Part Printed in U.S.A. FEBRUARY, 1989

1987-88 IMPORT PARTS CATALOG

Figure ITB-1300
Illus. Page ITB-51

INTERIOR TRIM CONQUEST

ITEM	PART NUMBER	QTY	BODY	MODEL	DESCRIPTION
SEAT REAR					
24 RWD - CONQUEST					
LEFT					
	#MB49 5725	1			Black
	#MB49 5726	1			Red
RIGHT					
	#MB49 5727	1			Black
	#MB49 5728	1			Red
6					CAP, Seat Back Panel Screw
	MB22 5969	10			Black
	MB29 9314	10			Red
7	MF45 3737	10			SCREW, Tapping (4x25)
8					CUSHION, Rear Seat
1987					
w/o Leather Seat					
	#MB70 8247	1			Black
	#MB70 8248	1			Red
1988					
	MB72 0691	1			Red
	MB72 0690	1			Black
	MB72 0692	1			Beige
1987					
w/Leather Seat					
	#MB70 8251	1			Black
	#MB70 8250	1			Red
1988					
(Use Up To 10-87)					
	MB72 0685	1			Red
	MB72 0686	1			Black
	MB72 0687	1			Beige
(Use After 10-87)					
	MB73 1294	1			Red
	MB73 1295	1			Black
	MB73 1296	1			Beige
9					COVER, Rear Seat Cushion
1987					
w/o Leather Seat					
	#MB70 8252	1			Black
	#MB70 8253	1			Red
1988					
	MB72 0705	1			Red
	MB72 0704	1			Black
	MB72 0706	1			Beige
1987					
w/Leather Seats					
	#MB70 8256	1			Black
	#MB70 8255	1			Red
1988					
(Use Up To 10-87)					
	MB72 0699	1			Red
	MB72 0700	1			Black
	MB72 0701	1			Beige
(Use After 10-87)					

ENGINE:	Q=1500 cc	A=2000 cc	TRANS:	A=Automatic	4=4-Speed Manual
Blank=All	K=1600 cc (w/o Balance Shaft)	F=2600 cc (Car)	Blank=All	M=All Manual	5=5-Speed Manual
	W=2600 cc (Truck)				8=4 x 2 Manual
SERIES:	H=High	MODELS:	24 FWD=2-Dr Hatchback (Colt)	27 RWD-4WD=Pickup (Ram 50, Power Ram 50)	
L=Low	P=Premium	24 RWD=2-Dr Hatchback (Conquest)	27 4WD=Sport Utility (Raider)	45 FWD=4-Dr Station Wagon (Colt)	
M=Medium	S=Special	41 FWD=4-Dr Sedan (Colt & Eagle Vista)		45 FWD-4WD=Station Wagon (Vista)	
AR=Use as Required	# =New Part Number	- =Non Illustrated Part		Printed in U.S.A.	FEBRUARY, 1989

1987-88 IMPORT PARTS CATALOG

Figure ITB-1300
 Illus. Page ITB-52

INTERIOR TRIM CONQUEST

ITEM	PART NUMBER	QTY	BODY	MODEL	DESCRIPTION
------	-------------	-----	------	-------	-------------

SEAT REAR 24 RWD - CONQUEST

	MB73 1301	1			Red
	MB73 1302	1			Black
	MB73 1303	1			Beige
10	MS45 0251	2			SCREW, Tapping (6x30)
11	MB19 0683	8			BOLT, w/Washer
12					STRIKER, Rear Seat Latch
	MB19 0440	1			Left
	MB19 0441	1			Right
13	MS24 0175	3			BOLT, w/Washer
14					COVER, Rear Cushion Anchor
	#MB46 8640	2			Black
	MB32 3814	2			Red
	MB72 0386	2			Beige
15	MF45 3048	4			SCREW, Tapping (6x20)
16	MB22 3246	4			GROMMET
17	MF45 3031	4			SCREW, Tapping (5x12)
18	MB19 0442	2			BRACKET
19	MS24 0180	3			BOLT, w/Washer (8X20)

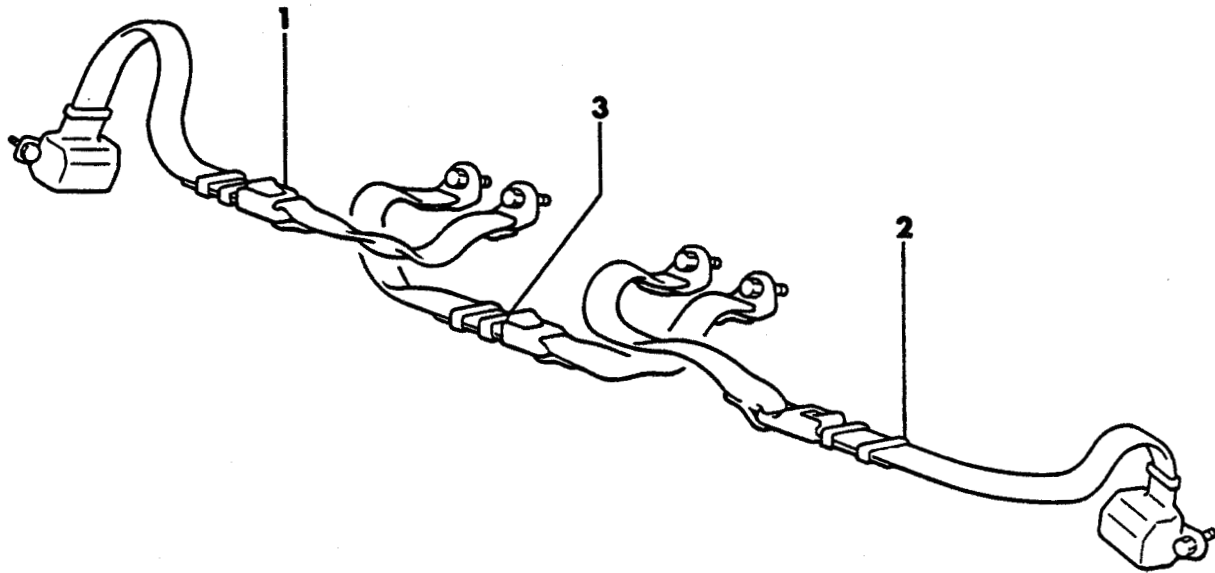
ENGINE:	Q=1500 cc	A=2000 cc	TRANS:	A=Automatic	4=4-Speed Manual
Blank=All	K=1600 cc (w/o Balance Shaft)	F=2600 cc (Car)	Blank=All	M=All Manual	5=5-Speed Manual
	W=2600 cc (Truck)				8=4 x 2 Manual

SERIES:	H=High	MODELS:	24 FWD=2-Dr Hatchback (Colt)	27 RWD-4WD=Pickup (Ram 50, Power Ram 50)
L=Low	P=Premium		24 RWD=2-Dr Hatchback (Conquest)	27 4WD=Sport Utility (Raider)
M=Medium	S=Special		41 FWD=4-Dr Sedan (Colt & Eagle Vista)	45 FWD=4-Dr Station Wagon (Colt)
				45 FWD-4WD=Station Wagon (Vista)

AR=Use as Required # = New Part Number — = Non Illustrated Part Printed in U.S.A. FEBRUARY, 1989

7732 1400

BELTS SEAT REAR
24 RWD - CONQUEST



1987-88 IMPORT PARTS CATALOG

Figure ITB-1400
Illus. Page ITB-55

INTERIOR TRIM CONQUEST

ITEM	PART NUMBER	QTY	BODY	MODEL	DESCRIPTION
------	-------------	-----	------	-------	-------------

BELTS SEAT REAR 24 RWD - CONQUEST

1					BELT, Rear Lap
					RIGHT
	#MB49 4160	1			Black
	#MB49 4161	1			Red
2					BELT, Rear Lap
					LEFT
	#MB49 4158	1			Black
	#MB49 4159	1			Red
3					BELT, Rear Lap Center
	#MB49 4164	1			Black
	#MB49 4165	1			Red

ENGINE:	Q=1500 cc	A=2000 cc	TRANS:	A=Automatic	4=4-Speed Manual
Blank=All	K=1600 cc (w/o Balance Shaft)	F=2600 cc (Car)	Blank=All	M=All Manual	5=5-Speed Manual
	W=2600 cc (Truck)				8=4 x 2 Manual
SERIES:	H=High	MODELS:	24 FWD=2-Dr Hatchback (Colt)	27 RWD-4WD=Pickup (Ram 50, Power Ram 50)	
L=Low	P=Premium		24 RWD=2-Dr Hatchback (Conquest)	27 4WD=Sport Utility (Raider)	45 FWD=4-Dr Station Wagon (Colt)
M=Medium	S=Special		41 FWD=4-Dr Sedan (Colt & Eagle Vista)		45 FWD-4WD=Station Wagon (Vista)
AR=Use as Required	#=New Part Number	-=Non Illustrated Part		Printed in U.S.A.	FEBRUARY, 1989