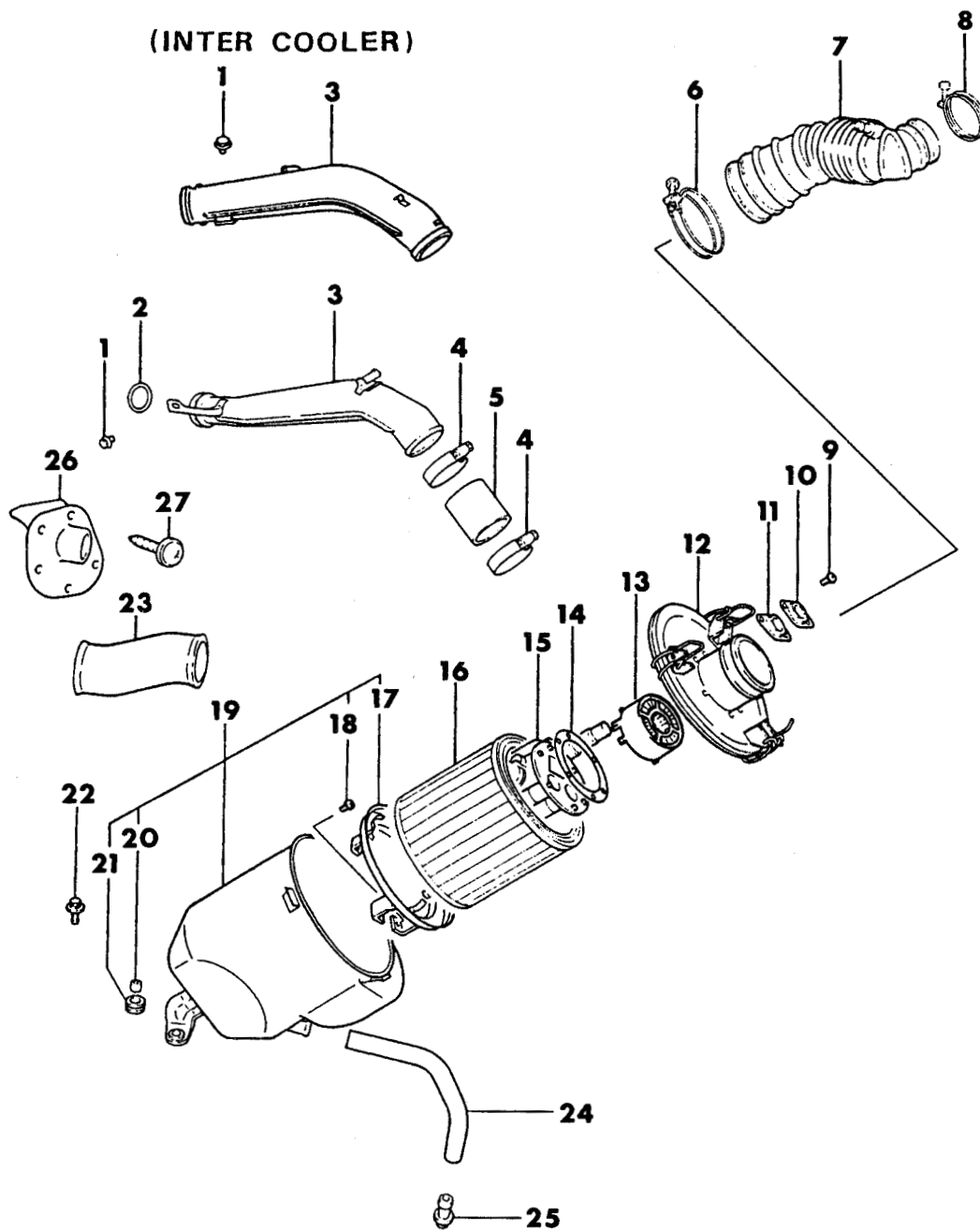


AIR CLEANER - F ENGINE TURBO
24 RWD - CONQUEST 1987

7714 400 D



1987-88 IMPORT PARTS CATALOG

Figure 14-400
Illus. Page 14-15

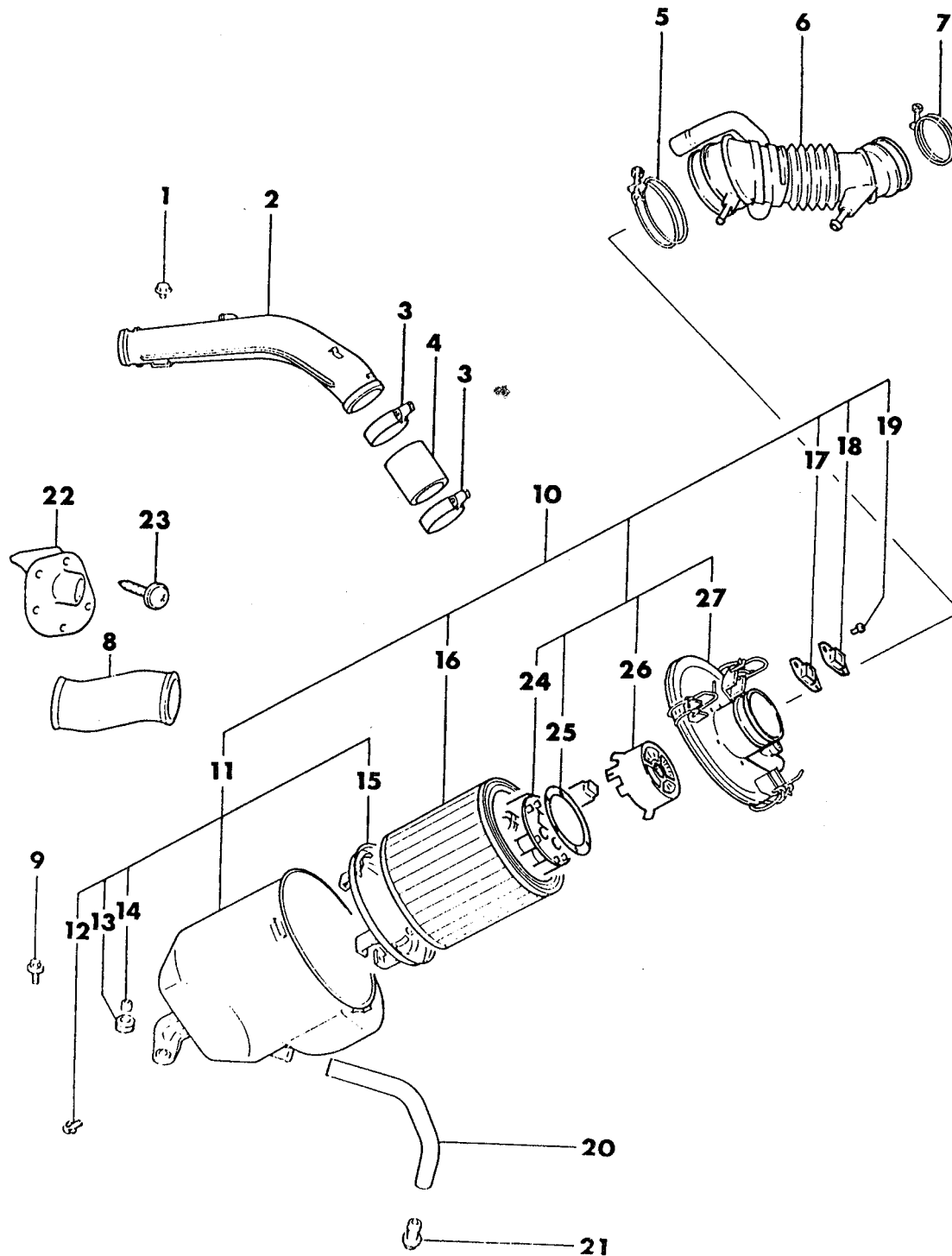
FUEL

ITEM	PART NUMBER	QTY	BODY	MODEL	DESCRIPTION
AIR CLEANER - F ENGINE TURBO					
24 RWD - CONQUEST 1987					
1					BOLT, Flange
	MF14 0202	1			w/o Inter-Cooler, (6x10mm)
	MF14 0221	1			w/Inter-Cooler, (8x12mm)
2	MD07 0507	1			O-RING, w/o Inter-Cooler
3					PIPE, Air Intake
	MD07 1504	1			w/o Inter-Cooler
	MD10 8987	1			w/Inter-Cooler
4	MD07 3340	2			CLAMP, Hose
5	MD06 3073	1			HOSE, Air
6	MF66 1041	1			CLAMP, Hose
7					HOSE, Air Intake
	# MD10 4713	1			(use up to 4/87)
	MD12 2530	1			(use after 5/87)
8	MD07 3606	1			CLAMP, Hose
9	MF35 0744	8			SCREW and WASHER (4x10mm)
10	MD62 0005	1			COVER
11	MD62 0003	1			GROMMET
12	MD62 0052	1			COVER, Air Cleaner
13	MD62 0000	1			FILTER, Noise Reduction
14	MD62 0002	1			GASKET, Air Flow Sensor
15	MD10 3865	1			SENSOR, Air Flow
16	MD60 7648	1			ELEMENT, Air Cleaner
17	MD60 3833	1			PLATE
18	MF35 0744	1			SCREW and WASHER (4x10mm)
19					BODY, Air Cleaner
	MD62 0022	1			w/Inter-Cooler
	MD62 0051	1			w/o Inter-Cooler
20	MT20 6583	1			COLLAR, Insulator
21	MD04 0886	1			INSULATOR
22	MF24 7253	3			BOLT and WASHER (8x25mm)
23	MD04 1960	1			DUCT, Air
24	MD01 2531	1			HOSE, Drain
25	MD05 0158	1			NIPPLE, Drain
26	MB23 3173	1			PIPE, Air Intake
27	MS45 0156	AR			SCREW, Tapping

ENGINE:	Q=1500 cc	A=2000 cc	TRANS:	A=Automatic	4=4-Speed Manual
Blank=All	K=1600 cc (w/o Balance Shaft)	F=2600 cc (Car)	Blank=All	M=All Manual	5=5-Speed Manual
	W=2600 cc (Truck)				8=4 x 2 Manual
SERIES:	H=High	MODELS:	24 FWD=2-Dr Hatchback (Colt)	27 RWD-4WD=Pickup (Ram 50, Power Ram 50)	
L=Low	P=Premium		24 RWD=2-Dr Hatchback (Conquest)	27 4WD=Sport Utility (Raider)	45 FWD=4-Dr Station Wagon (Colt)
M=Medium	S=Special		41 FWD=4-Dr Sedan (Colt & Eagle Vista)		45 FWD-4WD=Station Wagon (Vista)
AR=Use as Required		# =New Part Number	--=Non Illustrated Part	Printed in U.S.A.	FEBRUARY, 1989

AIR CLEANER - F ENGINE TURBO
24 RWD - CONQUEST 1988

7714 425 B



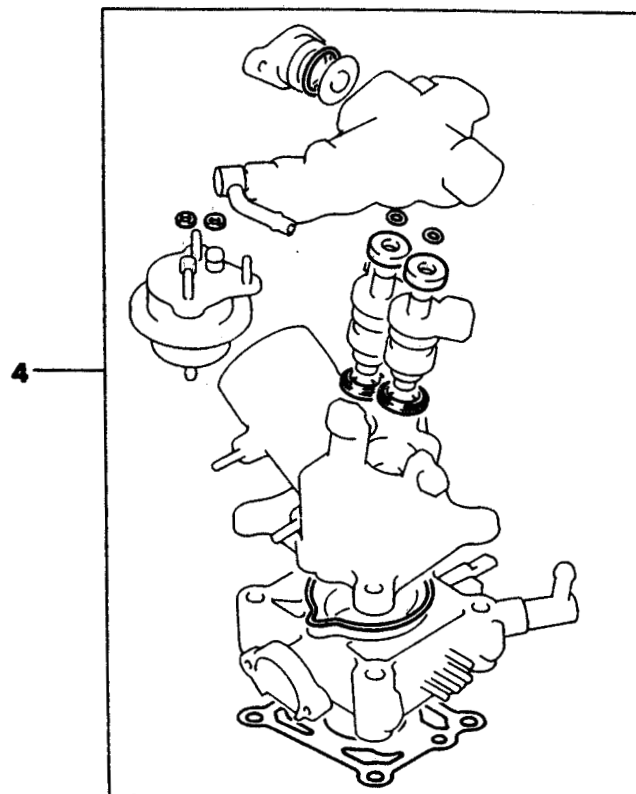
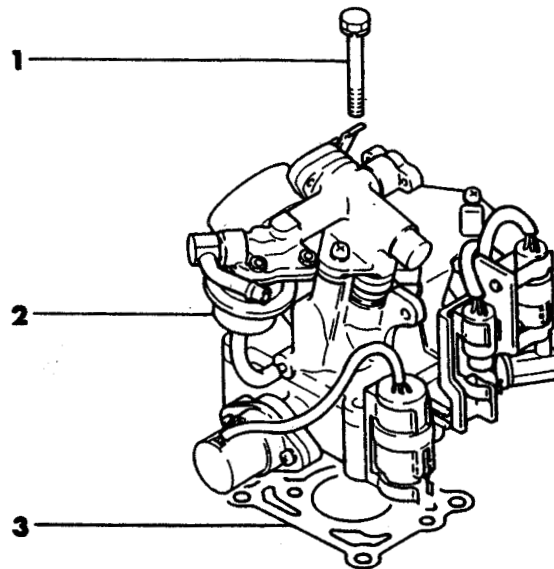
1987-88 IMPORT PARTS CATALOG

Figure 14-425
Illus. Page 14-17

FUEL

ITEM	PART NUMBER	QTY	BODY	MODEL	DESCRIPTION
AIR CLEANER - F ENGINE TURBO 24 RWD - CONQUEST 1988					
1	MF14 0221	1			BOLT, Flange (8x12)
2	MD10 8987	1			PIPE, Air Intake
3	MD07 3340	2			CLAMP, Hose (70)
4	MD06 3073	1			HOSE, Air Cleaner to Pipe Joint
5	MD12 2530	1			CLAMP, Hose (90)
6	MD12 5437	1			HOSE, Air Intake
7	MD07 3606	1			CLAMP, Hose (71)
8	MD04 1960	1			DUCT, Air Cleaner
9	MF24 8193	3			BOLT (8x25mm)
10	MD12 8105	1			AIR CLEANER
11	MD62 0022	1			BODY, Air Cleaner
12	MF35 1284	4			SCREW and WASHER (4x10mm)
13	MD04 0886	3			INSULATOR, Air Cleaner Support
14	MT20 6583	3			COLLAR, Insulator Support
15	MD60 3833	1			PLATE, Element Support
16	MD60 7648	1			ELEMENT, Air Cleaner
17	MD62 0003	1			GROMMET, Sensor Cable
18	MD62 0005	1			COVER, Sensor
19	MF35 1284	2			SCREW and WASHER (4x10mm)
20	MD01 2531	1			HOSE
21	MD05 0158	1			NIPPLE
22	MB23 3173	1			PIPE, Air Intake
23	MS45 0157	AR			SCREW, Tapping
24					SENSOR, Air Flow (serviced in item 10)
25	MD62 0340	1			GASKET, Air Flow Sensor
26	# MD62 0000	1			FILTER, Noise Reduction
27					COVER, Air Cleaner (serviced in item 10)

ENGINE:		Q=1500 cc	A=2000 cc	TRANS:	A=Automatic	4=4-Speed Manual
Blank=All		K=1600 cc (w/o Balance Shaft)	F=2600 cc (Car)	Blank=All	M=All Manual	5=5-Speed Manual
		W=2600 cc (Truck)				8=4 x 2 Manual
SERIES:	H=High	MODELS: 24 FWD=2-Dr Hatchback (Colt)		27 RWD-4WD=Pickup (Ram 50, Power Ram 50)		
L=Low	P=Premium	24 RWD=2-Dr Hatchback (Conquest)		27 4WD=Sport Utility (Raider)		
M=Medium	S=Special	41 FWD=4-Dr Sedan (Colt & Eagle Vista)		45 FWD=4-Dr Station Wagon (Colt)		
				45 FWD-4WD=Station Wagon (Vista)		
AR=Use as Required		# =New Part Number	— =Non Illustrated Part		Printed in U.S.A.	FEBRUARY, 1989

7714 2600 AINJECTION MIXER - F ENGINE
24'RWD - CONQUEST

1987-88 IMPORT PARTS CATALOG

Figure 14-2600
Illus. Page 14-75

FUEL

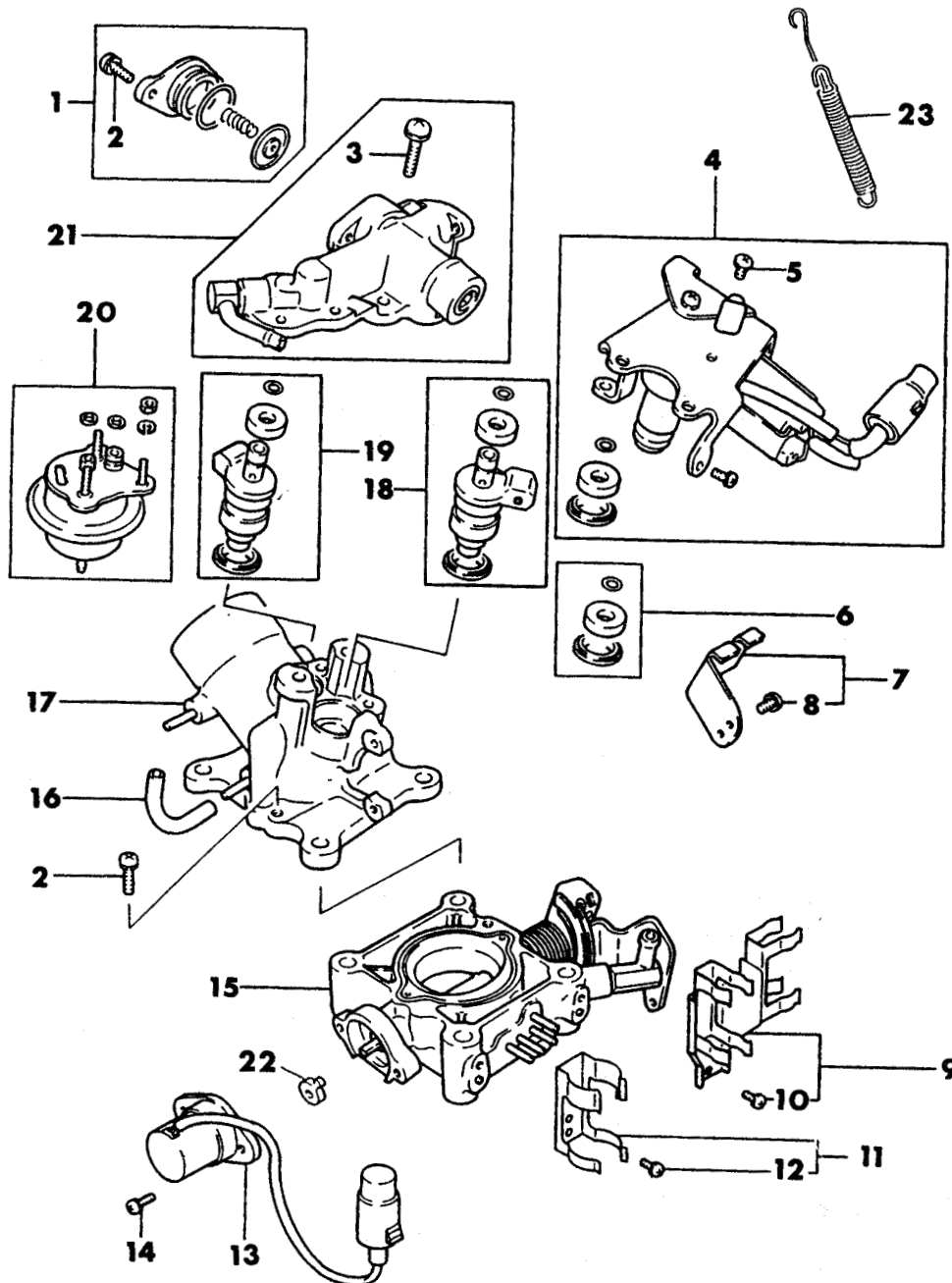
ITEM	PART NUMBER	QTY	BODY	MODEL	DESCRIPTION
------	-------------	-----	------	-------	-------------

INJECTION MIXER - F ENGINE 24 RWD - CONQUEST

1	MF24 1265	1			BOLT and WASHER (8x60mm)
2	MD10 6393	1			MIXER, Injection
3	MD07 0522	1			GASKET, Injection Mixer
4	MD61 4116	1			O-RING SET

ENGINE:		Q=1500 cc	A=2000 cc	TRANS:		A=Automatic	4=4-Speed Manual
Blank=All		K=1600 cc (w/o Balance Shaft)	F=2600 cc (Car)	Blank=All		M=All Manual	5=5-Speed Manual
		W=2600 cc (Truck)					8=4 x 2 Manual
SERIES:		H=High	MODELS:		24 FWD=2-Dr Hatchback (Colt)	27 RWD-4WD=Pickup (Ram 50, Power Ram 50)	
L=Low		P=Premium			24 RWD=2-Dr Hatchback (Conquest)	27 4WD=Sport Utility (Raider)	45 FWD=4-Dr Station Wagon (Colt)
M=Medium		S=Special			41 FWD=4-Dr Sedan (Colt & Eagle Vista)		45 FWD-4WD=Station Wagon (Vista)
AR=Use as Required		# =New Part Number	-- =Non Illustrated Part		Printed in U.S.A.		FEBRUARY, 1989

7714 2700 A

MIXER INNER PARTS - F ENGINE
24 RWD - CONQUEST

1987-88 IMPORT PARTS CATALOG

Figure 14-2700
Illus. Page 14-77

FUEL

ITEM	PART NUMBER	QTY	BODY	MODEL	DESCRIPTION
------	-------------	-----	------	-------	-------------

MIXER INNER PARTS - F ENGINE 24 RWD - CONQUEST

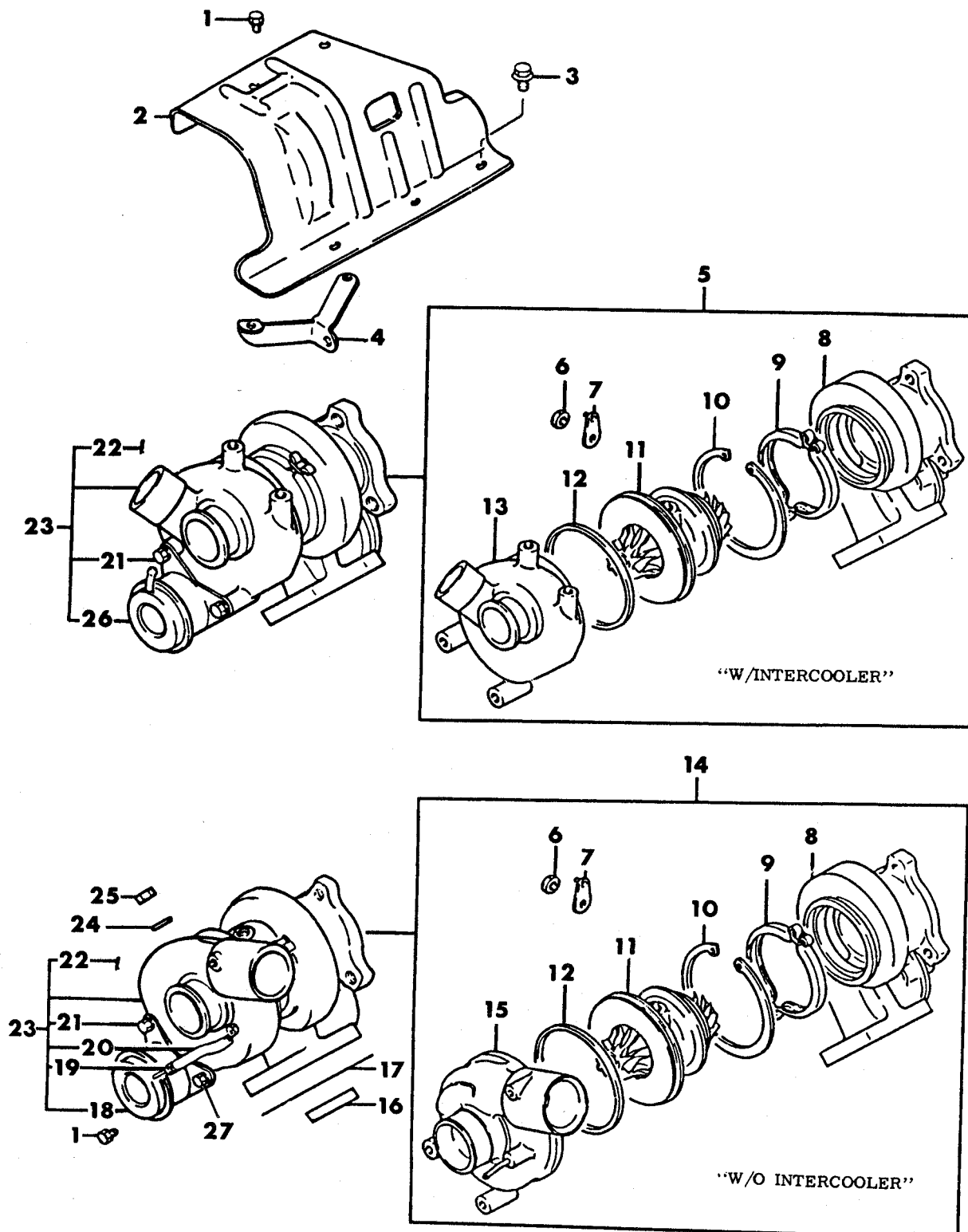
1	MD61 4108	1			DAMPER KIT, Pulsation
2	MF35 0170	4			SCREW and WASHER (5x16mm)
3	MF35 0195	2			SCREW and WASHER (6x20))
4	MD61 4101	1			SERVO, ISC
5	MD61 4066	4			SCREW and WASHER
6	MD61 4110	1			SEAL SET, Injector
7	MD60 8911	1			BRACKET, Throttle Cable
8	MF35 0167	2			SCREW and WASHER (5x10mm)
9	MD61 4117	1			BRACKET, Connector
10	MD61 4080	2			SCREW and WASHER
11	MD60 8926	1			BRACKET, Connector
12	MF35 0143	1			SCREW and WASHER (4x8mm)
13	MD61 4078	1			SENSOR, Throttle
14	MD61 4065	2			SCREW and WASHER
15	MD61 4105	1			BODY, Throttle
16	MD60 8746	1			HOSE (80)
17	MD61 4107	1			BODY, Mixing
18	MD61 4102	1			INJECTOR SET, Rear <i>GREEN</i>
19	MD61 4036	1			INJECTOR SET, Front <i>BLACK</i>
20	MD61 4109	1			REGULATOR, Fuel Pressure
21	MD60 8905	1			HOLDER, Injector
22	MD60 8978	1			JOINT
23	MD60 6647	1			SPRING, Throttle Return

MD61 4102

ENGINE:	Q=1500 cc	A=2000 cc	TRANS:	A=Automatic	4=4-Speed Manual
Blank=All	K=1600 cc (w/o Balance Shaft)	F=2600 cc (Car)	Blank=All	M=All Manual	5=5-Speed Manual
	W=2600 cc (Truck)				8=4 x 2 Manual
SERIES:	H=High	MODELS:	24 FWD=2-Dr Hatchback (Colt)	27 RWD-4WD=Pickup (Ram 50, Power Ram 50)	
L=Low	P=Premium		24 RWD=2-Dr Hatchback (Conquest)	27 4WD=Sport Utility (Raider)	45 FWD=4-Dr Station Wagon (Colt)
M=Medium	S=Special		41 FWD=4-Dr Sedan (Colt & Eagle Vista)		45 FWD-4WD=Station Wagon (Vista)
AR=Use as Required	# =New Part Number	- =Non Illustrated Part		Printed in U.S.A.	FEBRUARY, 1989

TURBO CHARGER - F ENGINE
24 RWD - CONQUEST

7714 2900 A



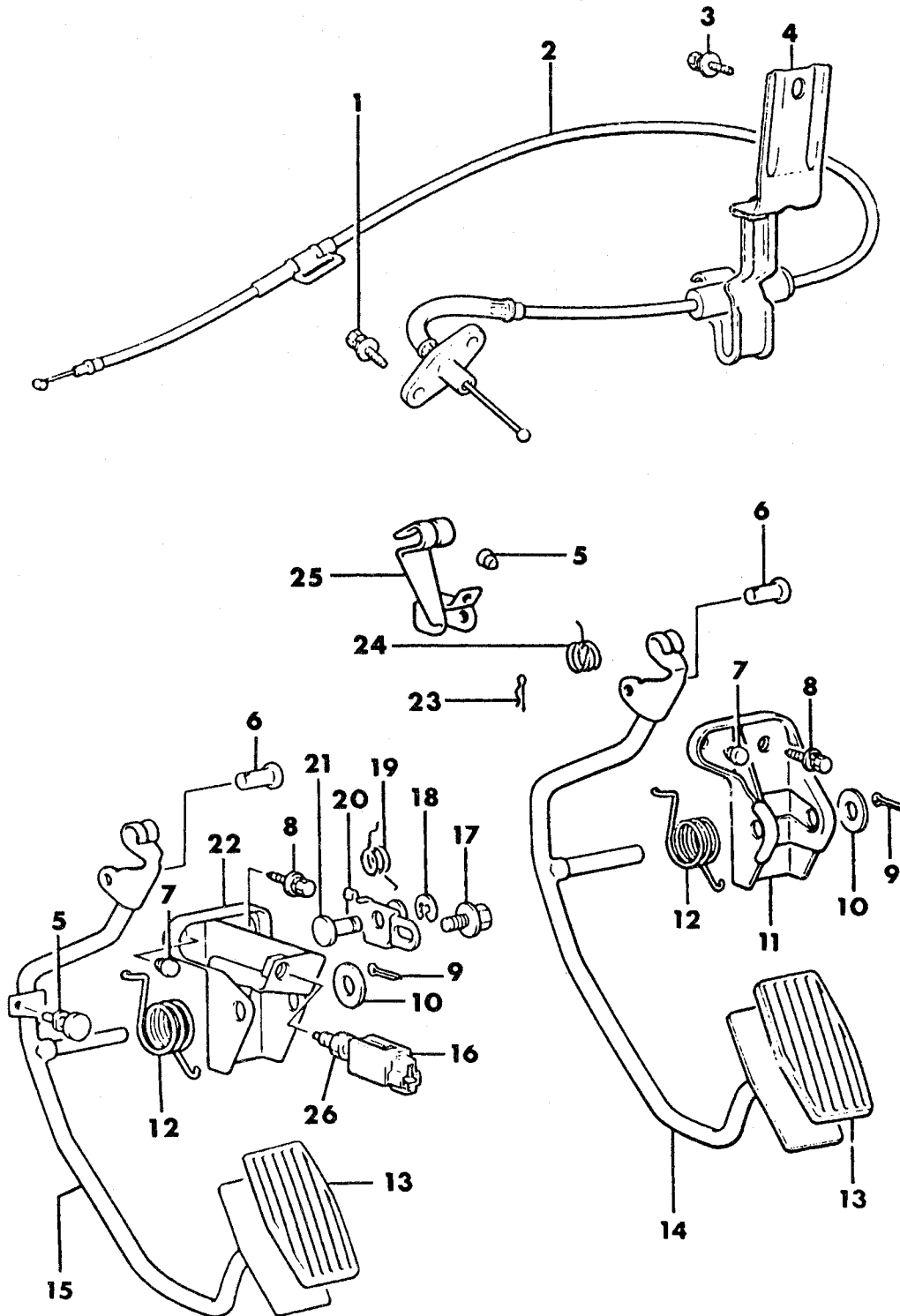
1987-88 IMPORT PARTS CATALOG

Figure 14-2900
Illus. Page 14-85

FUEL

ITEM	PART NUMBER	QTY	BODY	MODEL	DESCRIPTION
TURBO CHARGER - F ENGINE					
24 RWD - CONQUEST					
1	MF24 3622	2			BOLT and WASHER (6x12mm)
2	MD08 7501	1			PROTECTOR, Heat
3	MD06 7956	4			BOLT, Flange
4	MD06 3898	1			STAY, Heat Protector
5	MD09 2073	1			CHARGER, Turbo, Sub-Assy., w/Inter-Cooler
6	MD61 3770	1			NUT
7	MD61 3593	1			LEVER
8	MD61 3514	1			HOUSING, Turbine
9	MD61 3590	1			COUPLING, Turbo Charger
10	MD61 3591	1			SNAP RING, Turbo Charger
11	MD61 3680	1			CARTRIDGE, Turbo Charger
12	MD61 3776	1			O-RING, Turbo Charger
13	MD61 3641	1			COVER, Compressor
14	MD11 2705	1			CHARGER, Turbo, Sub - Assy., w/o Inter-Cooler
15					COVER, Compressor, w/o Inter-Cooler
	MD61 3647	1			1987
	MD61 3641	1			1988
16	MD04 1335	1			RING, Seal
17	MD04 1333	1			GASKET, Turbo Charger to Exhaust Manifold
18					ACTUATOR, Waste Gate, w/o Inter-Cooler
	MD08 3042	1			1987 (1 hose)
	MD12 2417	1			1988 (3 hoses)
19	MS66 0159	2			CLAMP, Hose, (7.8mm)
20	MD07 6889	1			HOSE, Boost, w/o Inter-Cooler
21	MF24 1251	2			BOLT and WASHER (8x16mm)
22	MF47 2301	1			PIN, Snap, (4mm)
23					CHARGER, Turbo
	MD09 2073	1			w/Inter-Cooler, Less Actuator
	MD11 2705	1			w/o Inter-Cooler, Less Actuator
24	MD05 0076	4			WASHER, Plain, (10mm)
25	MD05 0073	4			NUT (10mm)
26	MD09 2074	1			ACTUATOR, Waste Gate, w/Inter-Cooler (1 hose)
27	MF24 1251	2			BOLT and WASHER (8x16)

ENGINE:	Q=1500 cc	A=2000 cc	TRANS:	A=Automatic	4=4-Speed Manual
Blank=All	K=1600 cc (w/o Balance Shaft)	F=2600 cc (Car)	Blank=All	M=All Manual	5=5-Speed Manual
	W=2600 cc (Truck)				8=4 x 2 Manual
SERIES:	H=High	MODELS: 24 FWD=2-Dr Hatchback (Colt)	27 RWD-4WD=Pickup (Ram 50, Power Ram 50)		
L=Low	P=Premium	24 RWD=2-Dr Hatchback (Conquest)	27 4WD=Sport Utility (Raider)	45 FWD=4-Dr Station Wagon (Colt)	
M=Medium	S=Special	41 FWD=4-Dr Sedan (Colt & Eagle Vista)		45 FWD-4WD=Station Wagon (Vista)	
AR=Use as Required	# =New Part Number	- =Non Illustrated Part	Printed in U.S.A.	FEBRUARY, 1989	

7714 3600ACCELERATOR LINKAGE
24 RWD - CONQUEST

1987-88 IMPORT PARTS CATALOG

Figure 14-3600

Illus. Page 14-93

FUEL

ITEM	PART NUMBER	QTY	BODY	MODEL	DESCRIPTION
------	-------------	-----	------	-------	-------------

ACCELERATOR LINKAGE 24 RWD - CONQUEST

1	MS24 0022	2			BOLT and WASHER (6x20mm)
2	MB32 2267	1			CABLE, Accelerator
3	MS24 0028	1			BOLT and WASHER (6x12mm)
4	MB18 1142	1			CLAMP, Accelerator
5	MB15 1298	1			STOPPER, Brake Pedal
6	MF47 2983	1			PIN, Clevis, (8x32mm)
7	MA15 2079	1			STOPPER, Accelerator Arm
8	MS24 0045	2			BOLT and WASHER (8x20mm)
9	MF47 2067	1			PIN, Split, (3x20mm)
10	MA15 2064	1			WASHER
11	MB01 1397	1			BRACKET, Pedal, w/Manual Trans.
12	MA15 2074	1			SPRING, Accelerator Arm
13	MA15 2266	1			PAD, Pedal
14	MB18 1437	1			ARM, Accelerator, w/Manual Trans.
15	MB32 2830	1			ARM, Accelerator, w/Auto Trans.
16	MB50 9422	1			SWITCH, Auto Trans.
17	MF24 3622	1			BOLT and WASHER, w/Auto Trans. (6x12mm)
18	MF52 2405	1			SNAP RING, (7mm), w/Auto Trans.
19	MB32 2834	1			SPRING, w/Auto Trans.
20	MB32 2833	1			HOLDER, Spring, w/Auto Trans.
21	MF47 3904	1			PIN, Clevis, (8x16mm), w/Auto Trans.
22	MB32 2831	1			BRACKET, w/Auto Trans.
23	MF47 2051	1			PIN, Split, (2.5x18mm)
24	MB18 1362	1			SPRING, Accelerator Arm
25	MB18 1441	1			LEVER
26	MF43 0726	1			NUT, Jam, (10mm)

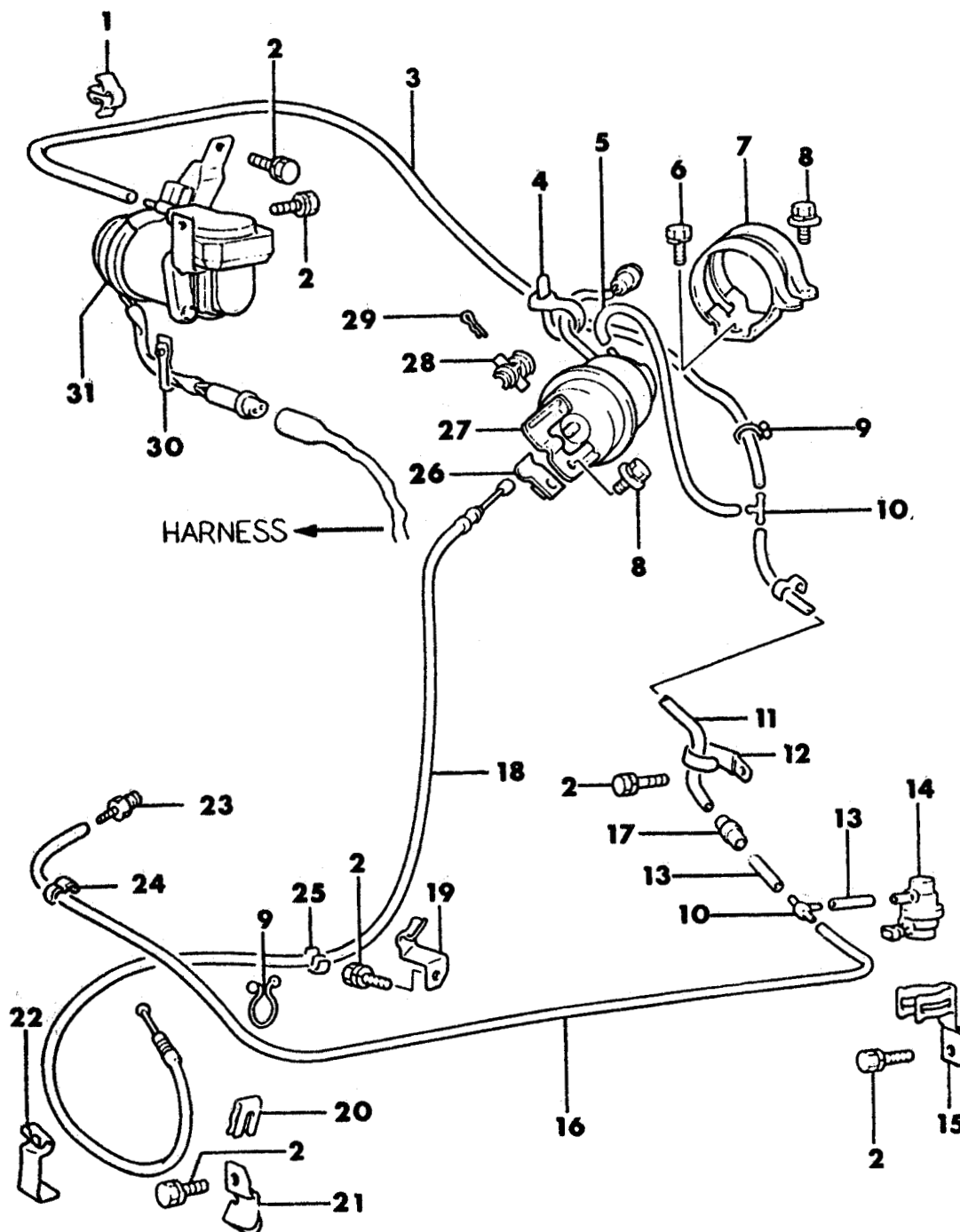
ENGINE:	Q=1500 cc	A=2000 cc	TRANS:	A=Automatic	4=4-Speed Manual
Blank=All	K=1600 cc (w/o Balance Shaft)	F=2600 cc (Car)	Blank=All	M=All Manual	5=5-Speed Manual
	W=2600 cc (Truck)				8=4 x 2 Manual

SERIES:	H=High	MODELS:	24 FWD=2-Dr Hatchback (Colt)	27 RWD-4WD=Pickup (Ram 50, Power Ram 50)
L=Low	P=Premium		24 RWD=2-Dr Hatchback (Conquest)	27 4WD=Sport Utility (Raider)
M=Medium	S=Special		41 FWD=4-Dr Sedan (Colt & Eagle Vista)	45 FWD=4-Dr Station Wagon (Colt)
				45 FWD-4WD=Station Wagon (Vista)

AR=Use as Required # =New Part Number -- =Non Illustrated Part Printed in U.S.A. FEBRUARY, 1989

SPEED CONTROL - FACTORY INSTALLED
24 RWD - CONQUEST

7714 4100



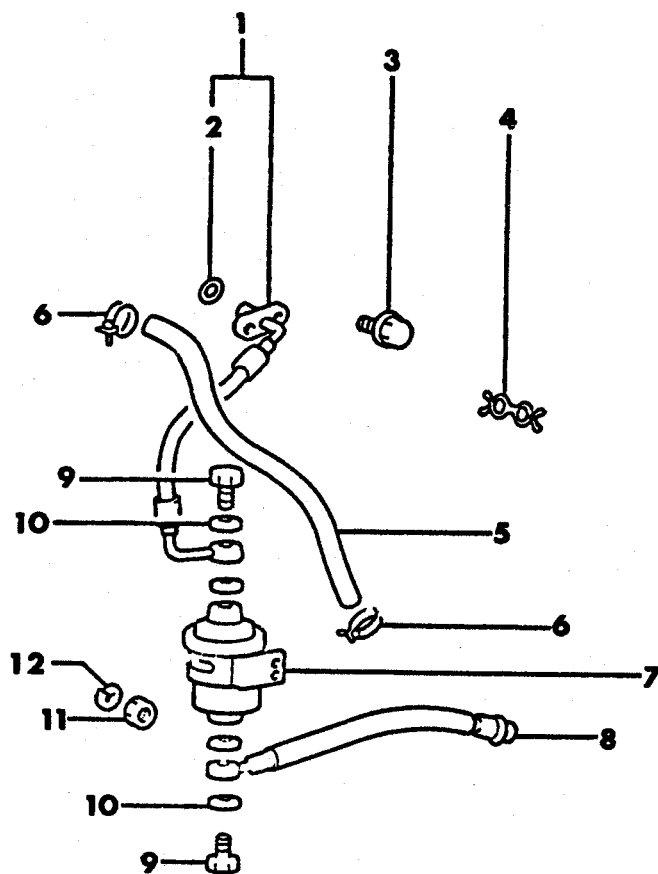
FUEL

ITEM	PART NUMBER	QTY	BODY	MODEL	DESCRIPTION
------	-------------	-----	------	-------	-------------

SPEED CONTROL - FACTORY INSTALLED
24 RWD - CONQUEST

1	MB19 6151	2			CLIP
2	#MF14 0022	5			BOLT and WASHER (8x16mm)
3	MB32 2094	1			HOSE, Vacuum
4		1			BAND, Cable (not serviced)
5	MD03 0205	1			HOSE, Vacuum, (160mm)
6	MF24 0023	2			BOLT and WASHER (6x12mm)
7	MB01 1873	1			BRACKET, Accelerator
8	MF24 3623	3			BOLT and WASHER (6x14mm)
9	MS47 0362	2			CLIP, Snap, (20mm)
10	MD00 1865	2			TERMINAL, Vacuum
11	MD03 0258	1			HOSE, Vacuum, (460mm)
12	MS47 0059	1			CLIP (80mm)
13	MB18 1430	2			HOSE, Vacuum
14	MB18 1426	1			SWITCH, Vacuum
15	MB18 1427	1			CLAMP, Vacuum Switch
16	MB32 2093	1			HOSE, Vacuum
17	MB18 8950	1			VALVE, Vacuum Check
18	MB18 1432	1			CABLE
19	MB18 1433	1			CLAMP, Speed Control Cable
20	MB18 1363	1			CLIP
21	MB18 1443	1			BRACKET
22	MB18 1365	1			CLIP
23	MB23 9150	1			FITTING
24	MD00 1843	4			CLAMP, Hose
25	MB18 1581	1			CLIP
26	MB01 1881	1			CLAMP
27	MB32 2824	1			ACTUATOR, Speed Control
28	MB18 1123	2			COVER, Dust
29	MF47 2303	1			PIN, Snap, (6mm)
30	MS47 0401	2			BAND, Cable, (40mm)
31	MB32 2827	1			PUMP, Vacuum

ENGINE:		Q=1500 cc	A=2000 cc	TRANS:	A=Automatic	4=4-Speed Manual
Blank=All		K=1600 cc (w/o Balance Shaft)	F=2600 cc (Car)	Blank=All	M=All Manual	5=5-Speed Manual
		W=2600 cc (Truck)				8=4 x 2 Manual
SERIES:	H=High	MODELS: 24 FWD=2-Dr Hatchback (Colt)		27 RWD-4WD=Pickup (Ram 50, Power Ram 50)		
L=Low	P=Premium	24 RWD=2-Dr Hatchback (Conquest)		27 4WD=Sport Utility (Raider)	45 FWD=4-Dr Station Wagon (Colt)	
M=Medium	S=Special	41 FWD=4-Dr Sedan (Colt & Eagle Vista)			45 FWD-4WD=Station Wagon (Vista)	
AR=Use as Required		# =New Part Number	— =Non Illustrated Part		Printed in U.S.A.	FEBRUARY, 1989

FUEL FILTERS
24 RWD - CONQUEST**7714 4375**

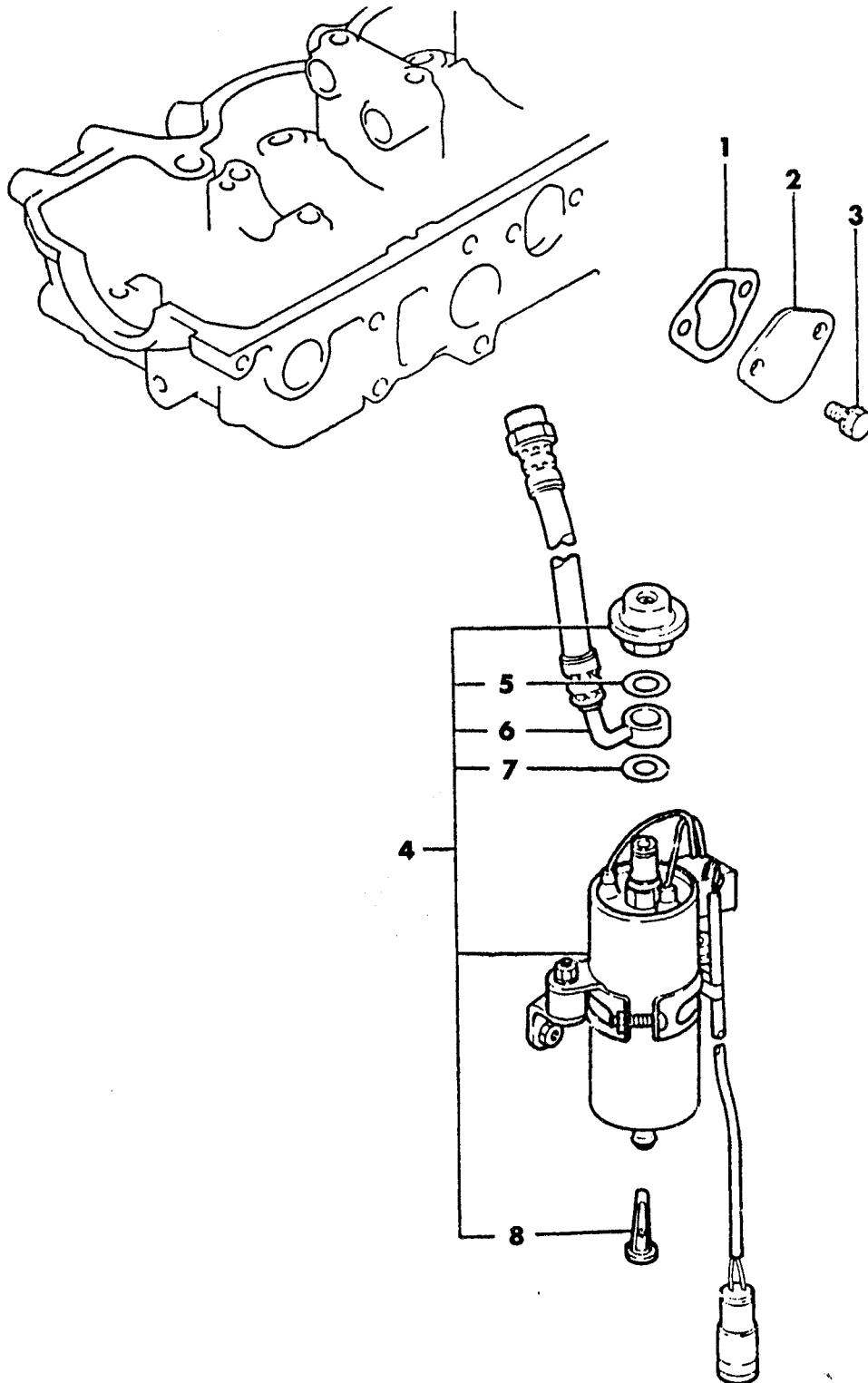
1987-88 IMPORT PARTS CATALOG

Figure 14-4375
Illus. Page 14-125

FUEL

ITEM	PART NUMBER	QTY	BODY	MODEL	DESCRIPTION
FUEL FILTERS					
24 RWD - CONQUEST					
1	MB43 3990	1			HOSE, Fuel High Pressure, Out
2					O-RING
	MF52 0087	1			(use up to 9/86)
	MB55 4316	1			(use after 10/86)
3	MS24 0036	2			BOLT and WASHER (5x12mm)
4	MS47 0369	1			CLIP, Snap, (13-13mm)
5	MB50 3814	1			HOSE, Fuel
6	MB50 3823				CLIP, Hose
7	MB50 4732	1			FILTER, Fuel High Pressure
8	MB43 3975	1			HOSE, Fuel High Pressure, In
9	MS65 0013	2			BOLT, Eye, (12x23mm)
10	MF66 0064	4			GASKET (12mm)
11	MF43 0005	2			NUT (8mm)
12	MF45 0405	2			WASHER, Spring, (8mm)

ENGINE:		Q=1500 cc	A=2000 cc	TRANS:		A=Automatic	4=4-Speed Manual
Blank=All		K=1600 cc (w/o Balance Shaft)	F=2600 cc (Car)	Blank=All		M=All Manual	5=5-Speed Manual
		W=2600 cc (Truck)					8=4 x 2 Manual
SERIES:		H=High	MODELS:		24 FWD=2-Dr Hatchback (Colt)	27 RWD-4WD=Pickup (Ram 50, Power Ram 50)	
L=Low		P=Premium			24 RWD=2-Dr Hatchback (Conquest)	27 4WD=Sport Utility (Raider)	45 FWD=4-Dr Station Wagon (Colt)
M=Medium		S=Special			41 FWD=4-Dr Sedan (Colt & Eagle Vista)		45 FWD-4WD=Station Wagon (Vista)
AR=Use as Required		# = New Part Number	-- = Non Illustrated Part		Printed in U.S.A.		FEBRUARY, 1989

7714 4800FUEL PUMP
24 RWD - CONQUEST

1987-88 IMPORT PARTS CATALOG

Figure 14-4600
Illus. Page 14-137

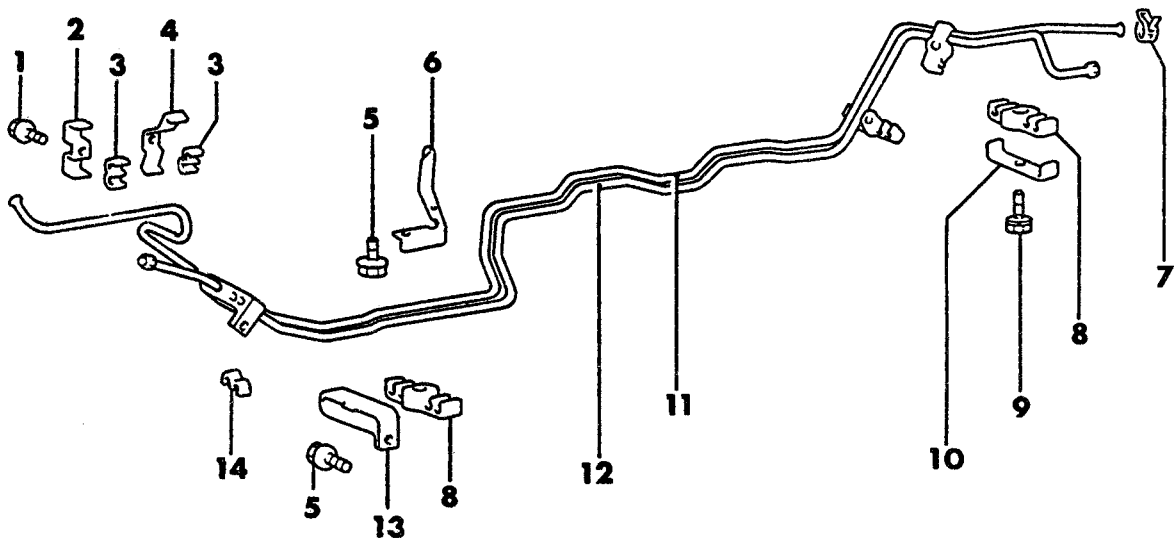
FUEL

ITEM	PART NUMBER	QTY	BODY	MODEL	DESCRIPTION
------	-------------	-----	------	-------	-------------

FUEL PUMP 24 RWD - CONQUEST

1	MD02 3388	1			GASKET, Fuel Pump
2	MD02 3390	1			COVER, Fuel Pump Pad
3	MF14 0022	2			BOLT and WASHER (8x16mm)
4	MD06 2978	1			PUMP, Fuel
5	MD60 4383	1			GASKET
6	MD09 7850	1			HOSE, Fuel
7	MD60 4384	1			WASHER
8	MD60 4392	1			FILTER

ENGINE:		Q=1500 cc	A=2000 cc	TRANS:	A=Automatic	4=4-Speed Manual
Blank=All		K=1600 cc (w/o Balance Shaft)	F=2600 cc (Car)	Blank=All	M=All Manual	5=5-Speed Manual
		W=2600 cc (Truck)				8=4 x 2 Manual
SERIES:	H=High	MODELS: 24 FWD=2-Dr Hatchback (Colt)		27 RWD-4WD=Pickup (Ram 50, Power Ram 50)		
L=Low	P=Premium	24 RWD=2-Dr Hatchback (Conquest)		27 4WD=Sport Utility (Raider) 45 FWD=4-Dr Station Wagon (Colt)		
M=Medium	S=Special	41 FWD=4-Dr Sedan (Colt & Eagle Vista)		45 FWD-4WD=Station Wagon (Vista)		
AR=Use as Required		#=New Part Number	--=Non Illustrated Part		Printed in U.S.A.	FEBRUARY, 1989

7714 5200FUEL LINES
24 RWD - CONQUEST

1987-88 IMPORT PARTS CATALOG

Figure 14-5200
Illus. Page 14-153

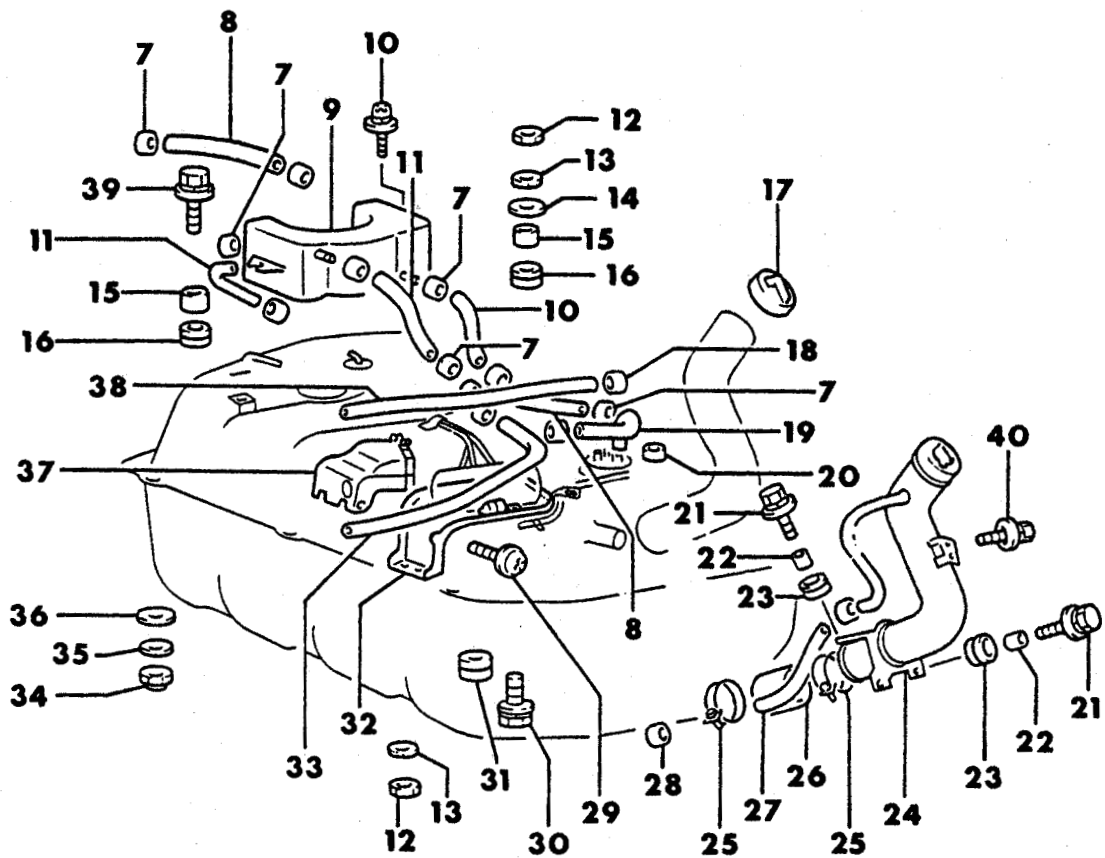
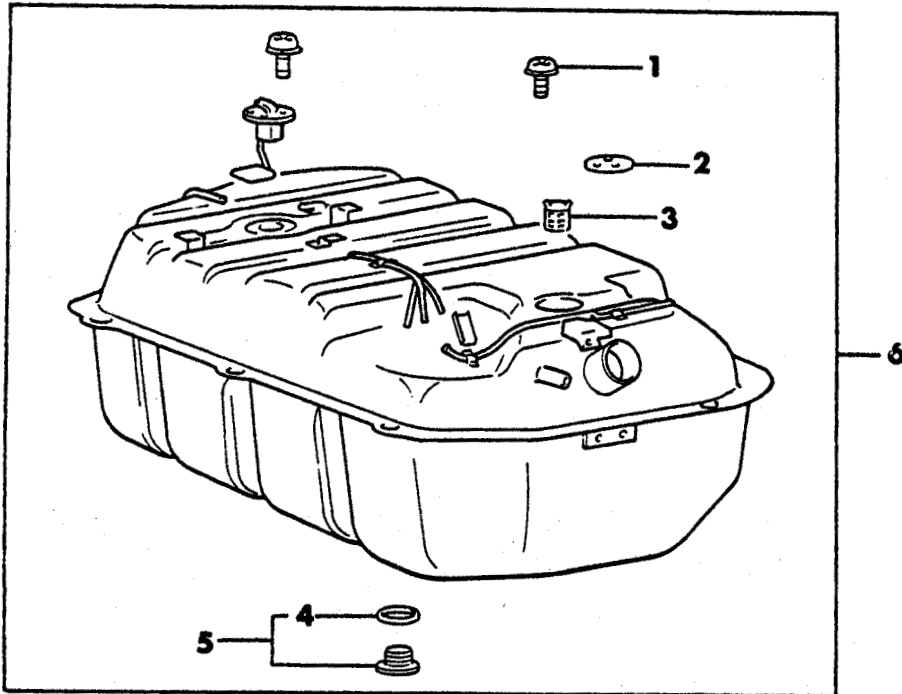
FUEL

ITEM	PART NUMBER	QTY	BODY	MODEL	DESCRIPTION
FUEL LINES					
24 RWD - CONQUEST					
1	MS24 0094	2			BOLT and WASHER (6x12mm)
2	MB18 1583	1			SUPPORT
3	MB18 1580	3			CLIP
4	MB18 1584	1			SUPPORT
5	MS24 0141	5			BOLT and WASHER (6x16mm)
6	MB12 9567	1			PROTECTOR
7	MS66 0175	1			CLIP, Hose, (12.5mm)
8	MB12 9931	11			CLIP, Fuel and Brake Tube
9	MF10 0029	4			BOLT and WASHER (6x22mm)
10	MB12 9884	4			SUPPORT, Clip
11	MB24 7496	1			TUBE
12	MB24 7495	1			TUBE
13	MB05 2983	3			SUPPORT
14	MB12 9999	1			CLIP, Tube

ENGINE:		Q=1500 cc	A=2000 cc	TRANS:		A=Automatic	4=4-Speed Manual
Blank=All		K=1600 cc (w/o Balance Shaft)	F=2600 cc (Car)	Blank=All		M=All Manual	5=5-Speed Manual
		W=2600 cc (Truck)					8=4 x 2 Manual
SERIES:		H=High	MODELS:		24 FWD=2-Dr Hatchback (Colt)	27 RWD-4WD=Pickup (Ram 50, Power Ram 50)	
L=Low		P=Premium			24 RWD=2-Dr Hatchback (Conquest)	27 4WD=Sport Utility (Raider)	45 FWD=4-Dr Station Wagon (Colt)
M=Medium		S=Special			41 FWD=4-Dr Sedan (Colt & Eagle Vista)		45 FWD-4WD=Station Wagon (Vista)
AR=Use as Required		# =New Part Number	- =Non Illustrated Part		Printed in U.S.A.		FEBRUARY, 1989

FUEL TANK
24 RWD CONQUEST

7714 5900



1987-88 IMPORT PARTS CATALOG

Figure 14-5900
Illus. Page 14-173

FUEL

ITEM	PART NUMBER	QTY	BODY	MODEL	DESCRIPTION
FUEL TANK 24 RWD CONQUEST					
1	#MF35 0024	10			SCREW and WASHER (4x10mm)
2	MB12 9548	1			PACKING
3	MB12 9890	1			FILTER, In Fuel Tank
4	MB12 9662	1			PACKING
5	MB12 9660	1			PLUG, Drain
6					TANK, Fuel
	#MB50 3614	1			w/o LCD Meter
	MB50 3615	1			w/LCD Meter 1987
7	MS66 0169	11			CLIP, Hose (10mm)
8	MS62 2599	2			HOSE, Vapor (6x120mm)
9	MB18 1769	1			SEPARATOR, Tank
10	MF35 1488	2			BOLT and WASHER (6x12mm)
11	MB18 1850	1			HOSE, Vapor
12	MF43 0122	4			NUT (6mm)
13	MF45 0404	4			WASHER, Spring (6mm)
14	#MF45 0153	4			WASHER, Plain (6mm)
15	MB04 3435	4			SPACER
16	MB24 7172	1			MOUNT, Rubber
17	MB40 0395	1			CAP, Fuel Tank
18	MS66 0175	1			CLIP, Hose (12.5mm)
19	MB18 1858	1			HOSE, Main
20	MS66 0168	2			CLIP, Hose (17.8mm)
21	#MF24 7223	3			BOLT and WASHER (6x14mm)
22	MB24 7270	3			SPACER
23	MB24 7271	3			DAMPER
24	MB50 4529	1			TUBE, Filler
25	MF66 1028	2			CLAMP, Hose (60mm)
26	MB18 1707	1			HOSE, Filler
27	MS62 3299	1			HOSE, Fuel (12x160mm)
28	MS66 0168	2			CLIP, Hose (17.8mm)
29	MF35 1442	4			SCREW and WASHER (4x10mm)
30	MF24 0050	2			BOLT and WASHER (8x14mm)
31	MB04 3434	2			MOUNT, Rubber
32	MB18 1750	1			SUPPORT, Pump
33	MS62 2599	1			HOSE, Vapor (6x430mm)
34	MF43 0122	7			NUT (10mm)
35	MF45 0406	7			WASHER, Spring (10mm)
36	MF45 0006	7			WASHER, Plain (10mm)
37	MB18 1751	1			PROTECTOR, Fuel Pump
38	MS62 2899	1			HOSE, Fuel (8x400mm)'
39	MF24 7230	2			BOLT and WASHER (6x30)
40	#MS24 0141	2			BOLT and WASHER (6x16mm)

ENGINE:		Q=1500 cc	A=2000 cc	TRANS:	A=Automatic	4=4-Speed Manual
Blank=All		K=1600 cc (w/o Balance Shaft)	F=2600 cc (Car)	Blank=All	M=All Manual	5=5-Speed Manual
		W=2600 cc (Truck)				8=4 x 2 Manual
SERIES:		H=High	MODELS: 24 FWD=2-Dr Hatchback (Colt) 27 RWD=4WD=Pickup (Ram 50, Power Ram 50)			
L=Low		P=Premium	24 RWD=2-Dr Hatchback (Conquest) 27 4WD=Sport Utility (Raider) 45 FWD=4-Dr Station Wagon (Colt)			
M=Medium		S=Special	41 FWD=4-Dr Sedan (Colt & Eagle Vista) 45 FWD=4WD=Station Wagon (Vista)			
AR=Use as Required		# = New Part Number	— = Non Illustrated Part		Printed in U.S.A.	FEBRUARY, 1989