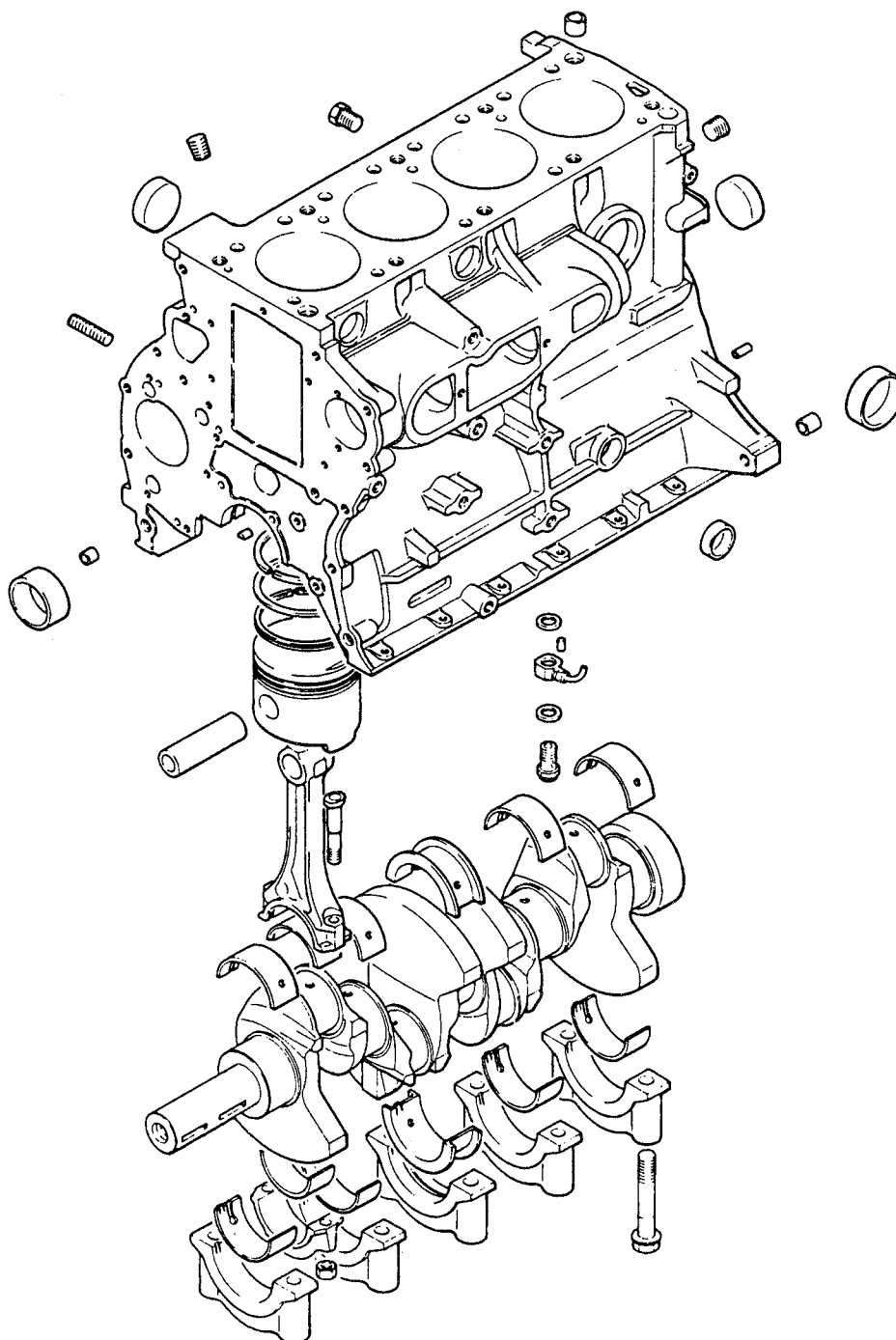


**7758 3500**ENGINE, SHORT  
24RWD,27  
2.6 L ENGINE

# 1987-88 IMPORT PARTS CATALOG

Figure 9A-3500  
Illus. Page 9A-85

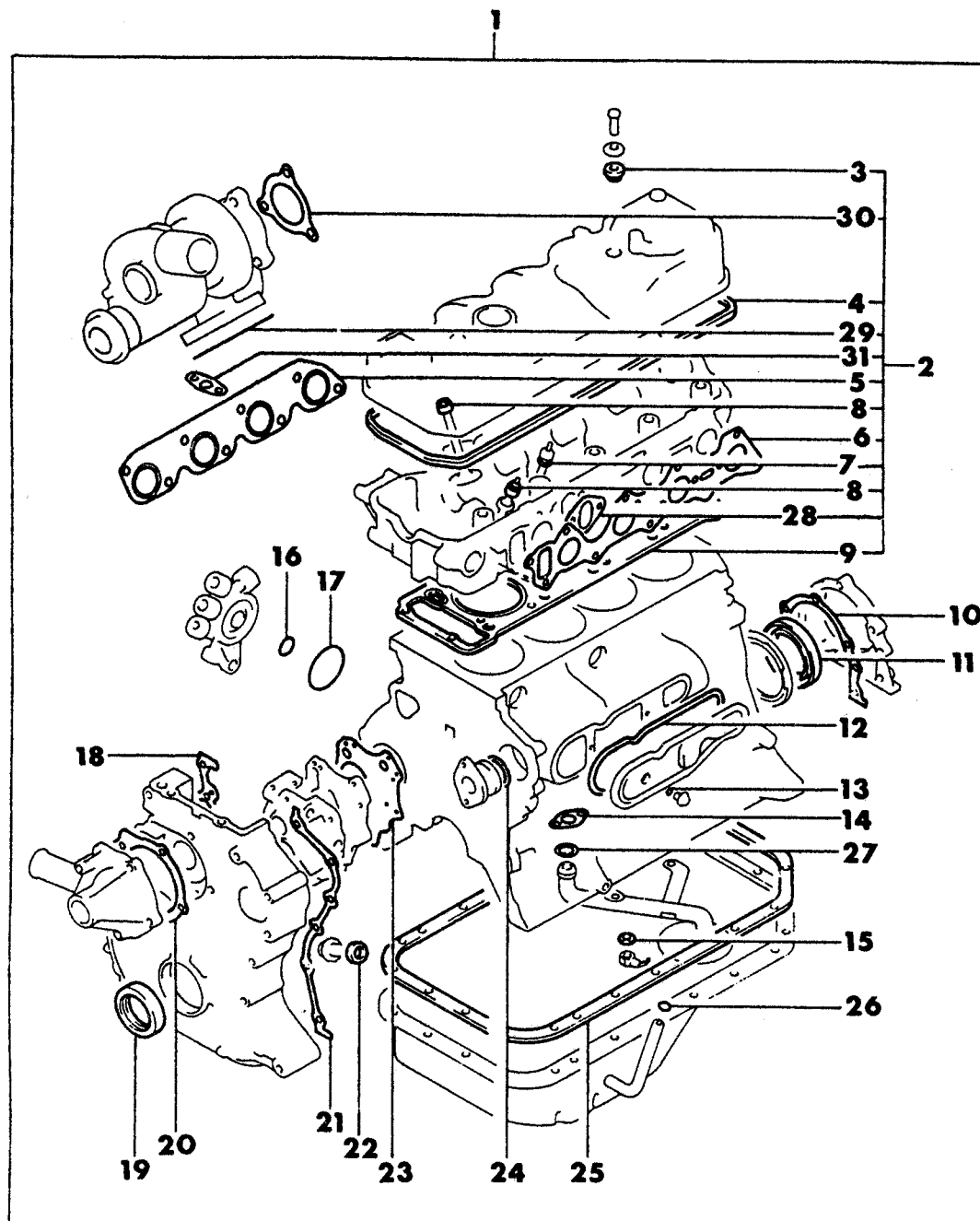
ENGINE, 4 CYLINDER

ITEM	PART NUMBER	QTY	BODY	MODEL	DESCRIPTION
------	-------------	-----	------	-------	-------------

ENGINE, SHORT  
24RWD,27  
2.6 L ENGINE

	MD10 6877	1		24 RWD	ENGINE, Short
	MD07 6673	1		27	

<b>ENGINE:</b>	Q=1500 cc	A=2000 cc	<b>TRANS:</b>	A=Automatic	4=4-Speed Manual
Blank=All	K=1600 cc (w/o Balance Shaft)	F=2600 cc (Car)	Blank=All	M=All Manual	5=5-Speed Manual
	W=2600 cc (Truck)				8=4 x 2 Manual
<b>SERIES:</b>	H=High	<b>MODELS:</b> 24 FWD=2-Dr Hatchback (Colt)		27 RWD-4WD=Pickup (Ram 50, Power Ram 50)	
L=Low	P=Premium	24 RWD=2-Dr Hatchback (Conquest)		27 4WD=Sport Utility (Raider)	45 FWD=4-Dr Station Wagon (Colt)
M=Medium	S=Special	41 FWD=4-Dr Sedan (Colt & Eagle Vista)		45 FWD-4WD=Station Wagon (Vista)	
AR=Use as Required		# =New Part Number	— =Non Illustrated Part		Printed in U.S.A. FEBRUARY, 1989

**7758 3600**GASKET SETS  
24RWD,27  
2.6 L ENGINE

# 1987-88 IMPORT PARTS CATALOG

Figure 9A-3600  
Illus. Page 9A-87

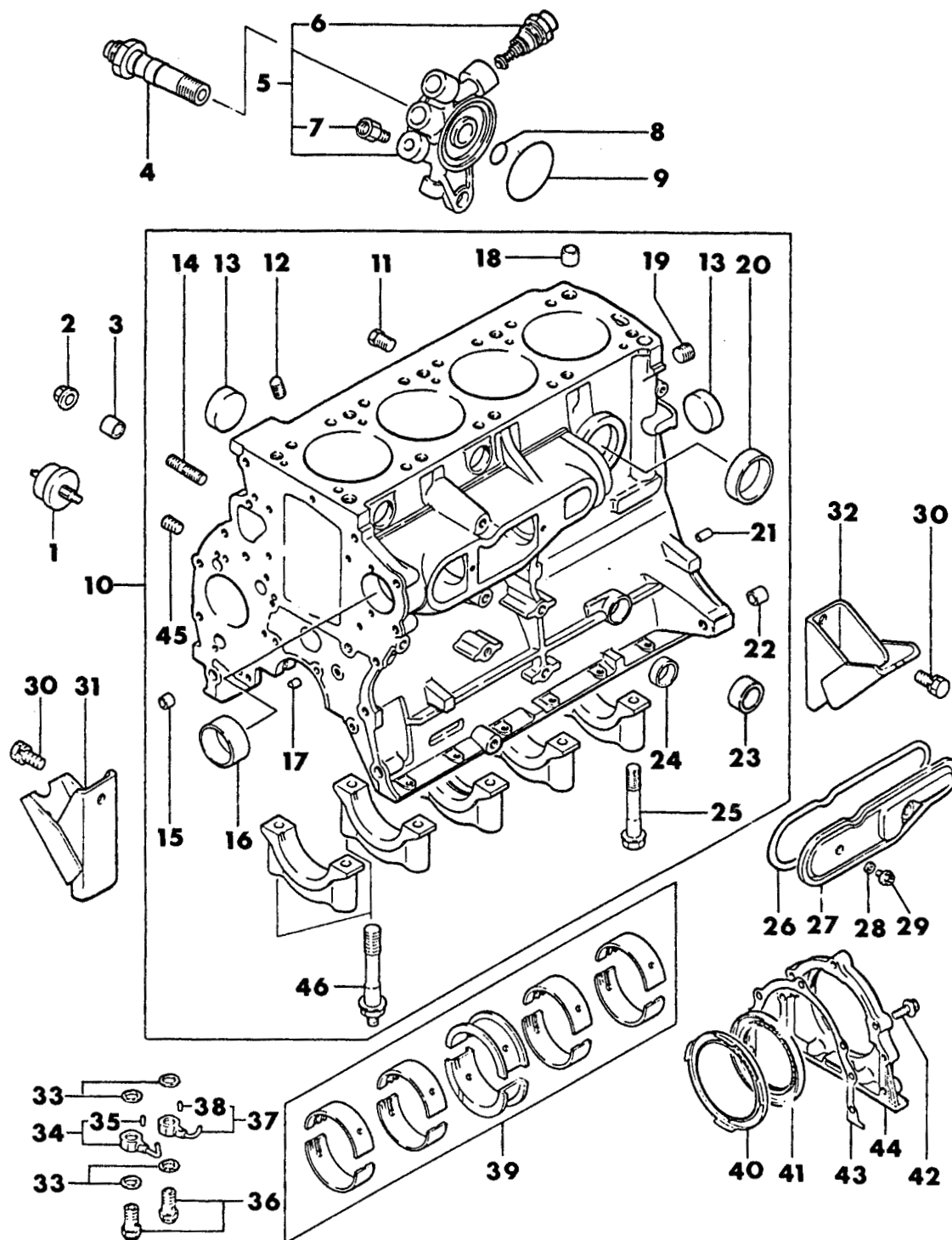
ENGINE, 4 CYLINDER

ITEM	PART NUMBER	QTY	BODY	MODEL	DESCRIPTION
GASKET SETS					
24RWD,27					
2.6 L ENGINE					
1	MD99 7095	1		24 RWD	GASKET SET, Engine Overhaul
	MD99 7049	1		27	
2	MD99 7066	1		24 RWD	GASKET SET, Engine Upper
	MD99 7020	1		27	
3	MD00 0523	2			OIL SEAL, Cylinder Head Cover
4	MD02 4682	1			GASKET, Cylinder Head Cover
5	MD10 2683	1		24 RWD	GASKET, Exhaust Manifold
	MD02 5593	1		27	
6	MD06 0243	1		24 RWD	GASKET, Intake Manifold
	MD02 4628	1		27	
7	MD00 9786	4			O-RING, Jet Valve
8	MD00 0508	4			SEAL, Intake Valve Stem
	MD00 0508	4			SEAL, Exhaust Valve Stem
9	MD02 6654	1			GASKET, Cylinder Head Up to 3/87
	MD11 0383	1			After 3/87
10	MD02 0292	1			GASKET, Crankshaft Rear Oil Seal Case
11	MD06 9947	1			OIL SEAL, Crankshaft Rear
12	MD02 0239	1			GASKET, Balance Shaft Cover
13	MD02 0256	2			O-RING, Balance Shaft Cover
14	MD02 1577	1			GASKET, Oil Pump Pickup Screen
15	MF66 0034	8		24 RWD	GASKET, Oil Jet (12mm)
16	MF52 0015	1		24 RWD	O-RING, Oil Filter Bracket (22mm)
17	MF52 0588	1		24 RWD	O-RING, Oil Filter Bracket (60mm)
18	MD02 0324	1			GASKET, Chain Case Right
19	MD02 0308	1			OIL SEAL, Crankshaft Front
20	MD02 1495	1			GASKET, Water Pump
21	MD02 0325	1			GASKET, Chain Case Left
22	MD05 0317	1			GASKET, Oil Pan Drain Plug (14mm)
	MD00 0312	1		27	(18.2mm) (1988)
23	MD06 0521	1			GASKET, Oil Pump
24	MD02 1045	1			O-RING, Balance Shaft Thrust Plate
25	MD02 0232	1			GASKET, Engine Oil Pan
26	MF52 0004	1			O-RING, Oil Level Indicator Tube (9mm)
27	MD06 8388	1		24 RWD	O-RING, Oil Pump Pickup Screen
28	MD02 3388	2			GASKET, Fuel Pump
29	MD04 1333	1		24 RWD	GASKET, Turbo (A)
30	MD04 1334	1		24 RWD	GASKET, Turbo (B)
31	MD05 0082	1		24RWD	GASKET

<b>ENGINE:</b>		Q=1500 cc	A=2000 cc	<b>TRANS:</b>	A=Automatic	4=4-Speed Manual
Blank=All		K=1600 cc (w/o Balance Shaft)	F=2600 cc (Car)	Blank=All	M=All Manual	5=5-Speed Manual
		W=2600 cc (Truck)				8=4 x 2 Manual
<b>SERIES:</b>		H=High	<b>MODELS:</b> 24 FWD=2-Dr Hatchback (Colt) 27 RWD-4WD=Pickup (Ram 50, Power Ram 50)			
L=Low		P=Premium	24 RWD=2-Dr Hatchback (Conquest) 27 4WD=Sport Utility (Raider) 45 FWD=4-Dr Station Wagon (Colt)			
M=Medium		S=Special	41 FWD=4-Dr Sedan (Colt & Eagle Vista) 45 FWD-4WD=Station Wagon (Vista)			
AR=Use as Required		# = New Part Number	- = Non Illustrated Part		Printed in U.S.A.	FEBRUARY, 1989

7758 3700

CYLINDER BLOCK  
 24RWD  
 2.6 L ENGINE



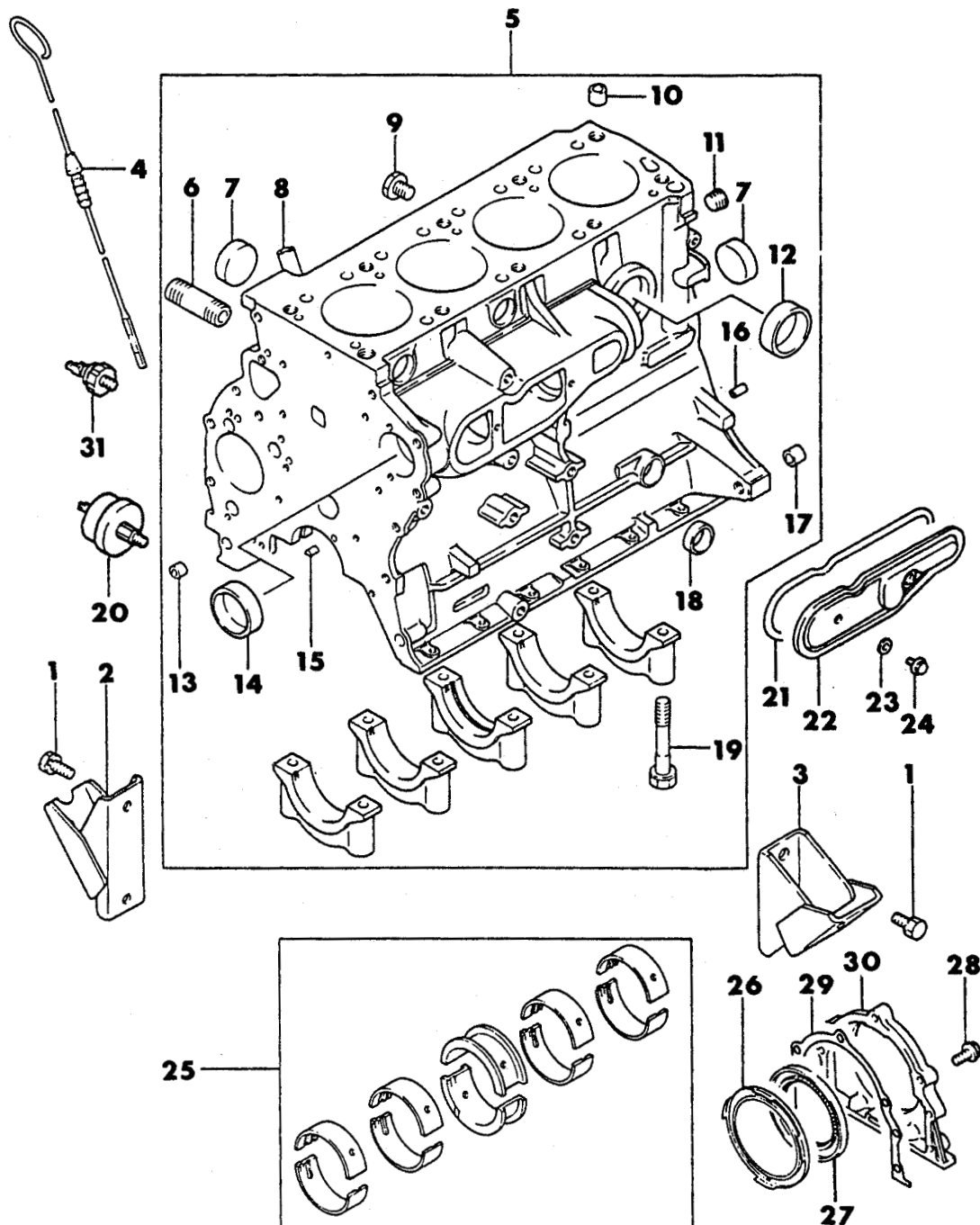
# 1987-88 IMPORT PARTS CATALOG

Figure 9A-3700  
Illus. Page 9A-89

ENGINE, 4 CYLINDER

ITEM	PART NUMBER	QTY	BODY	MODEL	DESCRIPTION
CYLINDER BLOCK					
24RWD					
2.6 L ENGINE					
1	MD09 2660	1			SENDING UNIT, Oil Pressure w/o Intercooler (1987)
	MD00 8428	1			w/Intercooler (1987)
	MD09 2660	1			w/Intercooler (1988)
2	MF43 4105	1			NUT, Flange (10mm)
3	MS47 1111	1			BUSHING, Knock (12x13mm)
4	MD01 1156	1			BOLT, Oil Filter Bracket
5	MD00 0905	1			BRACKET, Oil Filter
6	MD04 1092	1			VALVE, Oil Cooler By-Pass
7	MD05 0533	1			JOINT, Oil Pipe
8	MF52 0015	1			O-RING, Oil Filter Bracket (22mm)
9	MF52 0588	1			O-RING, Oil Filter Bracket (60mm)
10	MD10 3483	1			BLOCK, Cylinder
11	MD00 0269	1			PLUG, Taper (1/4" NPT)
12	MD02 4256	1			PLUG, Taper
13	MD00 0427	3			PLUG, Expansion (40mm) Up to 8/87
	MF66 5542	3			(40mm) After 8/87
14	MS40 1350	1			STUD, (10x25mm)
15	MS47 1104	2			BUSHING, Knock (8x9mm)
16	MD02 1118	2			BEARING, Balance Shaft Rear Std.
	MD08 2303	2			1.00mm O/S
17	MD02 0234	1			NOZZLE, Oil
18	MS47 1111	2			BUSHING, Knock (12x13mm)
19	MS66 1142	1			PLUG, Taper (3/8" NPT)
20	MF66 5544	3			CAP, Sealing (50mm)
21	MF47 2403	2			PIN, Dowel (6mm)
22	MD02 0260	2			BUSHING, Knock (10mm)
23	MD02 6203	1			CAP, Sealing
24	MF66 5539	4			CAP, Sealing (28mm)
25	MD02 0223	8			BOLT, Crankshaft Main Bearing Cap
26	MD02 0239	1			GASKET, Balance Shaft Cover
27	MD02 0237	1			COVER, Balance Shaft
28	MD02 0256	2			O-RING, Balance Shaft Cover
29	MF14 0003	2			BOLT, Flange (6x12mm)
30	MS24 0216	4			BOLT and WASHER, (10x20mm)
31	MD01 6233	1			BRACKET, Engine Support Right
32	MD01 2775	1			BRACKET, Engine Support Left
33	MF66 0034	8			GASKET, Oil Jet (12mm)
34	MD10 4202	2			JET, Oil
35	MF47 2549	2			PIN, Spring (4x10mm)
36	MD05 0249	4			VALVE, Oil Jet Check
37	MD10 4203	2			JET, Oil
38	MF47 2549	2			PIN, Spring (4x10mm)
39	MD02 6815	1			BEARING SET, Crankshaft Main Standard
40	MD02 0436	1			SEPARATOR, Crankshaft Rear Seal Oil
41	MD06 9947	1			OIL SEAL, Crankshaft Rear
42	MF14 0207	5			BOLT, Flange (6x20mm)
43	MD02 0292	1			GASKET, Crankshaft Rear Oil Seal Case
44	MD02 4509	1			CASE, Crankshaft Rear Oil Seal
45	MS66 1140	1			PLUG, Taper (1/8" NPT)
46	MD01 2069	2			BOLT, Crankshaft Main Bearing Cap

<b>ENGINE:</b>	Q=1500 cc	A=2000 cc	<b>TRANS:</b>	A=Automatic	4=4-Speed Manual
Blank=All	K=1600 cc (w/o Balance Shaft)	F=2600 cc (Car)	Blank=All	M=All Manual	5=5-Speed Manual
	W=2600 cc (Truck)				8=4 x 2 Manual
<b>SERIES:</b>	H=High	<b>MODELS:</b> 24 FWD=2-Dr Hatchback (Colt) 27 RWD-4WD=Pickup (Ram 50, Power Ram 50)			
L=Low	P=Premium	24 RWD=2-Dr Hatchback (Conquest) 27 4WD=Sport Utility (Raider) 45 FWD=4-Dr Station Wagon (Colt)			
M=Medium	S=Special	41 FWD=4-Dr Sedan (Colt & Eagle Vista) 45 FWD-4WD=Station Wagon (Vista)			
AR=Use as Required		# =New Part Number	- =Non Illustrated Part		Printed in U.S.A. FEBRUARY, 1989

**7758 3800**CYLINDER BLOCK  
27  
2.6 L ENGINE

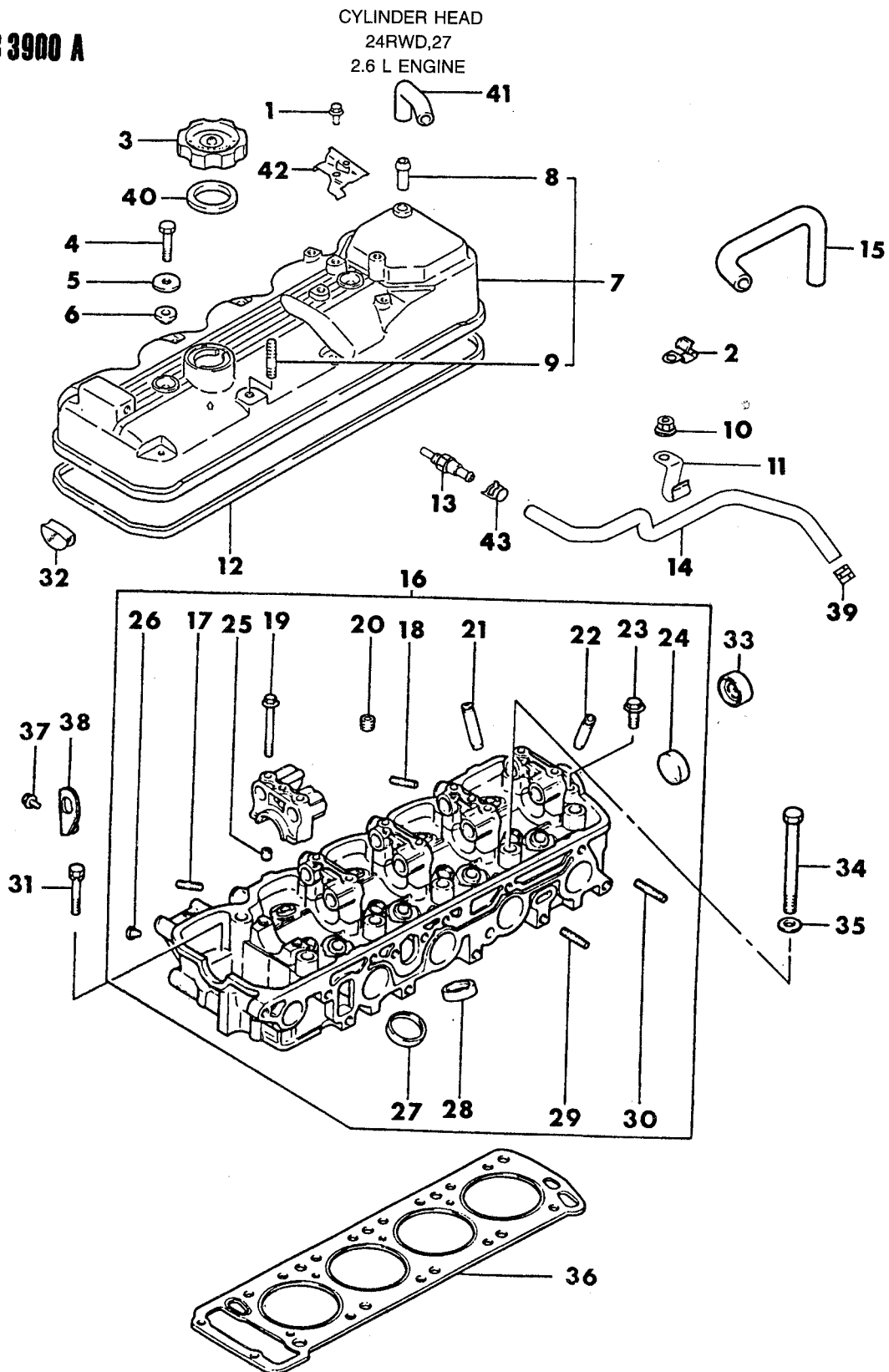
# 1987-88 IMPORT PARTS CATALOG

Figure 9A-3800  
Illus. Page 9A-91

ENGINE, 4 CYLINDER

ITEM	PART NUMBER	QTY	BODY	MODEL	DESCRIPTION
CYLINDER BLOCK					
27					
2.6 L ENGINE					
1	MF24 1280	4		27	BOLT and WASHER, (10x20mm)
	MS24 0216	4		RAIDER	
2	MD02 0233	1		27	BRACKET, Engine Support Right
	MD01 6233	1		RAIDER	
3	MD02 0291	1		27	BRACKET, Engine Support Left
	MD01 2775	1		RAIDER	
4	MD02 0257	1		27 RWD	INDICATOR, Engine Oil Level
	MD02 6498	1		27 4WD	
	MD02 4375	1		RAIDER	Up to 4/88
	MD13 9705	1		RAIDER	After 4/88
5	MD02 4366	1			BLOCK, Cylinder
6	MD02 0235	1			STUD, Oil Filter
7	MD00 0427	3			PLUG, Expansion (40mm) Up to 8/87
	MF66 5542	3			(40mm) After 8/87
8	MD02 0226	1			TUBE, Oil Level Indicator
9	MD00 0269	1			PLUG, Taper (1/4" NPT)
10	MS47 1111	2			BUSHING, Knock (12x13mm)
11	MS66 1142	1			PLUG, Taper (3/8" NPT)
12	MF66 5544	3			CAP, Sealing (50mm)
13	MS47 1104	2			BUSHING, Knock (8x9mm)
14	MD02 1118	2			BEARING, Balance Shaft Rear Standard
	MD08 2303	2			1.00mm O/S
15	MD02 0234	1			NOZZLE, Oil
16	MF47 2403	2			PIN, Dowel (6mm)
17	MD02 0260	2			BUSHING, Knock (10mm)
18	MF66 5539	4			CAP, Sealing (28mm)
19	MD02 0223	10			BOLT, Crankshaft Main Bearing Cap
20	MD09 2660	1			SENDING UNIT, Oil Pressure
21	MD02 0239	1			GASKET, Balance Shaft Cover
22	MD02 0237	1			COVER, Balance Shaft
23	MD02 0256	2			O-RING, Balance Shaft Cover
24	MF14 0003	2			BOLT, Flange (6x12mm)
25	MD02 6815	1			BEARING SET, Crankshaft Standard
	MD02 6816	1			0.25mm U/S
	MD02 6817	1			0.50mm U/S
	MD02 6818	1			0.75mm U/S
26	MD02 0436	1			SEPERATOR, Crankshaft Rear Seal Oil
27	MD06 9947	1			OIL SEAL, Crankshaft Rear
28	MF14 0207	5			BOLT, Flange (6x20mm)
29	MD02 0292	1			GASKET, Crankshaft Rear Oil Seal Case
30	MD02 4509	1			CASE, Crankshaft Rear Oil Seal
31	MD00 1482	1			SWITCH, Oil Pressure

<b>ENGINE:</b>		Q=1500 cc	A=2000 cc	<b>TRANS:</b>	A=Automatic	4=4-Speed Manual
Blank=All		K=1600 cc (w/o Balance Shaft)	F=2600 cc (Car)	Blank=All	M=All Manual	5=5-Speed Manual
		W=2600 cc (Truck)				8=4 x 2 Manual
<b>SERIES:</b>	H=High	<b>MODELS:</b> 24 FWD=2-Dr Hatchback (Colt)		27 RWD-4WD=Pickup (Ram 50, Power Ram 50)		
L=Low	P=Premium	24 RWD=2-Dr Hatchback (Conquest)		27 4WD=Sport Utility (Raider)	45 FWD=4-Dr Station Wagon (Colt)	
M=Medium	S=Special	41 FWD=4-Dr Sedan (Colt & Eagle Vista)			45 FWD-4WD=Station Wagon (Vista)	
AR=Use as Required		#=New Part Number	--=Non Illustrated Part		Printed in U.S.A.	FEBRUARY, 1989

**7758 3900 A**

# 1987-88 IMPORT PARTS CATALOG

Figure 9A-3900  
Illus. Page 9A-93

ENGINE, 4 CYLINDER

ITEM	PART NUMBER	QTY	BODY	MODEL	DESCRIPTION
CYLINDER HEAD					
24RWD,27					
2.6 L ENGINE					
1	MB52 7239	1		24 RWD	BOLT, Flange (8x12mm) (1987)
	MF14 0641	1		24 RWD	(8x12mm) (1988)
	MF14 0202	1		27	(6x10mm) (1987)
	MF14 0722	1		27	(6x10mm) (1988)
2	MD07 4014	1		24 RWD	CLAMP, Accelerator Wire
	MD10 9362	1		27	
3	MD00 8784	1			CAP, Oil Filler Up to 4/88
	MD13 2260	1			After 4/88
4	MF10 3663	2			BOLT, (8x40mm) Up to 8/87
	MF10 5463	2			(8x40mm) After 8/87
5	MD00 0522	2			WASHER, Up to 8/87
	MD12 6097	2			After 8/87
6	MD00 0523	2			OIL SEAL, Cylinder Head Cover
7	MD06 1238	1		24 RWD	COVER, Cylinder Head
	MD02 6601	1		27	
	MD06 1238	1		RAIDER	
8	MD02 6618	1			PIPE, Breather
9	MF40 1933	1		24 RWD	STUD, (8x18mm) Up to 8/87
	MF40 2233	1		24 RWD	(8x18mm) After 8/87
	MF40 1933	2		27	Up to 8/87
	MF40 2233	2		27	After 8/87
	MF40 1933	1		RAIDER	Up to 8/87
	MF40 2233	1		RAIDER	After 8/87
10	MF43 4104	1		24 RWD	NUT, Flange (8mm)
11	MD02 4869	1			CLIP, PCV Hose Up to 3/87
	MD12 5717	1			After 3/87
12	MD02 4682	1			GASKET, Cylinder Head Cover
13	MD02 4719	1			VALVE, PCV
14	MD02 6609	1			HOSE, PCV Valve
15	MD10 3299	1		27	HOSE, Breather
16	MD08 4427	1		24 RWD	HEAD, Cylinder (1987)
	MD12 5378	1		24 RWD	(1988)
	MD02 6510	1		27	
17	MD03 1537	3			STUD, (8x28mm)
18	MD03 1537	5			STUD, (8x28mm)
19	MD02 0566	10			BOLT, Flange
20	MD02 2295	1			PLUG, Taper (1/4" NPT)
21	MD02 0561	4			GUIDE, Exhaust Valve 0.05mm O/S
	MD02 0562	4			0.25mm O/S
	MD02 0563	4			0.50mm O/S
22	MD02 0551	4			GUIDE, Intake Valve 0.05mm O/S
	MD02 0552	4			0.25mm O/S
	MD02 0553	4			0.50mm O/S
23	MS10 0941	2			BOLT, Flange (8x25mm)
24	MD00 0427	1			PLUG, Expansion (40mm)
25	MS47 1104	10			BUSHING, Knock (8x9mm)
26	MD00 0429	1			PLUG, Taper (1/16" NPT)
27	MD02 6514	4			SEAT, Intake Valve 0.30mm O/S
	MD02 6515	4			0.60mm O/S
28	MD02 6517	4			SEAT, Exhaust Valve 0.30mm O/S
	MD02 6518	4			0.60mm O/S

<b>ENGINE:</b>	Q=1500 cc	A=2000 cc	<b>TRANS:</b>	A=Automatic	4=4-Speed Manual
Blank=All	K=1600 cc (w/o Balance Shaft)	F=2600 cc (Car)	Blank=All	M=All Manual	5=5-Speed Manual
	W=2600 cc (Truck)				8=4 x 2 Manual

<b>SERIES:</b>	H=High	<b>MODELS:</b>	24 FWD=2-Dr Hatchback (Colt)	27 RWD=4WD=Pickup (Ram 50, Power Ram 50)
L=Low	P=Premium		24 RWD=2-Dr Hatchback (Conquest)	27 4WD=Sport Utility (Raider)
M=Medium	S=Special		41 FWD=4-Dr Sedan (Colt & Eagle Vista)	45 FWD=4-Dr Station Wagon (Colt)
				45 FWD=4-Dr Station Wagon (Vista)

AR=Use as Required

# =New Part Number

— =Non Illustrated Part

Printed in U.S.A.

FEBRUARY, 1989

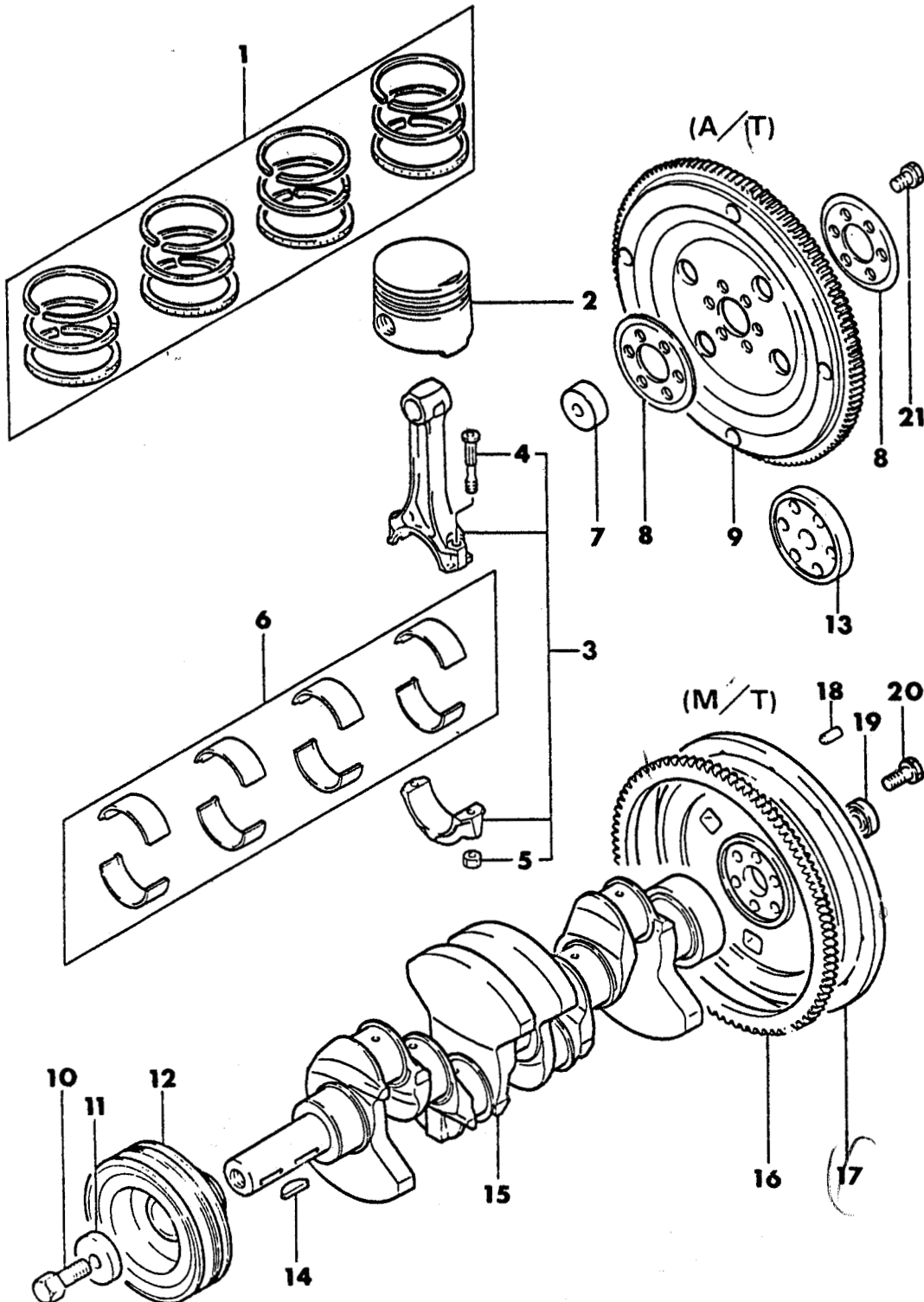
# 1987-88 IMPORT PARTS CATALOG

Figure 9A-3900  
Illus. Page 9A-94

ENGINE, 4 CYLINDER

ITEM	PART NUMBER	QTY	BODY	MODEL	DESCRIPTION
CYLINDER HEAD					
24RWD,27					
2.6 L ENGINE					
29	MS40 1428	6			STUD, (8x28mm)
30	MS40 1428	4		24 RWD	STUD, (8x28mm)
	MS40 1428	6		27	
31	MS24 1076	2			BOLT and WASHER, (8x50mm)
32	MD02 0718	1			PACKING, Semi-Circular
33	MD07 2821	1			PACKING, Circular
34	MD02 0730	10			BOLT, Cylinder Head
35	MD02 0733	10			WASHER, Cylinder Head Bolt
36	MD02 6654	1			GASKET, Cylinder Head Up to 3/87
	MD11 0383	1			After 3/87
37	MF14 0222	1		24 RWD	BOLT, Flange (8x14mm)
38	MD00 0255	1		24 RWD	HANGER, Engine Front
39	MS66 0175	2		24 RWD,27	CLAMP, PCV Hose (13.1mm)
	MS66 0175	1		RAIDER	
40	MD10 3148	1			PACKING, Oil Filler Cap
41	MD10 1099	1		RAIDER	HOSE, Breather
42	MD10 9428	1		RAIDER	CLAMP, Accelerator Wire
43	MS66 0240	2			CLIP, Hose

<b>ENGINE:</b>		Q=1500 cc	A=2000 cc	<b>TRANS:</b>	A=Automatic	4=4-Speed Manual
Blank=All		K=1600 cc (w/o Balance Shaft)	F=2600 cc (Car)	Blank=All	M=All Manual	5=5-Speed Manual
		W=2600 cc (Truck)				8=4 x 2 Manual
<b>SERIES:</b>	H=High	<b>MODELS:</b>		24 FWD=2-Dr Hatchback (Colt)	27 RWD-4WD=Pickup (Ram 50, Power Ram 50)	
L=Low	P=Premium			24 RWD=2-Dr Hatchback (Conquest)	27 4WD=Sport Utility (Raider)	45 FWD=4-Dr Station Wagon (Colt)
M=Medium	S=Special			41 FWD=4-Dr Sedan (Colt & Eagle Vista)		45 FWD-4WD=Station Wagon (Vista)
AR=Use as Required		# = New Part Number	- = Non Illustrated Part		Printed in U.S.A.	FEBRUARY, 1989

**7758 4000**CRANKSHAFT & PISTONS  
24RWD,27  
2.6 L ENGINE

# 1987-88 IMPORT PARTS CATALOG

Figure 9A-4000  
Illus. Page 9A-97

ENGINE, 4 CYLINDER

ITEM	PART NUMBER	QTY	BODY	MODEL	DESCRIPTION
CRANKSHAFT & PISTONS					
24RWD,27					
2.6 L ENGINE					
1	MD06 1258	1			RING SET, Piston Standard
	MD06 1259	1			0.25mm O/S
	MD06 1260	1			0.50mm O/S
	MD06 1261	1			0.75mm O/S
	MD06 1262	1			1.00mm O/S
2	MD06 1248	4		24 RWD	PISTON and PIN, Standard (1987)
	MD12 8450	4		24 RWD	Standard (1988)
	MD06 1250	4		24 RWD	0.25mm O/S (1987)
	MD12 8456	4		24 RWD	0.25mm O/S (1988)
	MD06 1251	4		24 RWD	0.50mm O/S (1987)
	MD12 8457	4		24 RWD	0.50mm O/S (1988)
	MD06 1252	4		24 RWD	0.75mm O/S (1987)
	MD12 8458	4		24 RWD	0.75mm O/S (1988)
	MD06 1253	4		24 RWD	1.00mm O/S (1987)
	MD12 8459	4		24 RWD	1.00mm O/S (1988)
	MD07 1172	4		27	Standard
	MD07 1174	4		27	0.25mm O/S
	MD07 1175	4		27	0.50mm O/S
	MD07 1176	4		27	0.75mm O/S
	MD07 1177	4		27	1.00mm O/S
3	MD06 2165	4		24 RWD	ROD, Connecting
	MD02 0855	4		27	
4	MD02 1105	8			BOLT, Connecting Rod
5	MD00 6704	8			NUT, Connecting Rod
6	MD02 6430	1		24 RWD	BEARING SET, Connecting Rod Standard (1987)
	MD10 9275	1		24 RWD	Standard (1988)
	MD02 6430	1		27	Standard
	MD02 6431	1		27	0.25mm U/S
	MD02 6432	1		27	0.50mm U/S
	MD02 6433	1		27	0.75mm U/S
7	MD71 2996	1		24 RWD	BUSHING, Crankshaft w/Automatic Trans.
8	MD95 2138	2		24 RWD	PLATE, Adapter w/Automatic Trans.
	MD95 2195	1		27	
9	MD71 2994	1		24 RWD	PLATE, Drive w/Automatic Trans. (1987)
	MD72 6131	1		24 RWD	w/Automatic Trans. (1988)
	MD70 0857	1		27	
10	MD02 0830	1			BOLT, Crankshaft Pulley
11	MD02 0831	1			WASHER, Crankshaft Pulley
12	MD10 9011	1		27	PULLEY, Crankshaft
	MD09 4106	1		24 RWD	(1987)
	MD11 6406	1		24 RWD	(1988)
	MD07 4403	1		RAIDER	
13	MD02 0982	1		27	ADAPTER, Crankshaft w/Automatic Trans.
14	MD00 0606	2			KEY, Woodruff
15	MD02 7474	1		24 RWD	CRANKSHAFT
	MD02 6408	1		27	
	MD00 5994	1		24 RWD	PIN, Flywheel Centering w/Manual Trans. (1988)
16	MD02 4812	1			GEAR, Flywheel Ring w/Manual Transmission
17	MD02 6786	1		24 RWD	FLYWHEEL, w/Manual Transmission (1987)
	MD11 9905	1		24 RWD	w/Manual Transmission (1988)
	MD02 6786	1		27	w/Manual Trans.

**ENGINE:** Q=1500 cc A=2000 cc **TRANS:** A=Automatic 4=4-Speed Manual  
Blank=All K=1600 cc (w/o Balance Shaft) F=2600 cc (Car) Blank=All M=All Manual 5=5-Speed Manual  
W=2600 cc (Truck) 8=4 x 2 Manual

**SERIES:** H=High **MODELS:** 24 FWD=2-Dr Hatchback (Colt) 27 RWD-4WD=Pickup (Ram 50, Power Ram 50)  
L=Low P=Premium 24 RWD=2-Dr Hatchback (Conquest) 27 4WD=Sport Utility (Raider) 45 FWD=4-Dr Station Wagon (Colt)  
M=Medium S=Special 41 FWD=4-Dr Sedan (Colt & Eagle Vista) 45 FWD-4WD=Station Wagon (Vista)

AR=Use as Required

# =New Part Number

—=Non Illustrated Part

Printed in U.S.A.

FEBRUARY, 1989

# 1987-88 IMPORT PARTS CATALOG

Figure 9A-4000  
Illus. Page 9A-98

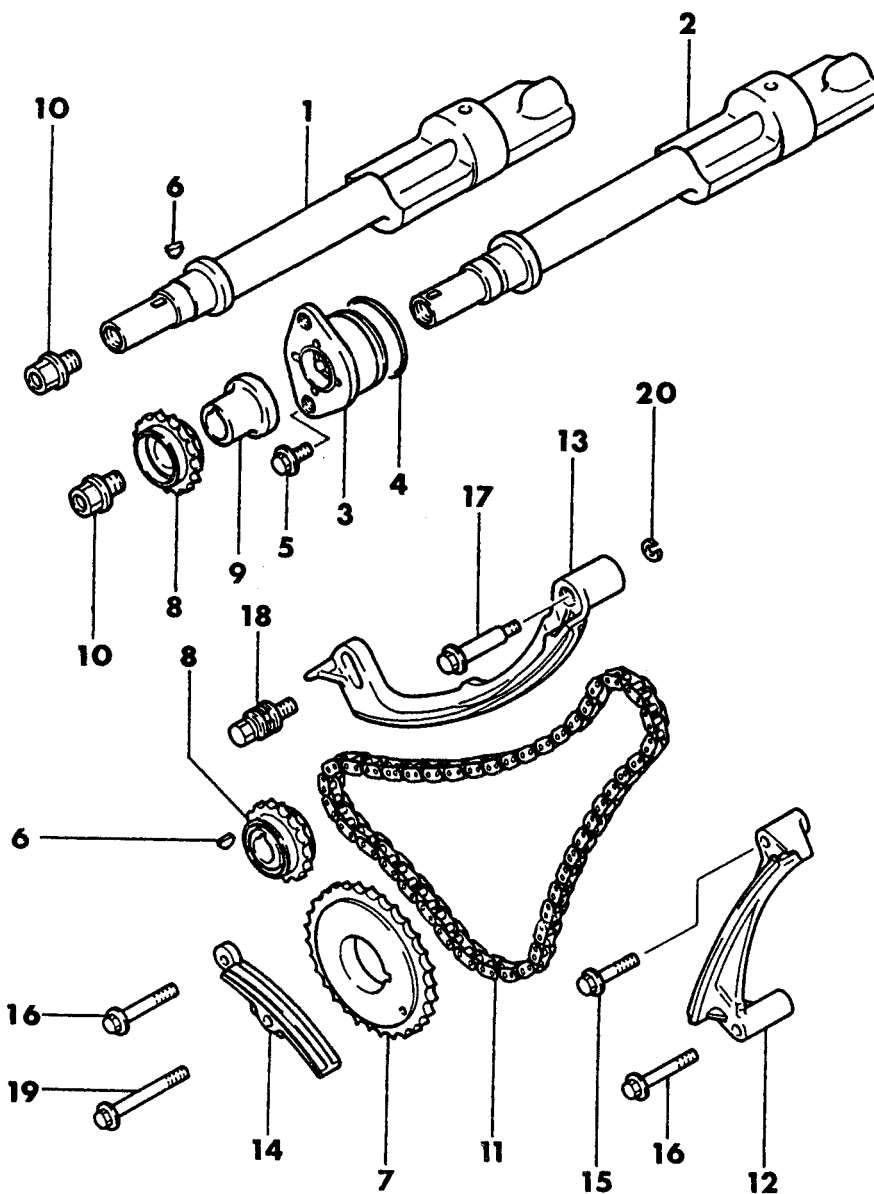
ENGINE, 4 CYLINDER

ITEM	PART NUMBER	QTY	BODY	MODEL	DESCRIPTION
CRANKSHAFT & PISTONS					
24RWD,27					
2.6 L ENGINE					
18	MF47 2404	3			PIN, Dowel w/Manual Transmission (8mm)
19	MD00 2613	1			BEARING, Crankshaft Pilot w/Manual Transmission
20	MD03 1605	6			BOLT, Flywheel w/Manual Transmission
21	MD95 2233	6		24 RWD	BOLT, Drive Plate w/Automatic Trans.
	MD95 2234	6		27	

<b>ENGINE:</b>		Q=1500 cc	A=2000 cc	<b>TRANS:</b>	A=Automatic	4=4-Speed Manual
Blank=All		K=1600 cc (w/o Balance Shaft)	F=2600 cc (Car)	Blank=All	M=All Manual	5=5-Speed Manual
		W=2600 cc (Truck)				8=4 x 2 Manual
<b>SERIES:</b>	H=High	<b>MODELS:</b> 24 FWD=2-Dr Hatchback (Colt)		27 RWD-4WD=Pickup (Ram 50, Power Ram 50)		
L=Low	P=Premium	24 RWD=2-Dr Hatchback (Conquest)		27 4WD=Sport Utility (Raider) 45 FWD=4-Dr Station Wagon (Colt)		
M=Medium	S=Special	41 FWD=4-Dr Sedan (Colt & Eagle Vista)		45 FWD-4WD=Station Wagon (Vista)		
AR=Use as Required		# =New Part Number	- =Non Illustrated Part		Printed in U.S.A. FEBRUARY, 1989	

77584100 A

BALANCE SHAFTS  
24RWD,27  
2.6 L ENGINE



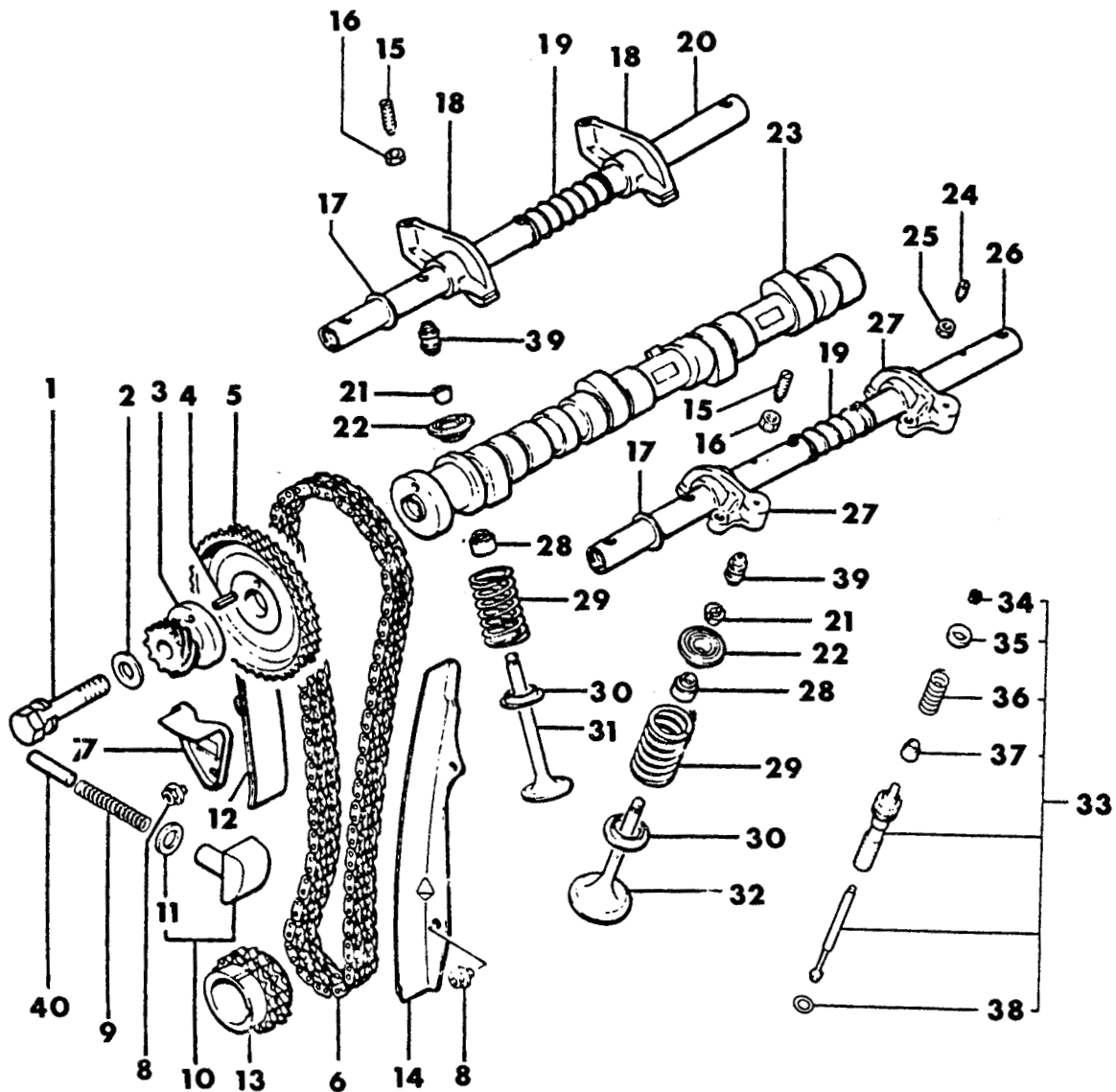
# 1987-88 IMPORT PARTS CATALOG

Figure 9A-4100  
Illus. Page 9A-101

ENGINE, 4 CYLINDER

ITEM	PART NUMBER	QTY	BODY	MODEL	DESCRIPTION
BALANCE SHAFTS					
24RWD,27					
2.6 L ENGINE					
1	MD02 4845	1			SHAFT, Balance Right
2	MD02 4846	1			SHAFT, Balance Left
3	#MD09 4360	1			PLATE, Thrust
4	MD02 1045	1			O-RING, Balance Shaft Thrust Plate
5	MF14 0204	2			BOLT, Flange (6x14mm)
6	MF47 6204	3			KEY, Woodruff (3x10mm)
7	MD02 1170	1			SPROCKET, Crankshaft Balance Shaft Chain
8	MD02 1172	2			SPROCKET, Balance Shaft
9	MD02 0255	1			SPACER, Balance Shaft Sprocket
10	MD02 7152	2			BOLT, Flange (10x15mm)
11	MD02 1155	1			CHAIN, Balance Shaft
12	MD02 1111	1			GUIDE, Balance Shaft Chain (A)
13	MD02 1156	1			GUIDE, Balance Shaft Chain (B)
14	MD02 1114	1			GUIDE, Balance Shaft Chain (C)
15	MS10 1317	1			BOLT, Flange (6x32mm)
16	MS10 1322	2			BOLT, Flange (6x45mm)
17	MD02 1157	1			BOLT, Special (A)
18	MD02 1158	1			BOLT, Special (B)
19	MS10 1325	1			BOLT, Flange (6x60mm)
20	MF45 0404	1			WASHER, Spring (6mm)

<b>ENGINE:</b>		Q=1500 cc	A=2000 cc	<b>TRANS:</b>	A=Automatic	4=4-Speed Manual
Blank=All		K=1600 cc (w/o Balance Shaft)	F=2600 cc (Car)	Blank=All	M=All Manual	5=5-Speed Manual
		W=2600 cc (Truck)				8=4 x 2 Manual
<b>SERIES:</b>	H=High	<b>MODELS:</b> 24 FWD=2-Dr Hatchback (Colt)		27 RWD-4WD=Pickup (Ram 50, Power Ram 50)		
L=Low	P=Premium	24 RWD=2-Dr Hatchback (Conquest)		27 4WD=Sport Utility (Raider) 45 FWD=4-Dr Station Wagon (Colt)		
M=Medium	S=Special	41 FWD=4-Dr Sedan (Colt & Eagle Vista)		45 FWD-4WD=Station Wagon (Vista)		
AR=Use as Required		# = New Part Number	- = Non Illustrated Part	Printed in U.S.A. FEBRUARY, 1989		

CAMSHAFT & VALVES  
24RWD,27  
2.6 L ENGINE**7758 4200**

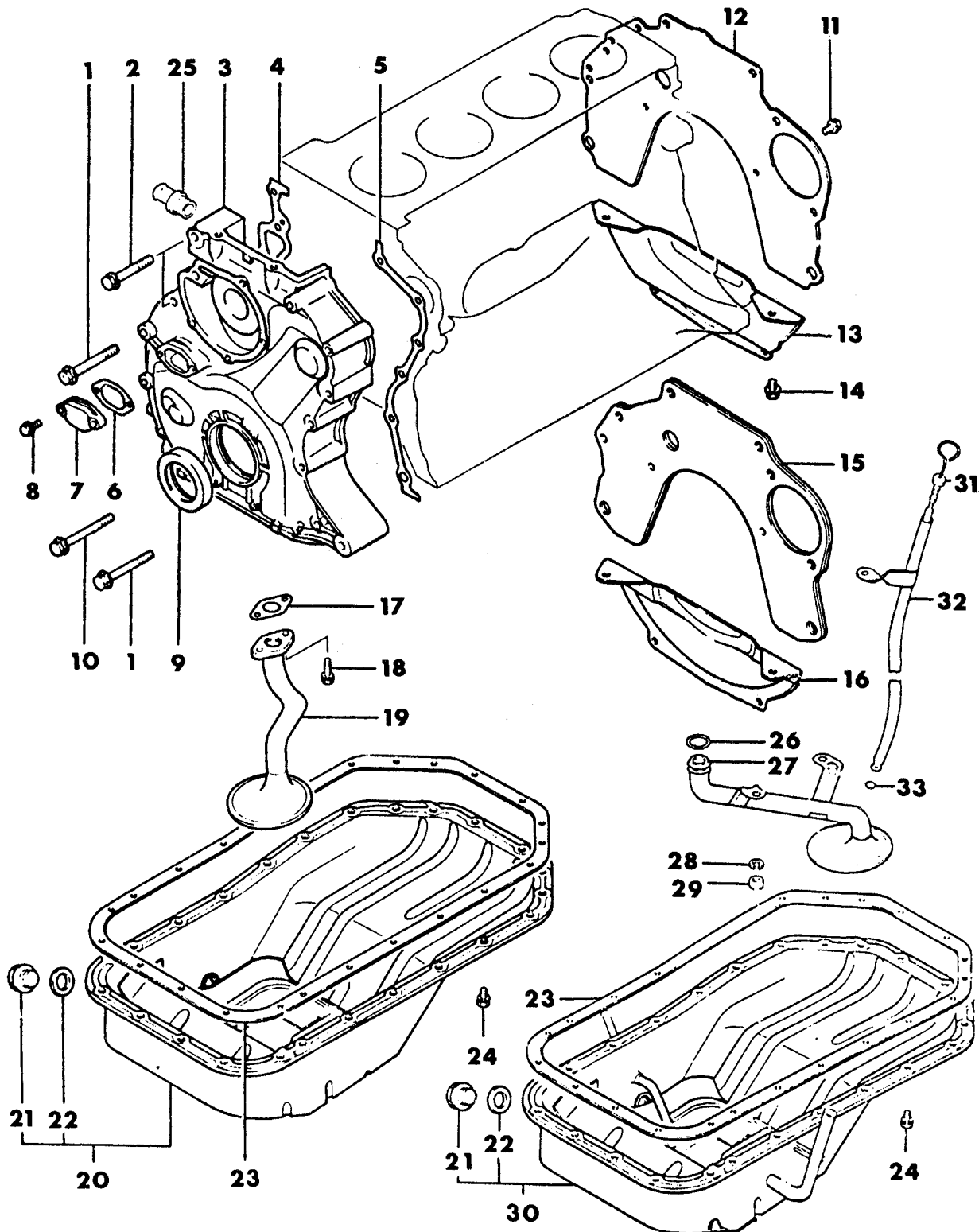
# 1987-88 IMPORT PARTS CATALOG

Figure 9A-4200  
Illus. Page 9A-103

ENGINE, 4 CYLINDER

ITEM	PART NUMBER	QTY	BODY	MODEL	DESCRIPTION
CAMSHAFT & VALVES					
24RWD,27					
2.6 L ENGINE					
1	MS24 1117	1			BOLT and WASHER, (14x70mm)
2	MF45 0008	1			WASHER, Plain (14mm)
3	MD02 1247	1			GEAR, Distributor Drive
4	MD02 1219	1			PIN, Spring (6x18mm)
5	MD02 1246	1			SPROCKET, Camshaft Timing Chain
6	MD02 1230	1			CHAIN, Timing
7	MD02 1237	1			HOLDER, Camshaft Sprocket
8	MS10 1311	4			BOLT, Flange (6x10mm)
9	MD02 2235	1			SPRING, Tensioner
10	MD02 1233	1			SLEEVE, Timing Chain Tension
11	MD02 1242	1			SHEET, Rubber
12	MD02 1231	1			GUIDE, Timing Chain Loose Side
13	MD02 0843	1			SPROCKET, Crankshaft Timing Chain
14	MD02 1232	1			GUIDE, Timing Chain Tension Side
15	MD06 5628	8		24 RWD	SCREW, Rocker Arm Adjusting
16	MD00 0961	8		24 RWD	NUT, Rocker Arm Adjusting Screw Lock
17	MD00 0964	2			WASHER, Waved
18	MD07 2118	4			ARM, Exhaust Rocker
19	MD02 1211	6			SPRING, Rocker Shaft
20	MD00 2923	1			SHAFT, Exhaust Rocker (Right)
21	MD06 1895	16			LOCK, Valve Spring Retainer
22	MD06 6498	8			RETAINER, Valve Spring
23	MD07 7306	1			CAMSHAFT
24	MD00 9371	4			SCREW, Rocker Arm Jet Valve Adjusting
25	MD00 9372	4			NUT, Rocker Arm Jet Valve Adjusting Screw Lock
26	MD02 3196	1			SHAFT, Intake Rocker (Left) (1987)
	MD00 2922	1			(Left) (1988)
27	MD07 2116	4			ARM, Intake Rocker
28	MD00 0508	4			SEAL, Intake Valve Stem
	MD00 0508	4			Exhaust Valve Stem
29	MD07 3398	8			SPRING, Valve
30	MD00 0507	8			SEAT, Valve Spring
31	MD08 3851	4			VALVE, Exhaust
	MD09 4619	4		24 RWD	w/Intercooler & Manual Trans. (1987)
	MD09 2999	4		24 RWD	w/Intercooler Manual and Auto Trans. (1988)
32	MD08 3848	4			VALVE, Intake
33	MD00 9440	4			VALVE, Jet
34	MD00 9365	8			LOCK, Jet Valve Spring Retainer
35	MD00 9784	4			RETAINER, Jet Valve Spring
36	MD00 9783	4			SPRING, Jet Valve
37	MD08 8384	4			SEAL, Jet Valve Stem
38	MD00 9786	4			O-RING, Jet Valve
39	MD07 2177	8			ADJUSTER, Automatic Valve Lash
40	MD08 4945	1			DAMPER, Tensioner

<b>ENGINE:</b>		Q=1500 cc	A=2000 cc	<b>TRANS:</b>	A=Automatic	4=4-Speed Manual
Blank=All		K=1600 cc (w/o Balance Shaft)	F=2600 cc (Car)	Blank=All	M=All Manual	5=5-Speed Manual
		W=2600 cc (Truck)				8=4 x 2 Manual
<b>SERIES:</b>		H=High	<b>MODELS:</b>		24 FWD=2-Dr Hatchback (Colt)	
L=Low	P=Premium		24 RWD=2-Dr Hatchback (Conquest)	27 RWD=4WD=Pickup (Ram 50, Power Ram 50)	27 4WD=Sport Utility (Raider)	45 FWD=4-Dr Station Wagon (Colt)
M=Medium	S=Special		41 FWD=4-Dr Sedan (Colt & Eagle Vista)			45 FWD=4WD=Station Wagon (Vista)
AR=Use as Required		# =New Part Number	-- =Non Illustrated Part		Printed in U.S.A.	
					FEBRUARY, 1989	

OIL PAN & TIMING CHAIN COVER  
24RWD,27  
2.6 L ENGINE**7758 4300**

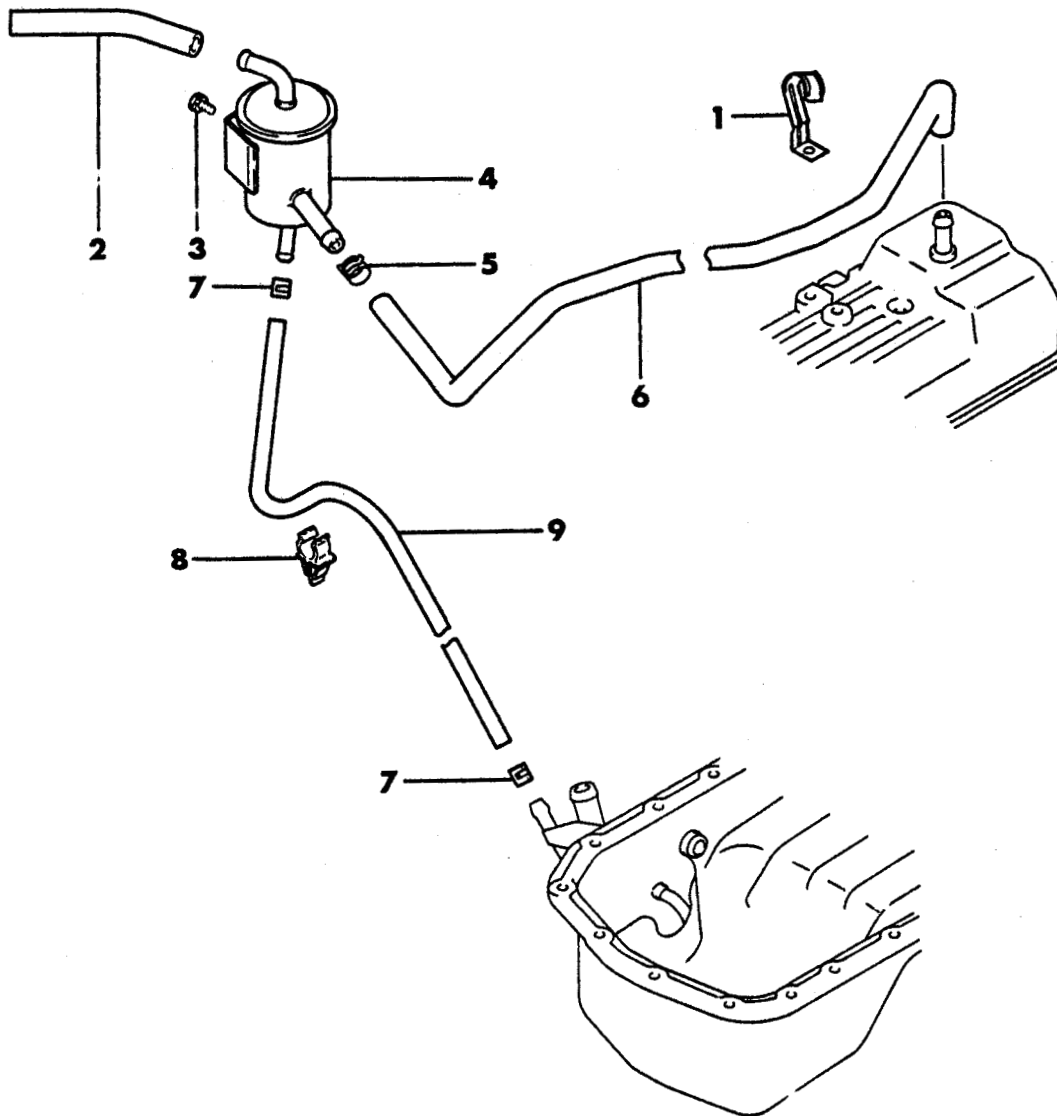
# 1987-88 IMPORT PARTS CATALOG

Figure 9A-4300  
Illus. Page 9A-105

ENGINE, 4 CYLINDER

ITEM	PART NUMBER	QTY	BODY	MODEL	DESCRIPTION
OIL PAN & TIMING CHAIN COVER					
24RWD,27					
2.6 L ENGINE					
1	MS10 1245	8			BOLT, Flange (8x68mm)
2	MS10 1243	2			BOLT, Flange (8x58mm)
3	MD06 1181	1		24 RWD	CASE, Timing Chain
	MD02 0347	1		27	
4	MD02 0324	1			GASKET, Chain Case Right
5	MD02 0325	1			GASKET, Chain Case Left
6	MD02 0353	1			GASKET, Chain Case Access Hole Cover
7	MD02 0349	1			COVER, Chain Case Access Hole
8	MF14 0206	2			BOLT, Flange (6x18mm)
9	MD02 0308	1			OIL SEAL, Crankshaft Front
10	MS10 1246	1			BOLT, Flange (8x73mm)
11	MF24 1223	4			BOLT and WASHER, (6x12mm)
12	MD02 4262	1			PLATE, Engine Rear Adapter w/Manual Transmission
13	MD02 4264	1			COVER, Bellhousing w/Manual Transmission
14	MF24 1223	4			BOLT and WASHER, (6x12mm)
15	MD02 4262	1			PLATE, Engine Rear Adapter w/Automatic Trans.
16	MD05 0603	1		24 RWD	COVER, Bellhousing w/Automatic Trans.
	MD02 4264	1		27	
	MD05 0603	1		RAIDER	(Canada) w/Automatic Trans. (1987)
17	MD02 1577	1		27	GASKET, Oil Pump Pickup Screen
18	MS24 1071	2		27	BOLT and WASHER, (8x20mm)
19	MD02 1576	1		27 RWD	SCREEN, Oil Pump Pickup
	MD02 6499	1		27 4WD	
	MD02 5573	1		RAIDER	
20	MD02 0230	1		27 RWD	PAN, Engine Oil
	MD02 6503	1		27 4WD	
	MD01 4915	1		RAIDER	
21	MD05 0316	1			PLUG, Engine Oil Pan Drain
22	MD05 0317	1			GASKET, Oil Pan Drain Plug (14mm)
23	MD02 0232	1			GASKET, Engine Oil Pan
24	MF24 1223	24			BOLT and WASHER, (6x12mm)
25	MD01 1159	1		24 RWD	NIPPLE
26	MD06 8388	1		24 RWD	O-RING, Oil Pump Pickup Screen
27	MD06 6733	1		24 RWD	SCREEN, Oil Pump Pickup
28	MF45 0405	2		24 RWD	WASHER, Spring (8mm)
29	MF43 0005	2		24 RWD	NUT, (8mm)
30	MD07 3345	1		24 RWD	PAN, Engine Oil
31	MD06 4479	1		24 RWD	INDICATOR, Engine Oil Level Up to 4/88
	MD13 9706	1		24 RWD	After 4/88
32	MD07 3302	1		24 RWD	TUBE, Oil Level Indicator
33	MF52 0004	1		24 RWD	O-RING, Oil Level Indicator Tube (9mm)

<b>ENGINE:</b>		Q=1500 cc	A=2000 cc	<b>TRANS:</b>	A=Automatic	4=4-Speed Manual
Blank=All		K=1600 cc (w/o Balance Shaft)	F=2600 cc (Car)	Blank=All	M=All Manual	5=5-Speed Manual
		W=2600 cc (Truck)				8=4 x 2 Manual
<b>SERIES:</b>		H=High	<b>MODELS:</b>		24 FWD=2-Dr Hatchback (Colt)	
L=Low	P=Premium		24 RWD=2-Dr Hatchback (Conquest)		27 RWD-4WD=Pickup (Ram 50, Power Ram 50)	
M=Medium	S=Special		41 FWD=4-Dr Sedan (Colt & Eagle Vista)		27 4WD=Sport Utility (Raider)	
					45 FWD=4-Dr Station Wagon (Colt)	
					45 FWD-4WD=Station Wagon (Vista)	
AR=Use as Required		#=New Part Number	--=Non Illustrated Part		Printed in U.S.A.	
					FEBRUARY, 1989	

**77584400**OIL SEPARATOR & ENGINE BREATHER  
(W/O INTERCOOLER 24RWD) (1987)  
2.6 L ENGINE

# 1987-88 IMPORT PARTS CATALOG

Figure 9A-4400  
Illus. Page 9A-107

ENGINE, 4 CYLINDER

ITEM	PART NUMBER	QTY	BODY	MODEL	DESCRIPTION
------	-------------	-----	------	-------	-------------

## OIL SEPARATOR & ENGINE BREATHER (W/O INTERCOOLER 24RWD) (1987) 2.6 L ENGINE

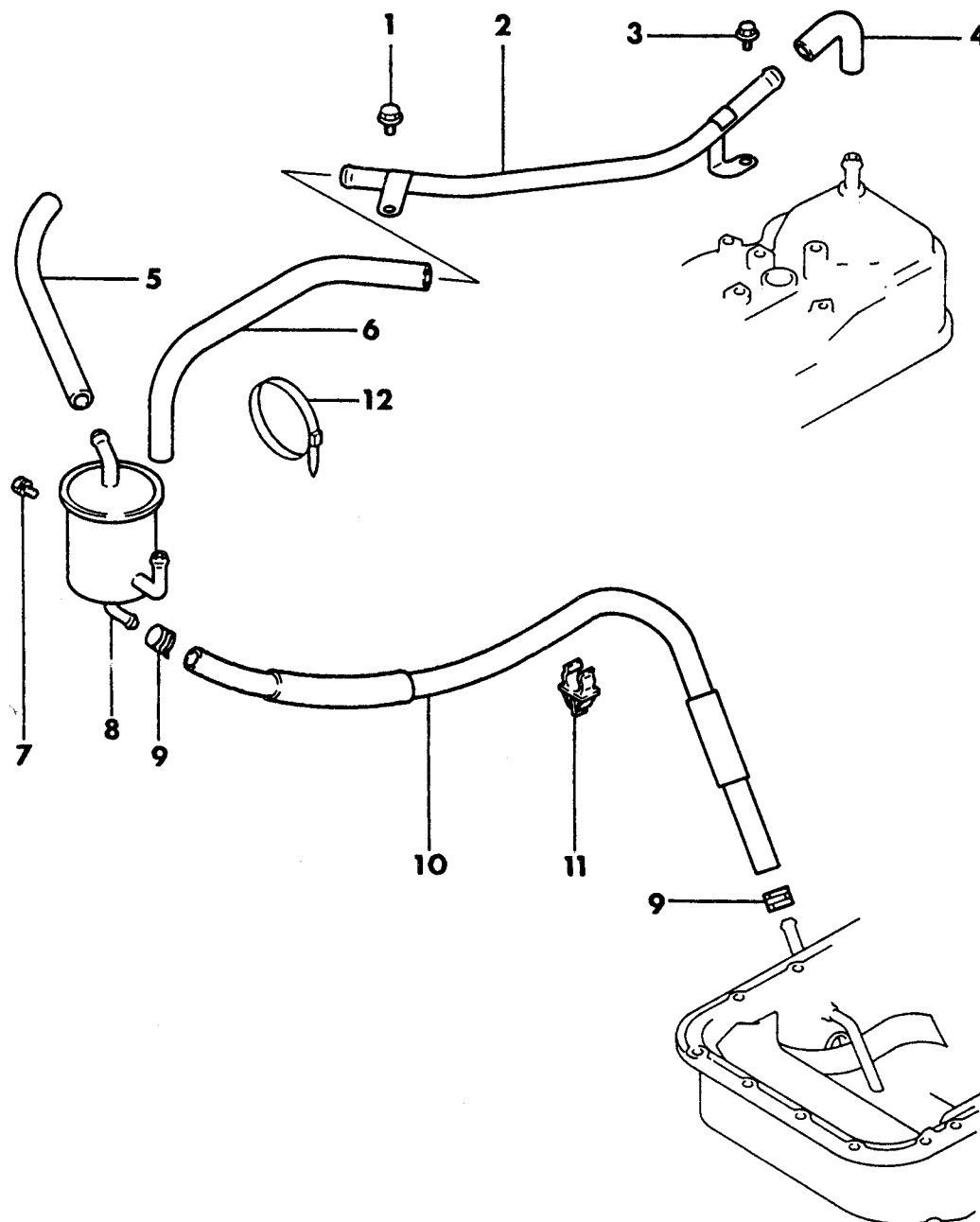
1	MD06 2933	1			CLAMP, Breather Hose
2	MD08 3128	1			HOSE, Breather (B)
3	MF24 0022	2			SCREW and WASHER, (6x10mm)
4	MD11 0081	1			SEPARATOR, Oil
5	MS66 0168	1			CLIP, Hose (17.8mm)
6	MD06 2931	1			HOSE, Breather (A)
7	MS66 0177	2			CLIP, Hose (11.6mm)
8	MD01 1900	1			CLIP, Hose
9	MD01 5209	1			HOSE, Oil Drain

<b>ENGINE:</b>	Q=1500 cc	A=2000 cc	<b>TRANS:</b>	A=Automatic	4=4-Speed Manual
Blank=All	K=1600 cc (w/o Balance Shaft)	F=2600 cc (Car)	Blank=All	M=All Manual	5=5-Speed Manual
	W=2600 cc (Truck)				8=4 x 2 Manual
<b>SERIES:</b>	H=High	<b>MODELS:</b> 24 FWD=2-Dr Hatchback (Colt)	27 RWD-4WD=Pickup (Ram 50, Power Ram 50)		
L=Low	P=Premium	24 RWD=2-Dr Hatchback (Conquest)	27 4WD=Sport Utility (Raider)	45 FWD=4-Dr Station Wagon (Colt)	
M=Medium	S=Special	41 FWD=4-Dr Sedan (Colt & Eagle Vista)		45 FWD-4WD=Station Wagon (Vista)	
AR=Use as Required	#=New Part Number	--=Non Illustrated Part	Printed in U.S.A.	FEBRUARY, 1989	

7758 4500

OIL SEPARATOR & ENGINE BREATHER  
(W/INTERCOOLER) 24RWD  
2.6 L ENGINE

## INTER COOLER



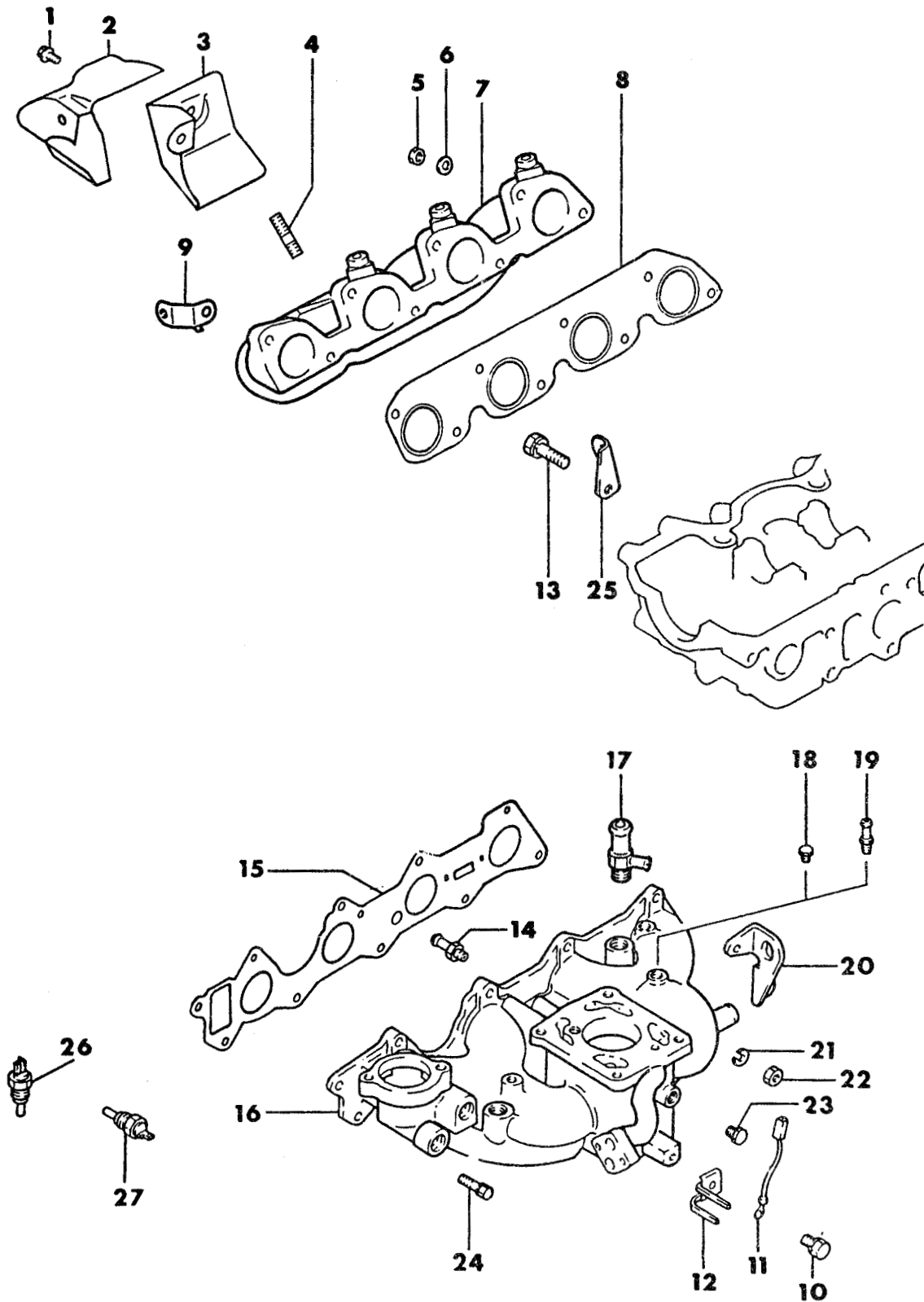
# 1987-88 IMPORT PARTS CATALOG

Figure 9A-4500  
Illus. Page 9A-109

ENGINE, 4 CYLINDER

ITEM	PART NUMBER	QTY	BODY	MODEL	DESCRIPTION
OIL SEPARATOR & ENGINE BREATHER (W/INTERCOOLER) 24RWD 2.6 L ENGINE					
1	MB52 7239	1			BOLT, Flange (8x12mm) (1987)
	MF14 0021	1			(8x12mm) (1988)
2	MD09 2762	1			PIPE, Breather
3	MF14 0203	1			BOLT, Flange (6x12mm)
4	MD09 2339	1			HOSE, Breather
5	MD10 6809	1			HOSE, Breather (B)
6	MD09 2340	1			HOSE, Breather
7	MF24 0022	2			BOLT, (6x10mm)
8	MD08 2506	1			SEPARATOR, Oil
9	MS66 0177	2			CLIP, Hose (11.6mm) (1987)
	MS66 0177	1			(11.6mm ) (1988)
10	MD06 8399	1			HOSE, Oil Drain
11	MD01 1900	1			CLIP, Hose
12		1			BAND, Cable (Not Serviced)

<b>ENGINE:</b>		Q=1500 cc	A=2000 cc	<b>TRANS:</b>	A=Automatic	4=4-Speed Manual
Blank=All		K=1600 cc (w/o Balance Shaft)	F=2600 cc (Car)	Blank=All	M=All Manual	5=5-Speed Manual
		W=2600 cc (Truck)				6=4 x 2 Manual
<b>SERIES:</b>	H=High	<b>MODELS:</b> 24 FWD=2-Dr Hatchback (Colt)		27 RWD-4WD=Pickup (Ram 50, Power Ram 50)		
L=Low	P=Premium	24 RWD=2-Dr Hatchback (Conquest)		27 4WD=Sport Utility (Raider)	45 FWD=4-Dr Station Wagon (Colt)	
M=Medium	S=Special	41 FWD=4-Dr Sedan (Colt & Eagle Vista)			45 FWD-4WD=Station Wagon (Vista)	
AR=Use as Required		# =New Part Number	-- =Non Illustrated Part	Printed in U.S.A.		FEBRUARY, 1989

**77584600 A**MANIFOLD, INTAKE & EXHAUST  
24RWD  
2.6 L ENGINE

# 1987-88 IMPORT PARTS CATALOG

Figure 9A-4600  
Illus. Page 9A-111

ENGINE, 4 CYLINDER

ITEM	PART NUMBER	QTY	BODY	MODEL	DESCRIPTION
MANIFOLD, INTAKE & EXHAUST					
24RWD					
2.6 L ENGINE					
1	MD06 7956	3			BOLT, Flange
2	MD00 0287	1			PROTECTOR, Heat
3	MD00 0288	1			PROTECTOR, Heat
4	MD04 1344	4			STUD, (10x30mm)
5	MD09 2806	8			NUT, (8mm)
6	MD04 1192	7			WASHER, Plain (8mm)
7	MD10 1960	1			MANIFOLD, Exhaust
8	MD10 2683	1			GASKET, Exhaust Manifold
9	MD08 4551	1			BRACKET, Oil Pipe
10	MB52 7239	1			BOLT and WASHER, (8x14mm) (1987)
	MF14 0021	1			(8x12mm) (1988)
11	MD04 1720	1			CABLE, Intake Manifold Ground
12	MD04 0990	1			CLAMP, Cable
13	MF14 0222	1			BOLT, Flange (8x14)
14	MD00 0428	1			NIPPLE, Hose
15	MD06 0243	1			GASKET, Intake Manifold
16	MD07 0942	1			MANIFOLD, Intake
17	MD02 0630	1			JOINT
18	MD00 0429	1			PLUG, Taper (1/16" NPT) w/Manual Trans.
19	MD04 0973	1			NIPPLE, Hose (1/16" NPT) w/Automatic Trans.
20	MD02 6525	1			HANGER, Engine
21	MF45 0405	9			WASHER, Spring (8mm)
22	MF43 0005	9			NUT, (8mm)
23	MD01 4929	1			PLUG, Taper (1/8" NPT)
24	MF24 1256	1			BOLT and WASHER, (8x28mm)
25	MD00 0255	1			HANGER, Engine (Front)
26		1			(See Group 8)
27		1			(See Group 8)

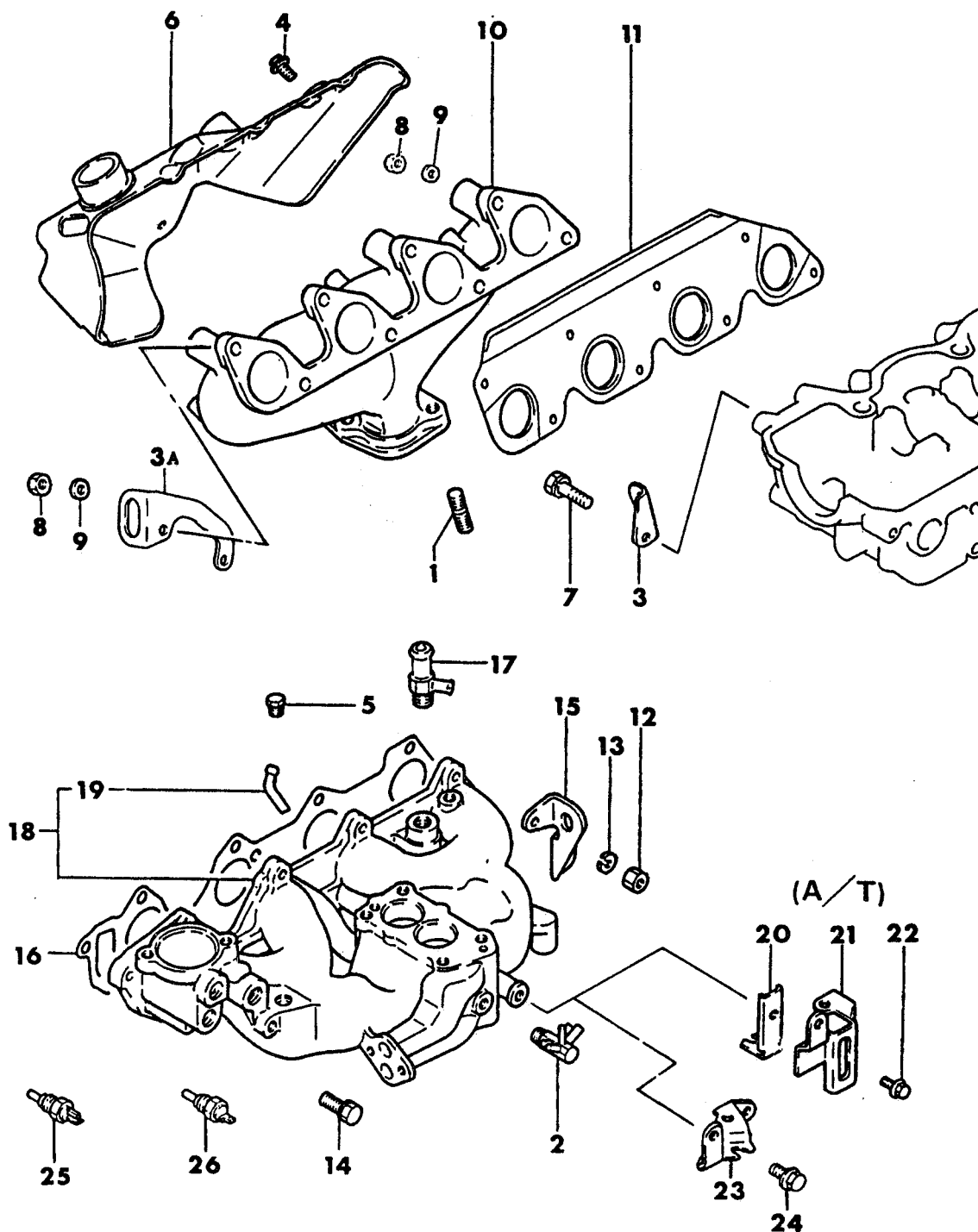
<b>ENGINE:</b>	Q=1500 cc	A=2000 cc	<b>TRANS:</b>	A=Automatic	4=4-Speed Manual
Blank=All	K=1600 cc (w/o Balance Shaft)	F=2600 cc (Car)	Blank=All	M=All Manual	5=5-Speed Manual
	W=2600 cc (Truck)				8=4 x 2 Manual
<b>SERIES:</b>	H=High	<b>MODELS:</b>	24 FWD=2-Dr Hatchback (Colt) 27 RWD-4WD=Pickup (Ram 50, Power Ram 50)		
L=Low	P=Premium		24 RWD=2-Dr Hatchback (Conquest) 27 4WD=Sport Utility (Raider) 45 FWD=4-Dr Station Wagon (Colt)		
M=Medium	S=Special		41 FWD=4-Dr Sedan (Colt & Eagle Vista) 45 FWD-4WD=Station Wagon (Vista)		
AR=Use as Required		# =New Part Number	— =Non Illustrated Part		Printed in U.S.A.
				FEBRUARY, 1989	

7758 4700 C

MANIFOLD, INTAKE & EXHAUST

27

2.6 L ENGINE



# 1987-88 IMPORT PARTS CATALOG

ENGINE, 4 CYLINDER

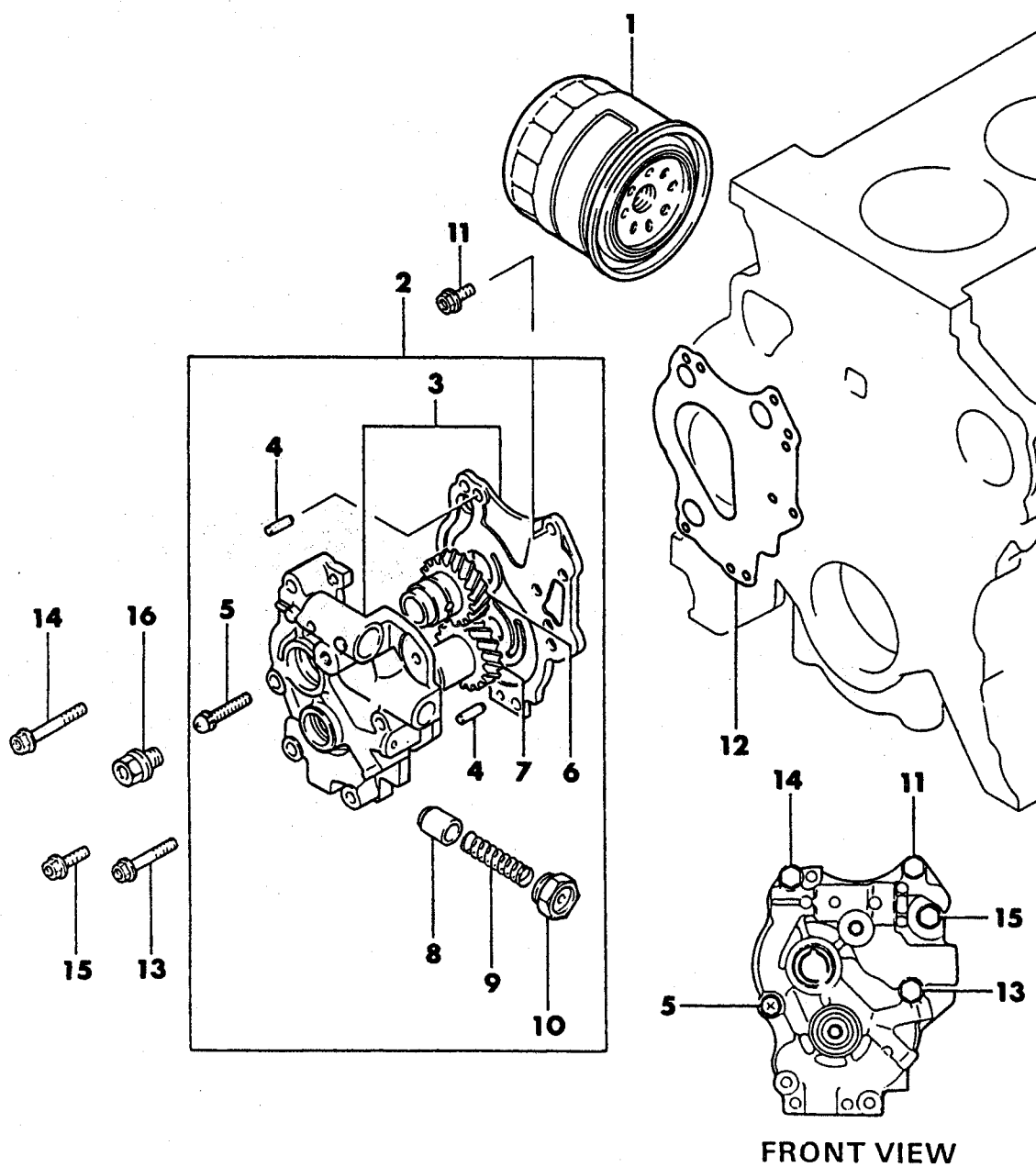
Figure 9A-4700  
Illus. Page 9A-113

ITEM	PART NUMBER	QTY	BODY	MODEL	DESCRIPTION
MANIFOLD, INTAKE & EXHAUST					
27					
2.6 L ENGINE					
1	MF40 2585	3			STUD, (10x25)
2	MD10 1458	1			CONNECTOR, Vacuum
3	MD00 0255	1			HANGER, Engine Front Up to 12/86
3A	MD12 0116	1			After 12/86
4	MD06 7956	5			BOLT, Flange (8x12)
5	MD01 4929	1			PLUG, Taper (PT-1/8)
6	MD11 0724	1			COWL, Heat
7	#MF14 0222	1			BOLT, Flange (8x14mm) Up to 12/86
8	MD00 0569	8			NUT, (8mm)
9	MS45 0035	8			WASHER, Plain (8mm)
10	MD11 0720	1			MANIFOLD, Exhaust
11	MD02 5593	1			GASKET, Exhaust Manifold
12	MF43 0005	9			NUT, (8mm)
13	MF45 0405	9			WASHER, Spring (8mm)
14	MF24 1256	1			BOLT and WASHER, (8x28mm)
15	MD11 3597	1		27	HANGER, Engine Rear
	MD02 6525	1		RAIDER	HANGER, Engine Rear
16	MD02 4628	1			GASKET, Intake Manifold
17	MD02 0630	1			JOINT
18	MD10 7570	1			MANIFOLD, Intake w/Manual Trans.
	MD10 7546	1			w/Automatic Trans.
19	MD02 6758	1			NIPPLE, PCV Hose
20	MD72 3870	1		27	BRACKET, Throttle Cable, Inner w/Automatic Trans. Except RAIDER
21	MD72 3871	1		27	BRACKET, Throttle Cable, Outer w/Automatic Trans. Except RAIDER
22	MB52 7239	3		27	BOLT, Flange (8x12) Except RAIDER (1987)
	MF14 0021	3		27	(8x12) Except RAIDER (1988)
23	MD71 0510	1		RAIDER	BRACKET, Kickdown Cable w/Automatic Trans.
24	MB52 7239	2		RAIDER	BOLT, Flange (8x12) (1987)
	MF14 0021	2		RAIDER	(8x12) (1988)
25		1			(See Group 8)
26		1			(See Group 8)

<b>ENGINE:</b>	Q=1500 cc	A=2000 cc	<b>TRANS:</b>	A=Automatic	4=4-Speed Manual
Blank=All	K=1600 cc (w/o Balance Shaft)	F=2600 cc (Car)	Blank=All	M=All Manual	5=5-Speed Manual
	W=2600 cc (Truck)				8=4 x 2 Manual
<b>SERIES:</b>	H=High	<b>MODELS:</b>	24 FWD=2-Dr Hatchback (Colt)	27 RWD=4WD=Pickup (Ram 50, Power Ram 50)	
L=Low	P=Premium		24 RWD=2-Dr Hatchback (Conquest)	27 4WD=Sport Utility (Raider)	45 FWD=4-Dr Station Wagon (Colt)
M=Medium	S=Special		41 FWD=4-Dr Sedan (Colt & Eagle Vista)		45 FWD=4WD=Station Wagon (Vista)
AR=Use as Required	# =New Part Number	- =Non Illustrated Part	Printed in U.S.A.	FEBRUARY, 1989	

7758 4800

OIL PUMP & OIL FILTER  
24RWD,27  
2.6 L ENGINE



# 1987-88 IMPORT PARTS CATALOG

Figure 9A-4800  
Illus. Page 9A-115

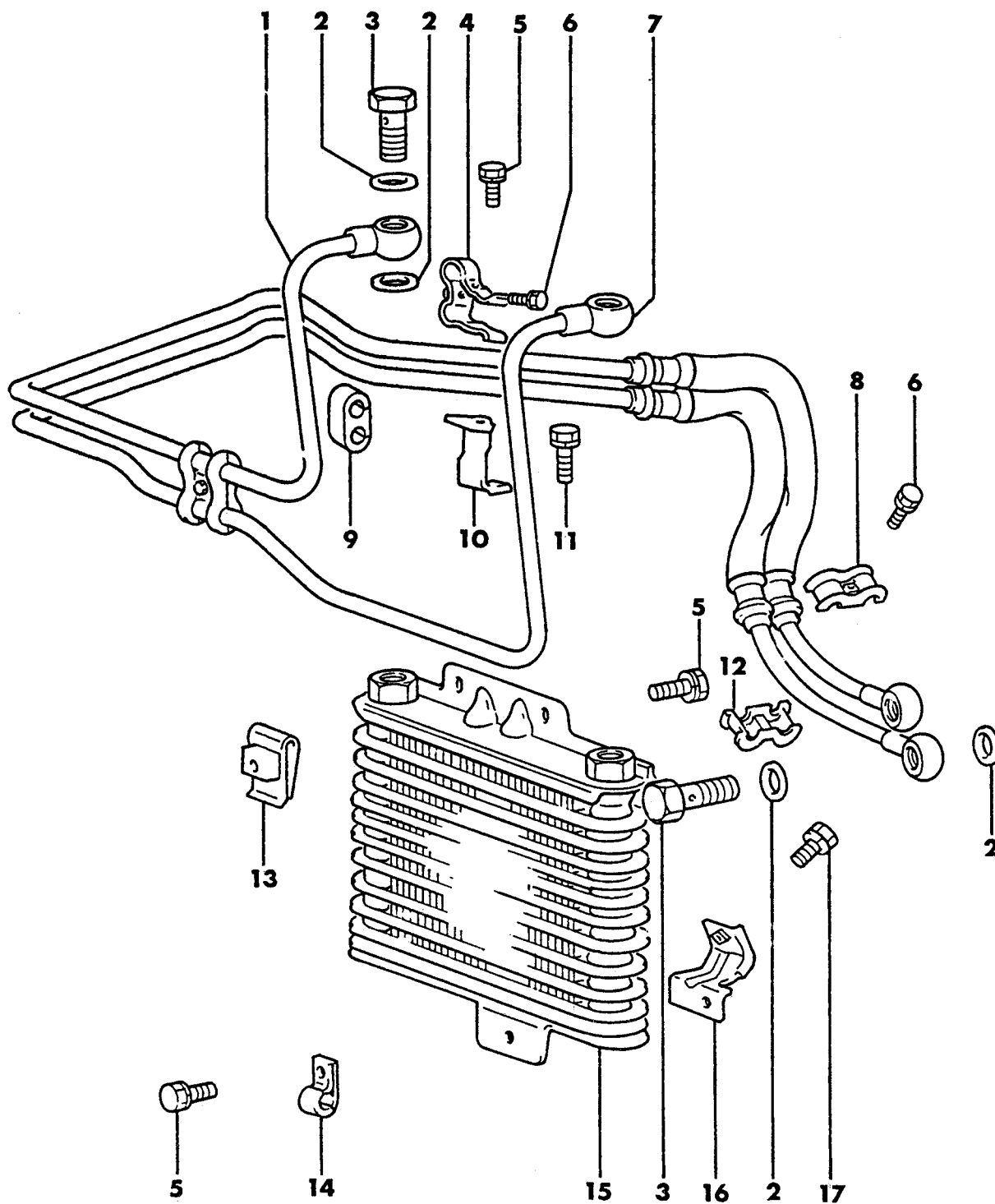
ENGINE, 4 CYLINDER

ITEM	PART NUMBER	QTY	BODY	MODEL	DESCRIPTION
OIL PUMP & OIL FILTER					
24RWD,27					
2.6 L ENGINE					
1	MD03 1805	1			FILTER, Engine Oil
2	MD06 9800	1		24 RWD	PUMP, Engine Oil
	MD06 0517	1		27	
3	MD06 7307	1		24 RWD	BODY and COVER, Oil Pump
	MD06 0518	1		27	
4	MD02 3415	2			PIN
5	MF35 0083	1			SCREW and WASHER, (6x40mm)
6	MD06 1314	1			GEAR, Oil Pump Driven
7	MD06 1313	1			GEAR, Oil Pump Drive
8	MD02 1563	1			PLUNGER, Oil Pressure Relief Valve
9	MD05 0299	1			SPRING, Oil Pressure Relief Valve
10	MD02 1564	1			PLUG
11	MS10 1315	1			BOLT, Flange (6x16mm)
12	MD06 0521	1			GASKET, Oil Pump
13	MS10 1319	1			BOLT, Flange (6x38mm)
14	MS10 1322	1			BOLT, Flange (6x45mm)
15	MS10 1316	1			BOLT, Flange (6x22mm)
16	MD02 7152	1			BOLT, Flange (10x15mm)

<b>ENGINE:</b>		Q=1500 cc	A=2000 cc	<b>TRANS:</b>		A=Automatic	4=4-Speed Manual
Blank=All		K=1600 cc (w/o Balance Shaft)	F=2600 cc (Car)	Blank=All		M=All Manual	5=5-Speed Manual
		W=2600 cc (Truck)					8=4 x 2 Manual
<b>SERIES:</b>		H=High	<b>MODELS:</b>		24 FWD=2-Dr Hatchback (Colt)	27 RWD-4WD=Pickup (Ram 50, Power Ram 50)	
L=Low		P=Premium			24 RWD=2-Dr Hatchback (Conquest)	27 4WD=Sport Utility (Raider)	45 FWD=4-Dr Station Wagon (Colt)
M=Medium		S=Special			41 FWD=4-Dr Sedan (Colt & Eagle Vista)		45 FWD-4WD=Station Wagon (Vista)
AR=Use as Required		# =New Part Number	-- =Non Illustrated Part		Printed in U.S.A.		FEBRUARY, 1989

7758 4900

ENGINE OIL COOLER  
W/O INTERCOOLER 24RWD (1987)  
2.6 L ENGINE



# 1987-88 IMPORT PARTS CATALOG

Figure 9A-4900  
Illus. Page 9A-117

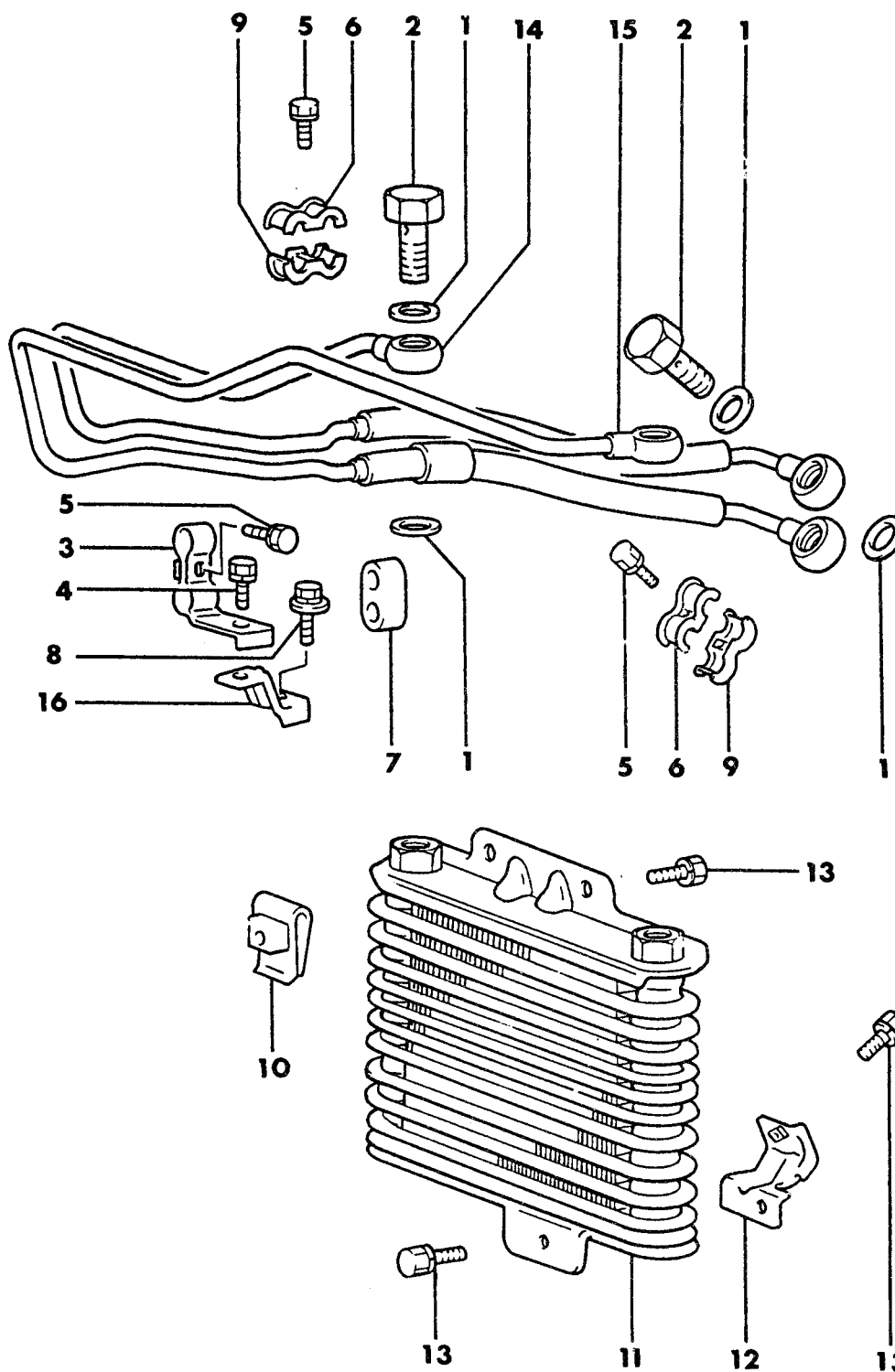
ENGINE, 4 CYLINDER

ITEM	PART NUMBER	QTY	BODY	MODEL	DESCRIPTION
ENGINE OIL COOLER W/O INTERCOOLER 24RWD (1987) 2.6 L ENGINE					
1	MB03 3222	1			HOSE, Return
2	MB03 3054	8			GASKET, Eye Bolt
3	MB03 3025	4			BOLT, Eye
4	MB03 3076	1			CLAMP, Cooler Tube
5	MS24 0125	1			BOLT and WASHER, (8x16mm)
6	MF24 3623	3			BOLT and WASHER, (6x14mm)
7	MB03 3221	1			HOSE, Feed
8	MB03 3042	2			CLAMP, Cooler Tube
9	MB12 2648	1			CLAMP, Cooler Tube
10	MB03 3075	1			BRACKET, Cooler Tube
11	MF24 3678	1			BOLT and WASHER, (10x20mm)
12	MB03 3043	2			CLAMP, Cooler Tube
13	MB03 3161	2			NUT, Spring
14	MB03 3077	1			CLIP
15	MB03 3020	1			COOLER, Oil
16	MB03 3160	1			BRACKET, Oil Cooler
17	MS24 0125	4			BOLT and WASHER, (8x16mm)

<b>ENGINE:</b>		Q=1500 cc	A=2000 cc	<b>TRANS:</b>		A=Automatic	4=4-Speed Manual
Blank=All		K=1600 cc (w/o Balance Shaft)	F=2600 cc (Car)	Blank=All		M=All Manual	5=5-Speed Manual
		W=2600 cc (Truck)					8=4 x 2 Manual
<b>SERIES:</b>		H=High	<b>MODELS:</b>		24 FWD=2-Dr Hatchback (Colt)	27 RWD-4WD=Pickup (Ram 50, Power Ram 50)	
L=Low		P=Premium			24 RWD=2-Dr Hatchback (Conquest)	27 4WD=Sport Utility (Raider)	45 FWD=4-Dr Station Wagon (Colt)
M=Medium		S=Special			41 FWD=4-Dr Sedan (Colt & Eagle Vista)		45 FWD-4WD=Station Wagon (Vista)
AR=Use as Required		# =New Part Number	- =Non Illustrated Part		Printed in U.S.A.		FEBRUARY, 1989

7758 5000

ENGINE OIL COOLER  
W/INTERCOOLER 24RWD  
2.6 L ENGINE



# 1987-88 IMPORT PARTS CATALOG

Figure 9A-5000  
Illus. Page 9A-119

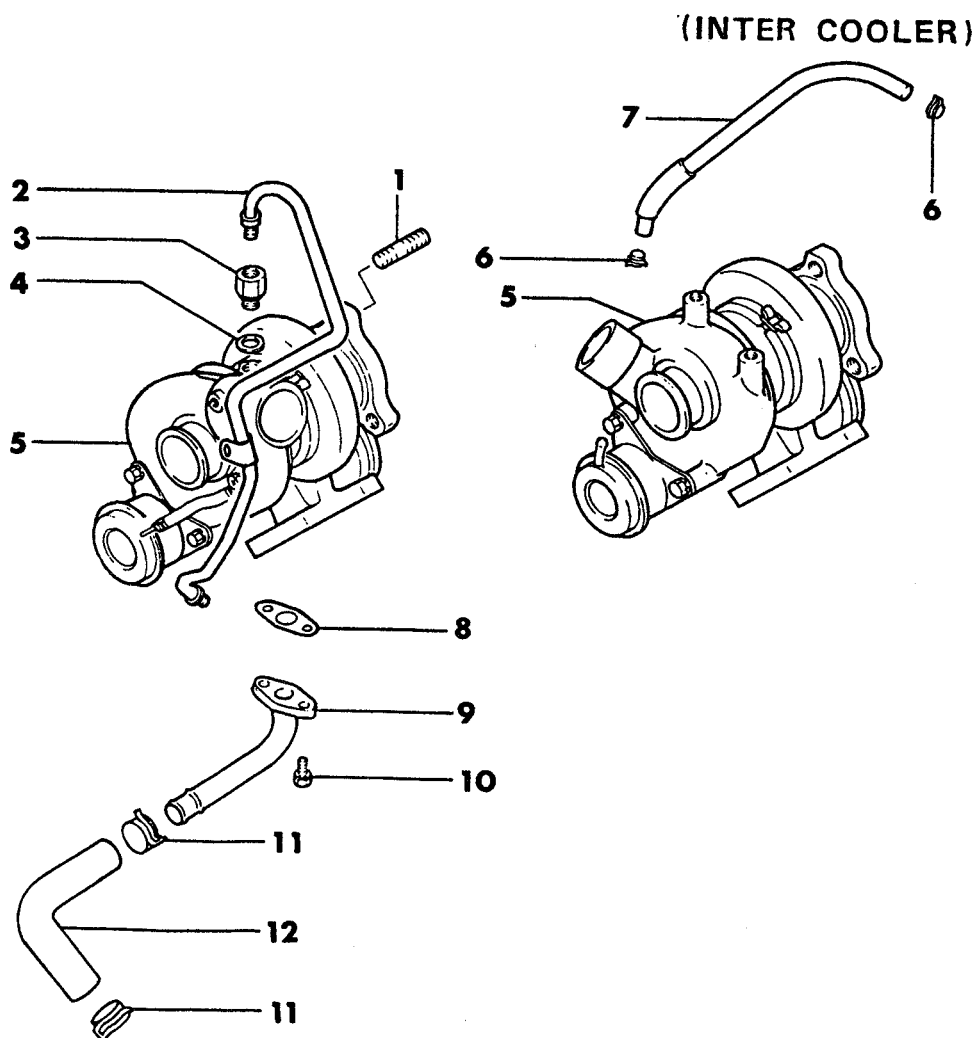
ENGINE, 4 CYLINDER

ITEM	PART NUMBER	QTY	BODY	MODEL	DESCRIPTION
ENGINE OIL COOLER W/INTERCOOLER 24RWD 2.6 L ENGINE					
1	MB03 3054	8			GASKET, Eye Bolt
2	MB03 3025	4			BOLT, Eye
3	MB03 3076	1			CLAMP, Cooler Tube
4	MS24 0125	1			BOLT and WASHER, (8x16mm) (1987)
	MF24 3649	1			(8x16mm) (1988)
5	MF24 3623	3			BOLT and WASHER, (6x14mm)
6	MB03 3042	2			CLAMP, Cooler Tube
7	MB12 2648	1			CLAMP, Cooler Tube
8	MF24 3678	1			BOLT and WASHER, (10x20mm)
9	MB03 3043	2			CLAMP, Cooler Tube
10	MB03 3161	2			NUT, Spring
11	MB03 3020	1			COOLER, Oil
12	MB03 3160	1			BRACKET, Oil Cooler
13	MS24 0125	4			BOLT and WASHER, (8x16mm) (1987)
	MF24 3649	4			(8x16mm) (1988)
14	MB03 3472	1			HOSE, Return
15	MB03 3471	1			HOSE, Feed
16	MB03 3319	1			BRACKET, Cooler Tube

<b>ENGINE:</b>	Q=1500 cc	A=2000 cc	<b>TRANS:</b>	A=Automatic	4=4-Speed Manual
	Blank=All	F=2600 cc (Car)		M=All Manual	5=5-Speed Manual
	W=2600 cc (Truck)				8=4 x 2 Manual
<b>SERIES:</b>	H=High	<b>MODELS:</b> 24 FWD=2-Dr Hatchback (Colt) 27 RWD-4WD=Pickup (Ram 50, Power Ram 50)			
L=Low	P=Premium	24 RWD=2-Dr Hatchback (Conquest) 27 4WD=Sport Utility (Raider) 45 FWD=4-Dr Station Wagon (Colt)			
M=Medium	S=Special	41 FWD=4-Dr Sedan (Colt & Eagle Vista) 45 FWD-4WD=Station Wagon (Vista)			
AR=Use as Required		# = New Part Number	~ = Non Illustrated Part		Printed in U.S.A. FEBRUARY, 1989

7758 5100

OIL LINES, TURBO  
24RWD  
2.6 L ENGINE



# 1987-88 IMPORT PARTS CATALOG

Figure 9A-5100

Illus. Page 9A-121

ENGINE, 4 CYLINDER

ITEM	PART NUMBER	QTY	BODY	MODEL	DESCRIPTION
OIL LINES, TURBO					
24RWD					
2.6 L ENGINE					
1	MD05 0074	3			STUD, (10x27)
2	MD08 4550	1			PIPE, Oil Feed
3	MD01 7359	3			JOINT, Oil Pipe
4	MF66 0064	1			GASKET, Oil Pipe Joint (12mm)
5		1			(See Group 14)
6	MS66 0159	2			CLAMP, Hose (7.8mm)
7	MD09 2242	1			HOSE, Boost w/Intercooler
8	MD05 0082	1			GASKET, Oil Return Pipe
9	MD01 1116	1			PIPE, Oil Return
10	MF14 0204	2			BOLT and WASHER, (6x16) (1987)
	MF24 1225	2			(6x16) (1988)
11	MS66 0172	2			CLAMP, Hose (23mm)
12	MD01 1117	1			HOSE, Oil Return

<b>ENGINE:</b>		Q=1500 cc	A=2000 cc	<b>TRANS:</b>		A=Automatic	4=4-Speed Manual
Blank=All		K=1600 cc (w/o Balance Shaft)	F=2600 cc (Car)	Blank=All		M=All Manual	5=5-Speed Manual
		W=2600 cc (Truck)					8=4 x 2 Manual
<b>SERIES:</b>		H=High	<b>MODELS:</b>		24 FWD=2-Dr Hatchback (Colt)	27 RWD-4WD=Pickup (Ram 50, Power Ram 50)	
L=Low	P=Premium		24 RWD=2-Dr Hatchback (Conquest)	27 4WD=Sport Utility (Raider)	45 FWD=4-Dr Station Wagon (Colt)		
M=Medium	S=Special		41 FWD=4-Dr Sedan (Colt & Eagle Vista)		45 FWD-4WD=Station Wagon (Vista)		
AR=Use as Required		# = New Part Number	-- = Non Illustrated Part		Printed in U.S.A.		FEBRUARY, 1989