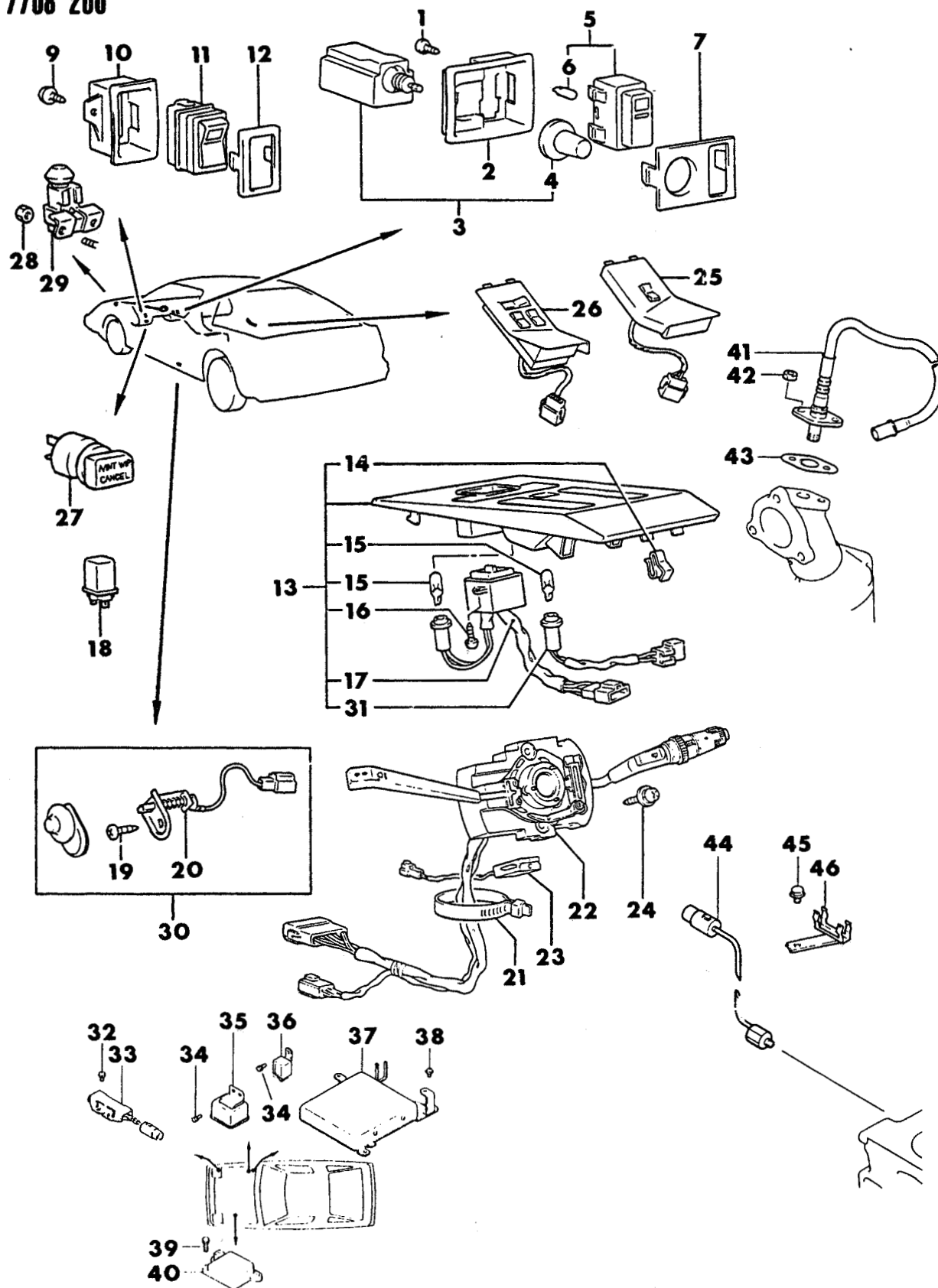


SWITCHES & ELECTRICAL CONTROLS
24-RWD-CONQUEST

7708 200



1987-88 IMPORT PARTS CATALOG

Figure 8-200
Illus. Page 8-9

ELECTRICAL

ITEM	PART NUMBER	QTY	BODY	MODEL	DESCRIPTION
SWITCHES & ELECTRICAL CONTROLS 24-RWD-CONQUEST					
1	MF45 3016				SCREW, Tapping
2	MB18 6423				GARNISH, Switch
3	MB18 6436				RHEOSTAT, Orange
	MB25 9888				w/LCD
4	MB18 7399				KNOB, Rheostat
5	MB17 1688				SWITCH, Defogger
6	MS82 0083				BULB, Lamp, 14V-1.4W
7	MB18 6424				PANEL, Switch
9	MF45 3016				SCREW, Tapping
10	MB18 6413				GARNISH, Switch
11	MB52 1918				SWITCH, Rear Wipe & Wash
12	MB18 6411				PANEL, Switch
13	MB52 1191				PANEL, Rear Console
14	MB18 4924				SPRING
15	MS82 0083				BULB, Lamp
16	MS20 0122				SCREW, Machine
17	MB38 6285				SWITCH, Mirror
18	MB18 3865				RELAY, Power (Tail Lamp, Headlamp, Power Window, Defogger) (4P)
19	MF45 3031				SCREW, Tapping
20	MB07 0211				CAP, Door Opening Switch
21					BAND, Cable, Not Serv.
22	MB39 9301				SWITCH, Column
	MB39 9303				w/Audio System
23	MB38 2174				AMP
24	MS35 0047				SCREW, w/Washer
25	MB50 9371				SWITCH, One Touch
26	MB50 9370				SWITCH, One Touch
27	MB41 4489				SWITCH, A/Int. Cancel
28	MF43 0004				NUT
29	MB51 0839				SWITCH, Hood Alarm
30	MB52 7234				SWITCH KIT, D/Lamp, 2-Conn.
31	MB52 1715				LAMP INDICATOR
32	MS35 0133				SCREW, w/Washer
33	MD06 2706				RESISTOR
34	MS45 0157				SCREW, Tapping
35	MD01 9115				RELAY, E.C.I. Control
36	MD10 1250				RELAY, E.C.I. Control, w/Diode
37	MD11 1820				CONTROL UNIT, Engine, Turbo
	MD10 6394				w/Intercooler
	MD12 0197				1988
38	MS35 0133				SCREW, w/Washer
39	MF24 3628				BOLT, w/Washer 1987
	MS24 0121				1988
40	MD10 9942				IGNITER, 1987
	MD12 5748				1988
41	MD07 3546				SENSOR, Oxygen 1987
	MD12 1306				1988
42	MD04 1209				NUT
43	MD04 1864				GASKET
44	MD06 3724				SENSOR, Knock

ENGINE:		Q=1500 cc	A=2000 cc	TRANS:	A=Automatic	4=4-Speed Manual
Blank=All		K=1600 cc (w/o Balance Shaft)	F=2600 cc (Car)	Blank=All	M=All Manual	5=5-Speed Manual
		W=2600 cc (Truck)				8=4 x 2 Manual
SERIES:		H=High	MODELS:		24 FWD=2-Dr Hatchback (Colt)	27 RWD-4WD=Pickup (Ram 50, Power Ram 50)
L=Low	P=Premium		24 RWD=2-Dr Hatchback (Conquest)	27 4WD=Sport Utility (Raider)	45 FWD=4-Dr Station Wagon (Colt)	
M=Medium	S=Special		41 FWD=4-Dr Sedan (Colt & Eagle Vista)		45 FWD-4WD=Station Wagon (Vista)	
AR=Use as Required		# =New Part Number	- =Non Illustrated Part		Printed in U.S.A.	FEBRUARY, 1989

1987-88 IMPORT PARTS CATALOG

Figure 8-200
Illus. Page 8-10

ELECTRICAL

ITEM	PART NUMBER	QTY	BODY	MODEL	DESCRIPTION
------	-------------	-----	------	-------	-------------

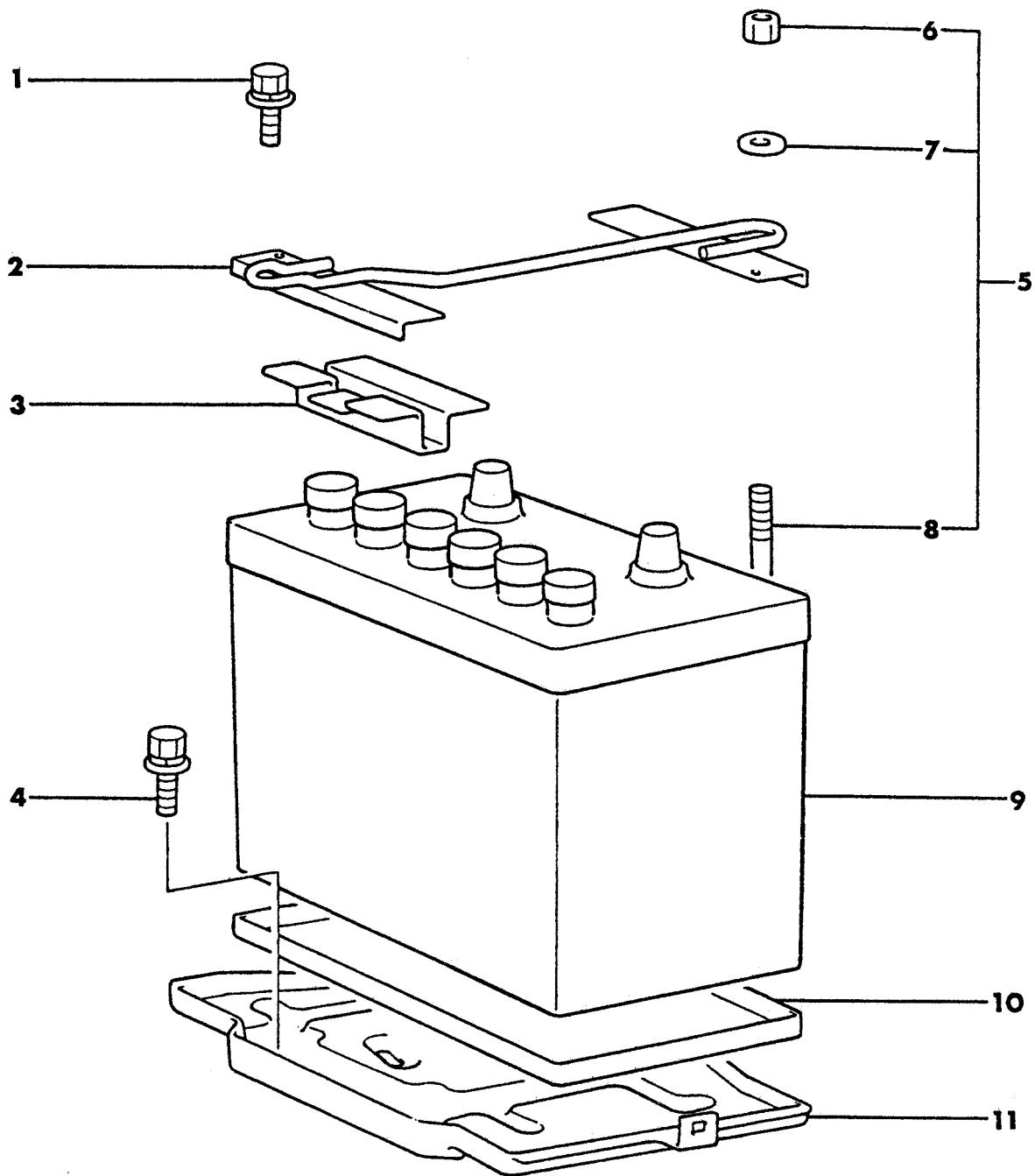
SWITCHES & ELECTRICAL CONTROLS 24-RWD-CONQUEST

45	MF14 0020				BOLT, Flange
46	MD06 3690				BRACKET, Connector

ENGINE:	Q=1500 cc	A=2000 cc	TRANS:	A=Automatic	4=4-Speed Manual
Blank=All	K=1600 cc (w/o Balance Shaft)	F=2600 cc (Car)	Blank=All	M=All Manual	5=5-Speed Manual
	W=2600 cc (Truck)				8=4 x 2 Manual

SERIES:	H=High	MODELS:	24 FWD=2-Dr Hatchback (Colt)	27 RWD-4WD=Pickup (Ram 50, Power Ram 50)
L=Low	P=Premium		24 RWD=2-Dr Hatchback (Conquest)	27 4WD=Sport Utility (Raider)
M=Medium	S=Special		41 FWD=4-Dr Sedan (Colt & Eagle Vista)	45 FWD=4-Dr Station Wagon (Colt)
				45 FWD-4WD=Station Wagon (Vista)

AR=Use as Required # =New Part Number -- =Non Illustrated Part Printed in U.S.A. FEBRUARY, 1989

7708 700**BATTERY TRAY
24 RWD-CONQUEST**

ELECTRICAL

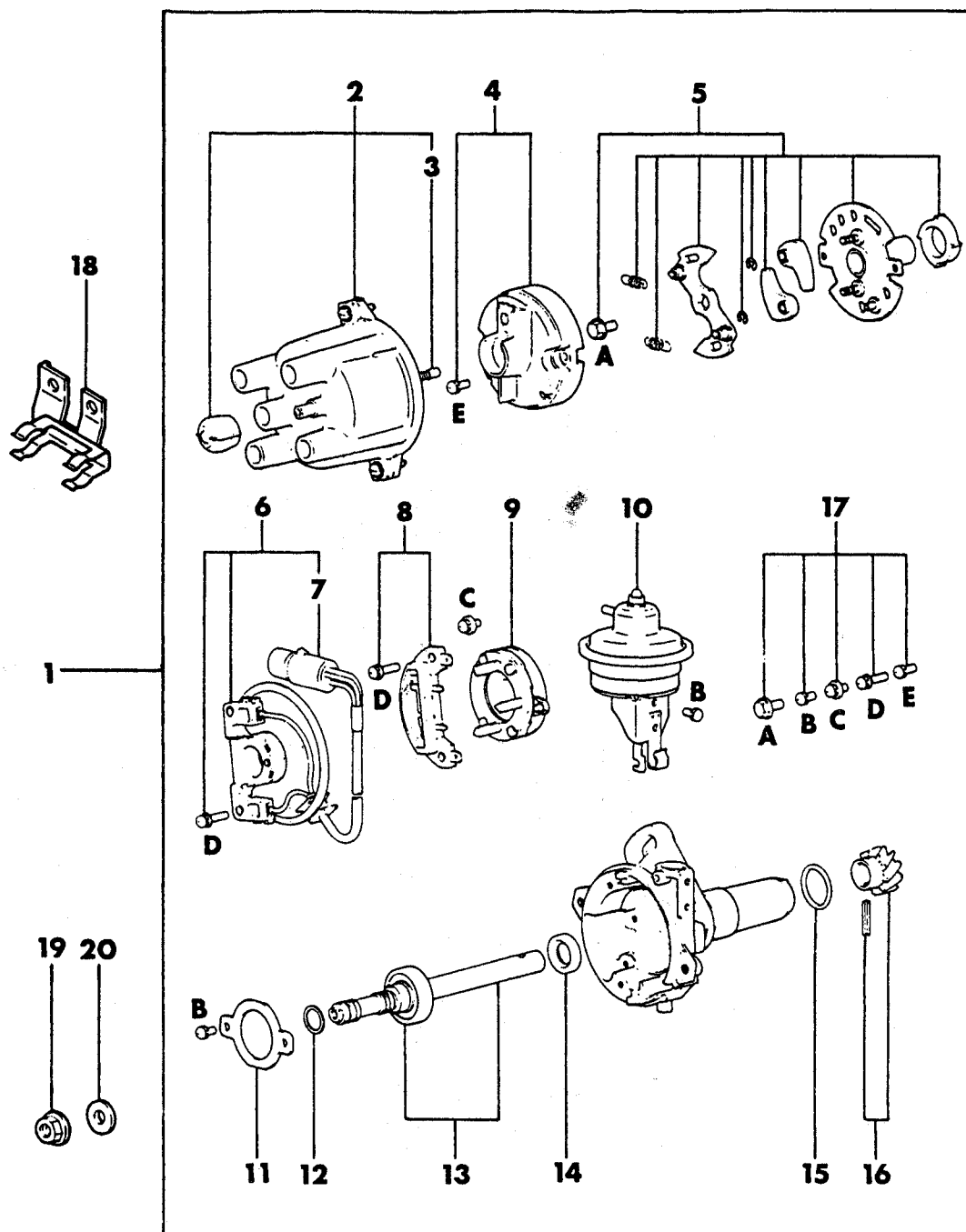
ITEM	PART NUMBER	QTY	BODY	MODEL	DESCRIPTION
------	-------------	-----	------	-------	-------------

BATTERY TRAY
24 RWD-CONQUEST

1	MS24 0143	1			BOLT, w/Washer
2	MB18 3879	1			HOLDER, Battery
3	MB11 3066	1			HOLDER, Battery
4	MS24 0145	4			BOLT, w/Washer
5	MB24 1251	1			L-BOLT PACKAGE
6					NUT, (Serv. in Item #5)
7					WASHER, Plain (Serv. in Item #5)
8					L-BOLT, (Serv. in Item #5)
9					BATTERY, (See Battery Catalog)
10	MB04 5993	1			SEAT, Battery
11	MB18 3878	1			TRAY, Battery

ENGINE:		Q=1500 cc	A=2000 cc	TRANS:		A=Automatic	4=4-Speed Manual
Blank=All		K=1600 cc (w/o Balance Shaft)	F=2600 cc (Car)	Blank=All		M=All Manual	5=5-Speed Manual
		W=2600 cc (Truck)					8=4 x 2 Manual
SERIES:		H=High	MODELS:		24 FWD=2-Dr Hatchback (Colt)	27 RWD-4WD=Pickup (Ram 50, Power Ram 50)	
L=Low	P=Premium		24 RWD=2-Dr Hatchback (Conquest)		27 4WD=Sport Utility (Raider)	45 FWD=4-Dr Station Wagon (Colt)	
M=Medium	S=Special		41 FWD=4-Dr Sedan (Colt & Eagle Vista)			45 FWD-4WD=Station Wagon (Vista)	
AR=Use as Required		# = New Part Number	- = Non Illustrated Part		Printed in U.S.A.		FEBRUARY, 1989

7708 1300

DISTRIBUTOR
F-ENGINE
24 RWD-CONQUEST

1987-88 IMPORT PARTS CATALOG

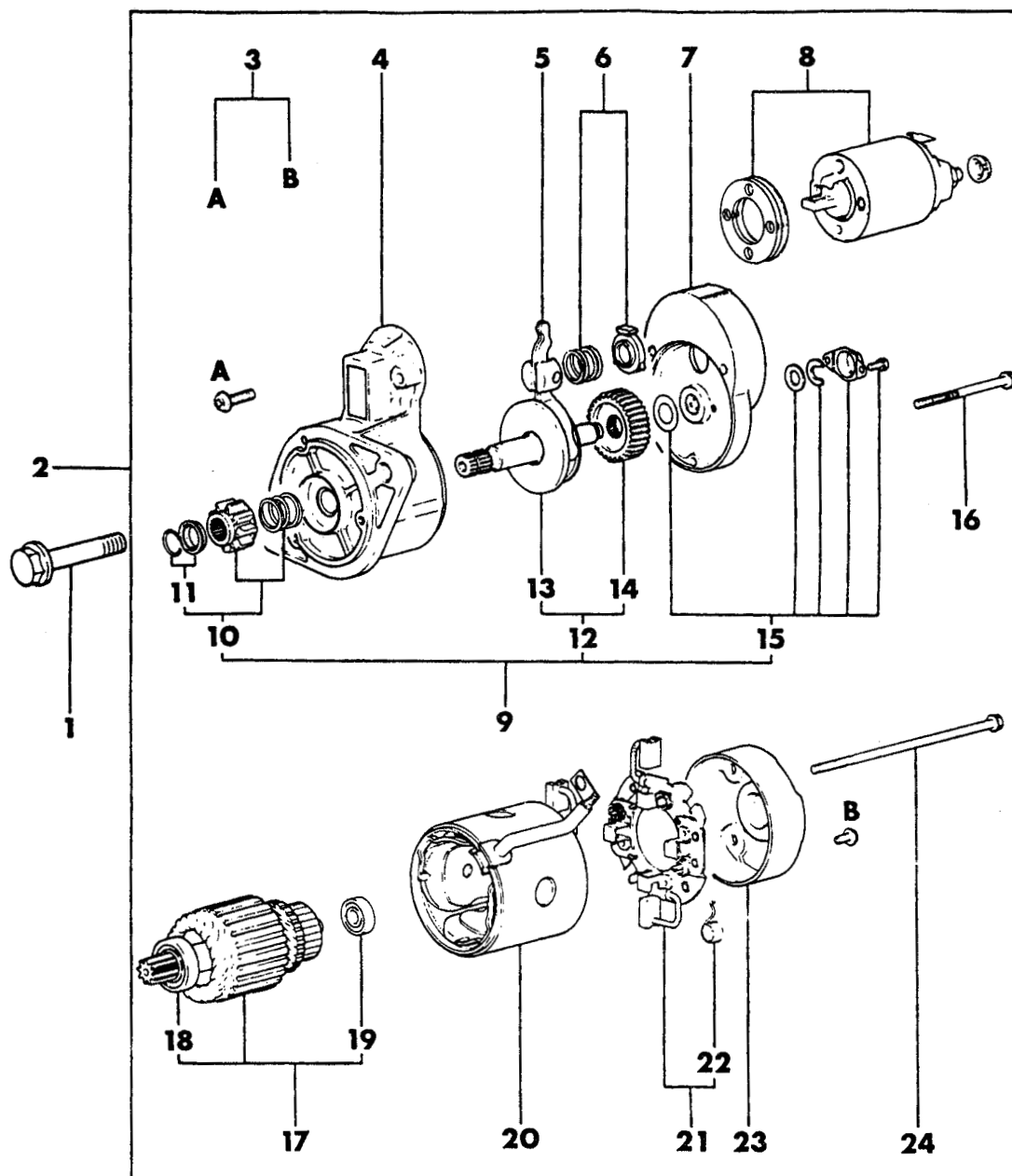
Figure 8-1300
Illus. Page 8-37

ELECTRICAL

ITEM	PART NUMBER	QTY	BODY	MODEL	DESCRIPTION
DISTRIBUTOR					
F-ENGINE					
24 RWD-CONQUEST					
1	MD10 9937	1			DISTRIBUTOR
	MD10 9938	1			w/Intercooler
	MD11 9754				1988
2	MD60 7466	1			CAP
	MD61 1605				w/MD119754
3	MD60 2757	1			CARBON ASSEMBLY, Contact
4	MD60 7734	1			ROTOR ASSEMBLY
5	MD60 7784	1			GOVERNOR SET, w/MD109937
	MD61 1368	1			w/MD109938, MD119754
6	MD61 1532	1			PICK-UP SET
7	MD61 1533	1			WIRE, Lead
8	MD60 7588	1			FRAME SET
9	MD60 7470	1			BREAKER ASSEMBLY
10	MD61 1360	1			VACUUM SET
	MD61 1769				w/MD119754
11	MD60 7359	1			PLATE
12	MD60 7472	1			WASHER
13	MD60 7468	1			SHAFT ASSEMBLY
14	MD60 7405	1			OIL SEAL
15	MD60 2412	1			O-RING
16	MD60 7226	1			COUPLING SET
17	MD60 7469	1			SCREW SET
18	MD04 1762	1			BRACKET, Connector
19	MF43 4104	1			NUT, Flange
20	MD00 1521	1			WASHER, Special

ENGINE:	Q=1500 cc	A=2000 cc	TRANS:	A=Automatic	4=4-Speed Manual		
Blank=All	K=1600 cc (w/o Balance Shaft)	F=2600 cc (Car)	Blank=All	M=All Manual	5=5-Speed Manual		
	W=2600 cc (Truck)				8=4 x 2 Manual		
SERIES:	H=High	MODELS: 24 FWD=2-Dr Hatchback (Colt)				27 RWD-4WD=Pickup (Ram 50, Power Ram 50)	
L=Low	P=Premium	24 RWD=2-Dr Hatchback (Conquest)				27 4WD=Sport Utility (Raider)	45 FWD=4-Dr Station Wagon (Colt)
M=Medium	S=Special	41 FWD=4-Dr Sedan (Colt & Eagle Vista)				45 FWD-4WD=Station Wagon (Vista)	
AR=Use as Required		#=New Part Number		--=Non Illustrated Part		Printed in U.S.A.	FEBRUARY, 1989

7708 1900

STARTER
F-ENGINE
CONQUEST

1987-88 IMPORT PARTS CATALOG

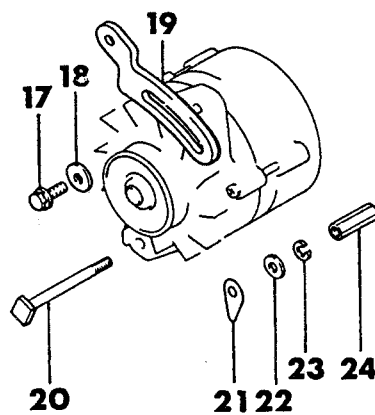
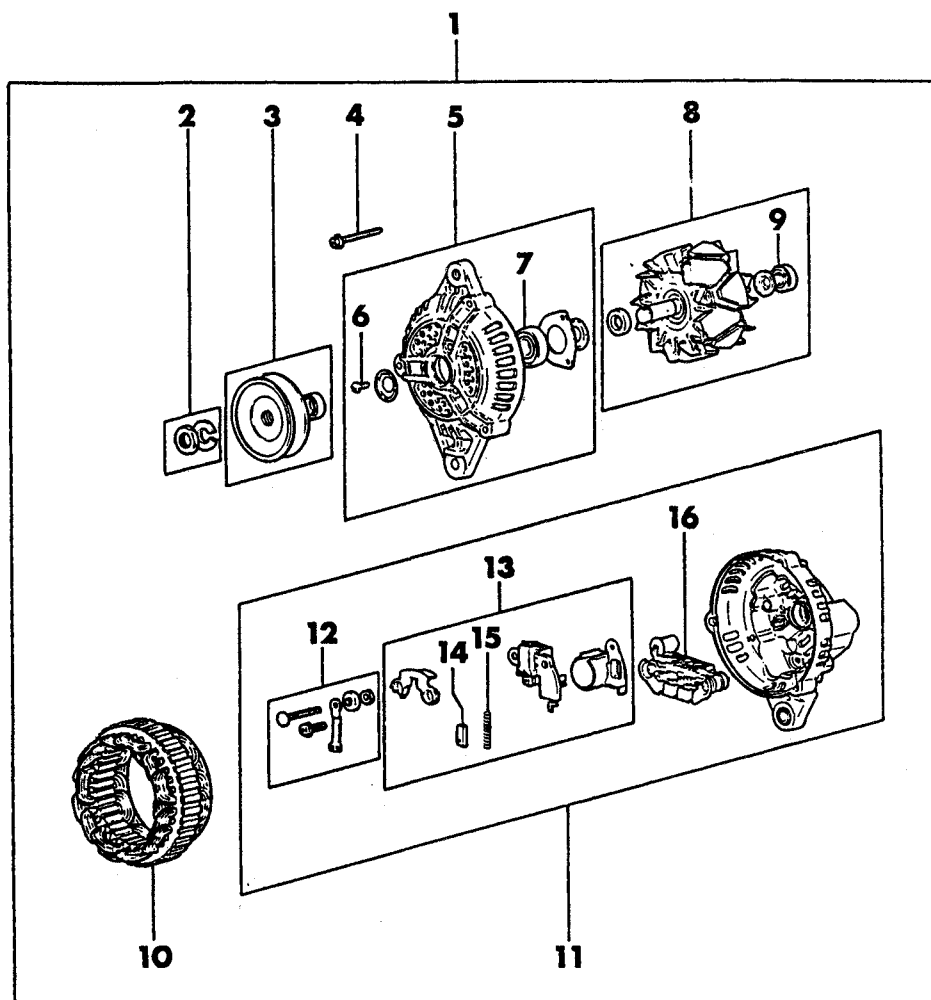
Figure 8-1900
Illus. Page 8-49

ELECTRICAL

ITEM	PART NUMBER	QTY	BODY	MODEL	DESCRIPTION
STARTER					
F-ENGINE					
CONQUEST					
1	MF14 0270				BOLT, Flange
2	MD07 2585				STARTER ASSEMBLY
3	MD60 7432				SCREW SET
4	MD60 7928				BRACKET, Front
5	MD60 7410				LEVER SET
6	MD60 2963				SPRING SET
7	MD60 7548				BRACKET, Center
8	MD60 7549				SWITCH
9	MD60 7544				SHAFT, Clutch Set
10	MD60 7545				PINION SET
11	MD60 7416				STOPPER SET
12	MD60 7539				GEAR SET
13	MD60 7540				SHAFT, Pinion
14	MM50 2341				GEAR SET
15	MM50 2342				COVER SET
16	MM50 2332				SCREW, w/Washer
17	MD60 7413				ARMATURE SET
18	MM50 2334				BEARING, Front
19	MM50 2335				BEARING, Rear
20	MD60 7419				YOKE
21	MD60 7420				HOLDER, Brush
22	MD60 2210				SPRING, Brush
23	MM50 2346				BRACKET, Rear
24	MD60 7421				BOLT, Through

ENGINE:		Q=1500 cc	A=2000 cc	TRANS:	A=Automatic	4=4-Speed Manual
Blank=All		K=1600 cc (w/o Balance Shaft)	F=2600 cc (Car)	Blank=All	M=All Manual	5=5-Speed Manual
		W=2600 cc (Truck)				8=4 x 2 Manual
SERIES:	H=High	MODELS: 24 FWD=2-Dr Hatchback (Colt) 27 RWD-4WD=Pickup (Ram 50, Power Ram 50)				
L=Low	P=Premium	24 RWD=2-Dr Hatchback (Conquest) 27 4WD=Sport Utility (Raider) 45 FWD=4-Dr Station Wagon (Colt)				
M=Medium	S=Special	41 FWD=4-Dr Sedan (Colt & Eagle Vista) 45 FWD-4WD=Station Wagon (Vista)				
AR=Use as Required		# =New Part Number	- =Non Illustrated Part		Printed in U.S.A.	FEBRUARY, 1989

ALTERNATOR
F-ENGINE
CONQUEST



1987-88 IMPORT PARTS CATALOG

Figure 8-2400
Illus. Page 8-63

ELECTRICAL

ITEM	PART NUMBER	QTY	BODY	MODEL	DESCRIPTION
ALTERNATOR F-ENGINE CONQUEST					
1	MD10 5339				ALTERNATOR
	MD10 6713				w/Intercooler
	MD12 5569				1988
2	MM50 2340				NUT SET
3	MD61 1373				PULLEY
	MD61 1265				w/MD125569
4	MD60 7963				BOLT SET, Through
5	MD61 1227				BRACKET, Front
6	MD61 1034				SCREW SET
7	MD61 1343				BEARING, Front
8	MD61 1418				ROTOR, w/MD105339
	MD61 1273				w/MD106713, MD125569
9	MD61 1150				BEARING, Rear
10	MD61 1417				STATOR, w/MD105339
	MD61 1422				w/MD106713, MD125569
11	MD61 1440				BRACKET, Rear
	MD61 1498				w/MD106713, MD125569
12	MD61 1431				TERMINAL SET
13	MD61 1432				IC REGULATOR
14	MD61 1035				BRUSH
15	MD60 2227				SPRING, Brush
16	MD61 1256				RECTIFIER, w/MD105339
	MD61 1307				w/MD106713, MD125569
17	MF14 0025				BOLT, Flange
18	MD00 1521				WASHER
19	MD02 7751				BRACE, Alternator
20	MD10 2126				BOLT
21	MD00 1517				SHIM
22	MF45 0005				WASHER, Plain
23	MF45 0405				WASHER, Spring
24	MD00 1516				NUT

ENGINE:		Q=1500 cc	A=2000 cc	TRANS:	A=Automatic	4=4-Speed Manual
Blank=All		K=1600 cc (w/o Balance Shaft)	F=2600 cc (Car)	Blank=All	M=All Manual	5=5-Speed Manual
		W=2600 cc (Truck)				8=4 x 2 Manual
SERIES:	H=High	MODELS: 24 FWD=2-Dr Hatchback (Colt)				
L=Low	P=Premium	24 RWD=2-Dr Hatchback (Conquest) 27 4WD=Sport Utility (Raider) 45 FWD=4-Dr Station Wagon (Colt)				
M=Medium	S=Special	41 FWD=4-Dr Sedan (Colt & Eagle Vista) 45 FWD=4WD=Station Wagon (Vista)				

AR=Use as Required

=New Part Number

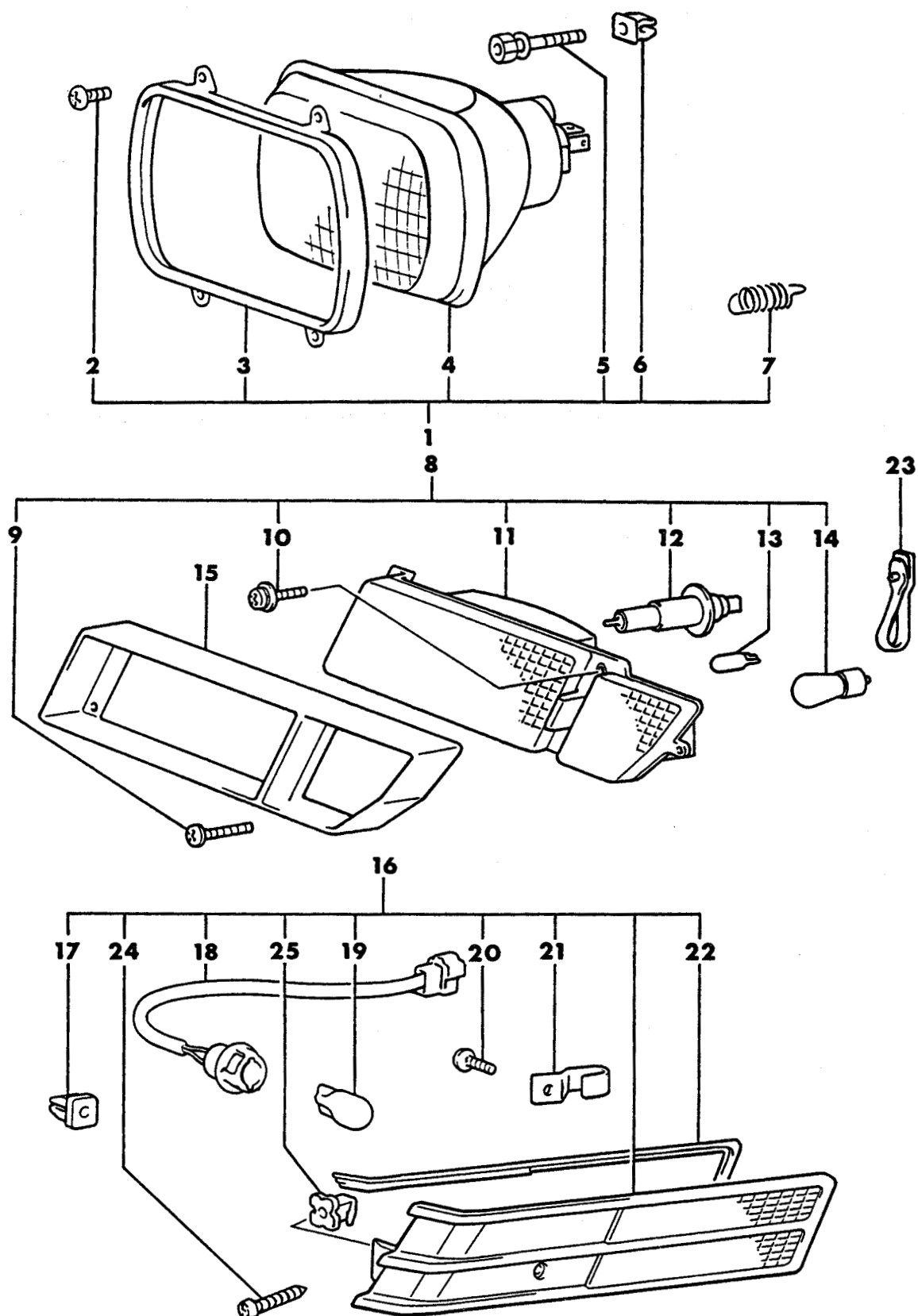
-- =Non Illustrated Part

Printed in U.S.A.

FEBRUARY, 1989

LAMPS--HEAD & FRONT EXTERIOR
24 RWD CONQUEST

7708 3000 A



1987-88 IMPORT PARTS CATALOG

Figure 8-3000

Illus. Page 8-77

ELECTRICAL

ITEM	PART NUMBER	QTY	BODY	MODEL	DESCRIPTION
------	-------------	-----	------	-------	-------------

LAMPS--HEAD & FRONT EXTERIOR 24 RWD CONQUEST

1	MB18 5653	1			HEADLAMP KIT, Lt.
	MB18 5654	1			Rt.
2		8			SCREW, Machine, (Serv. in Item #1)
3	MB14 0585	2			RING, Retaining
4	MS82 0174	2			SEALED BEAM UNIT
5	MB26 2735	4			SCREW, Adjusting
6		4			GROMMET, Screw (Serv. in Item #1)
7	MB26 2736	2			SPRING, Extension
8	MB37 7881	1			LAMP PACKAGE, Front Turn & Fog Lt.
	MB37 7882	1			Rt.
9	MB35 9439	4			SCREW, Tapping
10	MS35 0125	6			SCREW, w/Washer
11					LAMP UNIT, Front Turn & Fog, (Serv. in Item #8)
12	MB38 1005	2			BULB, Lamp
13	MS82 0087	2			BULB, Lamp
14	MS82 0043	2			BULB, Lamp
15	MB44 5049				BEZEL, T/Sig. Black Lt.
	MB44 5055				Blue Lt.
	MB44 5057				White Lt.
	MB45 3946				Silver Lt.
	MB49 3682				Gold Lt.
	MB49 3683				Red w/Intercooler
	MB70 7776				Beige Lt.
	MB70 7777				Red Lt. w/o Intercooler
	MB44 5058				Black Rt.
	MB44 5064				Blue Rt.
	MB44 5066				White Rt.
	MB45 3950				Silver Rt.
	MB49 3685				Gold Rt.
	MB49 3686				Red w/Intercooler
	MB70 7778				Beige Rt.
	MB70 7779				Red Rt. w/o Intercooler
	MB71 7711				Lt. White, 1988
	MB71 7710				Lt. Yellow, 1988
	MB71 7713				Lt. Silver, 1988
	MB71 7714				Lt. Blue, 1988
	MB71 7715				Lt. Maroon, 1988
	MB71 7717				Rt. White, 1988
	MB71 7716				Rt. Yellow, 1988
	MB71 7719				Rt. Silver, 1988
	MB71 7720				Rt. Blue, 1988
	MB71 7721				Rt. Maroon, 1988
16	MB37 7981	1			LAMP KIT, Side Marker Lt. Black w/Intercooler
	MB37 7983				Red Lt. w/Intercooler
	MB52 7373				Beige Lt. w/Intercooler
	MB52 7375				White Lt. w/Intercooler
	MB52 7377				Gold Lt. w/Intercooler
	MB37 7921				Black Lt.
	MB37 7931				Blue Lt.
	MB37 7937				White Lt.
	MB37 7939				Silver Lt.

ENGINE:		Q=1500 cc	A=2000 cc	TRANS:	A=Automatic	4=4-Speed Manual
Blank=All		K=1600 cc (w/o Balance Shaft)	F=2600 cc (Car)	Blank=All	M=All Manual	5=5-Speed Manual
		W=2600 cc (Truck)				8=4 x 2 Manual
SERIES:		H=High	MODELS:		24 FWD=2-Dr Hatchback (Colt)	27 RWD=4WD=Pickup (Ram 50, Power Ram 50)
L=Low		P=Premium			24 RWD=2-Dr Hatchback (Conquest)	27 4WD=Sport Utility (Raider)
M=Medium		S=Special			41 FWD=4-Dr Sedan (Colt & Eagle Vista)	45 FWD=4-Dr Station Wagon (Colt)
						45 FWD=4WD=Station Wagon (Vista)
AR=Use as Required		#=New Part Number	--=Non Illustrated Part		Printed in U.S.A.	
					FEBRUARY, 1989	

1987-88 IMPORT PARTS CATALOG

Figure 8-3000
Illus. Page 8-78

ELECTRICAL

ITEM	PART NUMBER	QTY	BODY	MODEL	DESCRIPTION
------	-------------	-----	------	-------	-------------

LAMPS--HEAD & FRONT EXTERIOR 24 RWD CONQUEST

	MB37 7945				Gold Lt.
	MB52 7379				Beige Lt.
	MB52 7381				Red Lt.
	MB52 7639				Blue Lt. w/Intercooler
	MB52 7641				Silver Lt. w/Intercooler
	MB37 7982				Black Rt. w/Intercooler
	MB37 7984				Red Rt. w/Intercooler
	MB52 7374				Beige Rt. w/Intercooler
	MB52 7376				White Rt. w/Intercooler
	MB52 7378				Gold Rt. w/Intercooler
	MB37 7922				Black Rt.
	MB37 7932				Blue Rt.
	MB37 7938				White Rt.
	MB37 7940				Silver Rt.
	MB37 7946				Gold Rt.
	MB52 7380				Beige Rt.
	MB52 7382				Red Rt.
	MB52 7640				Blue Rt.
	MB52 7642				Silver Rt. w/Intercooler
	MB59 7575				Lt. Yellow, 1988
	MB59 7579				Lt. Silver, 1988
	MB59 7581				Lt. Blue, 1988
	MB59 7583				Lt. Maroon, 1988
	MB59 7577				Lt. White, 1988
	MB59 7576				Rt. Yellow, 1988
	MB59 7580				Rt. Silver, 1988
	MB59 7582				Rt. Blue, 1988
	MB59 7584				Rt. Maroon, 1988
	MB59 7578				Rt. White, 1988
17					GROMMET, Screw, (Serv. in Item #16)
18	MB26 2479	2			SOCKET ASSEMBLY, Side Turn Signal 1987
	MB51 0651				1988
19	MS82 0085	2			BULB, Lamp
20	MF45 3015	2			SCREW, Tapping
21	MB26 2480	2			STAY, Side Turn Signal
22	MB26 2477	1			SPACER, Side Turn Sig. Lt.
	MB26 2478	1			Rt.
	MB54 1273				Lt. w/Intercooler
	MB54 1274				Rt. w/Intercooler
23	MS47 0402				BAND, Cable
24					SCREW, Tapping, (Serv in Item #16)
25					GROMMET, Screw, (Serv. in Item #16)

ENGINE:	Q=1500 cc	A=2000 cc	TRANS:	A=Automatic	4=4-Speed Manual
Blank=All	K=1600 cc (w/o Balance Shaft)	F=2600 cc (Car)	Blank=All	M=All Manual	5=5-Speed Manual
	W=2600 cc (Truck)				8=4 x 2 Manual

SERIES:	H=High	MODELS:	24 FWD=2-Dr Hatchback (Colt)	27 RWD-4WD=Pickup (Ram 50, Power Ram 50)
L=Low	P=Premium		24 RWD=2-Dr Hatchback (Conquest)	27 4WD=Sport Utility (Raider)
M=Medium	S=Special		41 FWD=4-Dr Sedan (Colt & Eagle Vista)	45 FWD=4-Dr Station Wagon (Colt)
				45 FWD-4WD=Station Wagon (Vista)

AR=Use as Required

= New Part Number

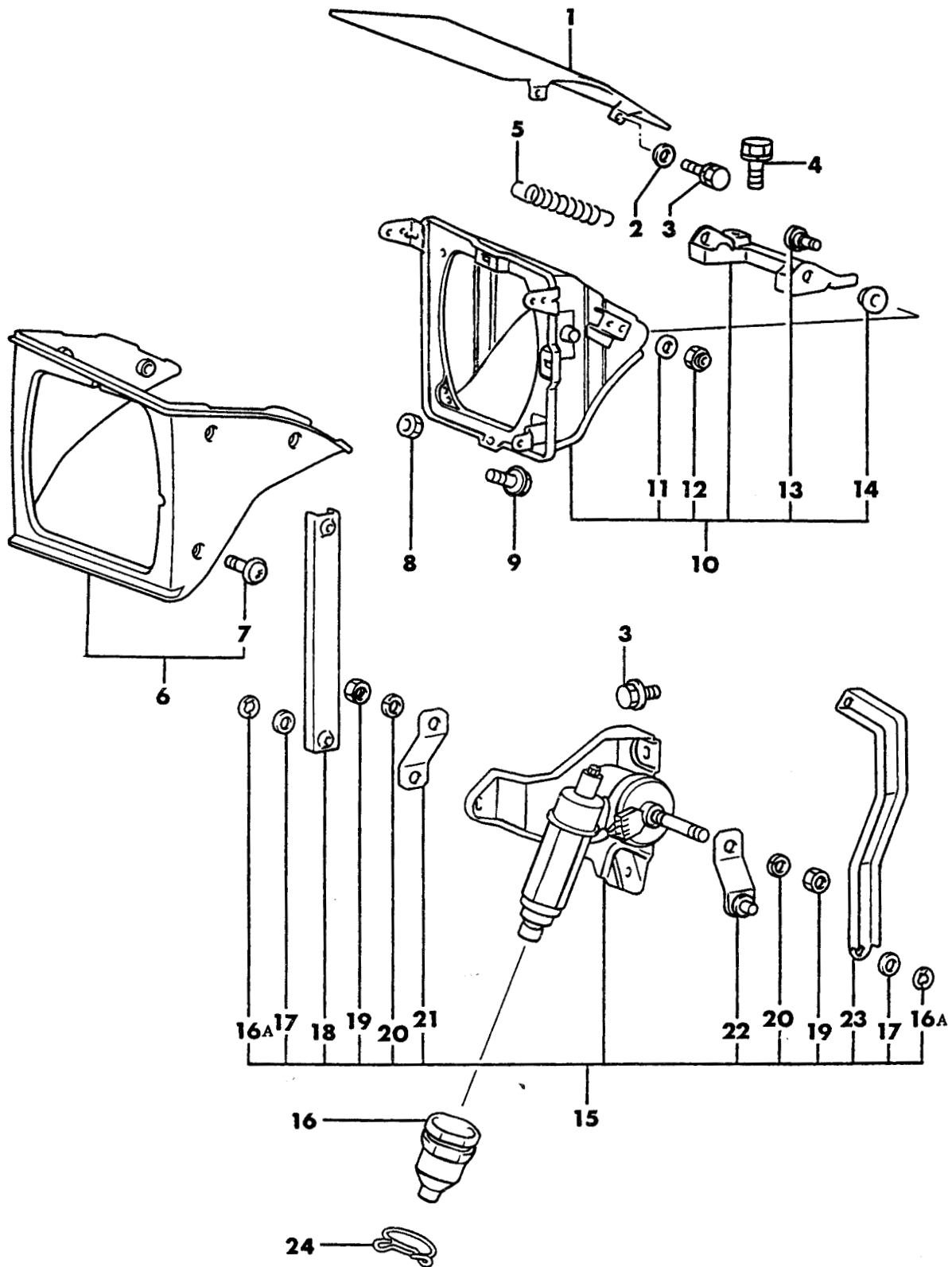
— = Non Illustrated Part

Printed in U.S.A.

FEBRUARY, 1989

LAMPS--CONCEALED FRONT
24 RWD CONQUEST

7708 3100



1987-88 IMPORT PARTS CATALOG

Figure 8-3100
illus. Page 8-81

ITEM	PART NUMBER	QTY	BODY	MODEL	DESCRIPTION
------	-------------	-----	------	-------	-------------

LAMPS--CONCEALED FRONT 24 RWD CONQUEST

1	MB28 6857	1			DOOR, Headlamp Lt
---	-----------	---	--	--	-------------------

2	MF45 0003	8			WASHER, Plain
---	-----------	---	--	--	---------------

3	MS24 0036	8			BOLT, w/Washer
---	-----------	---	--	--	----------------

4	MS24 0121	10			BOLT, w/Washer
---	-----------	----	--	--	----------------

5	MB18 3601	2			SPRING
---	-----------	---	--	--	--------

6	MB24 1633	1			BEZEL PACKAGE, Headlamp Lt
---	-----------	---	--	--	----------------------------

	MB24 1634	1			Rt
--	-----------	---	--	--	----

7	MS20 0327	10			SCREW, Flange
---	-----------	----	--	--	---------------

8	MF43 0724	2			NUT, Jam
---	-----------	---	--	--	----------

9	MB18 3589	2			STOPPER
---	-----------	---	--	--	---------

10	MB31 2031	1			HOUSING ASSEMBLY, Headlamp Lt
----	-----------	---	--	--	-------------------------------

	MB31 2032	1			Rt
--	-----------	---	--	--	----

11	MF45 0004	4			WASHER, Plain
----	-----------	---	--	--	---------------

12	MF45 0003	4			NUT, Self Locking
----	-----------	---	--	--	-------------------

13	MB18 3602	4			HINGE SHAFT
----	-----------	---	--	--	-------------

14	MB18 3603	4			BUSHING
----	-----------	---	--	--	---------

15	MB50 9653	1			MOTOR ASSEMBLY, Lt., Up to 6-31-86
----	-----------	---	--	--	------------------------------------

	MB50 9654	1			Rt., Up to 6-31-86
--	-----------	---	--	--	--------------------

	# MB51 0857				Lt., Alt. 6-31-86
--	-------------	--	--	--	-------------------

	# MB51 0858				Rt., Alt. 6-31-86
--	-------------	--	--	--	-------------------

16	MB28 5951	2			CAP, Rubber
----	-----------	---	--	--	-------------

16A	MF52 2407	4			SNAP RING
-----	-----------	---	--	--	-----------

17	MB28 5950	2			WASHER
----	-----------	---	--	--	--------

18	MB28 5947	2			LINK
----	-----------	---	--	--	------

19	MF43 0725	4			NUT, Jam
----	-----------	---	--	--	----------

20	MF45 0405	4			WASHER, Spring
----	-----------	---	--	--	----------------

21	MB28 5948	2			ARM
----	-----------	---	--	--	-----

22	MB28 5949	2			ARM
----	-----------	---	--	--	-----

23	MB28 5945	1			LINK, Lt.
----	-----------	---	--	--	-----------

24	MB35 4844	2			CLIP
----	-----------	---	--	--	------

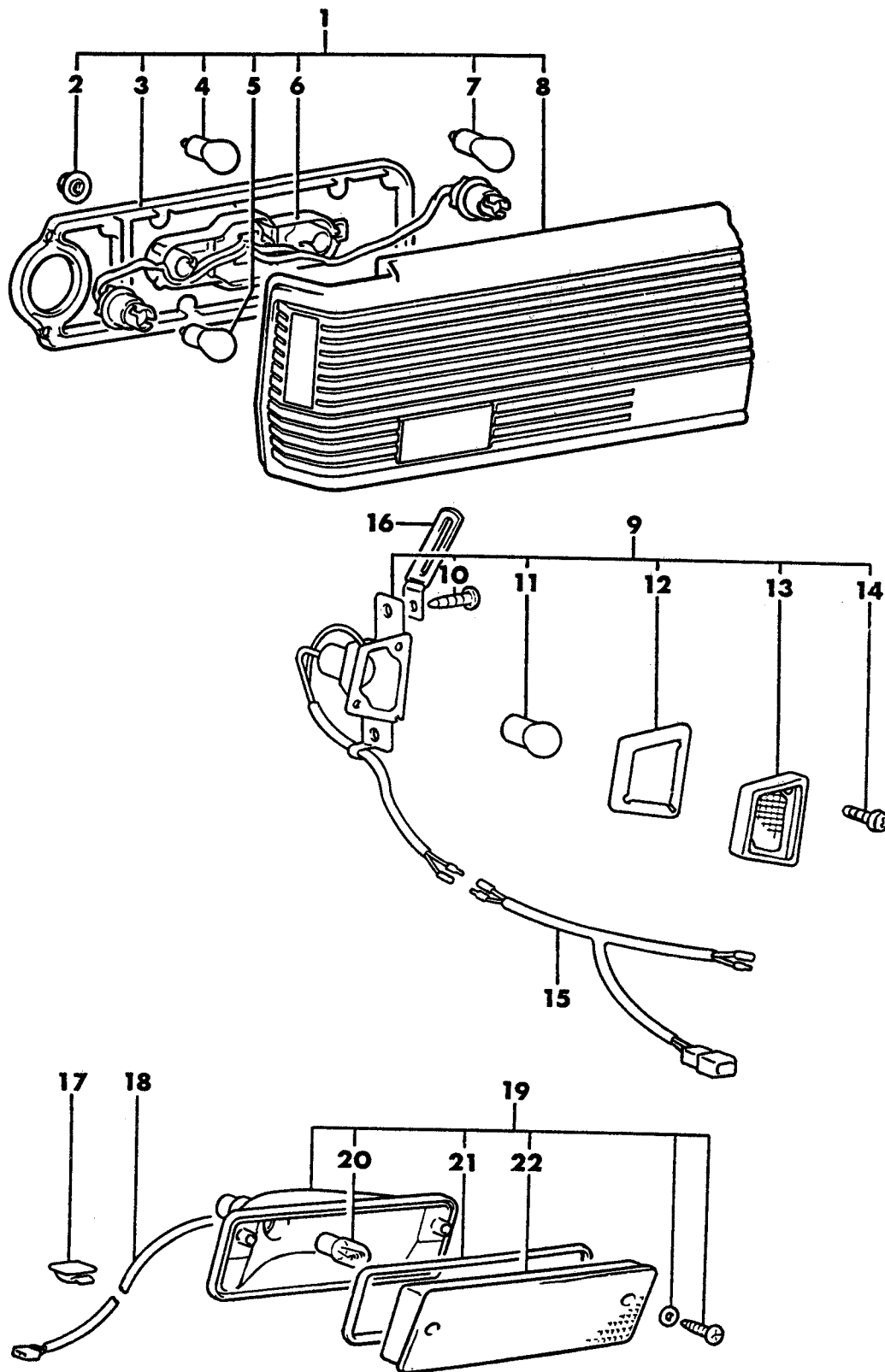
ENGINE:					
Q=1500 cc		A=2000 cc			
K=1600 cc (w/o Balance Shaft)		F=2600 cc (Car)			
TRANS:					
A=Automatic		M=All Manual			
4=4-Speed Manual					
5=5-Speed Manual					
8=4 x 2 Manual					

SERIES:					
H=High					
P=Premium					
S=Special					
MODELS:					
24 FWD=2-Dr Hatchback (Coit)		27 RWD=4WD=Pickup (Ram 50, Power Ram 50)			
24 RWD=2-Dr Hatchback (Conquest)		27 4WD=Sport Utility (Raider)			
41 FWD=4-Dr Sedan (Coit & Eagle Vista)		45 FWD=4-Dr Station Wagon (Coit)			
		45 FWD=4WD=Station Wagon (Vista)			

AR=Use as Required # = New Part Number - = Non Illustrated Part Printed in U.S.A. FEBRUARY, 1989

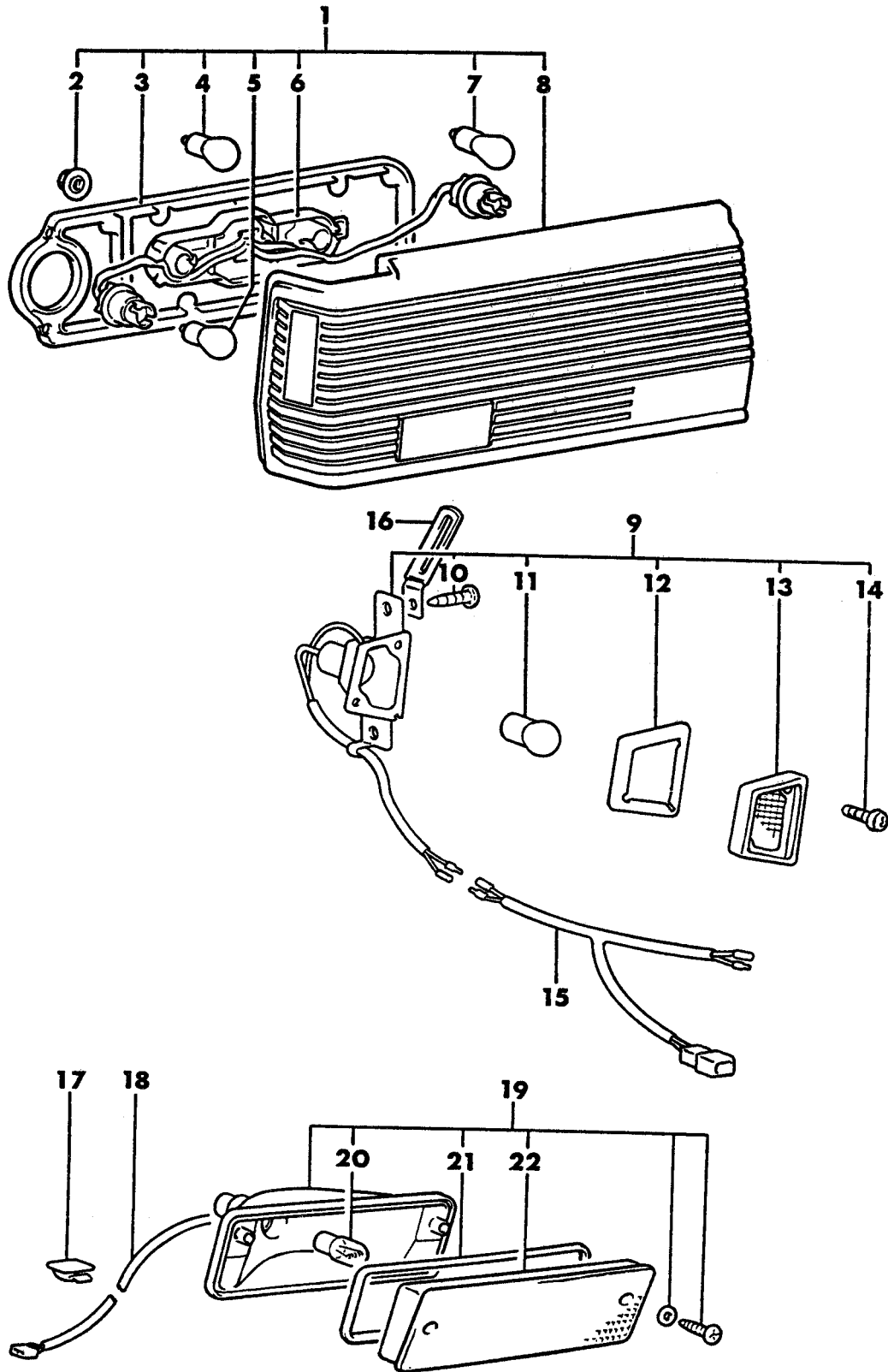
LAMPS--REAR EXTERIOR
24 RWD CONQUEST

7708 3200



LAMPS--REAR EXTERIOR
24 RWD CONQUEST

7708 3200



1987-88 IMPORT PARTS CATALOG

Figure 8-3200
Illus. Page 8-83

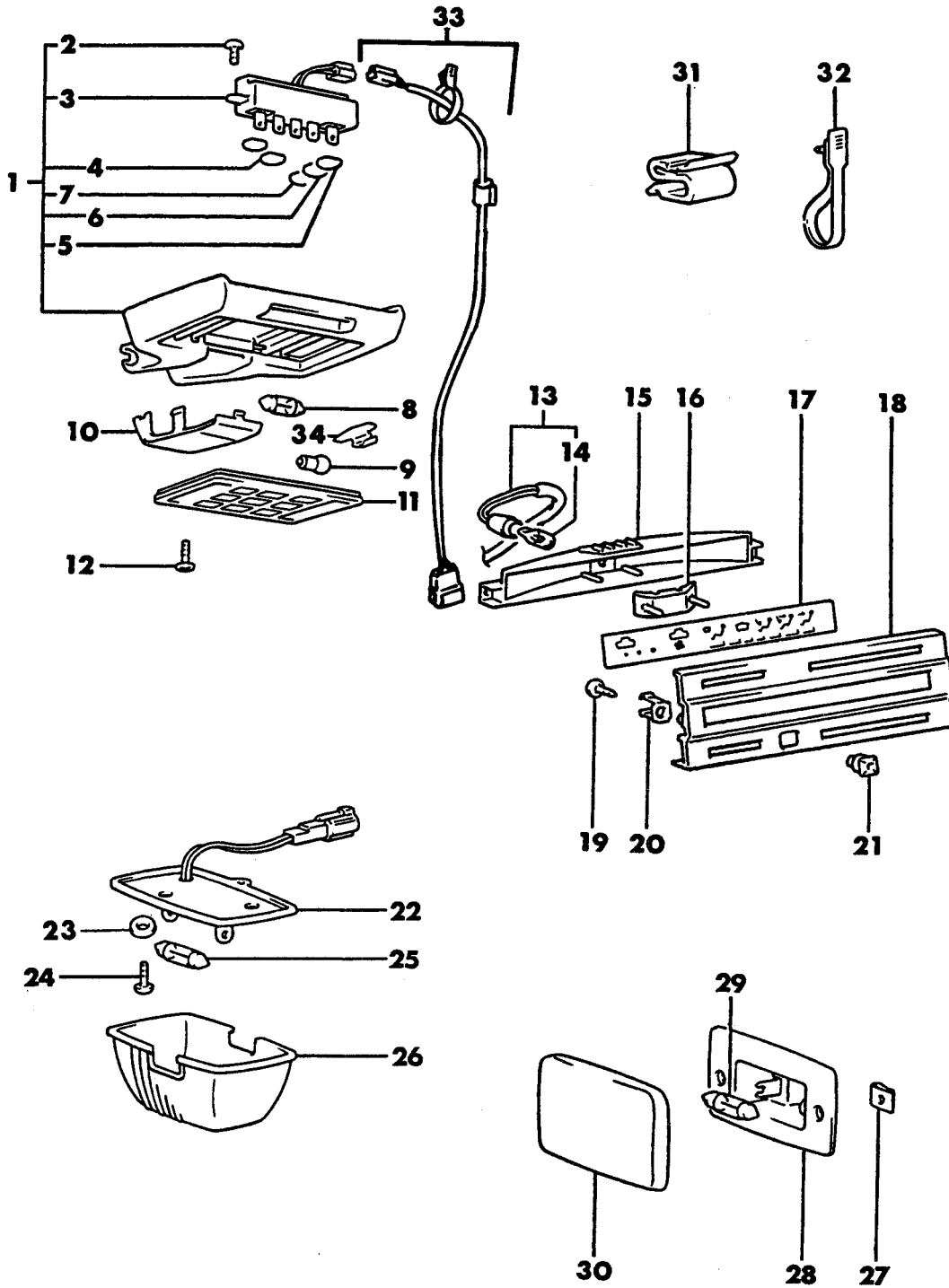
ELECTRICAL

ITEM	PART NUMBER	QTY	BODY	MODEL	DESCRIPTION
LAMPS--REAR EXTERIOR					
24 RWD CONQUEST					
1	MB28 3905	1			LAMP PACKAGE, Rear Combination Lt.
	MB28 3906	1			Rt.
2	MS44 0522	12			NUT, w/Washer
3	MB38 2476	2			SEAT PACKING, Rear
4	MS82 0035	4			BULB, Lamp
5	MF82 0182	2			BULB, Lamp
6	MB38 2477	1			BACK COVER ASSEMBLY, Lt.
	MB38 2478	1			Rt.
7	MS82 0043	2			BULB, Lamp
8	MB33 8199	1			UNIT ASSEMBLY, Rear Lt.
	MB33 8200	1			Rt.
9	MB37 7875	1			LAMP PACKAGE, License, Lt.
	MB37 7876	1			Rt.
10	MF45 3031	4			SCREW, Tapping
11	MF82 0182	2			BULB, Lamp
12	MB18 3630	1			GASKET, Lt.
	MB18 3631	1			Rt.
13	MB18 3578	1			LENS, Lt.
	MB18 3579	1			Rt.
14	MB18 3632	4			SCREW
15	MB50 9310	1			HARNESS, License
16	MS47 0067	1			CLIP
17	MB10 8529	2			CLIP, Harness
18	MB48 7138	1			HARNESS, Stop Lamp
19	MB48 7139	1			LAMP ASSEMBLY, Hi-Mtd. Stop
20	MS82 0078	1			BULB, 12V-13W
21	MB48 7368	1			GASKET
22	MB48 7366	1			LENS

ENGINE:		Q=1500 cc	A=2000 cc	TRANS:	A=Automatic	4=4-Speed Manual
Blank=All		K=1600 cc (w/o Balance Shaft)	F=2600 cc (Car)	Blank=All	M=All Manual	5=5-Speed Manual
		W=2600 cc (Truck)				8=4 x 2 Manual
SERIES:	H=High	MODELS: 24 FWD=2-Dr Hatchback (Colt)		27 RWD-4WD=Pickup (Ram 50, Power Ram 50)		
L=Low	P=Premium	24 RWD=2-Dr Hatchback (Conquest)		27 4WD=Sport Utility (Raider) 45 FWD=4-Dr Station Wagon (Colt)		
M=Medium	S=Special	41 FWD=4-Dr Sedan (Colt & Eagle Vista)		45 FWD-4WD=Station Wagon (Vista)		
AR=Use as Required		# =New Part Number	- =Non Illustrated Part		Printed in U.S.A.	FEBRUARY, 1989

LAMPS--DOME-DOOR & LUGGAGE
24 RWD CONQUEST

7708 4000 B



1987-88 IMPORT PARTS CATALOG

Figure 8-4000
Illus. Page 8-99

ELECTRICAL

ITEM	PART NUMBER	QTY	BODY	MODEL	DESCRIPTION
LAMPS--DOME-DOOR & LUGGAGE 24 RWD CONQUEST					
1	MB18 3640	1			BODY, Lamp, Red
	MB44 5004	1			Black
	MB71 7518				Beige
2	MB30 6989	5			SCREW, Tapping
3	MB18 3990	1			SWITCH ASSEMBLY
4	MB18 3644	1			KNOB, Off
5	MB18 3643	2			KNOB, Spot
6	MB18 3646	1			KNOB, On
7	MB18 3645	1			KNOB, Door
8	MF82 0512	1			BULB, Lamp
9	MF82 0062	2			BULB, Lamp
10	MB18 3642	1			COVER, Mirror, Red
	MB44 5005	1			Black
	MB71 7519				Beige
11	MB18 3550	1			COVER, Dome Lamp
12	MF45 3033	2			SCREW, Tapping
13	MB18 6334	1			HARNESS, H/C Illumination
14	MS82 0083	1			BULB, Lamp
15	MB18 6330	1			CASE, Lamp
16	MB18 6332	1			COVER, Lamp
17	MB42 4922	1			PANEL, H/C Display
18	MB18 6326	1			PANEL, Heater Control
19	MF45 3316	2			SCREW, Tapping
20	MB18 6333	2			SPRING, H/C Panel
21	MB17 0105	1			PLUG
22	MB50 9408	1			BODY, Luggage Compt., Lamp
23	MS45 0032	2			WASHER, Plain
24	MS45 0930	2			SCREW, Tapping
25	MS82 0071	1			BULB, Lamp
26	MT13 8325	1			LENS, Lamp
27	MB03 7975	4			NUT, Speed
28	MB33 7927	2			BODY, Door Lamp
29	MS82 0071	2			BULB, Lamp
30	MB33 7920	2			LENS, Door Lamp
31	MB07 0440				CLIP
32	MS47 0401				BAND, Cable
33	MB51 0688				HARNESS, Dome Lamp
34	MB18 3576				SHADE, Dome Lamp Lt.
	MB18 3577				Rt.

ENGINE:	Q=1500 cc	A=2000 cc	TRANS:	A=Automatic	4=4-Speed Manual
Blank=All	K=1600 cc (w/o Balance Shaft)	F=2600 cc (Car)	Blank=All	M=All Manual	5=5-Speed Manual
	W=2600 cc (Truck)				8=4 x 2 Manual

SERIES:	H=High	MODELS:	24 FWD=2-Dr Hatchback (Colt)	27 RWD-4WD=Pickup (Ram 50, Power Ram 50)
L=Low	P=Premium		24 RWD=2-Dr Hatchback (Conquest)	27 4WD=Sport Utility (Raider)
M=Medium	S=Special		41 FWD=4-Dr Sedan (Colt & Eagle Vista)	45 FWD=4-Dr Station Wagon (Colt)
				45 FWD-4WD=Station Wagon (Vista)

AR=Use as Required

= New Part Number

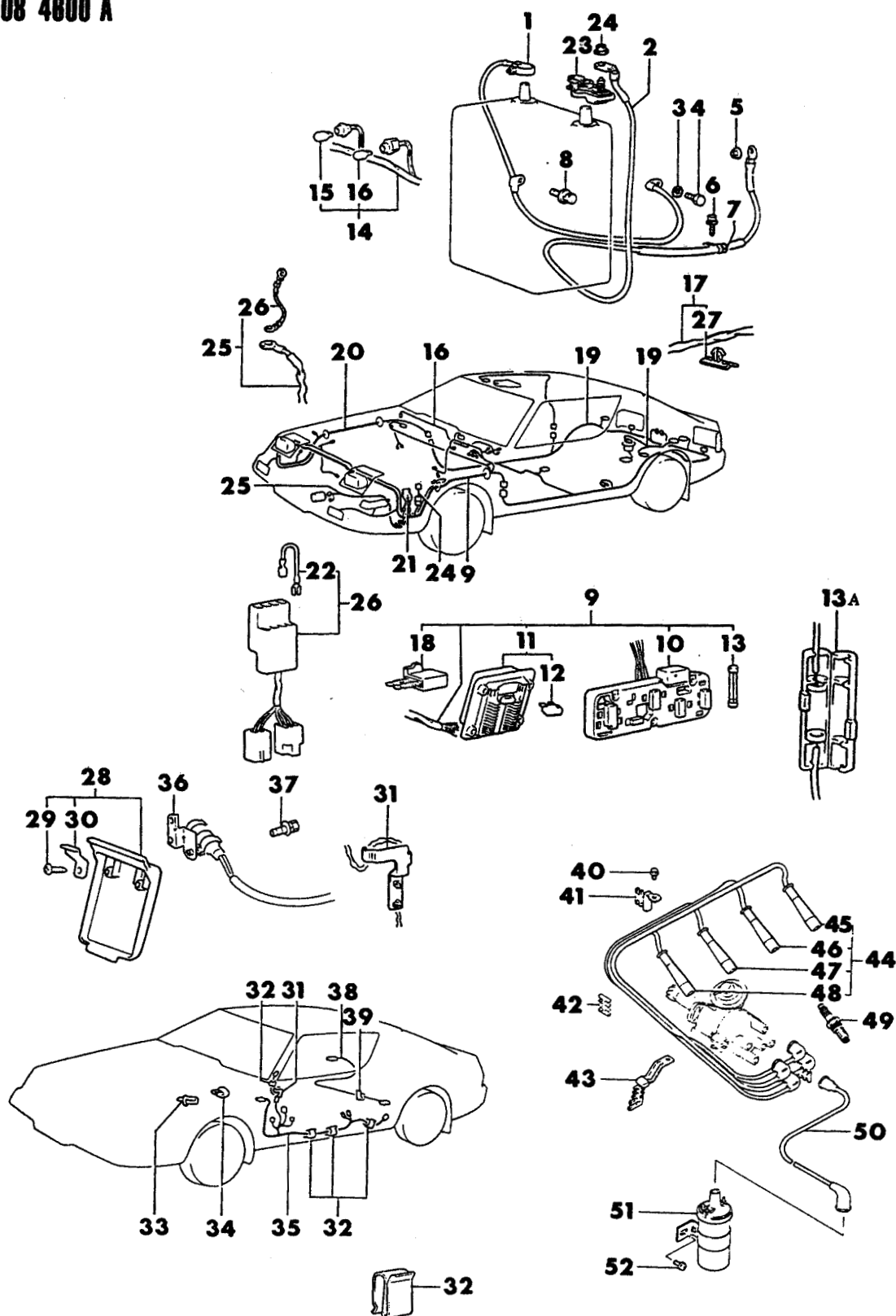
- = Non Illustrated Part

Printed in U.S.A.

FEBRUARY, 1989

WIRING HARNESS
 24 RWD CONQUEST

7708 4800 A



1987-88 IMPORT PARTS CATALOG

Figure 8-4600
Illus. Page 8-115

ELECTRICAL

ITEM	PART NUMBER	QTY	BODY	MODEL	DESCRIPTION
WIRING HARNESS					
24 RWD CONQUEST					
1	MB18 3798				CABLE, Battery, Neg.
2	MB51 0802				CABLE, Battery, Pos.
3	MF45 0965				WASHER, Tooth
4	MF10 0080				BOLT
5	MS44 0134				NUT, Flange
6	MS24 0121				BOLT, w/Washer
7	MF47 7024				CLIP
8	MB33 0946				BOLT, Ground
9	MB51 0660				HARNESS, Wiring Front, 5 Speed 1987
	MB57 1401				1988
	MB51 0661				Auto. Trans. 1987
	MB57 1400				1988
	MB51 0662				5 Speed w/Intercooler
	MB51 0663				5 Speed w/Intercooler, w/LCD
	MB51 0664				Auto. Trans. w/LCD
	MB51 0665				5 Speed w/Audio System
	MB51 0666				Auto. Trans. w/Audio System
10	MB26 1258				RELAY BOX
11	MB43 5908				FUSE BOX
12	MS81 0965				FUSE, 10A Red
	MS81 0966				15A Blue
	MS81 0967				20A Yellow
13	MS81 0912				FUSE, 5A
13A	MB16 7997				HOLDER, Fuse
14	MB51 0675				HARNESS, Glove Box 1987
	MB57 1412				1988
15	MF82 0572				BULB, Lamp
16	MS82 0083				BULB, Lamp
17	MB51 0670				HARNESS, Rear
	MB51 0671				w/Intercooler
18	MU80 4011				DIODE, 2P
19	MB50 9312				HARNESS, Fuel Gauge 1987
	MB57 1410				1988
20	MB51 0995				HARNESS, Control 1987
	MB51 0859				1988
21	MB51 0805				BOX, Fusible Link
22	MB26 2158				FUSIBLE LINK, 0.3
	MB03 7668				0.5
	MB03 7669				0.85
23	MU80 0967				TERMINAL, Battery
24	MU43 0010				NUT
25	MB51 0837				HARNESS, Alt.
26	MB51 0807				FUSIBLE LINK
27	MB18 4303				CLIP, 1987
	MS47 0402				1988, (163)
	MS47 0473				1988, (175)
28	MB71 1079				COVER, Fuse Box (Black)
	MB71 1080				(Red)
29	MF45 3015				SCREW, Tapping
30	MB52 1199				SPRING
31	MB33 8245				CLIP, Lt.

ENGINE:	Q=1500 cc	A=2000 cc	TRANS:	A=Automatic	4=4-Speed Manual
Blank=All	K=1600 cc (w/o Balance Shaft)	F=2600 cc (Car)	Blank=All	M=All Manual	5=5-Speed Manual
	W=2600 cc (Truck)				8=4 x 2 Manual

SERIES:	H=High	MODELS:	24 FWD=2-Dr Hatchback (Colt)	27 RWD-4WD=Pickup (Ram 50, Power Ram 50)
L=Low	P=Premium		24 RWD=2-Dr Hatchback (Conquest)	27 4WD=Sport Utility (Raider)
M=Medium	S=Special		41 FWD=4-Dr Sedan (Colt & Eagle Vista)	45 FWD=4-Dr Station Wagon (Colt)
				45 FWD-4WD=Station Wagon (Vista)

AR=Use as Required

#=New Part Number

- =Non Illustrated Part

Printed in U.S.A.

FEBRUARY, 1989

1987-88 IMPORT PARTS CATALOG

Figure 8-4600
Illus. Page 8-116

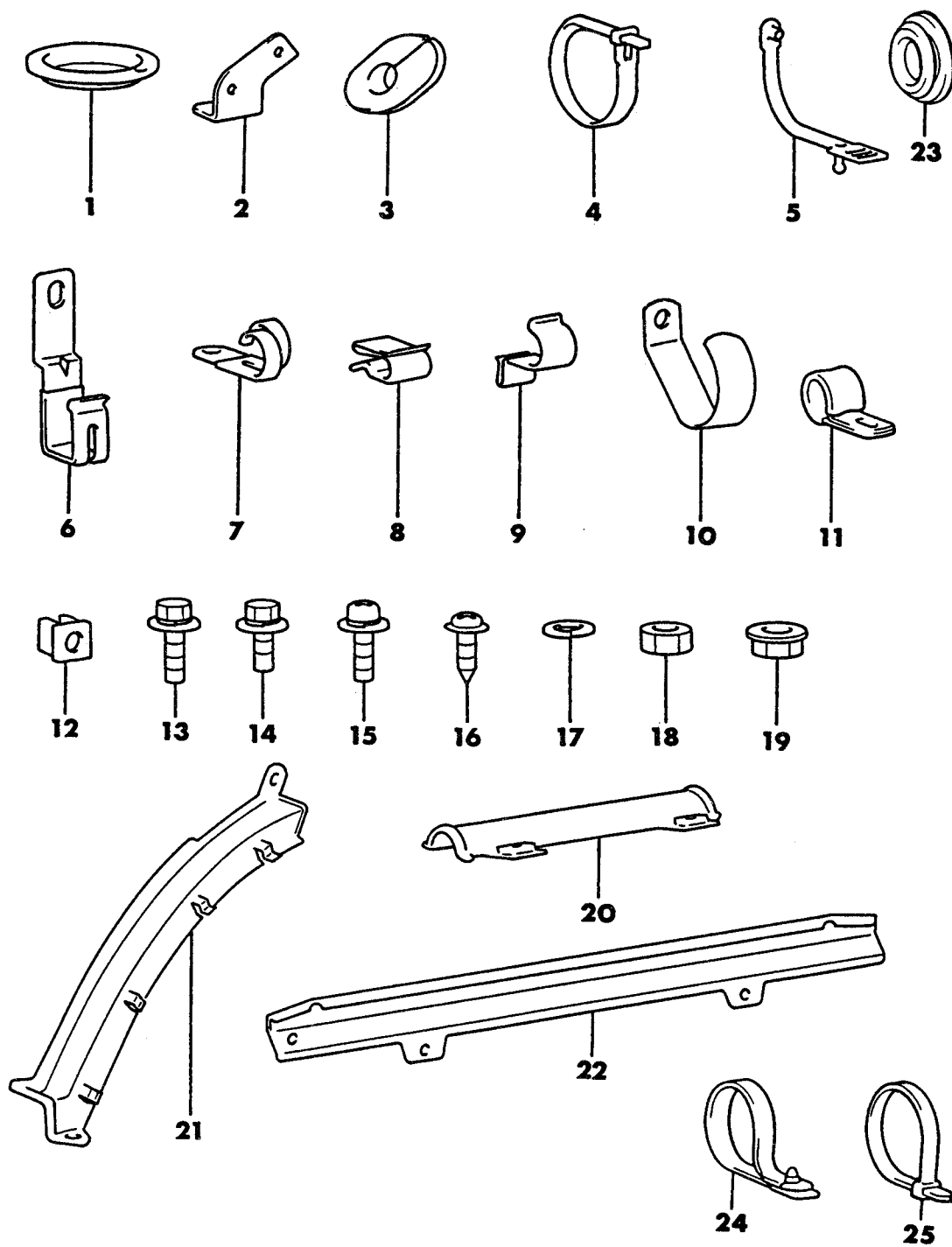
ELECTRICAL

ITEM	PART NUMBER	QTY	BODY	MODEL	DESCRIPTION
WIRING HARNESS 24 RWD CONQUEST					
	MB33 8246				Rt.
32	MB07 0440				CLIP
33					BAND, Cable, Not Serv.
34	MS47 0059				CLIP, 1987
	MS47 0361				1988
35	MB51 0677				HARNESS, Door Lt.
	MB51 0678				Rt.
36	MB28 5919				CLAMP
37	MS24 0121				BOLT, w/Washer
38	MB31 4826				HARNESS, G-Sensor
39	MS47 0402				BAND, Cable
40	MF14 0202				BOLT, Flange 1987
	MF14 0722				1988
41	MD01 1079				SUPPORT, High Tension
42	MD04 1676				CLAMP
43	MD01 1078				SUPPORT, High Tension
44	MD08 5766				CABLE SET, Spark Plug, Up to 11-30-86
	MD99 7327				Aft. 11-30-86
45	MD08 5763				CABLE, #4
46	MD08 5738				CABLE, #3
47	MD08 5736				CABLE, #2
48	MD08 5733				CABLE, #1
49	MS85 1433				SPARK PLUG, W20EP-U10
	MS85 1188				BP6ES-11
	4106 117				BPR6ES-11
	4106 117				W20EPR-U10
	MS85 1189				W22EP-11
	MS85 1239				BPR7ES-11
	MS85 1419				W22EPR-11
50	MD02 7781				CABLE, High Tension
51	MD02 5703				COIL, Ign.
52	MS35 0169				SCREW, w/Washer

ENGINE:		Q=1500 cc	A=2000 cc	TRANS:	A=Automatic	4=4-Speed Manual
Blank=All		K=1600 cc (w/o Balance Shaft)	F=2600 cc (Car)	Blank=All	M=All Manual	5=5-Speed Manual
		W=2600 cc (Truck)				8=4 x 2 Manual
SERIES:	H=High	MODELS: 24 FWD=2-Dr Hatchback (Colt)		27 RWD-4WD=Pickup (Ram 50, Power Ram 50)		
L=Low	P=Premium	24 RWD=2-Dr Hatchback (Conquest)		27 4WD=Sport Utility (Raider) 45 FWD=4-Dr Station Wagon (Colt)		
M=Medium	S=Special	41 FWD=4-Dr Sedan (Colt & Eagle Vista)		45 FWD-4WD=Station Wagon (Vista)		
AR=Use as Required		# =New Part Number	- =Non Illustrated Part		Printed in U.S.A.	FEBRUARY, 1989

ATTACHING PARTS-WIRING HARNESS
24 RWD CONQUEST

7708 4700 A



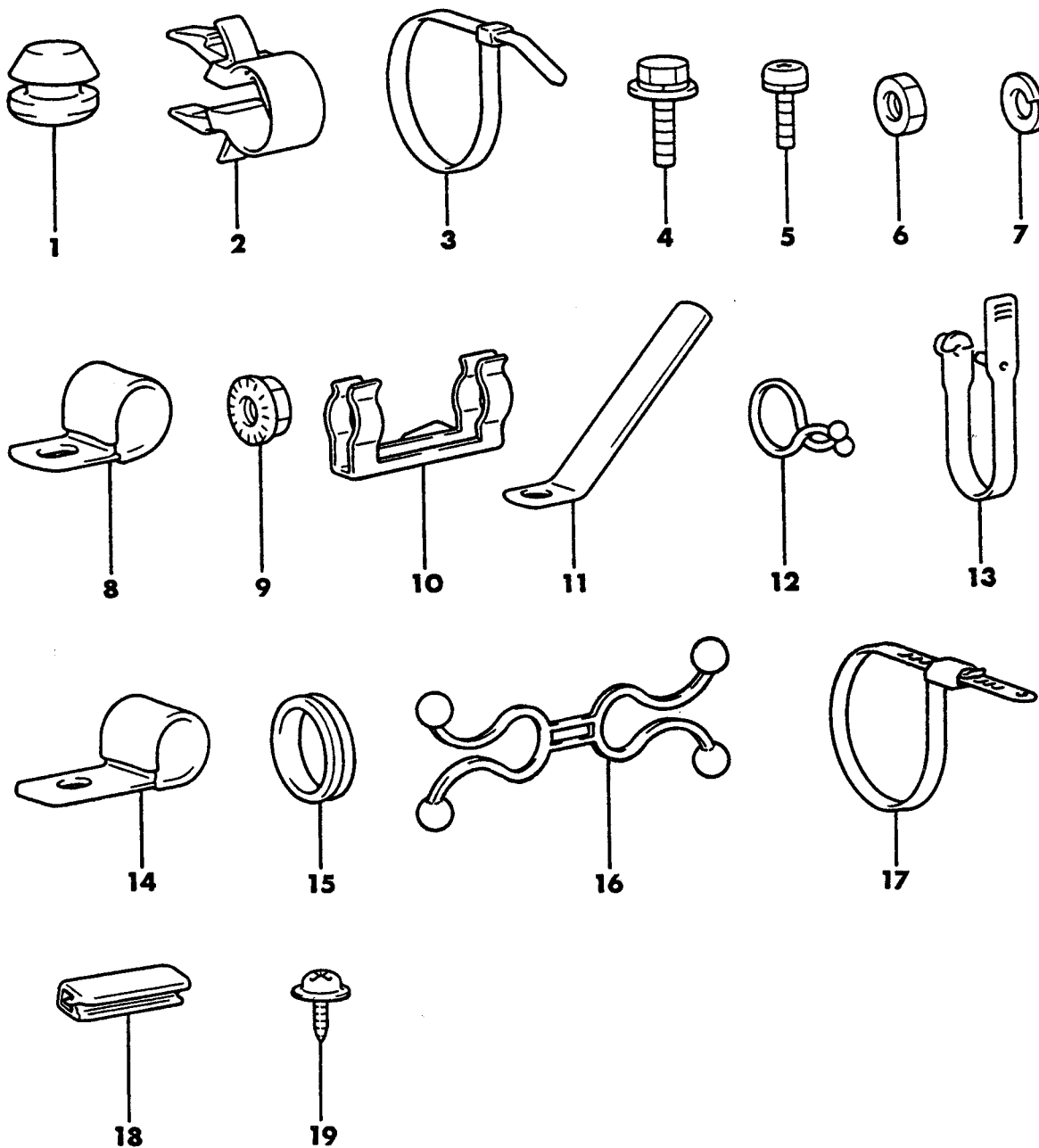
1987-88 IMPORT PARTS CATALOG

Figure 8-4700
Illus. Page 8-119

ELECTRICAL

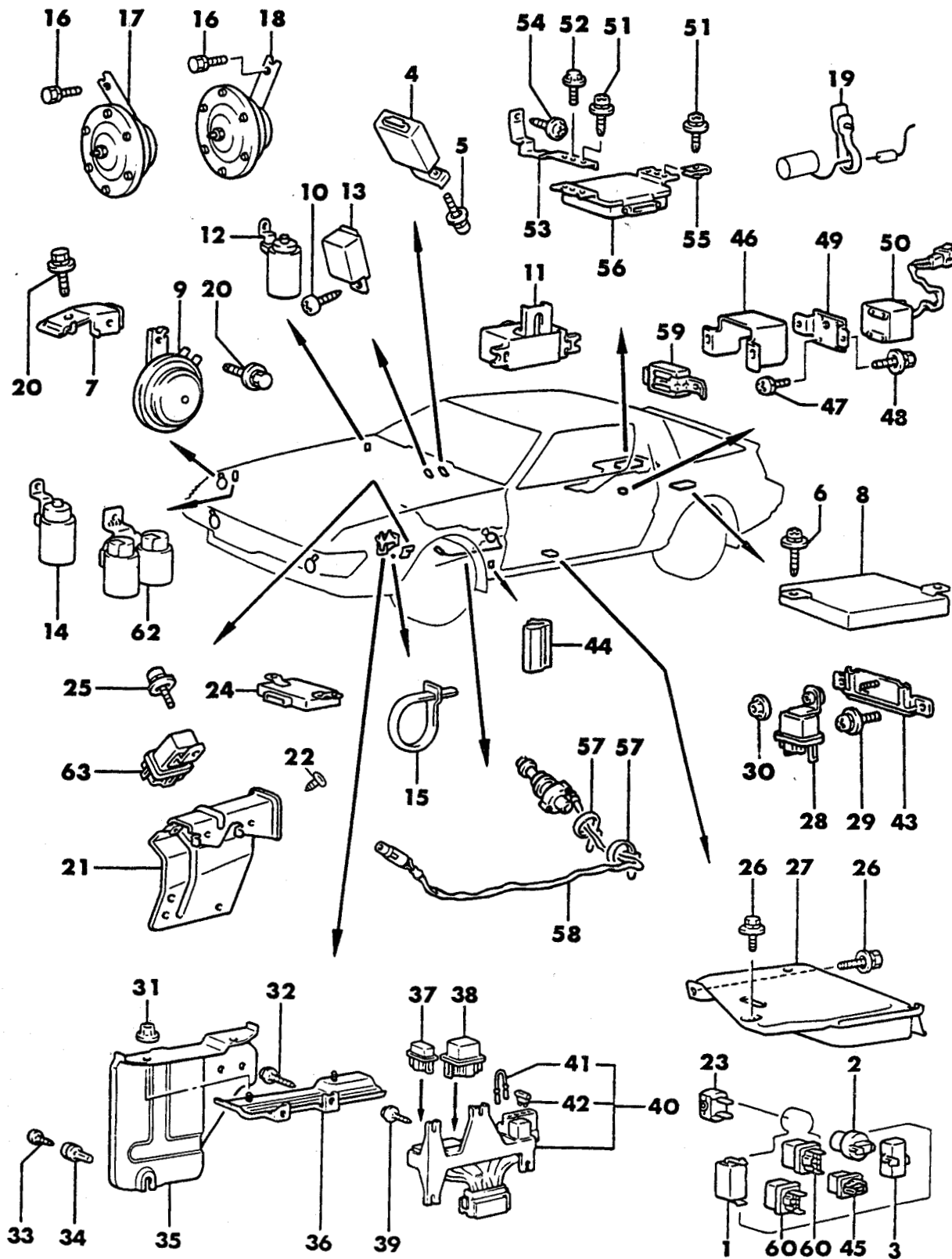
ITEM	PART NUMBER	QTY	BODY	MODEL	DESCRIPTION
ATTACHING PARTS-WIRING HARNESS					
24 RWD CONQUEST					
1	MB01 5890	1			PLUG
2	MB33 0107	1			BRACKET
3	MB26 1720	2			GROMMET
4	MS47 0401	4			BAND, Cable
5	MS47 0402	6			BAND, Cable (55)
	MS47 0403	9			(70)
	MS47 0404	2			(85)
	MS47 0406	7			(150)
6	MB18 3972	4			CLIP, 1987
	MB17 1238				1988
7	MB11 3038	1			CLIP
8	MB07 0440	1			CLIP
9	MB18 3969	1			CLIP
10	MS47 0059	4			CLIP
11	MF47 7028	1			CLIP, (20)
12	MS48 0002	1			GROMMET, Screw, (5)
13	MB24 9413	1			BOLT, Washer Ground
14	MF24 3622	5			BOLT, w/Washer
15	MS35 0125	4			SCREW, w/Washer
16	MS45 0156	10			SCREW, Tapping (5x12)
	MS45 0157				(5x16)
17	MF45 0403	2			WASHER, Spring (5)
18	MF43 0723	2			NUT, Jam
19	MS44 0501	1			NUT, Flange
20	MB18 3967	1			PROTECTOR, Harness
21	MB14 1214	1			PROTECTOR, Harness
	MB14 1213				1988, Lt.
	MB14 1214				1988, Rt.
22	MB18 3864	1			PROTECTOR, Harness
	MB38 2804	1			Blue
	MB38 2805	1			Black
23	MB57 1390				GROMMET
24	MB22 1782				BAND
25	MB30 6583				BAND

ENGINE:		Q=1500 cc	A=2000 cc	TRANS:	A=Automatic	4=4-Speed Manual
Blank=All		K=1600 cc (w/o Balance Shaft)	F=2600 cc (Car)	Blank=All	M=All Manual	5=5-Speed Manual
		W=2600 cc (Truck)				8=4 x 2 Manual
SERIES:	H=High	MODELS: 24 FWD=2-Dr Hatchback (Colt)		27 RWD-4WD=Pickup (Ram 50, Power Ram 50)		
L=Low	P=Premium	24 RWD=2-Dr Hatchback (Conquest)		27 4WD=Sport Utility (Raider)	45 FWD=4-Dr Station Wagon (Colt)	
M=Medium	S=Special	41 FWD=4-Dr Sedan (Colt & Eagle Vista)			45 FWD-4WD=Station Wagon (Vista)	
AR=Use as Required		# =New Part Number	— =Non Illustrated Part		Printed in U.S.A.	FEBRUARY, 1989

ATTACHING PARTS-WIRING HARNESS
RAIDER**7708 5300**

HORN--RELAY--FLASHER--TIMER
24 RWD CONQUEST

7708 5500 A



1987-88 IMPORT PARTS CATALOG

Figure 8-550b
Illus. Page 8-143

ELECTRICAL

ITEM	PART NUMBER	QTY	BODY	MODEL	DESCRIPTION
HORN--RELAY--FLASHER--TIMER 24 RWD CONQUEST					
1	MB50 9646	1			RELAY
2	MB08 4674				FLASHER UNIT, Hazard Warning
3	MB18 3875				FLASHER UNIT, Turn Signal
4	MB33 7914				RELAY, Passing Control
5	MS35 0165				SCREW, w/Washer
6	MS35 0125				SCREW, w/Washer
7	MB51 0815				BRACKET, Horn
8	MB51 0816				SPEED CONTROL UNIT
9	MB48 8812				HORN, (L)
10	MF45 3032				SCREW, Tapping
11	MB39 9946				ALARM, Electric
12	MB33 0024				RELAY, Radiator Fan Vacuum Pump
13	MB03 1943				BUZZER
14	MB33 0024				RELAY, Radiator Fan Vacuum Pump
15					BAND, Cable, Not Serv.
16	MS24 0085				BOLT, w/Washer
17	MB22 9715				HORN, Hi-Note
18	MB26 2166				HORN, Low Note
19	MS47 0401				BAND, Cable
20	MS24 0121				BOLT, w/Washer
21	MB54 1180				BRACKET, Relay
22	MS35 0125				SCREW, w/Washer
23	MU84 0010				CIRCUIT BREAKER
24	MB43 5513				CONTROLLER, Automatic Belt
25	MS35 0125				SCREW, w/Washer
26	MB19 0683				BOLT, w/Washer
27	MB51 0682				CONTROLLER, Time Alarm 1987
	MB57 2256				1988
28	MB18 4198				RELAY, Auto. Door Lock
29	MS35 0129				SCREW, w/Washer
30	MS44 0502				NUT, w/Washer
31	MS44 0502				NUT, w/Washer
32	MS45 0156				SCREW, Tapping
33	MS45 0162				SCREW, Tapping
34	MB26 1243				GROMMET
35	MB18 3989				COVER
36	MB18 3987				BRACKET, Cover
37	MB18 3865				RELAY, Power (4P) (Headlamp, Pwr. Window, Defogger)
38	MB18 3866				RELAY, Power (6P) (Pop-Up Lt. & Rt., Wiper, Wiper -On)
39	MS45 0157				SCREW, Tapping
40	MB51 0681				BOX, Relay
41	MB03 7668				FUSIBLE LINK, (0.5)
42	MS81 0963				FUSE, 5A, Brown
	MS81 0967				20A, Yellow
43	MB51 0825				BRACKET, Relay
44	MB17 1930				MOUNT, Rubber
45	MB14 1967				RELAY, Power Anti-Skid Brake Control
46	MB31 6178				PROTECTOR, G-SENSOR
47	MF35 0023				SCREW, w/Washer
48	MB13 3272				BOLT, w/Washer
49	MB19 3449				BRACKET, G-Sensor

ENGINE:	Q=1500 cc	A=2000 cc	TRANS:	A=Automatic	4=4-Speed Manual
Blank=All	K=1600 cc (w/o Balance Shaft)	F=2600 cc (Car)	Blank=All	M=All Manual	5=5-Speed Manual
	W=2600 cc (Truck)				8=4 x 2 Manual

SERIES:	H=High	MODELS:	24 FWD=2-Dr Hatchback (Colt)	27 RWD-4WD=Pickup (Ram 50, Power Ram 50)
L=Low	P=Premium		24 RWD=2-Dr Hatchback (Conquest)	27 4WD=Sport Utility (Raider)
M=Medium	S=Special		41 FWD=4-Dr Sedan (Colt & Eagle Vista)	45 FWD=4-Dr Station Wagon (Colt)
				45 FWD-4WD=Station Wagon (Vista)

AR=Use as Required

=New Part Number

-- =Non Illustrated Part

Printed in U.S.A.

FEBRUARY, 1989

1987-88 IMPORT PARTS CATALOG

Figure 8-5500
Illus. Page 8-144

ELECTRICAL

ITEM	PART NUMBER	QTY	BODY	MODEL	DESCRIPTION
HORN--RELAY--FLASHER--TIMER 24 RWD CONQUEST					
50	MB31 6177				G-SENSOR
51	MS35 0125				SCREW, w/Washer
52	MS20 0306				SCREW, Flange
53	MB26 1263				PLATE, Ground
54	MS45 0156				SCREW, Tapping
55	MS44 0181				NUT, Spring
56	MB31 4922				CONTROL UNIT
57					BAND, Cable, Not Serv.
58	MB19 3088				GENERATOR, Pulse
59	MB51 0823				RELAY, Intermittent Wipe
60	MB18 3866				RELAY, Power, (6P)
62	MB43 5486				RELAY, Fog Lamp
63	MB26 1260				RELAY, Horn

ENGINE:		Q=1500 cc	A=2000 cc	TRANS:		A=Automatic	4=4-Speed Manual
Blank=All		K=1600 cc (w/o Balance Shaft)	F=2600 cc (Car)	Blank=All		M=All Manual	5=5-Speed Manual
		W=2600 cc (Truck)					8=4 x 2 Manual
SERIES:		H=High	MODELS:		24 FWD=2-Dr Hatchback (Colt)	27 RWD-4WD=Pickup (Ram 50, Power Ram 50)	
L=Low		P=Premium			24 RWD=2-Dr Hatchback (Conquest)	27 4WD=Sport Utility (Raider)	45 FWD=4-Dr Station Wagon (Colt)
M=Medium		S=Special			41 FWD=4-Dr Sedan (Colt & Eagle Vista)		45 FWD-4WD=Station Wagon (Vista)
AR=Use as Required		# =New Part Number	— =Non Illustrated Part		Printed in U.S.A.		FEBRUARY, 1989