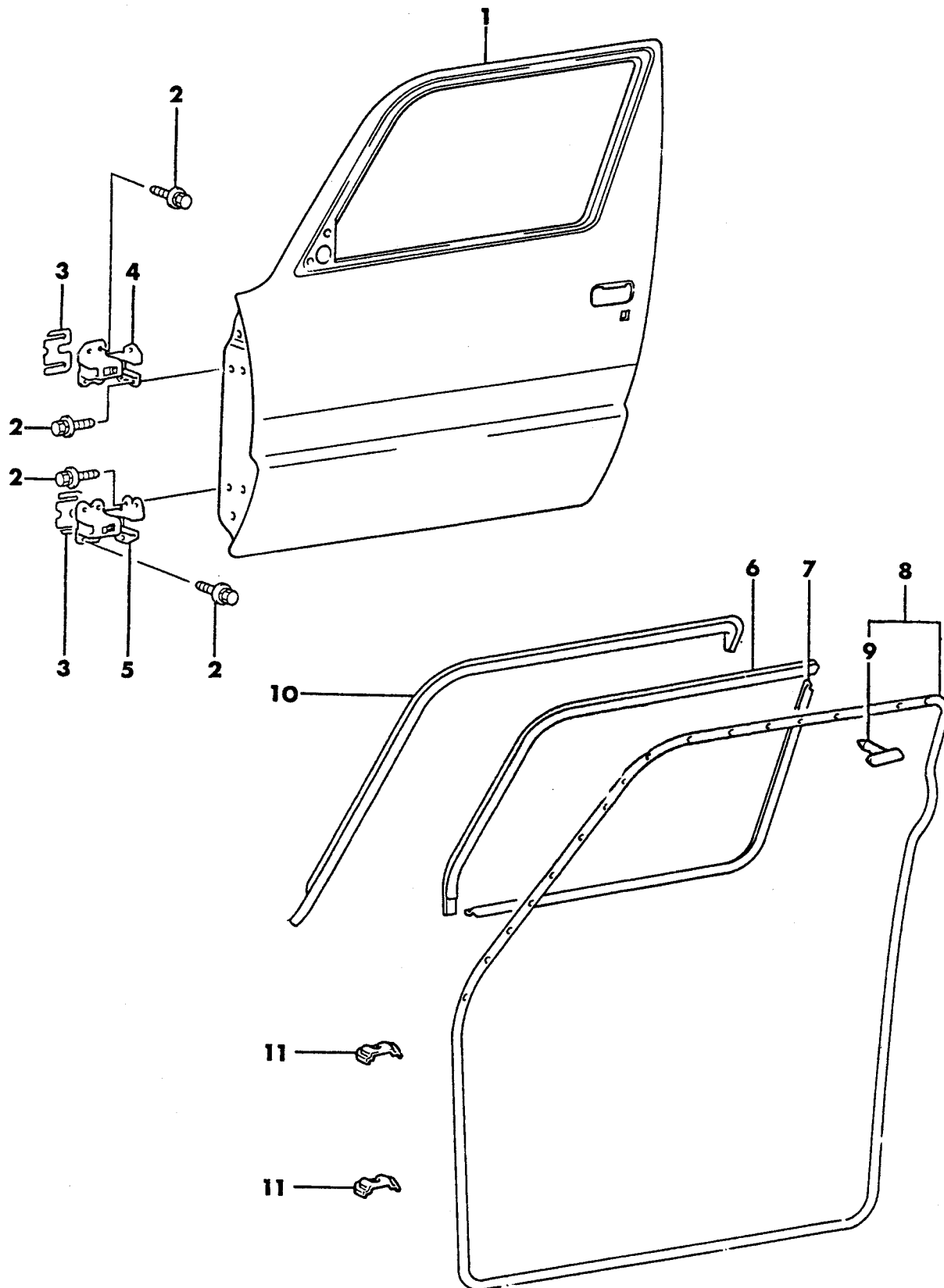


7771 900

DOOR, FRONT
SHELL, HINGES AND WEATHERSTRIPS
24 RWD - CONQUEST



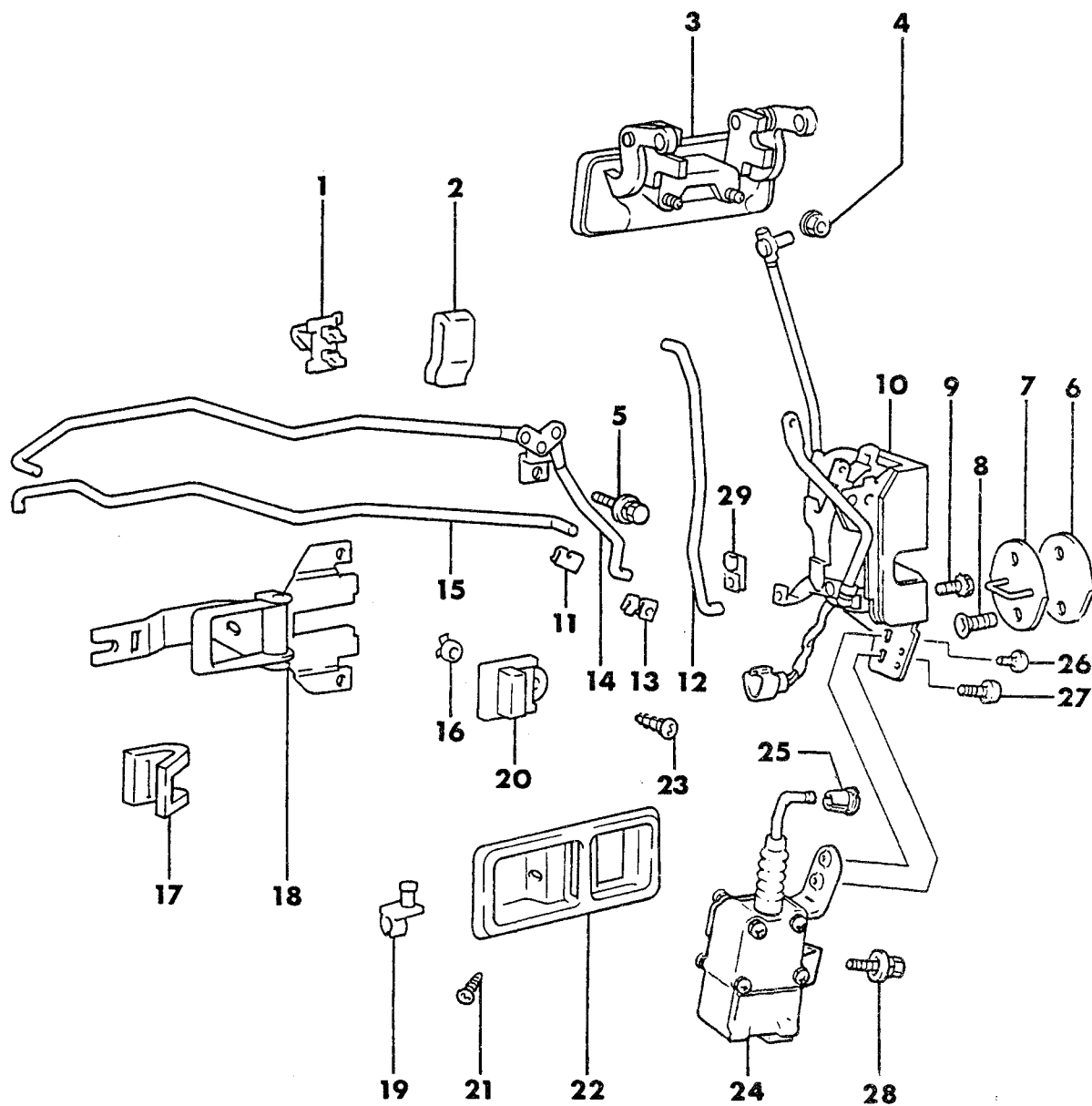
1987-88 IMPORT PARTS CATALOG

BODY - DOORS AND
RELATED PARTS

Figure 23C-900
Illus. Page 23C-29

ITEM	PART NUMBER	QTY	BODY	MODEL	DESCRIPTION
DOOR, FRONT					
SHELL, HINGES AND WEATHERSTRIPS					
24 RWD - CONQUEST					
1					PANEL, Door
	MB40 8803	1			Left
	MB40 8804	1			Right
2	MB14 2761	26			BOLT
3	MB25 8130	AR			SHIM
4					HINGE, Door, Upper
	MB25 7889	1			Left
	MB50 6259	1			w/Intercooler
	MB25 7890	1			Right
	MB50 6260	1			Right, w/Intercooler
5					HINGE, Door, Lower Left
	MB25 7873	1			Left
	MB50 6257	1			Left, w/Intercooler
	MB25 7874	1			Right
	MB50 6258	1			Right, w/Intercooler
6					WEATHERSTRIP, Door Sash Inner
	MB42 1821	1			Left
	MB42 1822	1			Right
7					WEATHERSTRIP, Door Belt Inner
	MB42 1877	1			Left
	MB42 1878	1			Right
8					WEATHERSTRIP, Door Opening
	MB17 7399	1			Left
	MB17 7400	1			Right
9	MB10 5489	96			CLIP
10					WEATHERSTRIP, Door Drip
	MB17 7391	1			Left
	MB17 7392	1			Right
11	MB32 0800	4			COVER, Door Hinge

ENGINE:	Q=1500 cc	A=2000 cc	TRANS:	A=Automatic	4=4-Speed Manual
Blank=All	K=1600 cc (w/o Balance Shaft)	F=2600 cc (Car)	Blank=All	M=All Manual	5=5-Speed Manual
	W=2600 cc (Truck)				8=4 x 2 Manual
SERIES:	H=High	MODELS:	24 FWD=2-Dr Hatchback (Colt)		
L=Low	P=Premium		27 RWD-4WD=Pickup (Ram 50, Power Ram 50)		
M=Medium	S=Special		24 FWD=2-Dr Hatchback (Conquest)		
			27 4WD=Sport Utility (Raider)		
			41 FWD=4-Dr Sedan (Colt & Eagle Vista)		
			45 FWD=4-Dr Station Wagon (Colt)		
			45 FWD-4WD=Station Wagon (Vista)		
AR=Use as Required		# =New Part Number	- =Non Illustrated Part		Printed in U.S.A.
FEBRUARY, 1989					

7771 1000DOOR, FRONT
HANDLES, LOCKS AND CONTROLS
24 RWD - CONQUEST

1987-88 IMPORT PARTS CATALOG

BODY - DOORS AND
RELATED PARTS

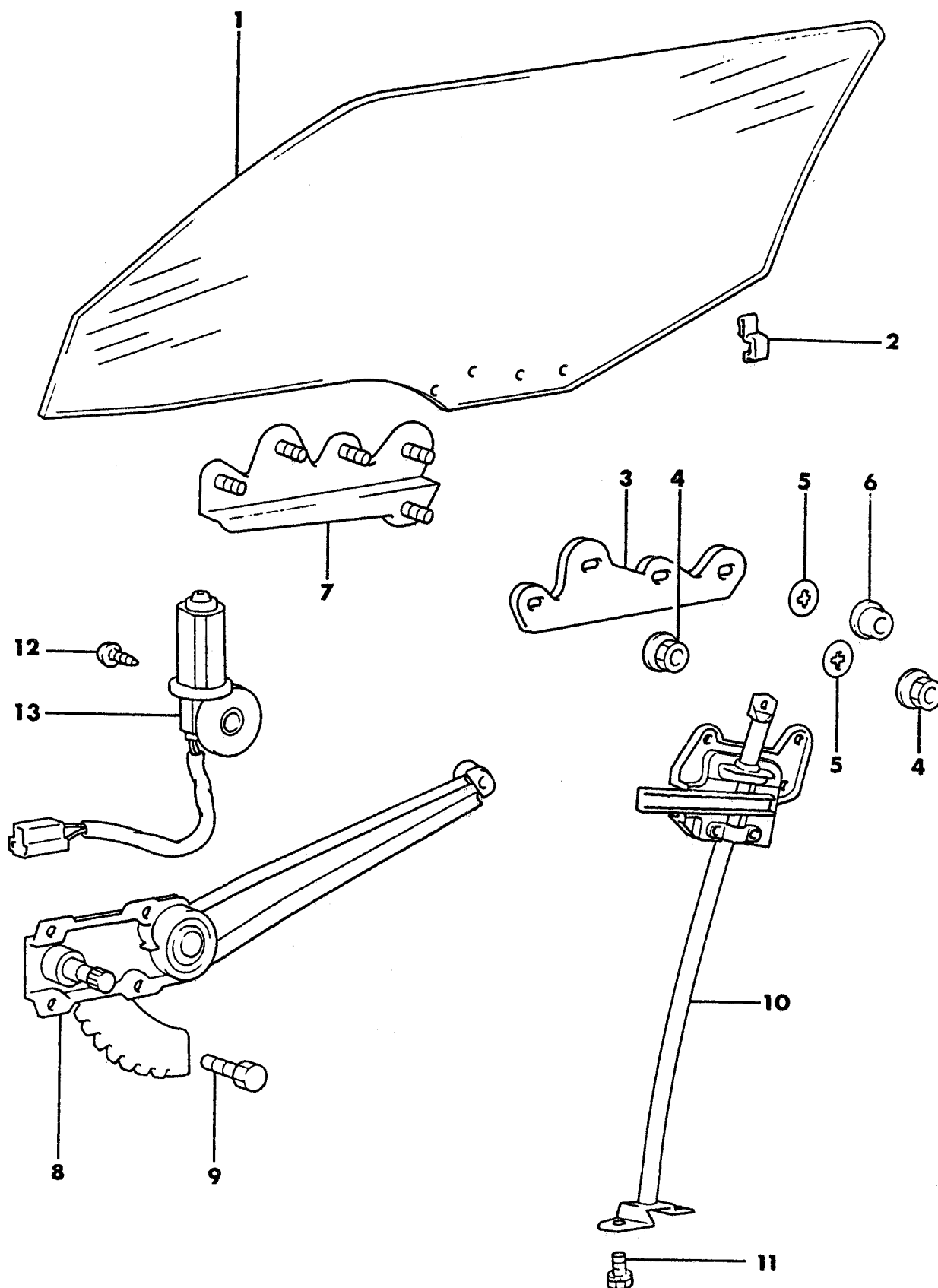
Figure 23C-1000
Illus. Page 23C-31

ITEM	PART NUMBER	QTY	BODY	MODEL	DESCRIPTION
DOOR, FRONT					
HANDLES, LOCKS AND CONTROLS					
24 RWD - CONQUEST					
1	MB10 5260	2			HOLDER, Rod
2	MB13 4382	2			CUSHION, Door Inside Handle Rod
3					HANDLE, Door Exterior
	MB25 7163	1			Left
	MB25 7164	1			Right
4	MS44 0502	4			NUT
5	MS24 0452	4			BOLT
6	MB36 5679	AR			SHIM, Latch Striker
7	MB36 5671	2			STRIKER, Door Latch
8	MB36 5635	4			SCREW
9	MB36 5637	8			SCREW
10					LATCH, Door
	MB42 2527	1			Left
	MB42 2528	1			Right
11	MS47 0432	1			CLIP, Rod, Black
	MS47 0431	1			White
12	MB42 2731	1			ROD, Door Exterior Lock, Left
	MB42 2732	1			Right
13	MS47 0432	1			CLIP, Rod, Black
	MS47 0431	1			White
14					ROD, Door Inside Lock
	MB32 1351	1			Left
	MB32 1352	1			Right
15	MB17 7341	1			ROD, Door Inside Handle, Left
	MB17 7342	1			Right
16	MB22 3246	6			GROMMET, Screw
17	MB14 2581	2			CUSHION
18	MB17 7703	2			HANDLE, Front Door Inside
19	MB14 2986	4			SNAP, Rod
20	MB14 2829	1			KNOB, Inside Lock, Left
	MB14 2830	1			Right
21	MF45 7293	2			SCREW
22					COVER, Door Inside Handle
	MB17 7180	2			Black
	MB20 4487	2			Red
23	MF45 3046	6			SCREW
24					ACTUATOR, Door Lock
	MB32 1307	1			Left
	MB54 7007	1			Left, 1988
	MB32 1308	1			Right
	MB54 7008	1			Right, 1988
25	MB42 1330	2			SNAP, Rod
	MB06 9996	2			1988
26	MS20 0030	2			SCREW
27	MB25 8979	2			BOLT
28	MB36 5642	2			BOLT
29					CLIP, Rod
	MS47 0434	1			Black
	MS47 0433	1			White

ENGINE:		Q=1500 cc	A=2000 cc	TRANS:	A=Automatic	4=4-Speed Manual
Blank=All		K=1600 cc (w/o Balance Shaft)	F=2600 cc (Car)	Blank=All	M=All Manual	5=5-Speed Manual
		W=2600 cc (Truck)				8=4 x 2 Manual
SERIES:		H=High	MODELS:			
L=Low		P=Premium	24 FWD=2-Dr Hatchback (Colt)	27 RWD-4WD=Pickup (Ram 50, Power Ram 50)		
M=Medium		S=Special	24 FWD=2-Dr Hatchback (Conquest)	27 4WD=Sport Utility (Raider)	45 FWD=4-Dr Station Wagon (Colt)	
			41 FWD=4-Dr Sedan (Colt & Eagle Vista)		45 FWD-4WD=Station Wagon (Vista)	
AR=Use as Required		# =New Part Number	-- =Non Illustrated Part		Printed in U.S.A.	FEBRUARY, 1989

7771 1100

DOOR, FRONT
GLASS AND REGULATOR
24 RWD - CONQUEST



1987-88 IMPORT PARTS CATALOG

BODY - DOORS AND
RELATED PARTS

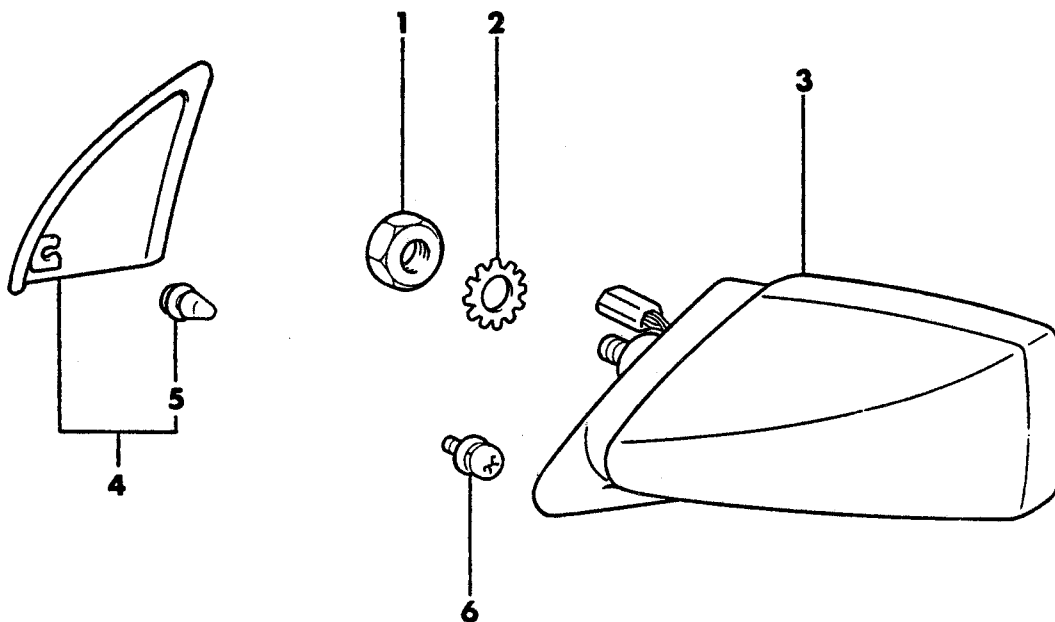
Figure 23C-1100
Illus. Page 23C-33

ITEM	PART NUMBER	QTY	BODY	MODEL	DESCRIPTION
DOOR, FRONT GLASS AND REGULATOR 24 RWD - CONQUEST					
1					GLASS, Door
	MB17 7385	1			Tinted, Left
	MB17 7386	1			Tinted, Right
2	MB36 5889	4			STABILIZER, Door Glass
3	MB17 7381	2			INSERT, Front Door Glass
4	MS44 0522	6			NUT
5					SPACER
	MB25 7971	AR			T=0.5
	MB25 7972	AR			T=1.0
6	MS44 0522	4			NUT
7					HOLDER, Door Glass Outer
	MB17 7369	1			Left
	MB17 7370	1			Right
8					REGULATOR, Door Glass
	MB17 7359	1			Left
	MB17 7360	1			Right
9	MB03 6396	8			BOLT
10					GUIDE, Door Glass
	MB17 7357	1			Left
	MB17 7358	1			Right
11	MS24 0341	6			BOLT
12	MF45 6831	6			SCREW
13					MOTOR, Power Window
	MB17 1249	1			Left
	MB17 1250	1			Right

ENGINE:	Q=1500 cc	A=2000 cc	TRANS:	A=Automatic	4=4-Speed Manual
Blank=All	K=1600 cc (w/o Balance Shaft)	F=2600 cc (Car)	Blank=All	M=All Manual	5=5-Speed Manual
	W=2600 cc (Truck)				8=4 x 2 Manual
SERIES:	H=High	MODELS:	24 FWD=2-Dr Hatchback (Colt)	27 RWD-4WD=Pickup (Ram 50, Power Ram 50)	
L=Low	P=Premium		24 RWD=2-Dr Hatchback (Conquest)	27 4WD=Sport Utility (Raider)	45 FWD=4-Dr Station Wagon (Colt)
M=Medium	S=Special		41 FWD=4-Dr Sedan (Colt & Eagle Vista)		45 FWD-4WD=Station Wagon (Vista)
AR=Use as Required	# =New Part Number	- =Non Illustrated Part	Printed in U.S.A.	FEBRUARY, 1989	

7771 1200

MIRRORS, EXTERIOR
24 RWD - CONQUEST



1987-88 IMPORT PARTS CATALOG

BODY - DOORS AND
RELATED PARTS

Figure 23C-1200
Illus. Page 23C-35

ITEM	PART NUMBER	QTY	BODY	MODEL	DESCRIPTION
MIRRORS, EXTERIOR					
24 RWD - CONQUEST					
1	MF43 0728	2			NUT
2	MF45 0808	2			WASHER
3					MIRROR, Electric
					LEFT
	MB47 8619	1			Black
	MB47 8621	1			Red
	MB47 8622	1			Beige
	MB47 8623	1			White
	MB47 8717	1			Gold
	MB70 8306	1			Blue
	MB70 8307	1			Silver
	MB47 8624	1			Black, 1988
	MB71 7624	1			Yellow, 1988
	MB71 7625	1			White, 1988
	MB71 7627	1			Blue, 1988
	MB71 7626	1			Silver, 1988
	MB71 7628	1			Maroon, 1988
					RIGHT
	MB47 8625	1			Black
	MB47 8627	1			Red
	MB47 8628	1			Beige
	MB47 8629	1			White
	MB47 8718	1			Gold
	MB71 1926	1			Blue
	MB71 1927	1			Silver
	MB47 8630	1			Black, 1988
	MB71 7630	1			White, 1988
	MB71 7629	1			Yellow, 1988
	MB71 7632	1			Blue, 1988
	MB71 7631	1			Silver, 1988
	MB71 7633	1			Maroon, 1988
4					COVER, Mirror Inside
	MB18 9391	1			Left
	MB18 9392	1			Right
5	MB22 3933	2			RETAINER, Mirror Inside Cover
6	MS24 0391	2			SCREW

ENGINE:		Q=1500 cc	A=2000 cc	TRANS:	A=Automatic	4=4-Speed Manual
Blank=All		K=1600 cc (w/o Balance Shaft)	F=2600 cc (Car)	Blank=All	M=All Manual	5=5-Speed Manual
		W=2600 cc (Truck)				8=4 x 2 Manual
SERIES:		H=High	MODELS: 24 FWD=2-Dr Hatchback (Colt)			
L=Low		P=Premium	27 RWD-4WD=Pickup (Ram 50, Power Ram 50)			
M=Medium		S=Special	24 RWD=2-Dr Hatchback (Conquest)			
			27 4WD=Sport Utility (Raider)			
			41 FWD=4-Dr Sedan (Colt & Eagle Vista)			
			45 FWD=4-Dr Station Wagon (Colt)			
			45 FWD-4WD=Station Wagon (Vista)			
AR=Use as Required		# =New Part Number	- =Non Illustrated Part		Printed in U.S.A.	
					FEBRUARY, 1989	