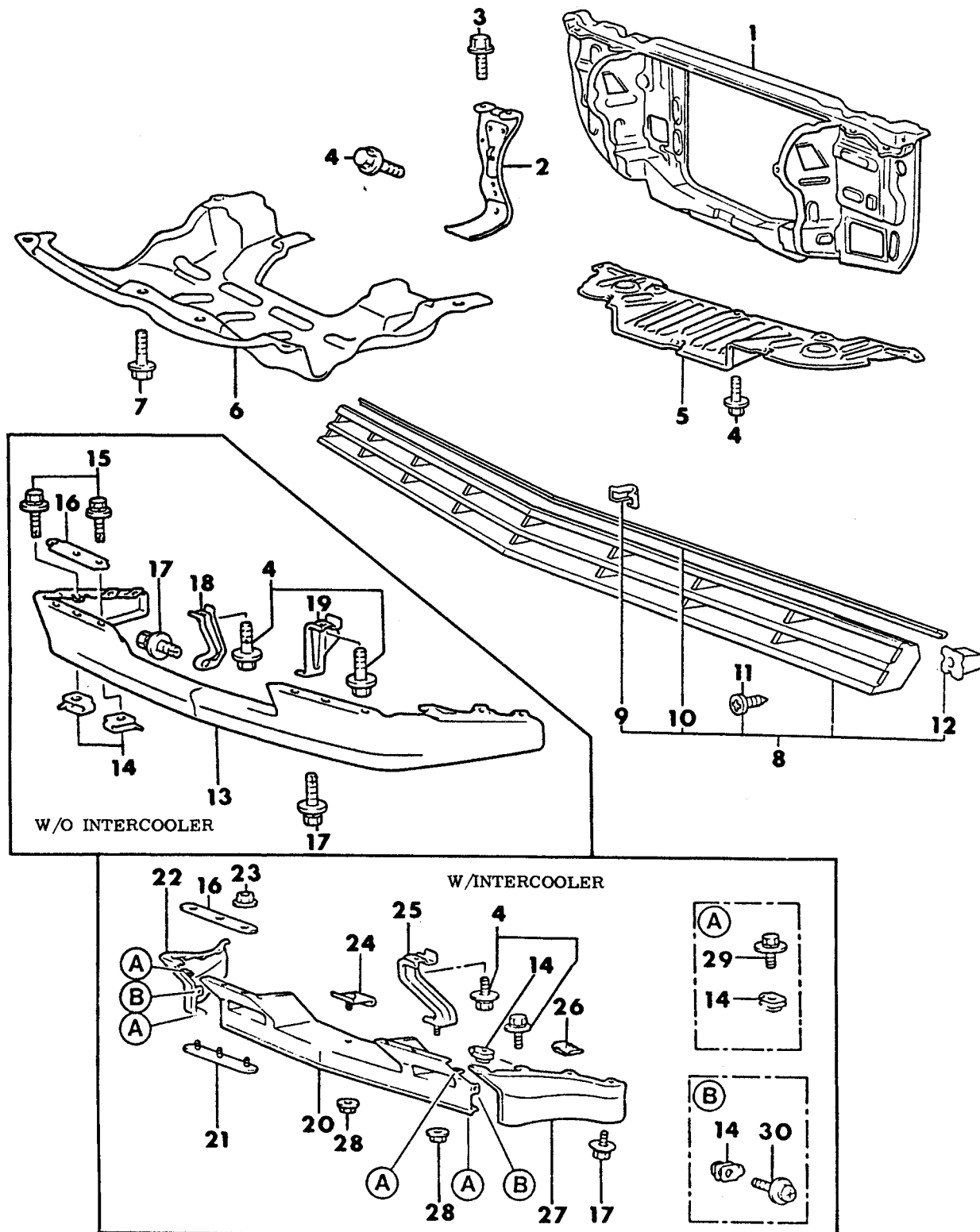


**7707 200**GRILLE AND RELATED PARTS  
24 RWD - CONQUEST - 1987

# 1987-88 IMPORT PARTS CATALOG

Figure 7-200  
Illus. Page 7-7

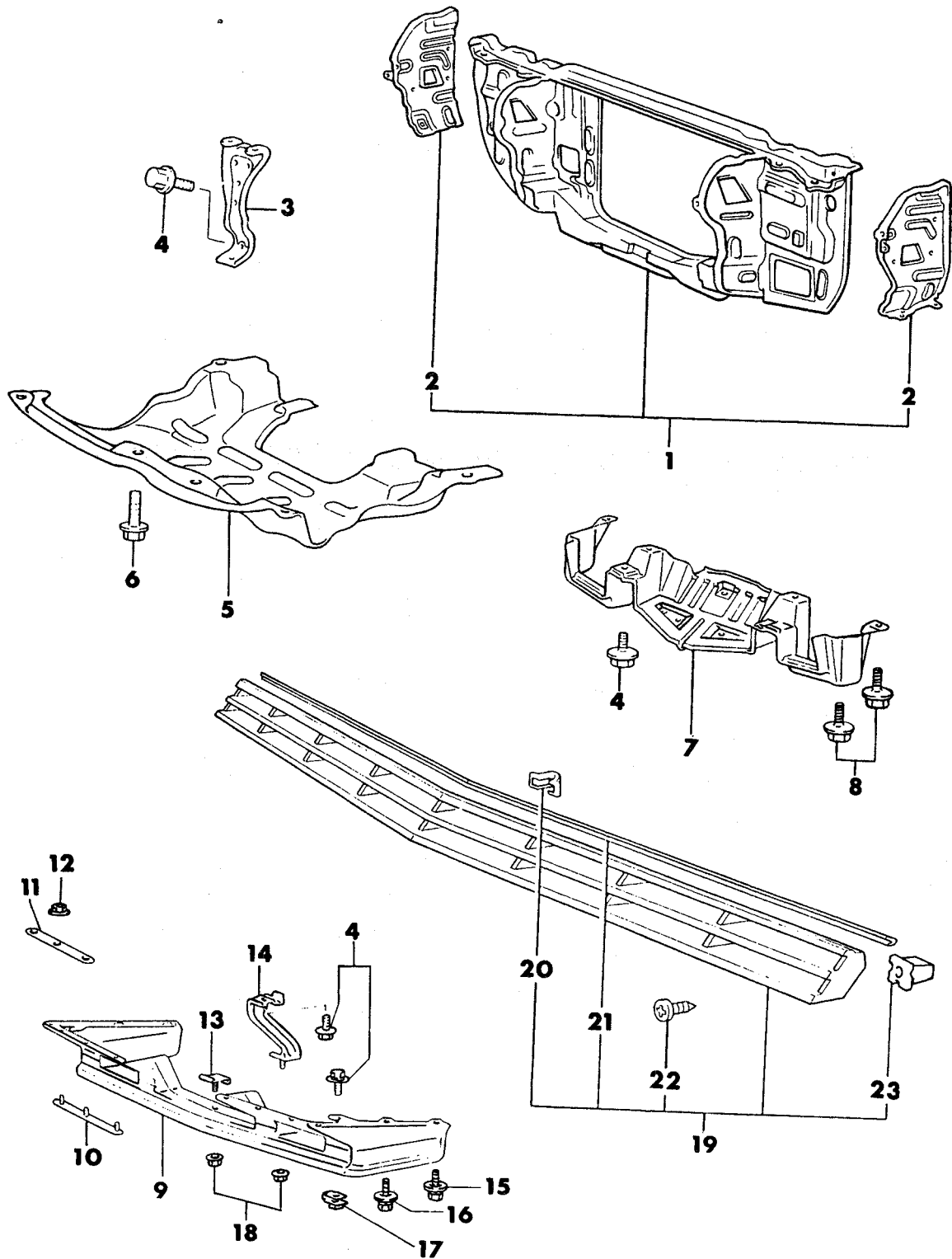
## COOLING

ITEM	PART NUMBER	QTY	BODY	MODEL	DESCRIPTION
------	-------------	-----	------	-------	-------------

### GRILLE AND RELATED PARTS 24 RWD - CONQUEST - 1987

1	MB50 6210	1			SUPPORT, Headlamp
2					SUPPORT, Hood Lock
	MB29 6209	1			w/o Intercooler
	MB29 6821	1			w/Intercooler 5 Speed
3	MS10 0242	2			BOLT, Flange (6x14)
4	MS10 0222	AR			BOLT, Flange (6x14)
5					PANEL, Air Guide
	MB29 6194	1			w/o Intercooler
	MB40 6254	1			w/Intercooler
6	MB19 5371	1			COVER, Under
7	MF14 0021	4			BOLT, Flange (8x12)
8	MB37 7226	1			GRILLE PACKAGE, Radiator - White (Dealer Paint)
9	MB15 3819	5			CLIP, Front Deck Garnish
10	MB17 4225	1			PROTECTOR, Grille
11					SCREW, Tapping
	MS45 0286	2			(4x20) up to Nov. 1986
	MU24 0043	2			after Dec. 1986
12	MB08 3120	2			GROMMET, Screw
13	#MB29 6232	1			AIR DAM - White (Dealer Paint)
14	MB40 6404	AR			NUT, Plate
15	MF24 7206	8			BOLT and WASHER (5x20)
16	MB36 9370	2			PLATE, Air Dam - Upper
17	MB23 3737	AR			BOLT and WASHER
18	MB40 6964	1			BRACKET, Air Dam - Center
19					BRACKET, Air Dam - Side
	MB29 6197	1			Lt.
	MB29 6198	1			Rt.
20	MB49 4882	1			AIR DAM, Center - White/Black (Dealer Paint)
21					PLATE, Air Dam - Lower
	MB36 9694	1			Lt.
	MB36 9695	1			Rt.
22	MB49 4892	1			AIR DAM, Side - Rt. - White/Black (Dealer Paint)
23	MS44 0501	6			NUT and WASHER (5)
24	MB48 0110	1			BRACKET, Air Dam - Center
25					BRACKET, Air Dam - Side
	MB36 9692	1			Lt.
	MB36 9693	1			Rt.
26	MS44 0191	2			NUT, Spring
27	MB49 4887	1			AIR DAM, Side - Lt. - White/Black (Dealer Paint)
28	MS44 0502	2			NUT and WASHER (6)
29	MF24 7204	4			BOLT and WASHER (5x16)
30	MS35 0144	2			SCREW and WASHER (5x20)

<b>ENGINE:</b>		Q=1500 cc	A=2000 cc	<b>TRANS:</b>	A=Automatic	4=4-Speed Manual
Blank=All		K=1600 cc (w/o Balance Shaft)	F=2600 cc (Car)	Blank=All	M=All Manual	5=5-Speed Manual
		W=2600 cc (Truck)				8=4 x 2 Manual
<b>SERIES:</b>		H=High	<b>MODELS:</b>		24 FWD=2-Dr Hatchback (Colt)	27 RWD-4WD=Pickup (Ram 50, Power Ram 50)
L=Low		P=Premium			24 RWD=2-Dr Hatchback (Conquest)	27 4WD=Sport Utility (Raider)
M=Medium		S=Special			41 FWD=4-Dr Sedan (Colt & Eagle Vista)	45 FWD=4-Dr Station Wagon (Colt)
						45 FWD-4WD=Station Wagon (Vista)
AR=Use as Required		#=New Part Number	- =Non Illustrated Part		Printed in U.S.A.	FEBRUARY, 1989

**7707 225**GRILLE AND RELATED PARTS  
24 RWD - CONQUEST - 1988

# 1987-88 IMPORT PARTS CATALOG

Figure 7-225  
Illus. Page 7-9

## COOLING

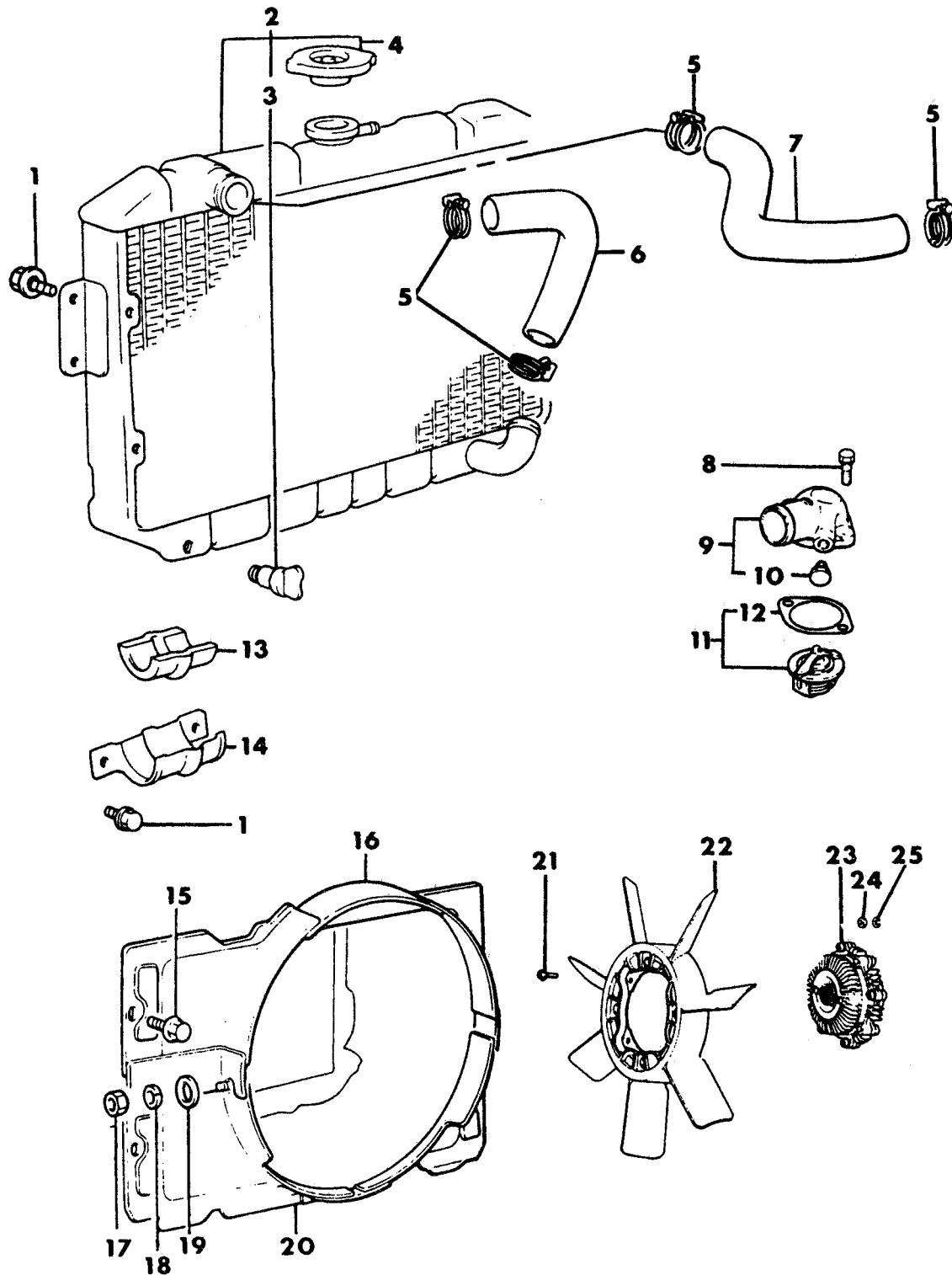
ITEM	PART NUMBER	QTY	BODY	MODEL	DESCRIPTION
------	-------------	-----	------	-------	-------------

### GRILLE AND RELATED PARTS 24 RWD - CONQUEST - 1988

1	MB50 6210	1			SUPPORT, Headlamp
2					PLATE, Front Fender Support
	MB23 3418	1			Rt.
	MB23 3419	1			Lt.
3	MB29 6821	1			SUPPORT, Hood Latch
4	MS10 0222	8			BOLT, Flange (6x14)
5	MB19 5371	1			PANEL, Under Cover - Front
6	MF14 0021	4			BOLT, Flange (8x12)
7					PANEL, Air Guide
	MB56 0354	1			5 Speed
	MB58 6900	1			A Trans.
8	MS24 0396	2			BOLT and WASHER (8x16)
9	MB72 1407	1			PANEL, Air Dam Skirt - White (Dealer Paint)
10					PLATE, Air Dam Skirt Panel - Lower
	MB36 9695	1			Rt.
	MB36 9694	1			Lt.
11	MB36 9370	2			PLATE, Air Dam - Upper
12	MS44 0501	6			NUT and WASHER (5)
13	MB48 0110	1			BRACKET, Air Dam - Center
14					BRACKET, Air Dam - Side
	MB36 9693	1			Rt.
	MB36 9692	1			Lt.
15	MB23 3737	2			BOLT and WASHER (6x18)
16	MF24 7206	2			BOLT and WASHER (5x20)
17	MB40 6404	2			NUT (5)
18	MS44 0502	2			NUT and WASHER (6)
19	MB52 7947	1			GRILLE PACKAGE, Radiator - White (Dealer Paint)
20	MB15 3819	5			CLIP, Garnish
21	MB17 4225	1			PROTECTOR, Radiator Grille
22	MU24 0043	2			SCREW, Tapping (4x20)
23	MB08 3120	2			GROMMET

<b>ENGINE:</b>		Q=1500 cc	A=2000 cc	<b>TRANS:</b>		A=Automatic	4=4-Speed Manual
Blank=All		K=1600 cc (w/o Balance Shaft)	F=2600 cc (Car)	Blank=All		M=All Manual	5=5-Speed Manual
		W=2600 cc (Truck)					8=4 x 2 Manual
<b>SERIES:</b>		H=High	<b>MODELS:</b>		24 FWD=2-Dr Hatchback (Colt)		
L=Low		P=Premium			27 RWD=4WD=Pickup (Ram 50, Power Ram 50)		
M=Medium		S=Special			24 RWD=2-Dr Hatchback (Conquest)		
					27 4WD=Sport Utility (Raider)		
					45 FWD=4-Dr Station Wagon (Colt)		
					41 FWD=4-Dr Sedan (Colt & Eagle Vista)		
					45 FWD=4WD=Station Wagon (Vista)		
AR=Use as Required		#=New Part Number		- =Non Illustrated Part		Printed in U.S.A.	
						FEBRUARY, 1989	

7707 700

RADIATOR AND RELATED PARTS  
W/O INTERCOOLER  
24 RWD - CONQUEST

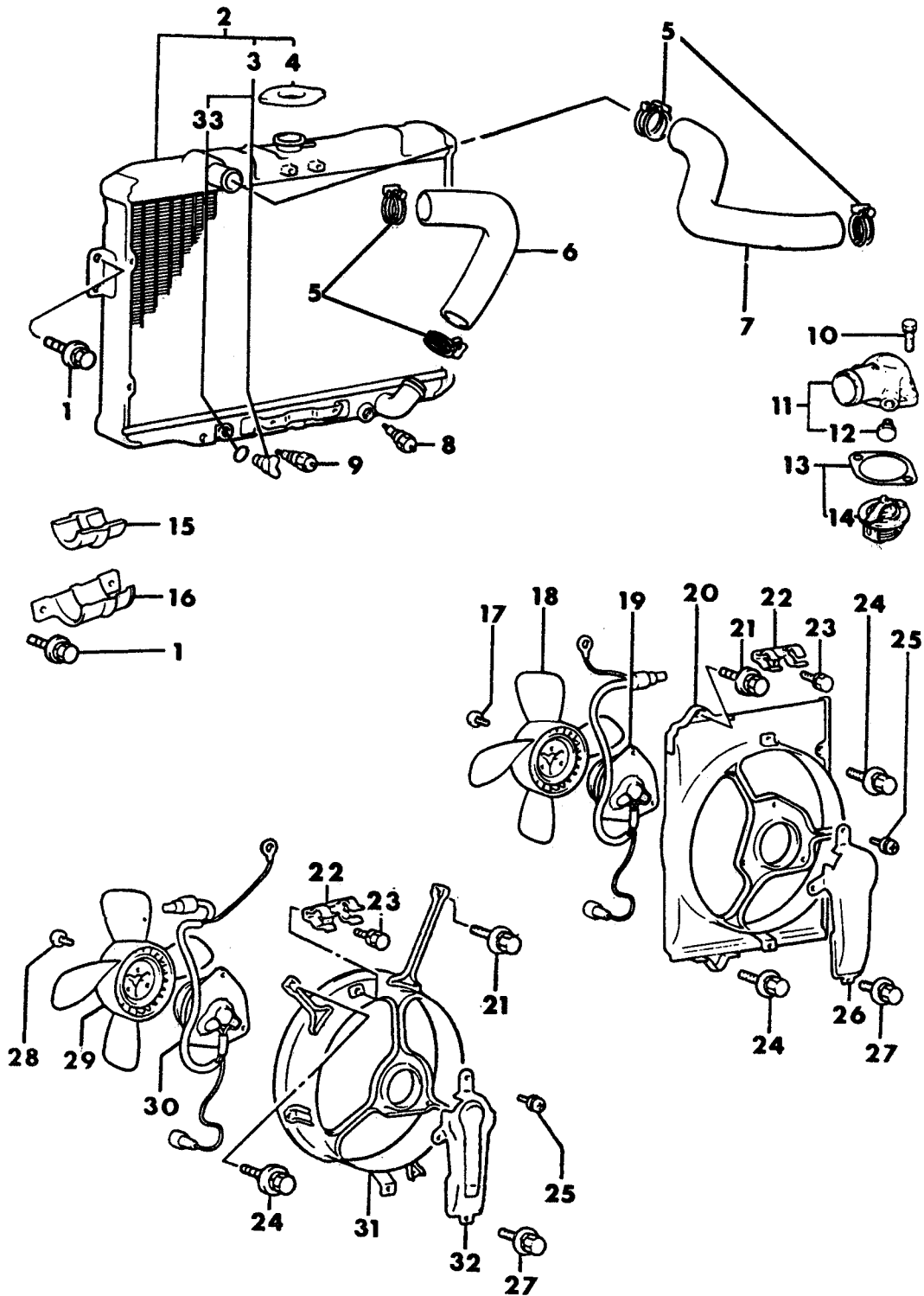
# 1987-88 IMPORT PARTS CATALOG

Figure 7-700  
Illus. Page 7-21

## COOLING

ITEM	PART NUMBER	QTY	BODY	MODEL	DESCRIPTION
RADIATOR AND RELATED PARTS W/O INTERCOOLER 24 RWD - CONQUEST					
1	MF24 3648	6			BOLT and WASHER (8x14)
2					RADIATOR ASSEMBLY
	MB22 2340	1			5 Speed
	MB35 6070	1			A Trans.
3	MB00 8067	1			PLUG ASSEMBLY, Drain
4	MB22 2066	1			CAP, Radiator
5	MA60 9112	4			CLAMP, Hose
6	MB00 7582	1			HOSE, Radiator - Lower (H0061235)
7					HOSE, Radiator - Upper
	MB00 7476	1			up to April 1987
	MB53 8862	1			after May 1987
8	MS10 1239	2			BOLT and WASHER (8x25)
9					FITTING, Water Outlet
	MD08 4802	1			up to April 1987
	MD12 7231	1			after May 1987
10	MD01 4929	1			PLUG, Taper (PT-1/8)
11	MD99 7221	1			THERMOSTAT and GASKET PACKAGE
12					GASKET
	MD08 3109	1			up to June 1986
	MD11 8040	1			after July 1986
13	MB00 8050	1			INSULATOR, Radiator Support
14	MB00 8049	1			BRACKET, Radiator
15	MS10 0232	4			BOLT, Flange (6x14)
16	MB00 8145	1			SHROUD, Upper
17	MF43 0005	2			NUT (8)
18	MF45 0405	2			WASHER, Spring (8)
19	MF45 0005	2			WASHER, Plain (8)
20	MB00 8146	1			SHROUD, Lower
21	MF14 0210	4			BOLT, Flange (6x28)
22	MD01 1149	1			FAN, Radiator Cooling
23	MD10 4576	1			CLUTCH, Fan
24	MF43 0004	4			NUT, Flange (6)
25	MF45 0404	4			WASHER, Spring (6)

<b>ENGINE:</b>		Q=1500 cc	A=2000 cc	<b>TRANS:</b>	A=Automatic	4=4-Speed Manual
Blank=All		K=1600 cc (w/o Balance Shaft)	F=2600 cc (Car)	Blank=All	M=All Manual	5=5-Speed Manual
		W=2600 cc (Truck)				8=4 x 2 Manual
<b>SERIES:</b>	H=High	<b>MODELS:</b> 24 FWD=2-Dr Hatchback (Colt)		27 RWD-4WD=Pickup (Ram 50, Power Ram 50)		
L=Low	P=Premium	24 RWD=2-Dr Hatchback (Conquest)		27 4WD=Sport Utility (Raider)		
M=Medium	S=Special	41 FWD=4-Dr Sedan (Colt & Eagle Vista)		45 FWD=4-Dr Station Wagon (Colt)		
				45 FWD-4WD=Station Wagon (Vista)		
AR=Use as Required		#=New Part Number	--=Non Illustrated Part		Printed in U.S.A.	FEBRUARY, 1989

**7707 800 A**RADIATOR AND RELATED PARTS  
W/INTERCOOLER  
24 RWD - CONQUEST

## COOLING

ITEM	PART NUMBER	QTY	BODY	MODEL	DESCRIPTION
RADIATOR AND RELATED PARTS W/INTERCOOLER 24 RWD - CONQUEST					
1	MF24 3648	6			BOLT and WASHER (8x14)
2	MB35 6194	1			RADIATOR ASSEMBLY
3	MB00 8067	1			PLUG ASSEMBLY, Drain
4	MB22 2066	1			CAP, Radiator
5	MA60 9112	4			CLAMP, Hose
6	MB35 6198	1			HOSE, Radiator - Lower
7					HOSE, Radiator - Upper
	MB00 7476	1			up to April 1987
	MB53 8862	1			after May 1987
8	MB00 7639	1			THERMOSENSOR
9	MB43 5745	1			THERMOSENSOR
10					BOLT and WASHER (8x25)
	#MS10 1239	2			1987
	MF24 1255	2			1988
11					FITTING, Water Outlet
	MD08 4802	1			up to April 1987
	MD12 7231	1			after May 1987
12	MD01 4929	1			PLUG, Taper (PT-1/8)
13	MD99 7221	1			THERMOSTAT and GASKET PACKAGE
14					GASKET
	MD08 3109	1			1987
	MD11 8040	1			1988
15	MB00 8050	1			INSULATOR, Radiator Support
16	MB00 8049	1			BRACKET, Radiator
17	MB35 6499	3			SCREW (5x6)
18	MB35 6497	1			FAN, Radiator Cooling
19	MB35 6496	1			MOTOR, Radiator Cooling Fan
20	MB35 6495	1			SHROUD, Radiator Cooling Fan
21	MB23 9844	2			BOLT and WASHER (8x16)
22	MB19 6788	2			CLAMP ASSEMBLY
23	MF24 0023	2			BOLT and WASHER (6x12)
24	MF24 3648	6			BOLT and WASHER (8x14)
25	MB35 6251	6			SCREW (5x8)
26	MB35 6498	1			DUCT, Air
27	MF24 3622	2			BOLT and WASHER (6x12)
28					SCREW
	MB35 6252	3			1987
	MB35 6252	3			5 Speed (4x6) 1988
	MB35 6499	3			A Trans. (5x6) 1988
29					FAN, Radiator Cooling
	MB35 6543	1			1987
	MB35 6543	1			5 Speed 1988
	MB53 8666	1			1988
30					MOTOR, Radiator Cooling Fan
	MB35 6542	1			1987
	MB35 6542	1			5 Speed 1988
	MB53 8757	1			A Trans. 1988
31					SHROUD, Radiator Cooling Fan
	MB35 6541	1			1987
	MB35 6541	1			5 Speed 1988
	MB53 8755	1			A Trans. 1988

<b>ENGINE:</b>	Q=1500 cc	A=2000 cc	<b>TRANS:</b>	A=Automatic	4=4-Speed Manual
Blank=All	K=1600 cc (w/o Balance Shaft)	F=2600 cc (Car)	Blank=All	M=All Manual	5=5-Speed Manual
	W=2600 cc (Truck)				8=4 x 2 Manual

<b>SERIES:</b>	H=High	<b>MODELS:</b>	24 FWD=2-Dr Hatchback (Colt)	27 RWD-4WD=Pickup (Ram 50, Power Ram 50)
L=Low	P=Premium		24 RWD=2-Dr Hatchback (Conquest)	27 4WD=Sport Utility (Raider)
M=Medium	S=Special		41 FWD=4-Dr Sedan (Colt & Eagle Vista)	45 FWD=4-Dr Station Wagon (Colt)
				45 FWD-4WD=Station Wagon (Vista)

AR=Use as Required

# =New Part Number

- =Non Illustrated Part

Printed in U.S.A.

FEBRUARY, 1989

# 1987-88 IMPORT PARTS CATALOG

Figure 7-800  
Illus. Page 7-24

COOLING

ITEM	PART NUMBER	QTY	BODY	MODEL	DESCRIPTION
------	-------------	-----	------	-------	-------------

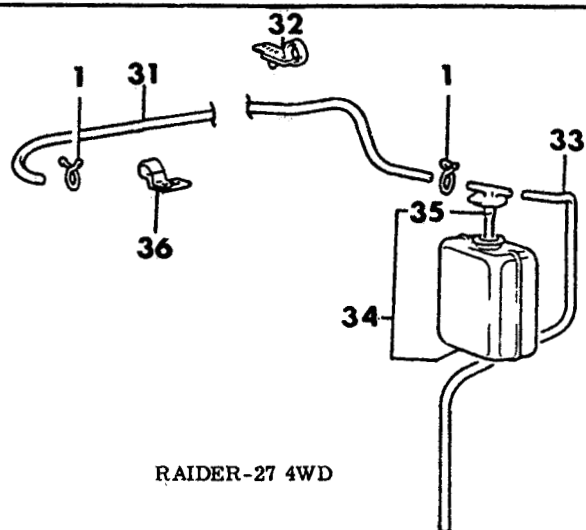
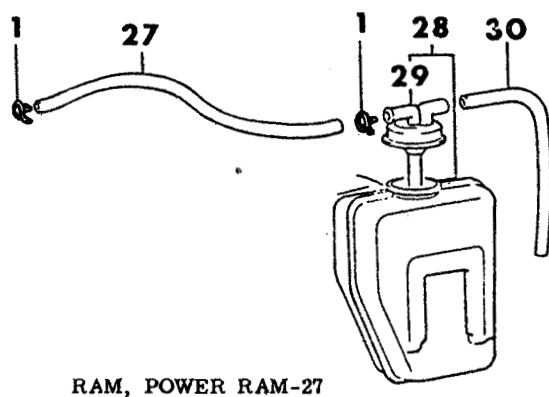
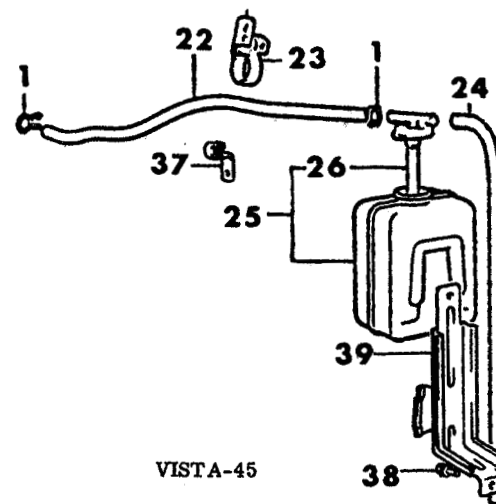
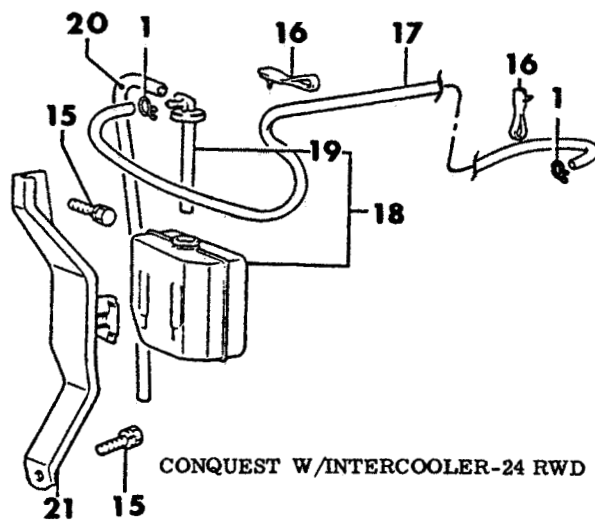
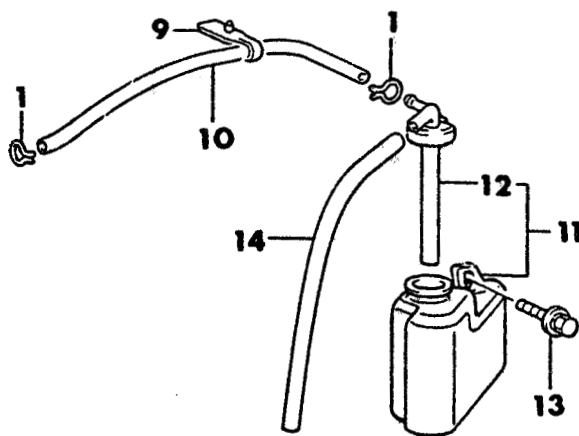
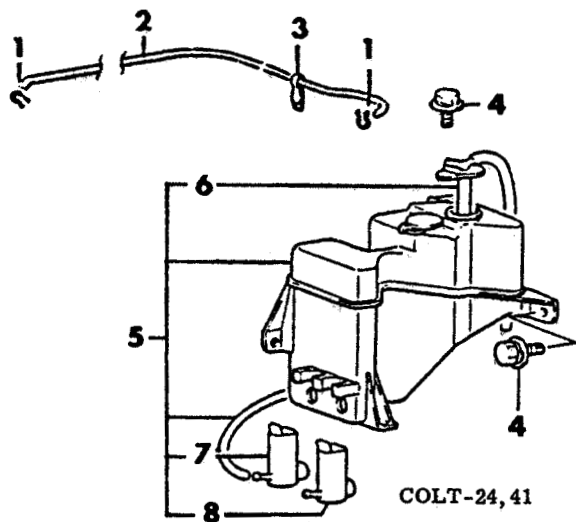
## RADIATOR AND RELATED PARTS W/INTERCOOLER 24 RWD - CONQUEST

32					DUCT, Air
	MB35 6544	1			1987
	MB35 6544	1			5 Speed 1988
	MB53 8788	1			A Trans. 1988
33	MB00 7701	1			RING, Draincock 1988

<b>ENGINE:</b>		Q=1500 cc	A=2000 cc	<b>TRANS:</b>	A=Automatic	4=4-Speed Manual
Blank=All		K=1600 cc (w/o Balance Shaft)	F=2600 cc (Car)	Blank=All	M=All Manual	5=5-Speed Manual
		W=2600 cc (Truck)				8=4 x 2 Manual
<b>SERIES:</b>	H=High	<b>MODELS:</b> 24 FWD=2-Dr Hatchback (Colt)		27 RWD-4WD=Pickup (Ram 50, Power Ram 50)		
L=Low	P=Premium	24 RWD=2-Dr Hatchback (Conquest)		27 4WD=Sport Utility (Raider)	45 FWD=4-Dr Station Wagon (Colt)	
M=Medium	S=Special	41 FWD=4-Dr Sedan (Colt & Eagle Vista)			45 FWD-4WD=Station Wagon (Vista)	
AR=Use as Required		# =New Part Number	— =Non Illustrated Part		Printed in U.S.A.	FEBRUARY, 1989

## CONDENSER TANKS

7707 1300 B



# 1987-88 IMPORT PARTS CATALOG

Figure 7-1300  
Illus. Page 7-37

## COOLING

ITEM	PART NUMBER	QTY	BODY	MODEL	DESCRIPTION
CONDENSER TANKS					
1	MS66 0205	2			CLIP, Hose (11)
2	MS60 0699	1			HOSE, Rubber (7x900)
3	MS47 0402	1			BAND, Cable (55)
4	MS24 0141	4			BOLT and WASHER
5					TANK ASSEMBLY, Washer and Condenser (refer to group 23D)
6		1			CAP, Washer Tank (refer to group 23D)
7		1			MOTOR, Washer (refer to group 23D)
8		1			MOTOR, Washer w/Rear Wiper (refer to group 23D)
9	MS47 0402	1			BAND, Cable (55) - w/o Intercooler
10	MS60 0699	1			HOSE, Rubber (7x325) - w/o Intercooler (serv. in 394" roll)
11	#MB35 6648	1			TANK ASSEMBLY, Condenser - w/o Intercooler
12	MB28 3719	1			CAP ASSEMBLY - w/o Intercooler
13	MF24 7249	1			BOLT and WASHER (8x16) - w/o Intercooler
14	MB35 6392	1			HOSE, Rubber
15	MS24 0125	2			BOLT and WASHER (8x20) - w/Intercooler 1987
	MF24 7249	1			BOLT and WASHER (8x16) - Upper Bracket 1988
	MS24 0125	1			(8x20) - Lower Bracket 1988
16	MS47 0402	2			BAND, Cable (55) - w/Intercooler
17	MB03 3468	1			HOSE, Condenser Tank - w/Intercooler
18	MB35 6615	1			TANK ASSEMBLY, Condenser - w/Intercooler
19	MB28 3720	1			CAP, Condenser Tank - w/Intercooler
20	MB35 6616	1			HOSE, Condenser Tank
21	#MB35 6886	1			BRACKET, Condenser Tank - w/Intercooler 1987
					BRACKET, Condenser Tank - w/Intercooler 1988
	MB53 8994	1			Upper
	MB53 8995	1			Lower
22					HOSE, Rubber (7x480)
	MS60 0699	1			up to Nov. 1986
	MB22 1895	1			after Dec. 1986
23	MS47 0368	1			CLIP, Snap (12-44)
24					HOSE, Rubber
	MB35 6392	1			up to Sept. 1986
	MB35 6616	1			after Oct. 1986 (1987)
	MB35 6875	1			1988
25					TANK ASSEMBLY, Condenser
	MB35 6396	1			up to Nov. 1986
	MB35 6318	1			after Dec. 1986 and up to April 1987
	MB35 6615	1			after May 1987
26					CAP, Condenser Tank
	MB28 3428	1			up to April 1987
	MB28 3720	1			after May 1987
27	MS60 0699	1			HOSE (7x450) (serv. in 394" roll)
28	MB35 6318	1			TANK ASSEMBLY, Condenser
29	MB28 3428	1			CAP, Condenser Tank
30					HOSE, Rubber
	MB35 6392	1			1987
	MB35 6616	1			1988
31	MS60 0699	1			HOSE, Rubber (7x1100)
32	MS47 0402	1			BAND, Cable (55)
33					HOSE, Rubber
	MB35 6392	1			1987

<b>ENGINE:</b>		Q=1500 cc		A=2000 cc	<b>TRANS:</b>	A=Automatic	4=4-Speed Manual
Blank=All		K=1600 cc (w/o Balance Shaft)		F=2600 cc (Car)	Blank=All	M=All Manual	5=5-Speed Manual
		W=2600 cc (Truck)					8=4 x 2 Manual
<b>SERIES:</b>		H=High	<b>MODELS:</b> 24 FWD=2-Dr Hatchback (Colt)		27 RWD=4WD=Pickup (Ram 50, Power Ram 50)		
L=Low		P=Premium	24 RWD=2-Dr Hatchback (Conquest)		27 4WD=Sport Utility (Raider)	45 FWD=4-Dr Station Wagon (Colt)	
M=Medium		S=Special	41 FWD=4-Dr Sedan (Colt & Eagle Vista)			45 FWD=4WD=Station Wagon (Vista)	
AR=Use as Required		#=New Part Number	- =Non Illustrated Part		Printed in U.S.A.		FEBRUARY, 1989

# 1987-88 IMPORT PARTS CATALOG

Figure 7-1300  
Illus. Page 7-38

COOLING

ITEM	PART NUMBER	QTY	BODY	MODEL	DESCRIPTION
------	-------------	-----	------	-------	-------------

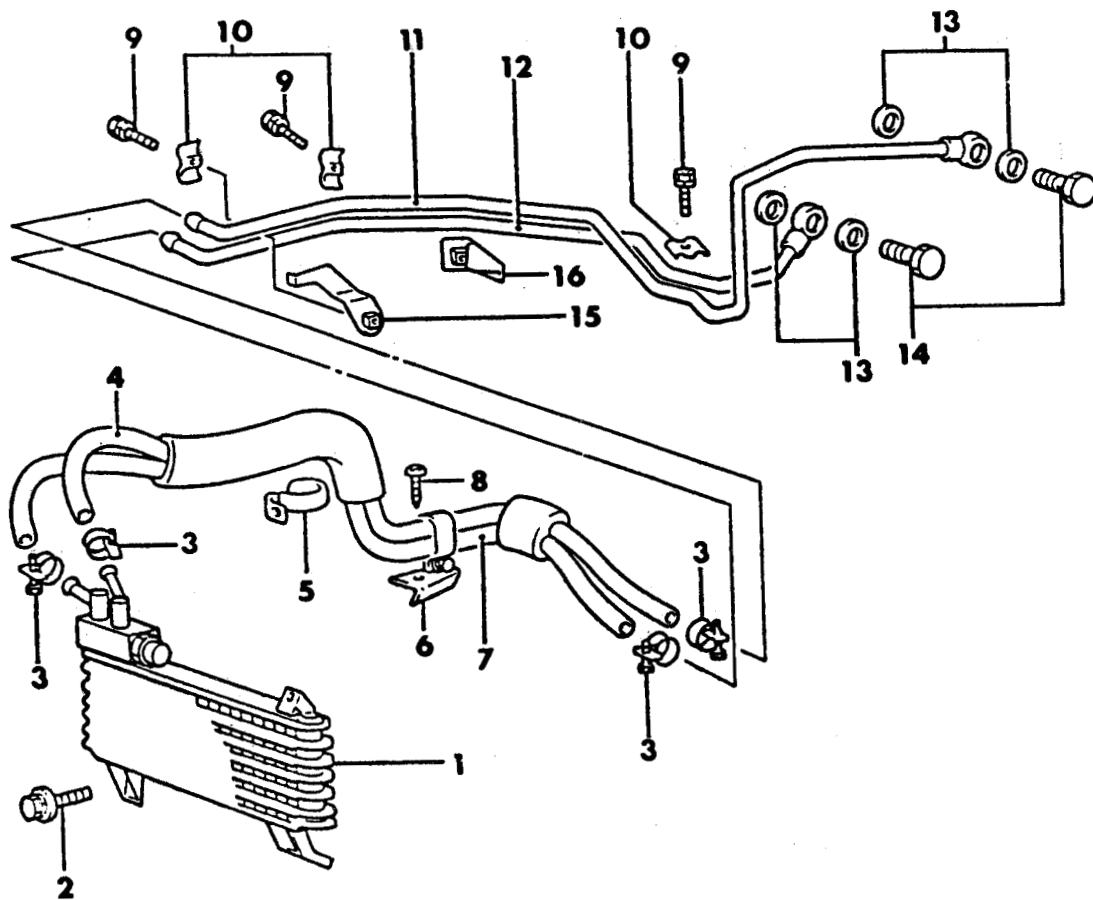
## CONDENSER TANKS

	MB35 6616	1		1988	
34				TANK, Condenser	
	MB35 6759	1		up to July 1986	
	MB35 6990	1		after Aug. 1986	
35				CAP, Condenser Tank	
	MB28 3719	1		up to July 1986	
	MB35 6908	1		after Aug. 1986	
36	MB12 9681	1		CLIP, Purge Pipe	
37	#MB35 6072	1		CLIP after Dec. 1986	
38	MF24 3648	2		BOLT and WASHER (8x14) after Dec. 1986	
39	MB22 2380	1		BRACKET, Condenser Tank after Dec. 1986	

<b>ENGINE:</b>	Q=1500 cc	A=2000 cc	<b>TRANS:</b>	A=Automatic	4=4-Speed Manual
Blank=All	K=1600 cc (w/o Balance Shaft)	F=2600 cc (Car)	Blank=All	M=All Manual	5=5-Speed Manual
	W=2600 cc (Truck)				8=4 x 2 Manual

<b>SERIES:</b>	H=High	<b>MODELS:</b>	24 FWD=2-Dr Hatchback (Colt)	27 RWD-4WD=Pickup (Ram 50, Power Ram 50)	
L=Low	P=Premium		24 RWD=2-Dr Hatchback (Conquest)	27 4WD=Sport Utility (Raider)	45 FWD=4-Dr Station Wagon (Colt)
M=Medium	S=Special		41 FWD=4-Dr Sedan (Colt & Eagle Vista)		45 FWD-4WD=Station Wagon (Vista)

AR=Use as Required # =New Part Number — =Non Illustrated Part Printed in U.S.A. FEBRUARY, 1989

**7707 1500**OIL COOLER AND LINES  
24 RWD - CONQUEST - 1987

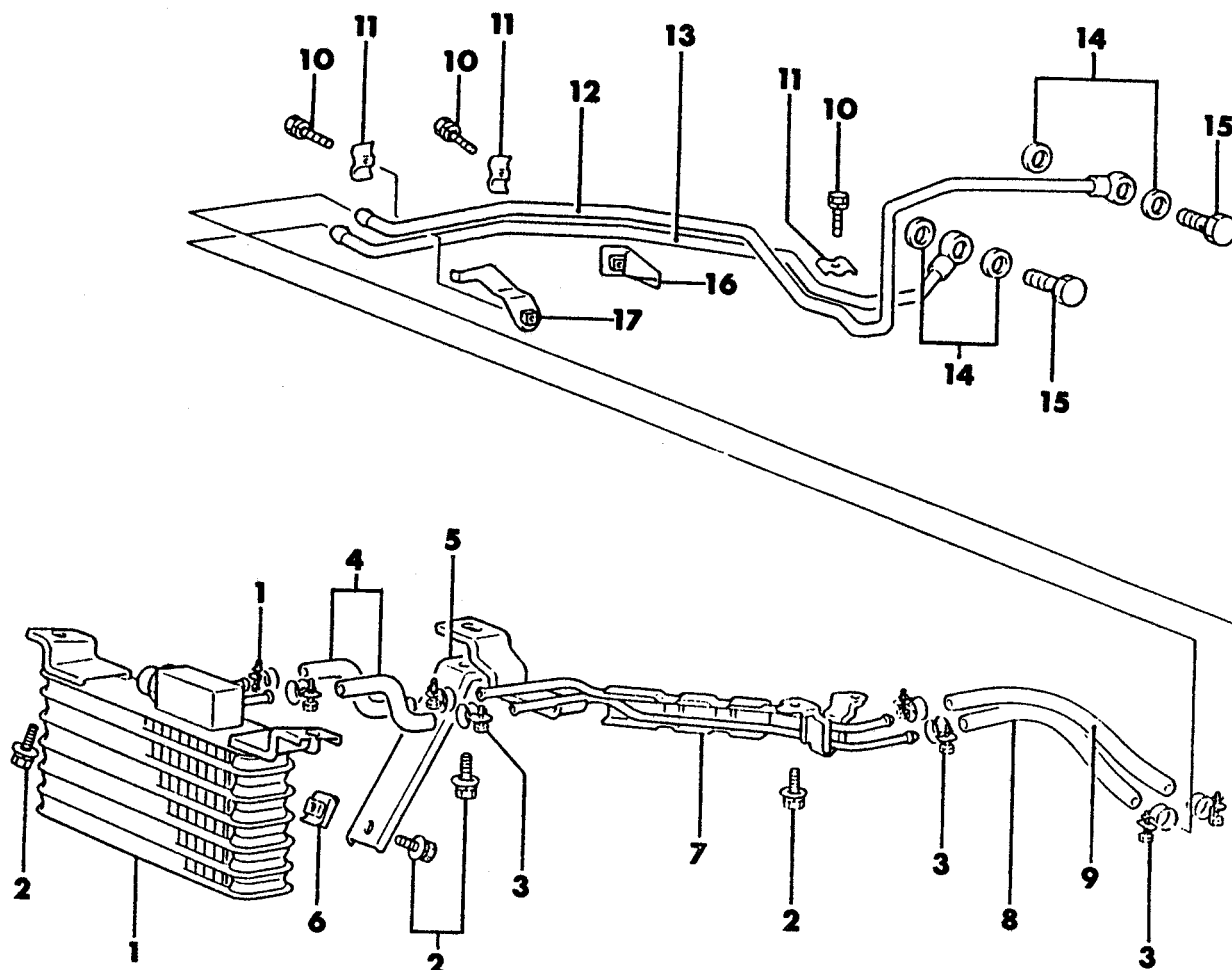
# 1987-88 IMPORT PARTS CATALOG

Figure 7-1500  
Illus. Page 7-43

## COOLING

ITEM	PART NUMBER	QTY	BODY	MODEL	DESCRIPTION
OIL COOLER AND LINES 24 RWD - CONQUEST - 1987					
1	MB03 3403	1			COOLER, Oil
2	MF24 3649	1			BOLT and WASHER (8x16)
3	MF66 1007	4			CLAMP, Hose (14)
4	#MB01 0474	1			HOSE (L=810)
5	MS47 0059	1			CLIP (80)
6	MB01 0377	1			CLAMP
7	MB03 3439	1			HOSE
8	MF45 3046	1			SCREW, Tapping (6x14)
9	MF24 0027	3			BOLT and WASHER (6x20)
10	MA15 2538	4			CLAMP, Oil Cooler Tube
11	MB03 3405	1			TUBE, Oil Return
12	MB03 3404	1			TUBE, Oil Feed
13	MF66 0065	4			GASKET (14)
14	MB03 3363	2			EYE BOLT
15	MB03 3407	1			BRACKET, Tube Oil
16	MB03 3430	1			BRACKET, Tube Oil

<b>ENGINE:</b>		Q=1500 cc	A=2000 cc	<b>TRANS:</b>	A=Automatic	4=4-Speed Manual
Blank=All		K=1600 cc (w/o Balance Shaft)	F=2600 cc (Car)	Blank=All	M=All Manual	5=5-Speed Manual
		W=2600 cc (Truck)				8=4 x 2 Manual
<b>SERIES:</b>	H=High	<b>MODELS:</b> 24 FWD=2-Dr Hatchback (Colt)		27 RWD-4WD=Pickup (Ram 50, Power Ram 50)		
L=Low	P=Premium	24 RWD=2-Dr Hatchback (Conquest)		27 4WD=Sport Utility (Raider)	45 FWD=4-Dr Station Wagon (Colt)	
M=Medium	S=Special	41 FWD=4-Dr Sedan (Colt & Eagle Vista)			45 FWD-4WD=Station Wagon (Vista)	
AR=Use as Required		# = New Part Number	-- = Non Illustrated Part	Printed in U.S.A.		FEBRUARY, 1989

**7707 1525**OIL COOLER AND LINES  
24 RWD - CONQUEST - 1988

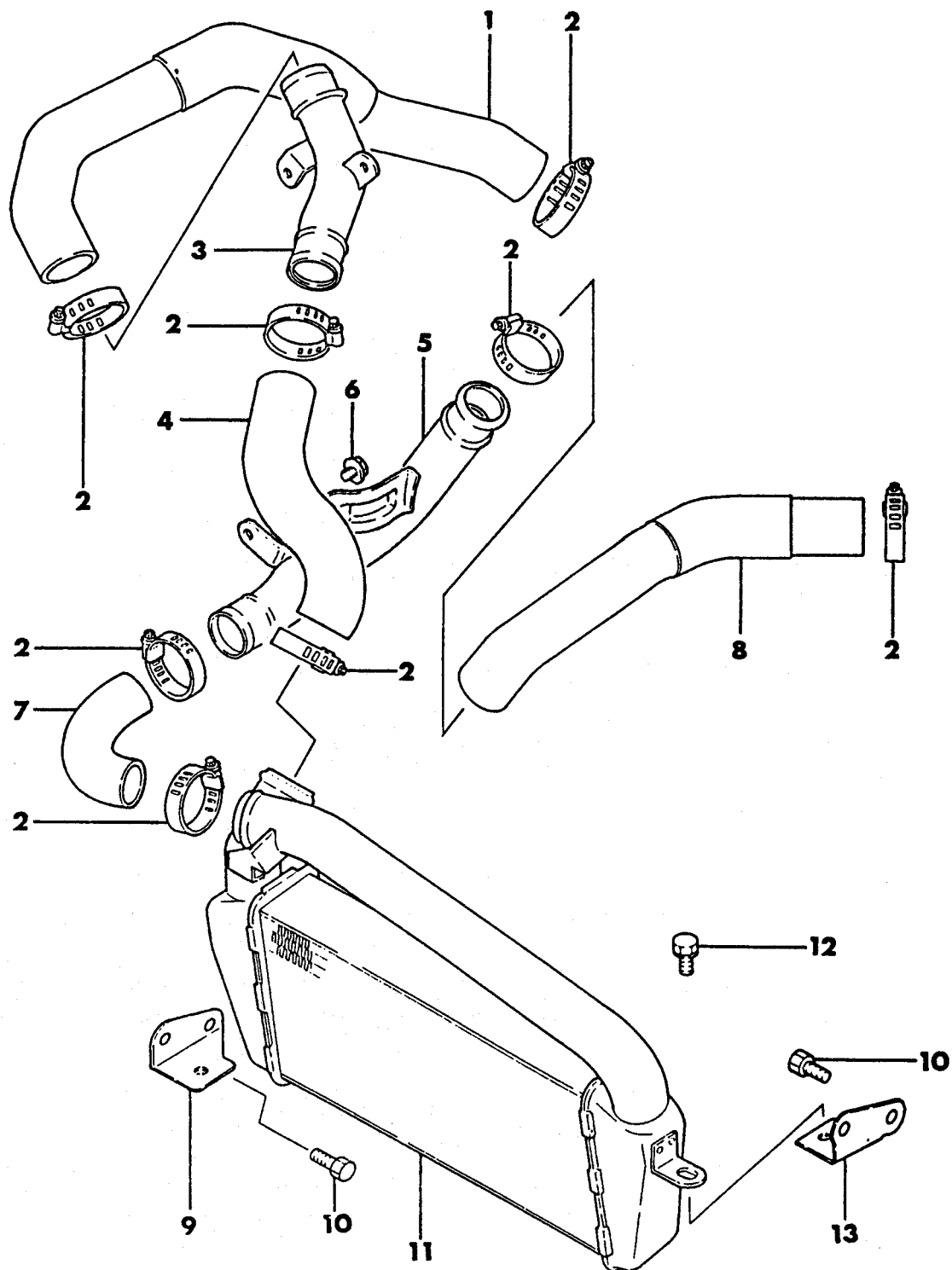
# 1987-88 IMPORT PARTS CATALOG

Figure 7-1525  
Illus. Page 7-45

## COOLING

ITEM	PART NUMBER	QTY	BODY	MODEL	DESCRIPTION
OIL COOLER AND LINES 24 RWD - CONQUEST - 1988					
1	MB01 0634	1			COOLER, Oil
2	MF24 3649	6			BOLT and WASHER (8x16)
3	MF66 1007	8			CLAMP, Hose (14)
4	MB01 0637	2			HOSE, Oil Cooler
5	MB01 0635	1			STAY, Oil Cooler
6	MB03 3161	1			NUT, Spring (8)
7	MB01 0636	1			TUBE ASSEMBLY, Oil Cooler
8	MB01 0638	1			HOSE
9	MB01 0639	1			HOSE
10	MF24 0027	3			BOLT and WASHER (6x20)
11	MA15 2538	4			CLAMP, Tube
12	MB03 3405	1			TUBE, Oil Cooler Return
13	MB03 3404	1			TUBE, Oil Cooler Feed
14	MF66 0065	4			GASKET (14)
15	MB03 3363	2			BOLT, Eye (14x27)
16	MB03 3430	1			BRACKET
17	MB03 3407	1			BRACKET

<b>ENGINE:</b>		Q=1500 cc	A=2000 cc	<b>TRANS:</b>	A=Automatic	4=4-Speed Manual
Blank=All		K=1600 cc (w/o Balance Shaft)	F=2600 cc (Car)	Blank=All	M=All Manual	5=5-Speed Manual
		W=2600 cc (Truck)				8=4 x 2 Manual
<b>SERIES:</b>	H=High	<b>MODELS:</b> 24 FWD=2-Dr Hatchback (Colt)		27 RWD=4WD=Pickup (Ram 50, Power Ram 50)		
L=Low	P=Premium	24 RWD=2-Dr Hatchback (Conquest)		27 4WD=Sport Utility (Raider) 45 FWD=4-Dr Station Wagon (Colt)		
M=Medium	S=Special	41 FWD=4-Dr Sedan (Colt & Eagle Vista)		45 FWD=4WD=Station Wagon (Vista)		
AR=Use as Required		# =New Part Number	- =Non Illustrated Part		Printed in U.S.A.	FEBRUARY, 1989

**7707 2000**INTERCOOLER  
24 RWD - CONQUEST

# 1987-88 IMPORT PARTS CATALOG

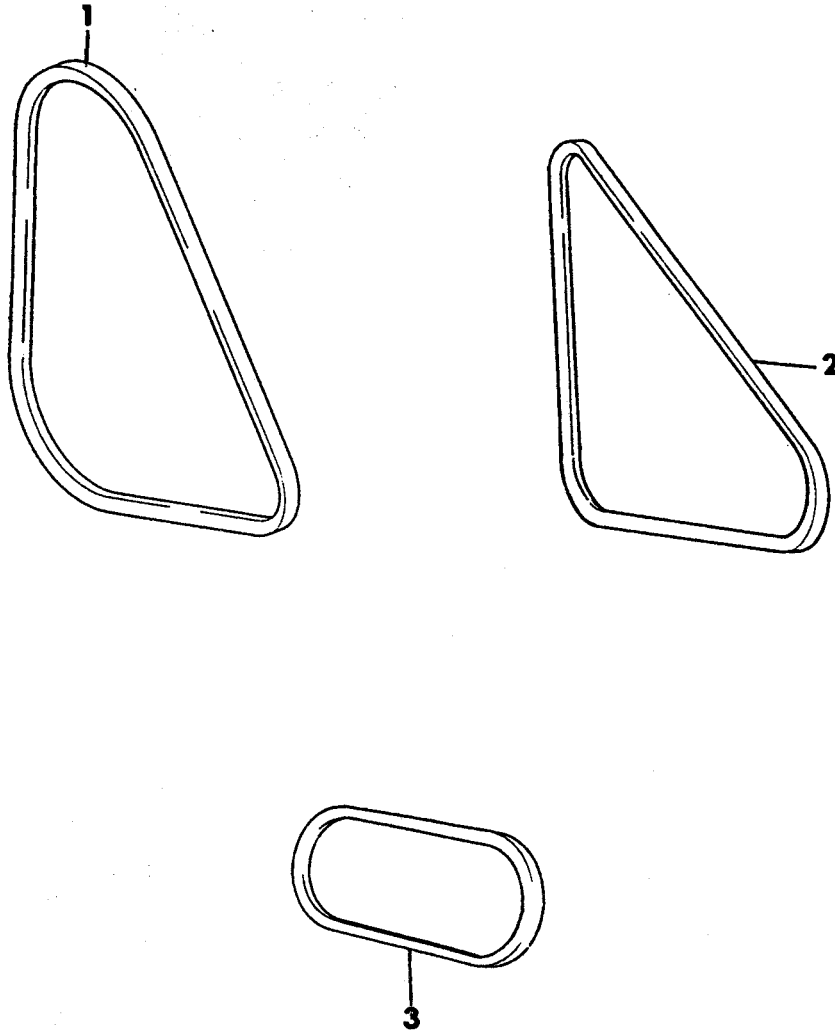
Figure 7-2000  
Illus. Page 7-57

## COOLING

ITEM	PART NUMBER	QTY	BODY	MODEL	DESCRIPTION
INTERCOOLER					
24 RWD - CONQUEST					
1	MD08 3836	1			HOSE, Air (A)
2	MD06 8344	8			CLAMP, Hose
3	MD07 1015	1			PIPE, Air (A)
4	MD08 3837	1			HOSE, Air (B)
5	MD07 1016	1			PIPE, Air (B)
6	MF14 0021	4			BOLT, Flange (8x12)
7	MD08 3838	1			HOSE, Air (C)
8	MD08 3839	1			HOSE, Air (D)
9	MD09 1229	1			BRACKET, Intercooler - Rt.
10	MB12 0731	4			BOLT (10x30) 1987
	MS24 0129	3			BOLT and WASHER (10x25) 1988
11					INTERCOOLER ASSEMBLY
	MD10 6206	1			1987
	MD11 7788	1			1988
12	MF24 3678	2			BOLT and WASHER (10x20)
13	MD08 4018	1			BRACKET, Intercooler - Lt.

<b>ENGINE:</b>		Q=1500 cc	A=2000 cc	<b>TRANS:</b>		A=Automatic	4=4-Speed Manual
Blank=All		K=1600 cc (w/o Balance Shaft)	F=2600 cc (Car)	Blank=All		M=All Manual	5=5-Speed Manual
		W=2600 cc (Truck)					8=4 x 2 Manual
<b>SERIES:</b>		H=High	<b>MODELS:</b>		24 FWD=2-Dr Hatchback (Colt)	27 RWD-4WD=Pickup (Ram 50, Power Ram 50)	
L=Low	P=Premium		24 RWD=2-Dr Hatchback (Conquest)	27 4WD=Sport Utility (Raider)	45 FWD=4-Dr Station Wagon (Colt)		
M=Medium	S=Special		41 FWD=4-Dr Sedan (Colt & Eagle Vista)		45 FWD-4WD=Station Wagon (Vista)		
AR=Use as Required		#=New Part Number	--=Non Illustrated Part		Printed in U.S.A.		FEBRUARY, 1989

## DRIVE BELTS

**7707 2100**

# 1987-88 IMPORT PARTS CATALOG

Figure 7-2100  
Illus. Page 7-59

## COOLING

ITEM	PART NUMBER	QTY	BODY	MODEL	DESCRIPTION
------	-------------	-----	------	-------	-------------

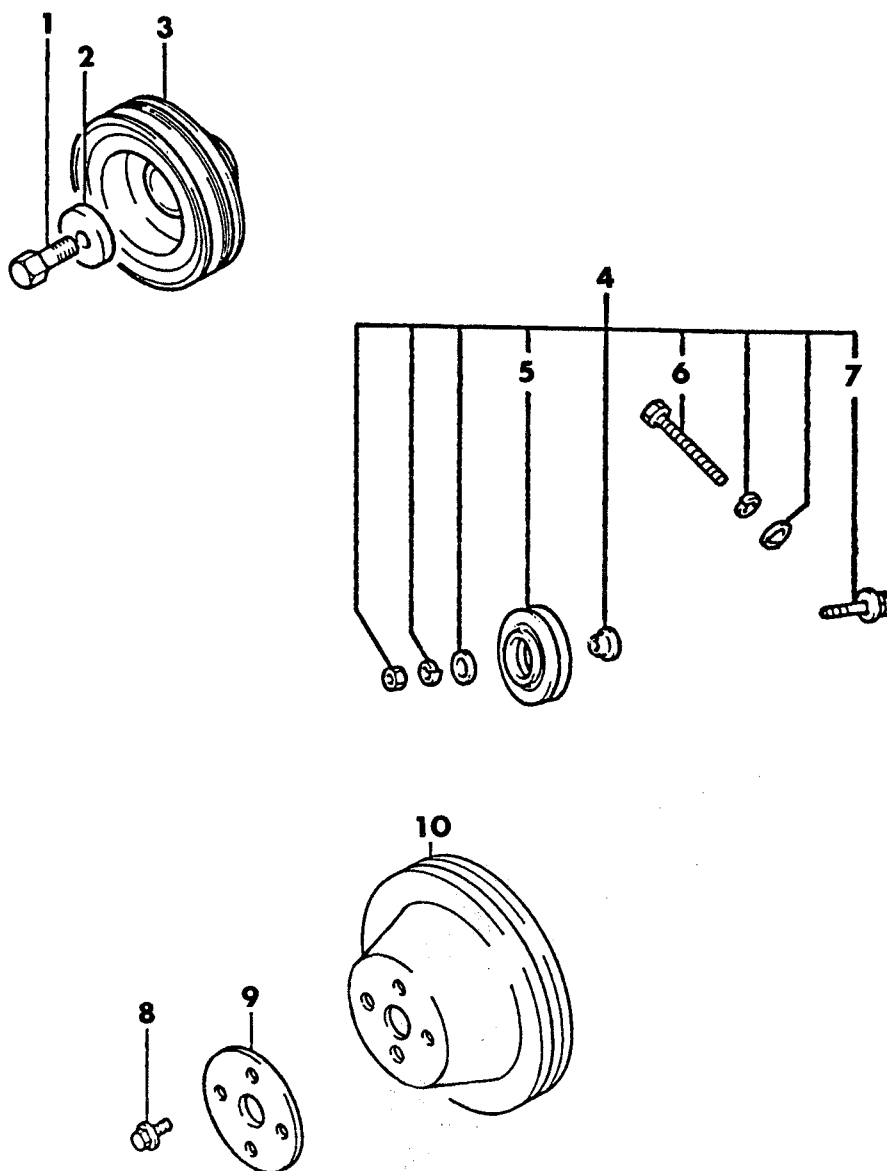
### DRIVE BELTS

1	BELT, Water Pump Drive				
	MD06 9672	1	24,41 FWD	K Eng. (B4040372)	
	MD06 9671	1	24,41 FWD	Q Eng. M Trans. (B4040340)	
	MD10 6658	1	45 FWD	Q Eng. M Trans.	
	MD10 6658	1	24,41 FWD	Q Eng. A Trans.	
	MD02 6572	1	24 RWD	F Eng. (B0013381) 1987	
	MD12 7134	1	24 RWD	1988	
	MD07 4251	1	45	A Eng. (B4040385)	
	MD02 6572	1	27 RWD	A Eng. (B0013381)	
	MD02 5826	1	27 RAM	W Eng. (B0013375)	
2	MD07 5186	1	27 RAIDER	W Eng. 5 Speed	
	MD07 4902	1	27 RAIDER	W Eng. A Trans.	
	BELT, Air Conditioning Drive				
	MB16 7066	1	24,41 FWD	K Eng. (B0017371)	
	MB16 7062	1	24,41 FWD	Q Eng. (B0017331) - up to Jan. 6, 1988	
	MB16 7063	1	24,41 FWD	after Jan. 6, 1988	B0017541
	MB19 9599	1	24 RWD	F Eng.	
	MB16 7067	1	45	A Eng.	
	MB27 2653	1	27 RWD	A Eng.	
	MB43 8517	1	27 RAM	W Eng.	
3	MB23 9498	1	27 RAIDER	W Eng.	
	BELT, Power Steering Drive				
	MB50 1593	1	24,41 FWD	K Eng. (B0017251) 1987	
	MB55 3391	1	24,41 FWD	1988	
	MB28 8838	1	24,41,45 FWD	Q Eng. (B0017245)	
	MB16 6411	1	24 RWD	F Eng. (B0017295)	
	MB19 2977	1	45	A Eng. (B0017265) up to Dec. 1986	
	MB55 3392	1	45	after Jan. 1987	
	MB19 2976	1	27 RWD	A Eng. (B0017391)	
	MB16 6411	1	27 RAM	W Eng. (B0017295)	
	MB16 6411	1	27 RAIDER	W Eng. (B0017295)	

<b>ENGINE:</b>	Q=1500 cc	A=2000 cc	<b>TRANS:</b>	A=Automatic	4=4-Speed Manual
	Blank=All	F=2600 cc (Car)		M=All Manual	5=5-Speed Manual
	W=2600 cc (Truck)				8=4 x 2 Manual

<b>SERIES:</b>	H=High	<b>MODELS:</b>	24 FWD=2-Dr Hatchback (Colt)	27 RWD-4WD=Pickup (Ram 50, Power Ram 50)
	L=Low		24 RWD=2-Dr Hatchback (Conquest)	27 4WD=Sport Utility (Raider)
	M=Medium		41 FWD=4-Dr Sedan (Colt & Eagle Vista)	45 FWD=4-Dr Station Wagon (Colt)
	S=Special			45 FWD-4WD=Station Wagon (Vista)

AR=Use as Required      # =New Part Number      - =Non Illustrated Part      Printed in U.S.A.      FEBRUARY, 1989

**7707 2300**DRIVE PULLEYS  
24 RWD - CONQUEST

# 1987-88 IMPORT PARTS CATALOG

Figure 7-2300  
Illus. Page 7-63

## COOLING

ITEM	PART NUMBER	QTY	BODY	MODEL	DESCRIPTION
------	-------------	-----	------	-------	-------------

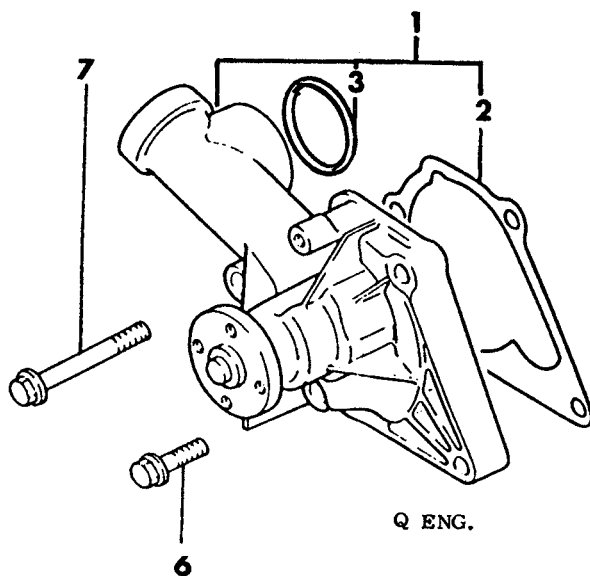
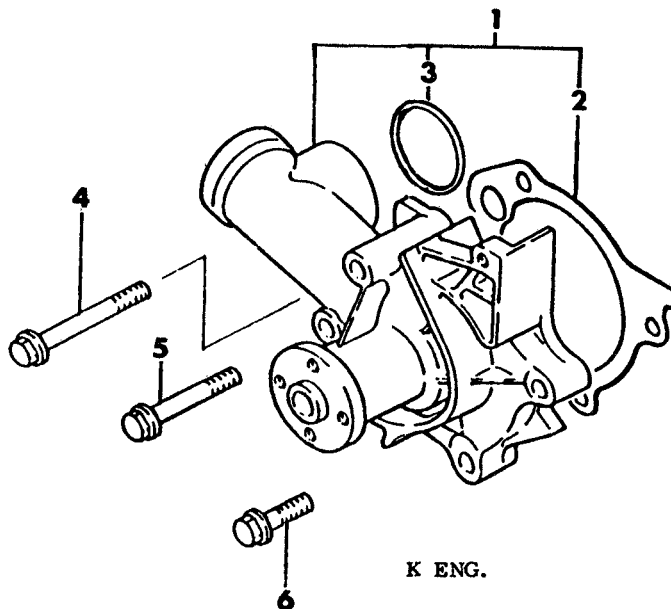
### DRIVE PULLEYS 24 RWD - CONQUEST

1	MD02 0830	1			BOLT, Crankshaft Pulley
2	MD02 0831	1			WASHER, Special
3					PULLEY, Damper
	# MD09 4106	1			1987
	MD11 6406	1			1988
4	MB23 9725	1			PULLEY ASSEMBLY, Tension
5	MB23 9728	1			PULLEY, Tension
6	MB23 9580	1			BOLT, Adjusting
7	MB23 9578	1			SHAFT
8	MF14 0210	4			BOLT, Flange (6x28) - w/o Intercooler
	MF24 1224	4			BOLT and WASHER (6x14) - w/Intercooler
9	MD10 6122	1			PLATE - w/Intercooler
10					PULLEY, Water Pump
	MD02 1496	1			1987
	# MD07 5187	1			1988

<b>ENGINE:</b>		Q=1500 cc	A=2000 cc	<b>TRANS:</b>		A=Automatic	4=4-Speed Manual
Blank=All		K=1600 cc (w/o Balance Shaft)	F=2600 cc (Car)	Blank=All		M=All Manual	5=5-Speed Manual
		W=2600 cc (Truck)					8=4 x 2 Manual
<b>SERIES:</b>		H=High	<b>MODELS:</b>		24 FWD=2-Dr Hatchback (Colt)	27 RWD-4WD=Pickup (Ram 50, Power Ram 50)	
L=Low	P=Premium		24 RWD=2-Dr Hatchback (Conquest)		27 4WD=Sport Utility (Raider)	45 FWD=4-Dr Station Wagon (Colt)	
M=Medium	S=Special		41 FWD=4-Dr Sedan (Colt & Eagle Vista)			45 FWD-4WD=Station Wagon (Vista)	
AR=Use as Required		# =New Part Number	— =Non Illustrated Part		Printed in U.S.A.		FEBRUARY, 1989

7707 2700 A

WATER PUMP  
K AND Q ENGINES



# 1987-88 IMPORT PARTS CATALOG

Figure 7-2700  
Illus. Page 7-71

## COOLING

ITEM	PART NUMBER	QTY	BODY	MODEL	DESCRIPTION
------	-------------	-----	------	-------	-------------

### WATER PUMP K AND Q ENGINES

1					WATER PUMP and GASKET PACKAGE
	MD99 7078	1			K Eng.
	MD99 7076	1			Q Eng.
2					GASKET, Water Pump
	#MD00 9006	1			K Eng.
	MD03 0757	1			Q Eng.
3	MD03 0764	1			O-RING (33.4) after Aug. 1987
4	#MF14 0238	1			BOLT, Flange (8x65)
5	#MF14 0036	1			BOLT, Flange (8x55)
6	#MF14 0028	3			BOLT, Flange (8x28)
7	#MF14 0238	1			BOLT, Flange (8x65)

<b>ENGINE:</b>		Q=1500 cc	A=2000 cc	<b>TRANS:</b>	A=Automatic	4=4-Speed Manual
Blank=All		K=1600 cc (w/o Balance Shaft)	F=2600 cc (Car)	Blank=All	M=All Manual	5=5-Speed Manual
		W=2600 cc (Truck)				8=4 x 2 Manual
<b>SERIES:</b>	H=High	<b>MODELS:</b> 24 FWD=2-Dr Hatchback (Colt)		27 RWD=4WD=Pickup (Ram 50, Power Ram 50)		
L=Low	P=Premium	24 RWD=2-Dr Hatchback (Conquest)		27 4WD=Sport Utility (Raider) 45 FWD=4-Dr Station Wagon (Colt)		
M=Medium	S=Special	41 FWD=4-Dr Sedan (Colt & Eagle Vista)		45 FWD=4WD=Station Wagon (Vista)		
AR=Use as Required		# = New Part Number	-- = Non Illustrated Part		Printed in U.S.A.	FEBRUARY, 1989

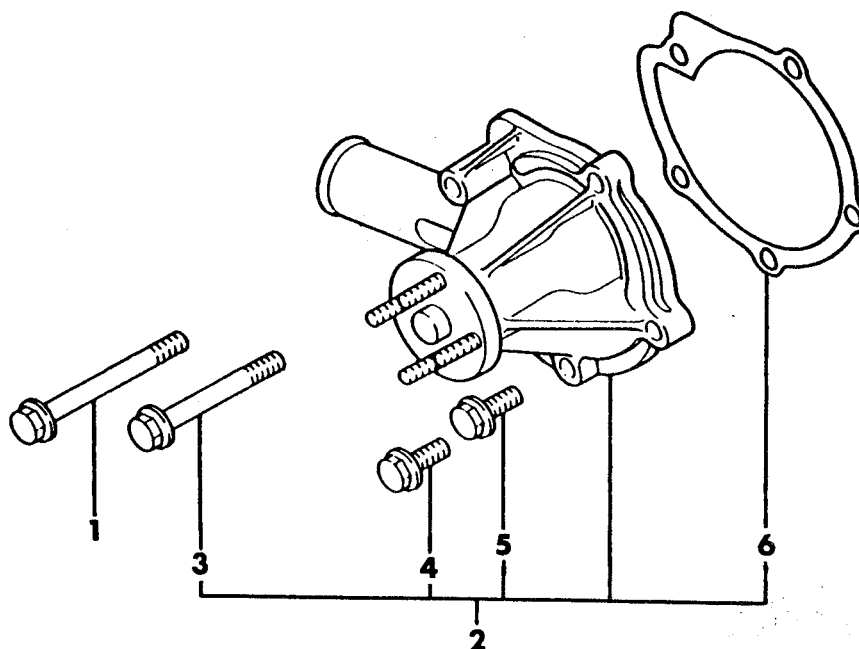
**7707 2800**WATER PUMP  
F AND W ENGINES

Figure 7-2800  
Illus. Page 7-73

## COOLING

ITEM	PART NUMBER	QTY	BODY	MODEL	DESCRIPTION
------	-------------	-----	------	-------	-------------

WATER PUMP  
F AND W ENGINES

1	MS10 1249	1	BOLT, Flange (8x88)
2			WATER PUMP and GASKET PACKAGE
	MD99 7178	1	24 RWD F Eng. up to Nov. 1986
	MD99 7403	1	24 RWD after Dec. 1986
	MD99 7158	1	24 RWD w/Intercooler up to Nov. 1986
	MD99 7404	1	24 RWD after Dec. 1986
	MD99 7178	1	W Eng.
3	MS10 1247	1	BOLT, Flange (8x78)
4	MF14 0028	3	BOLT, Flange (8x28)
5	MS10 1239	1	BOLT, Flange (8x23)
6	MD02 1495	1	GASKET, Water Pump

<b>ENGINE:</b>	Q=1500 cc	A=2000 cc	<b>TRANS:</b>	A=Automatic	4=4-Speed Manual
Blank=All	K=1600 cc (w/o Balance Shaft)	F=2600 cc (Car)	Blank=All	M=All Manual	5=5-Speed Manual
	W=2600 cc (Truck)				8=4 x 2 Manual

<b>SERIES:</b>	H=High	<b>MODELS:</b>	24 FWD=2-Dr Hatchback (Colt)	27 RWD=4WD=Pickup (Ram 50, Power Ram 50)
L=Low	P=Premium		24 RWD=2-Dr Hatchback (Conquest)	27 4WD=Sport Utility (Raider) 45 FWD=4-Dr Station Wagon (Colt)
M=Medium	S=Special		41 FWD=4-Dr Sedan (Colt & Eagle Vista)	45 FWD=4WD=Station Wagon (Vista)

AR=Use as Required

# = New Part Number

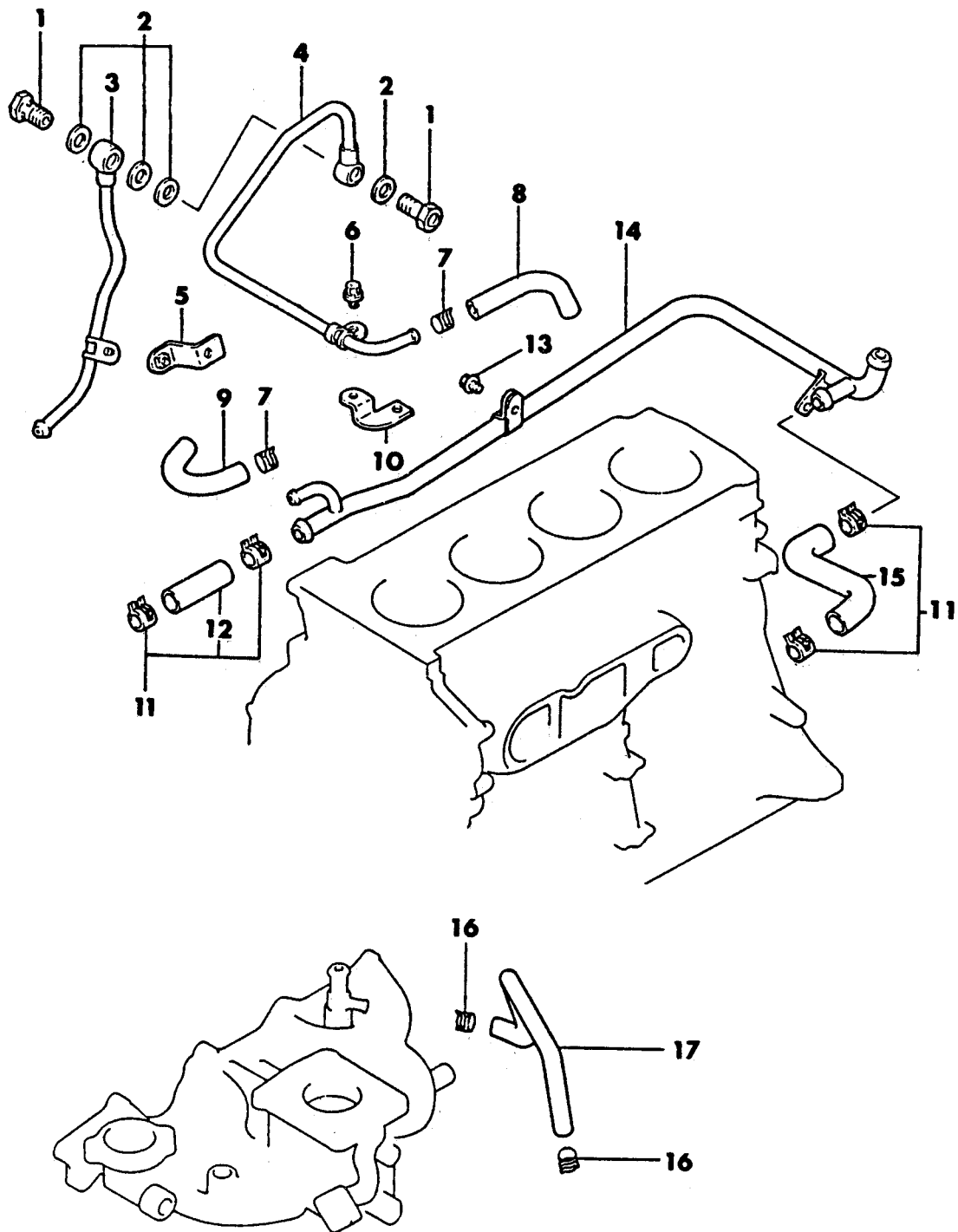
— = Non Illustrated Part

Printed in U.S.A.

FEBRUARY, 1989

WATER HOSE AND PIPE  
24 RWD - CONQUEST

7707 3200 A



# 1987-88 IMPORT PARTS CATALOG

Figure 7-3200

Illus. Page 7-83

## COOLING

ITEM	PART NUMBER	QTY	BODY	MODEL	DESCRIPTION
WATER HOSE AND PIPE					
24 RWD - CONQUEST					
1	MF65 0114	2			BOLT, Eye (14x27)
2	MF66 0065	4			GASKET (14)
3	MD09 0941	1			PIPE ASSEMBLY, Water (B)
4					PIPE ASSEMBLY, Water (A)
	MD08 6215	1			w/o Intercooler
	MD08 7360	1			w/Intercooler
5	MD08 6218	1			BRACKET, Water Pipe (B)
6	MF24 3622	2			BOLT and WASHER (6x14)
7					CLAMP, Hose (15.5)
	MS66 0166	4			1987
	MS66 0243	4			1988
8					HOSE, Water
	MD08 6220	1			up to April 1987
	MD12 0466	1			after April 1987
9					HOSE, Water
	MD09 0942	1			up to Nov. 1986
	MD12 0466	1			after Dec. 1986
10	MD08 6217	1			BRACKET, Water Pipe (A)
11					CLAMP, Hose (21.7)
	MS66 0222	4			1987
	MS66 0256	1			1988
12	MD08 6682	1			HOSE, Heater (A)
13	MF14 0202	2			BOLT, Flange (6x10)
14					PIPE ASSEMBLY, Heater
	MD09 0940	1			up to Nov. 1986
	MD02 1513	1			after Dec. 1986
15	MD00 9016	1			HOSE, Water By-Pass
16					CLAMP, Hose (13.1)
	MS66 0164	2			1987
	MS66 0240	2			1988
17	MD07 2730	1			HOSE, Water

<b>ENGINE:</b>	Q=1500 cc	A=2000 cc	<b>TRANS:</b>	A=Automatic	4=4-Speed Manual
Blank=All	K=1600 cc (w/o Balance Shaft)	F=2600 cc (Car)	Blank=All	M=All Manual	5=5-Speed Manual
	W=2600 cc (Truck)				8=4 x 2 Manual

<b>SERIES:</b>	H=High	<b>MODELS:</b>	24 FWD=2-Dr Hatchback (Colt)	27 RWD-4WD=Pickup (Ram 50, Power Ram 50)
L=Low	P=Premium		24 RWD=2-Dr Hatchback (Conquest)	27 4WD=Sport Utility (Raider)
M=Medium	S=Special		41 FWD=4-Dr Sedan (Colt & Eagle Vista)	45 FWD=4-Dr Station Wagon (Colt)
				45 FWD-4WD=Station Wagon (Vista)

AR=Use as Required

# =New Part Number

-- =Non Illustrated Part

Printed in U.S.A.

FEBRUARY, 1989