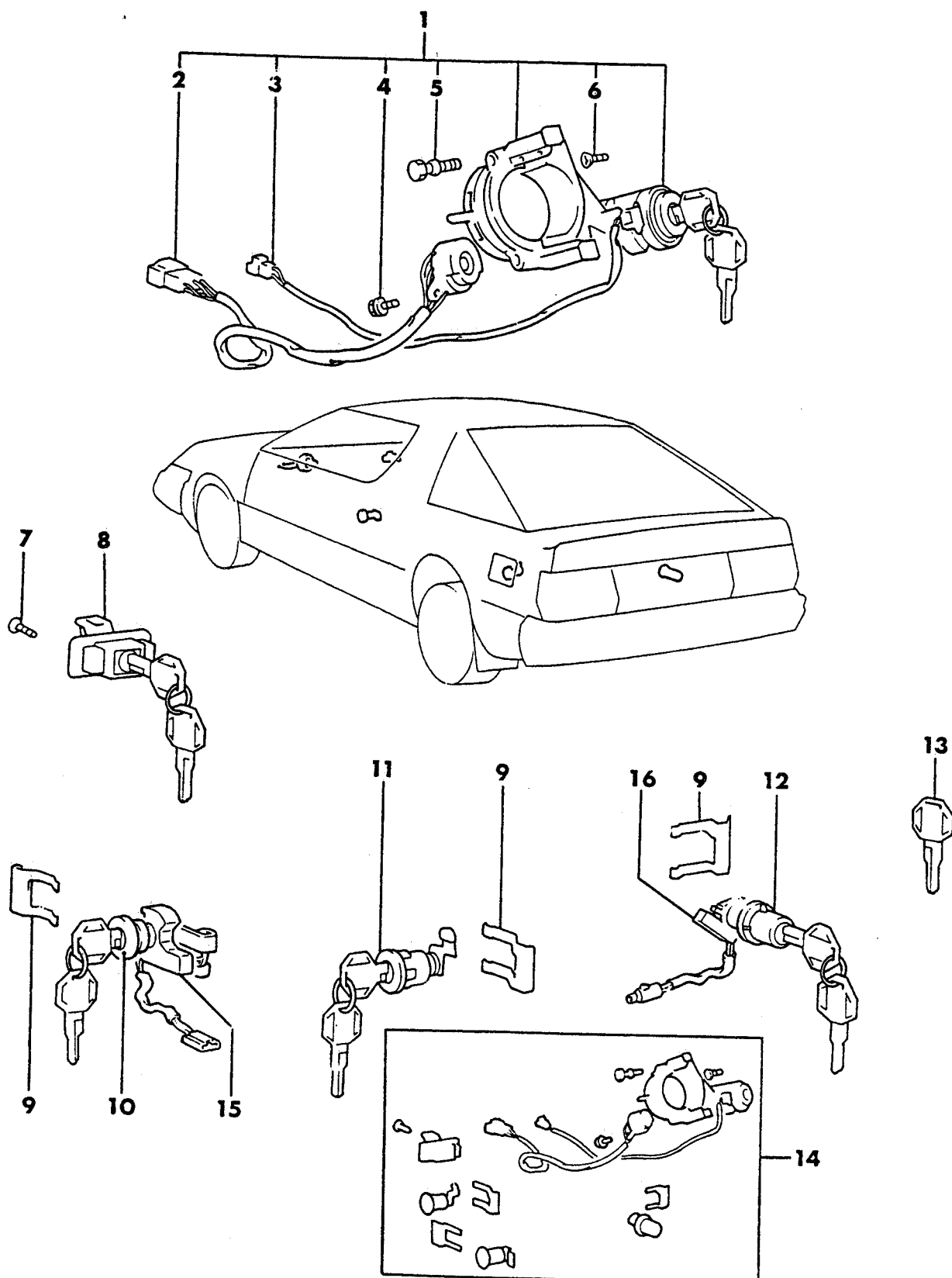


7772 400

LOCK CYLINDERS AND KEYS
24 RWD - CONQUEST



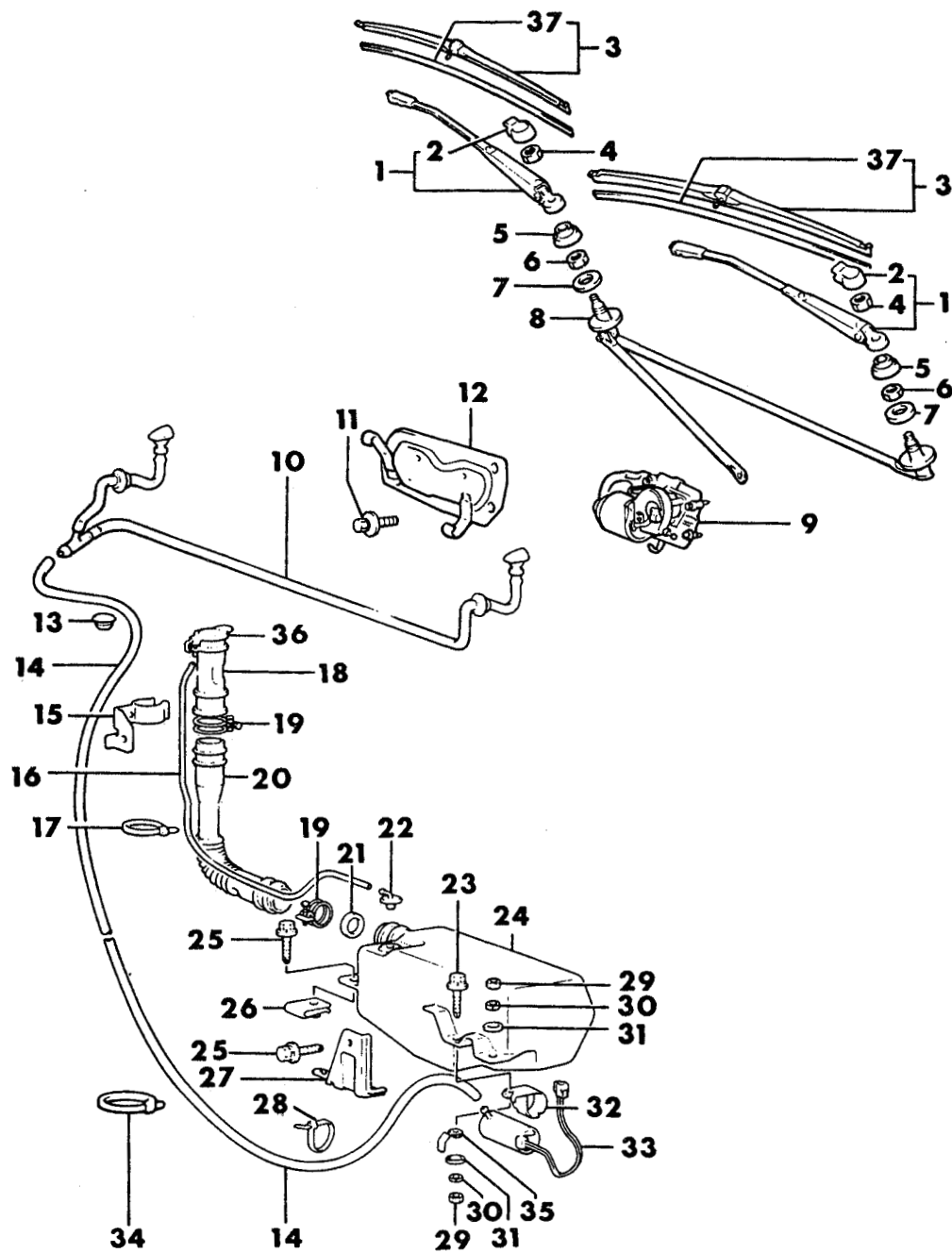
1987-88 IMPORT PARTS CATALOG

Figure 23D-400
Illus. Page 23D-11

BODY - MISCELLANEOUS

ITEM	PART NUMBER	QTY	BODY	MODEL	DESCRIPTION
LOCK CYLINDERS AND KEYS 24 RWD - CONQUEST					
1	MB39 9650	1			LOCK, Steering Wheel
2	MB39 8854	1			SWITCH, Ignition
3	MB39 8855	1			SWITCH, Warning
4	MF35 0005	1			SCREW
5	MB17 1106	2			BOLT
6	MF35 0002	2			SCREW
7	MF20 1044	2			SCREW
8					LOCK, Glove Box
	MB24 4348	1			Black
	MB38 6383	1			Red
9					RETAINER, Lock Cylinder
	MA15 5539	4			Up to 6-1-87
	MB53 7392	4			After 6-1-87
10					CYLINDER, Door Lock
	MB42 2995	1			Left
	MB42 2996	1			Right
11					CYLINDER, Fuel Filler Door
	MB28 6484	1			w/o Intercooler
	MB02 3181	1			w/Intercooler
12					CYLINDER, Tailgate Lock
	#MB54 6761	1			Up to 6-1-87
	MB53 7395	1			After 6-1-87
13	MB18 4084	1			KEY, Blank, w/Protector
14					KEY PACKAGE
	MB71 3287	1			Black
	MB71 3288	1			Red
	#MB71 3289	1			Black, w/Intercooler, Up to 6-1-87
	MB72 7754	1			Black, w/Intercooler, After 6-1-87
	#MB71 3290	1			Red, w/Intercooler, Up to 6-1-87
	MB72 7755	1			Red, w/Intercooler, After 6-1-87
15					SWITCH, Door Lock Cylinder
	MB42 2989	1			Left
	MB42 2990	1			Right
16	MB42 2988	1			SWITCH, T/Gate Lock Cylinder
	MB53 7391	1			1988

ENGINE:		Q=1500 cc	A=2000 cc	TRANS:		A=Automatic	4=4-Speed Manual
Blank=All		K=1600 cc (w/o Balance Shaft)	F=2600 cc (Car)	Blank=All		M=All Manual	5=5-Speed Manual
		W=2600 cc (Truck)					8=4 x 2 Manual
SERIES:		H=High	MODELS:		24 FWD=2-Dr Hatchback (Colt)	27 RWD-4WD=Pickup (Ram 50, Power Ram 50)	
L=Low		P=Premium			24 RWD=2-Dr Hatchback (Conquest)	27 4WD=Sport Utility (Raider)	45 FWD=4-Dr Station Wagon (Colt)
M=Medium		S=Special			41 FWD=4-Dr Sedan (Colt & Eagle Vista)		45 FWD-4WD=Station Wagon (Vista)
AR=Use as Required		#=New Part Number	--=Non Illustrated Part		Printed in U.S.A.		FEBRUARY, 1989

7772 500WINDSHIELD WIPER AND WASHER
24 RWD - CONQUEST

1987-88 IMPORT PARTS CATALOG

Figure 23D-500
Illus. Page 23D-13

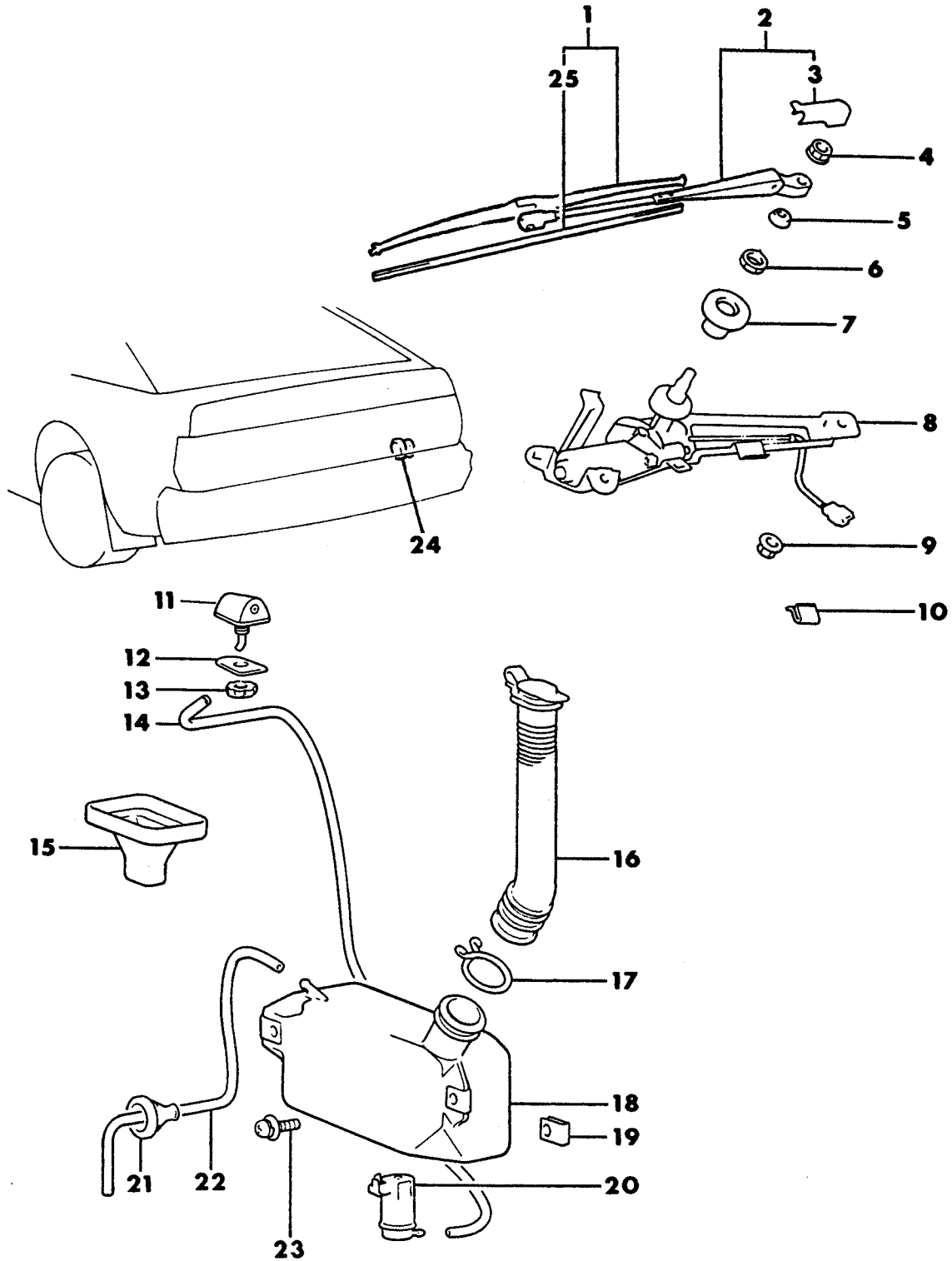
BODY - MISCELLANEOUS

ITEM	PART NUMBER	QTY	BODY	MODEL	DESCRIPTION
WINDSHIELD WIPER AND WASHER 24 RWD - CONQUEST					
1	MB18 3806	2			ARM, Wiper
2	MB26 1170	2			COVER, Head
3	MB18 3810	2			BLADE, Wiper
4	MF43 0005	2			NUT
5	MB18 3826	2			CAP, Shield
6	MB26 1168	2			NUT
7	MB26 1169	2			WASHER
8	MB18 3804	1			LINK, Wiper
9	MB18 3834	1			MOTOR, Wiper
10	MB31 4902	1			NOZZLE, Washer
11	MS24 0121	3			BOLT
12	MB33 8322	1			COVER, Cowl Top, Outer
13	MB11 8900	1			PLUG
14	MS61 0099	1			TUBE
15	MB17 1332	1			CLAMP, Hose
16	MS61 0099	1			TUBE
17	MB22 9438	2			BAND
18	MB22 9436	1			HOSE
19	MB22 9439	2			CLAMP, Hose
20	MB22 9422	1			HOSE
21	MB22 9437	1			PACKING
22	MB22 9424	1			JOINT, Elbow
23	MF24 4826	1			BOLT
24	MB35 8977	1			RESERVOIR, Washer
25	MS24 0142	3			BOLT
26	MS44 0191	2			NUT
27	MB30 5233	1			BRACKET
28	MB22 9443	1			BAND
29	MF43 0004	2			NUT
30	MF45 0404	2			WASHER
31	MF45 0004	2			WASHER
32	MB17 1598	1			SUPPORT
33	MB30 5232	1			MOTOR, w/Fluid Level Sensor
34		1			BAND, Cable (DNS)
35	MB22 9442	1			CLAMP
36	MB33 7860	1			CAP
37	MB35 4889	2			REFILL, Wiper Blade

ENGINE:		Q=1500 cc	A=2000 cc	TRANS:	A=Automatic	4=4-Speed Manual
Blank=All		K=1600 cc (w/o Balance Shaft)	F=2600 cc (Car)	Blank=All	M=All Manual	5=5-Speed Manual
		W=2600 cc (Truck)				8=4 x 2 Manual
SERIES:		H=High	MODELS:		24 FWD=2-Dr Hatchback (Colt)	27 RWD-4WD=Pickup (Ram 50, Power Ram 50)
L=Low		P=Premium			24 RWD=2-Dr Hatchback (Conquest)	27 4WD=Sport Utility (Raider)
M=Medium		S=Special			41 FWD=4-Dr Sedan (Colt & Eagle Vista)	45 FWD=4-Dr Station Wagon (Colt)
						45 FWD-4WD=Station Wagon (Vista)
AR=Use as Required		# =New Part Number	- =Non Illustrated Part		Printed in U.S.A.	FEBRUARY, 1989

LIFTGATE WIPER AND WASHER
24 RWD - CONQUEST

7772 800



1987-88 IMPORT PARTS CATALOG

Figure 23D-600
 Illus. Page 23D-15

BODY - MISCELLANEOUS

ITEM	PART NUMBER	QTY	BODY	MODEL	DESCRIPTION
LIFTGATE WIPER AND WASHER 24 RWD - CONQUEST					
1					BLADE, Wiper
	MB26 1191	1			Up to 12-1-87
	MB61 7940	1			After 12-1-87
2	MB26 1190	1			ARM, Wiper
3	MB11 4656	1			COVER, Head
4	MB08 4904	1			NUT, Spring Washer
5	MB18 3817	1			CAP, Shield
6	MB18 3816	1			NUT
7	MB18 3815	1			COLLAR
8	MB18 3812	1			MOTOR, Wiper
9	MS44 0522	1			NUT
10	MB18 3996	1			CLIP
11	MB18 3832	1			NOZZLE, Washer
12	MB30 5185	1			PACKING
13	MB11 3954	1			NUT
14	MS61 0099	1			TUBE
15	MB18 3852	1			FUNNEL
16	MB18 3853	1			HOSE and CAP
17	MB33 7922	1			CLIP
18	MB18 3856	1			RESERVOIR, Washer
19	MB19 6546	2			NUT
20	MB28 6961	1			MOTOR, Washer
21	MB17 1537	1			GROMMET
22	MS61 0099	1			TUBE
	MB18 3851	1			TUBE, Drain
23	MS35 0129	2			SCREW
24	MS66 0184	2			PLUG
25	MB26 2914	1			REFILL, Wiper Blade

ENGINE:		Q=1500 cc	A=2000 cc	TRANS:		A=Automatic	4=4-Speed Manual
Blank=All		K=1600 cc (w/o Balance Shaft)	F=2600 cc (Car)	Blank=All		M=All Manual	5=5-Speed Manual
		W=2600 cc (Truck)					8=4 x 2 Manual
SERIES:		H=High	MODELS:		24 FWD=2-Dr Hatchback (Colt)		
L=Low		P=Premium	24 RWD=2-Dr Hatchback (Conquest)		27 4WD=Sport Utility (Raider)		
M=Medium		S=Special	41 FWD=4-Dr Sedan (Colt & Eagle Vista)		45 FWD=4-Dr Station Wagon (Colt)		
					45 FWD=4WD=Station Wagon (Vista)		
AR=Use as Required		#=New Part Number	—=Non Illustrated Part		Printed in U.S.A.		
					FEBRUARY, 1989		