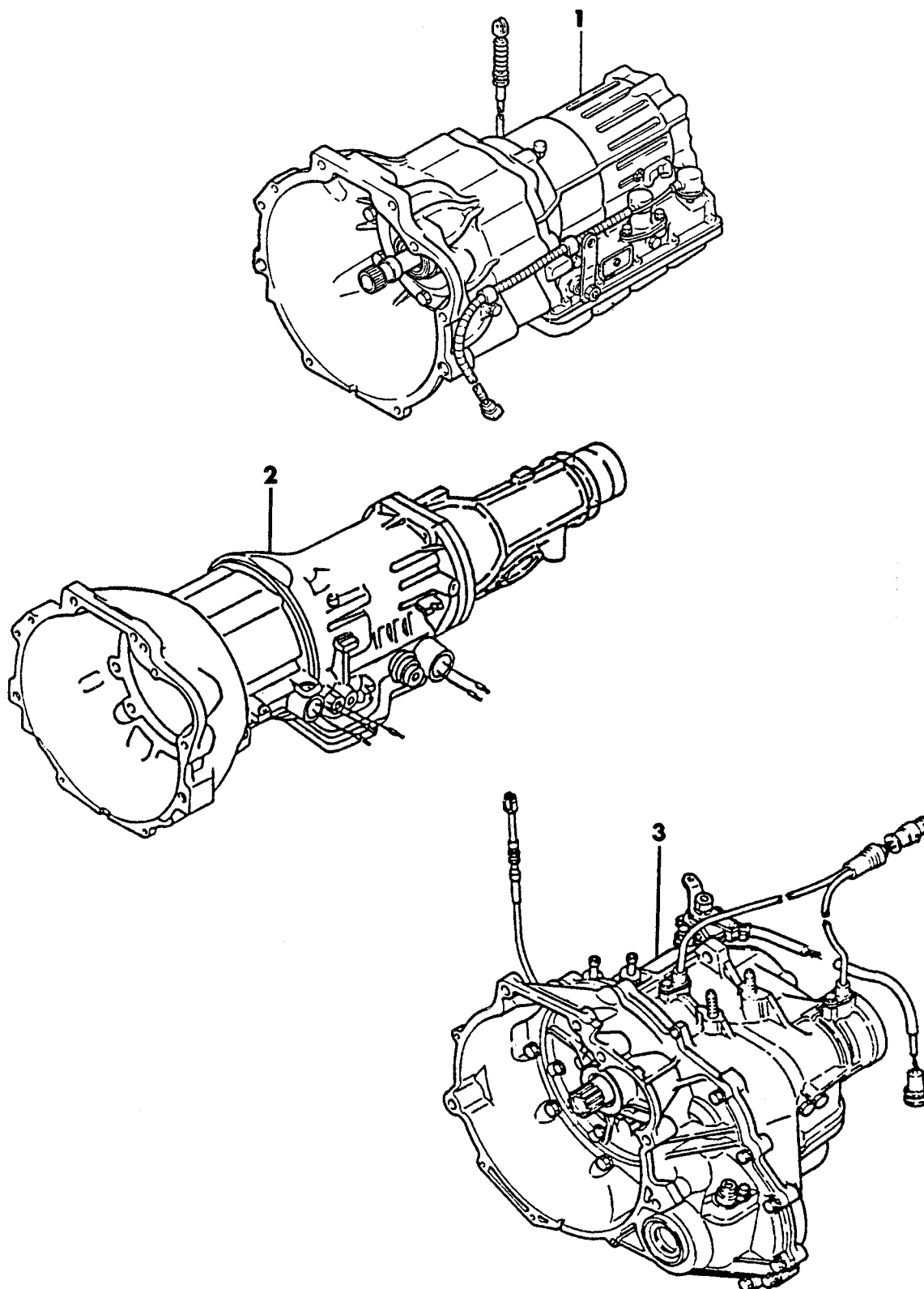


**7751 100**TRANSMISSION AND TRANSAXLE ASSEMBLIES  
AUTOMATIC TRANSMISSION  
ALL MODELS

# 1987-88 IMPORT PARTS CATALOG

Figure 21A-100  
Illus. Page 21A-5

TRANSMISSION, AUTO.

ITEM	PART NUMBER	QTY	BODY	MODEL	DESCRIPTION
------	-------------	-----	------	-------	-------------

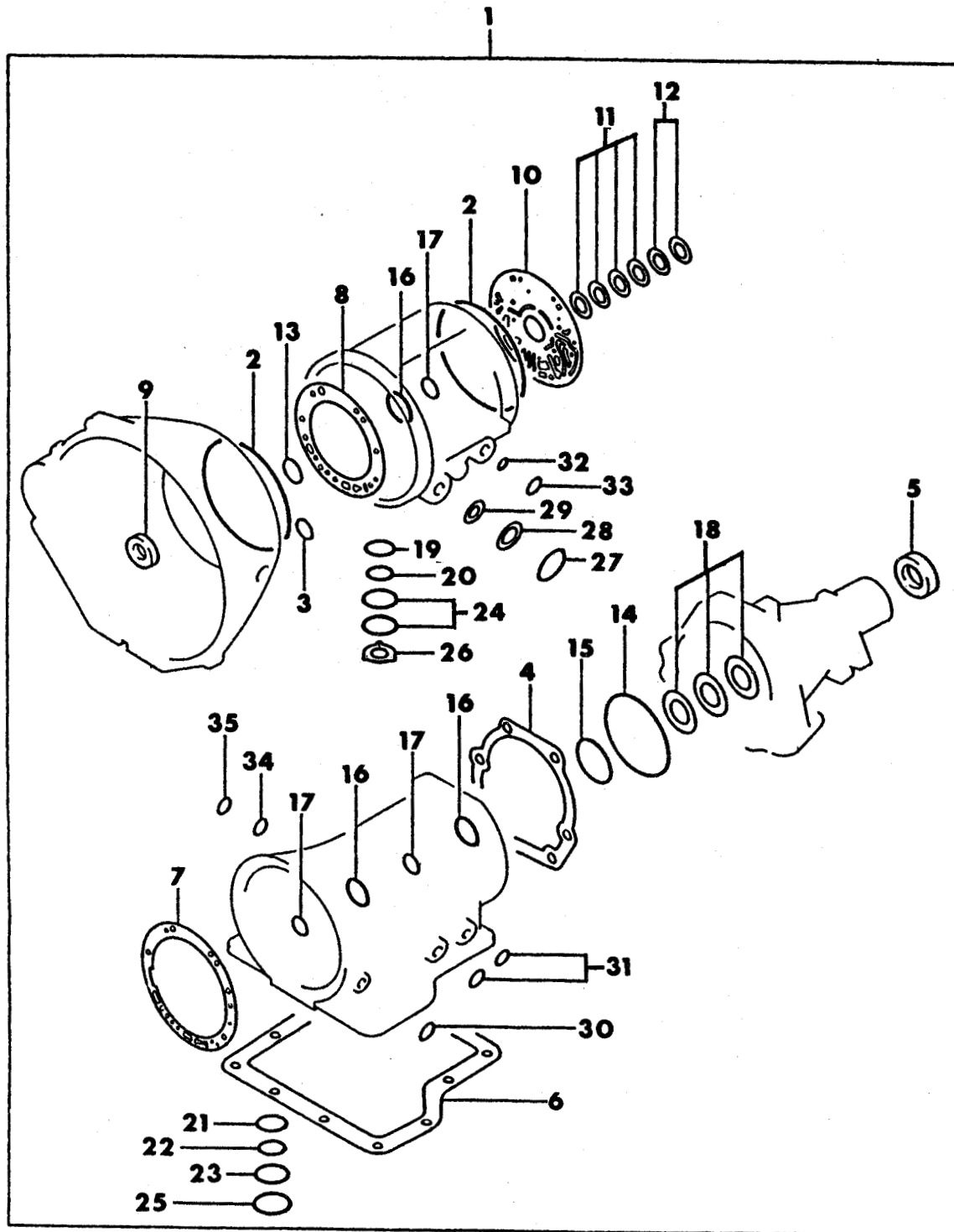
## TRANSMISSION AND TRANSAXLE ASSEMBLIES AUTOMATIC TRANSMISSION ALL MODELS

1	TRANSMISSION ASSEMBLY				
	MD72 4505	1		27 RWD	AW372-4-B2, A Eng.
	MD72 4506	1		27 RWD	AW372-4-C3, W Eng.
	MD72 4507	1		27 4WD	KM148-4-C1, W Eng.
2	MD72 4508	1		27 RAIDER	KM148-2-C, W Eng.
	TRANSMISSION ASSEMBLY				
	MD71 8401	1		24 RWD	JM600-1-C2, F Eng., 1987
	MD73 0136	1		24 RWD	JM600-2-C2, F Eng., 1988
3	TRANSAXLE ASSEMBLY				
	MD99 6091	1		24,41 FWD	KM171-1-AN7, Q Eng.
	MD99 6141	1		45 FWD	KM171-1-APM, Q Eng., From Aug. 1987
	MD99 6092	1		24,41 FWD	KM171-2-ANT7, K Eng.
	MD99 6047	1		45 FWD	KM172-0-AQ2, A Eng., Up To Nov. 1986
	MD99 6119	1		45 FWD	KM172-0-AP7, A Eng., After Nov. 1986

<b>ENGINE:</b>		Q=1500 cc	A=2000 cc	<b>TRANS:</b>	A=Automatic	4=4-Speed Manual
Blank=All		K=1600 cc (w/o Balance Shaft)	F=2600 cc (Car)	Blank=All	M=All Manual	5=5-Speed Manual
		W=2600 cc (Truck)				8=4 x 2 Manual
<b>SERIES:</b>		H=High	<b>MODELS:</b> 24 FWD=2-Dr Hatchback (Colt) 27 RWD-4WD=Pickup (Ram 50, Power Ram 50)			
L=Low		P=Premium	24 RWD=2-Dr Hatchback (Conquest) 27 4WD=Sport Utility (Raider) 45 FWD=4-Dr Station Wagon (Colt)			
M=Medium		S=Special	41 FWD=4-Dr Sedan (Colt & Eagle Vista) 45 FWD-4WD=Station Wagon (Vista)			
AR=Use as Required		# =New Part Number	- =Non Illustrated Part		Printed in U.S.A.	FEBRUARY, 1989

SEAL AND GASKET PACKAGE, COMPLETE MAJOR REPAIR  
AUTOMATIC TRANSMISSION  
24 RWD - CONQUEST

7751 1100



# 1987-88 IMPORT PARTS CATALOG

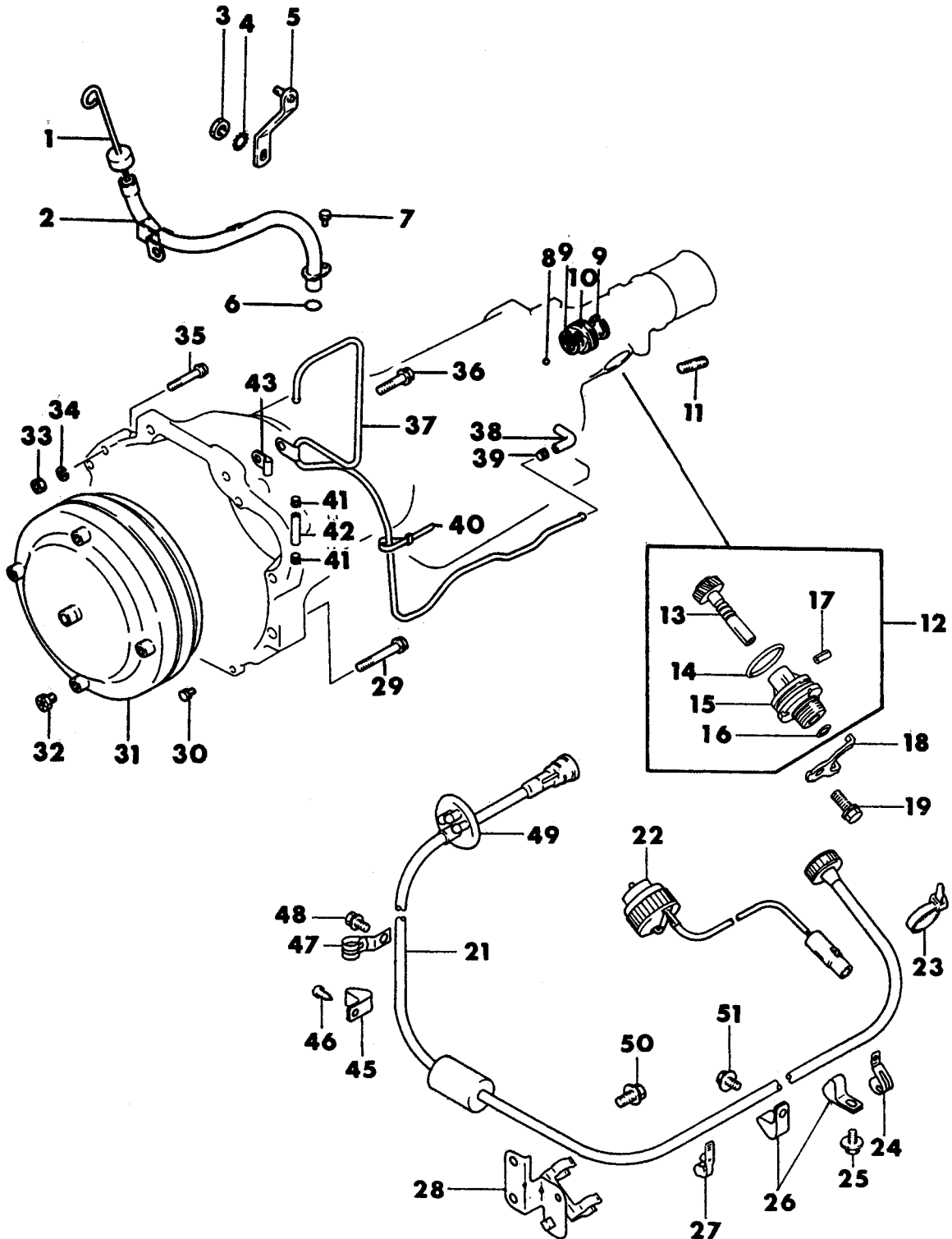
Figure 21A-1100

Illus. Page 21A-47

TRANSMISSION, AUTO.

ITEM	PART NUMBER	QTY	BODY	MODEL	DESCRIPTION
SEAL AND GASKET PACKAGE, COMPLETE MAJOR REPAIR					
AUTOMATIC TRANSMISSION					
24 RWD - CONQUEST					
1	MD61 0199	1			GASKET and SEAL PACKAGE, Major Repair, 1987
	MD61 0652	1			1988
2	MD61 0009	2			SEAL, O-Ring (200)
3	MD61 0003	1			SEAL, O-Ring (8)
4	MD61 0051	1			GASKET, Extension Housing
5	MD61 0057	1			OIL SEAL
6	MD61 0160	1			GASKET, Oil Pan
7	MD61 0354	1			GASKET, Drum Support
8	MD61 0220	1			GASKET, Oil Pump
9	MD61 0203	1			SEAL, Oil Pump Housing
10	MD61 0316	1			GASKET, Drum Support, Front
11	MD61 0351	4			SEAL RING
12	MD61 0352	2			SEAL RING, Rear
13	MD61 0006	1			O-RING, (18.5), 1987
	MD61 0019	1			1988
14	MD61 0155	1			D-RING, (132)
15	MD61 0153	1			O-RING, (55.6)
16	MD61 0266	3			D-RING, (116)
17	MD61 0267	3			O-RING, (46.1)
18	MD61 0467	3			SEAL RING, 1987
	MD61 0470	3			1988
19	MD61 0304	1			D-RING, (60)
20	MD61 0306	1			D-RING, (36), 1987
	MD61 0321	1			(40), 1988
21	MD61 0356	1			SEAL, Lathe Cut Ring (72)
22	MD61 0358	1			SEAL, Lathe Cut Ring (50), 1987
	MD61 0375	1			(54), 1988
23	MD61 0359	1			SEAL, Lathe Cut Ring (72.9), 1987
	MD61 0377	1			(80), 1988
24	MD61 0307	2			O-RING, (66)
25	MD61 0360	1			SEAL, O-Ring (75.8)
26	MD61 0313	1			GASKET, O/Drive Servo Cover
27	MD61 0011	1			O-RING, O/Drive Accumulator Plug
28	MD61 0013	1			SEAL RING, O/Drive Accumulator Piston
29	MD61 0015	1			SEAL RING, O/Drive Accumulator Piston, 1987
	MD61 0025	1			1988
30	MD61 0620	1			O-RING, (15.5)
31	MD61 0612	2			O-RING, (21.8)
32	MD61 0624	1			O-RING, (8)
33	MD61 0623	1			O-RING, (17.8)
34	MD61 0604	1			O-RING, (9.8)
35	MD61 0602	1			O-RING, (12.8)

<b>ENGINE:</b>		Q=1500 cc	A=2000 cc	<b>TRANS:</b>	A=Automatic	4=4-Speed Manual
Blank=All		K=1600 cc (w/o Balance Shaft)	F=2600 cc (Car)	Blank=All	M=All Manual	5=5-Speed Manual
		W=2600 cc (Truck)				8=4 x 2 Manual
<b>SERIES:</b>		H=High	<b>MODELS:</b>			
L=Low	P=Premium		24 FWD=2-Dr Hatchback (Colt)	27 RWD-4WD=Pickup (Ram 50, Power Ram 50)		
M=Medium	S=Special		24 RWD=2-Dr Hatchback (Conquest)	27 4WD=Sport Utility (Raider)	45 FWD=4-Dr Station Wagon (Colt)	
			41 FWD=4-Dr Sedan (Colt & Eagle Vista)		45 FWD-4WD=Station Wagon (Vista)	
AR=Use as Required		#=New Part Number	--=Non Illustrated Part		Printed in U.S.A.	FEBRUARY, 1989

**7751 1200**CABLE, SPEEDOMETER AND PINION  
AUTOMATIC TRANSMISSION  
24 RWD - CONQUEST

# 1987-88 IMPORT PARTS CATALOG

Figure 21A-1200

Illus. Page 21A-49

TRANSMISSION, AUTO.

ITEM	PART NUMBER	QTY	BODY	MODEL	DESCRIPTION
CABLE, SPEEDOMETER AND PINION AUTOMATIC TRANSMISSION 24 RWD - CONQUEST					
1	MD71 3262	1			GAUGE ASSEMBLY, Oil Level
2	MD71 3258	1			TUBE, Oil Filler
3	MF43 0728	1			NUT, Jam, (14)
4	MF45 0808	1			WASHER, Tooth, (14)
5	MD71 3418	1			LEVER ASSEMBLY, Manual Control
6	MD71 3850	1			O-RING
7	MF24 1223	1			BOLT, w/Washer (M6x12)
8	MD61 0510	1			BALL, Steel
9	MD61 0460	2			SNAP RING
10	MD61 0509	1			GEAR, Speedometer Drive
11	MS40 1450	2			STUD, Extension (M10x25)
12	MD71 3631	1			SLEEVE ASSEMBLY, Speedometer Driven Gear
13	MD71 3632	1			GEAR, Speedometer Driven
14	MF52 0403	1			O-RING, (35)
15	MD70 5450	1			SLEEVE, Speedo Driven Gear
16	MD70 7839	1			O-RING, S/M Driven Gear, (10)
17	MF47 2536	1			PIN, Spring, (3x16)
18	MD70 5451	1			CLAMP, Sleeve
19	MF24 1251	1			BOLT, w/Washer (M8x16)
21	MB35 9139	1			CABLE, Speedometer
22	MB38 2470	1			PULSE GENERATOR, (LCD), w/Liquid Crystal Display
23	MS47 0087	1			BAND, Cable (122)
24	MS47 0067	1			CLIP, (45)
25	MS24 0141	1			BOLT, w/Washer (M6x16)
26	MB14 1310	2			CLIP
27	MS47 0402	1			BAND, Cable (55)
28	MB28 5919	1			CLAMP, Assy., (LCD)
29	MF14 0271	2			BOLT, w/Washer (M10x65)
30	MF24 1223	2			BOLT, w/Washer (M6x12)
31	MD61 0000	1			CONVERTER, Torque, 1987
	MD72 8586	1			1988
32	MD71 3228	4			BOLT, Special
33	MF43 0005	1			NUT, (8)
34	MF45 0405	1			WASHER, Spring, (8)
35	MF14 0236	1			BOLT, Flange (M8x55)
36	MF14 0266	2			BOLT, Flange (M10x40)
37	MD71 5569	1			PIPE, Vacuum
38	MD71 3852	1			HOSE
39	MS66 0162	1			CLIP, Hose, (11)
40	MD01 3832	1			CLAMP, Hose, (110)
41	MS66 0162	2			CLIP, Hose, (11)
42	MD71 3851	1			HOSE
43	MD71 4952	1			FASTENER, Cord
45	MB09 8602	1			CLIP, Chassis Harness
46	MF45 5031	1			SCREW, Tapping (M5x12)
47	MS47 0059	1			CLIP, (80)
48	MS24 0121	1			BOLT, w/Washer (M6x16), (LCD)
49	MB48 8152	1			GROMMET, (4), (LCD)
50	MS24 0125	2			BOLT, w/Washer (M8x20)
51	MS24 0141	1			BOLT, w/Washer (M6x16)

<b>ENGINE:</b>	Q=1500 cc	A=2000 cc	<b>TRANS:</b>	A=Automatic	4=4-Speed Manual
Blank=All	K=1600 cc (w/o Balance Shaft)	F=2600 cc (Car)	Blank=All	M=All Manual	5=5-Speed Manual
	W=2600 cc (Truck)				8=4 x 2 Manual

<b>SERIES:</b>	H=High	<b>MODELS:</b>	24 FWD=2-Dr Hatchback (Colt)	27 RWD-4WD=Pickup (Ram 50, Power Ram 50)
L=Low	P=Premium		24 RWD=2-Dr Hatchback (Conquest)	27 4WD=Sport Utility (Raider)
M=Medium	S=Special		41 FWD=4-Dr Sedan (Colt & Eagle Vista)	45 FWD=4-Dr Station Wagon (Colt)
				45 FWD-4WD=Station Wagon (Vista)

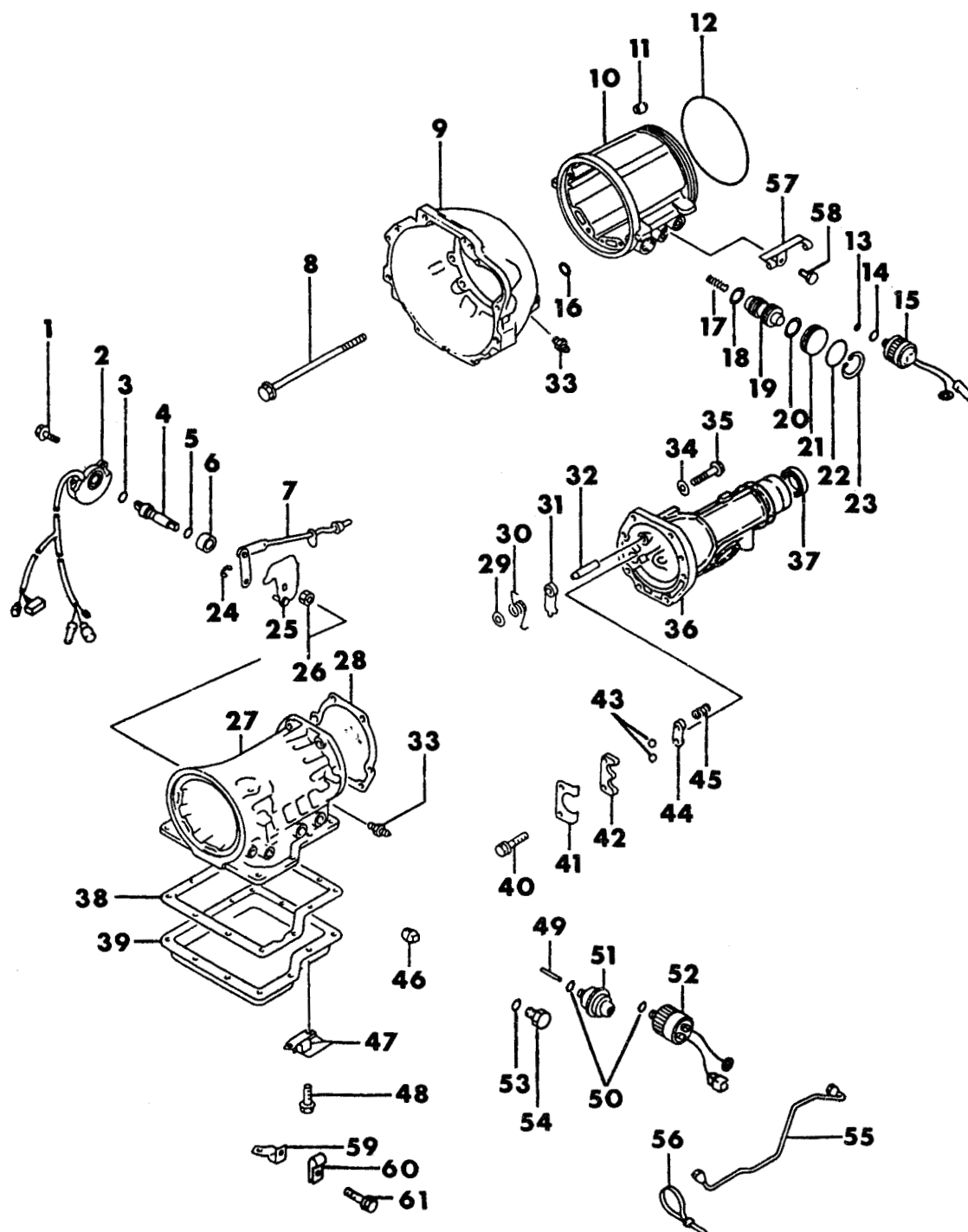
AR=Use as Required

# =New Part Number

- =Non Illustrated Part

Printed in U.S.A.

FEBRUARY, 1989

**7751 1300**CASE AND EXTENSION  
AUTOMATIC TRANSMISSION  
24 RWD - CONQUEST

# 1987-88 IMPORT PARTS CATALOG

Figure 21A-1300

Illus. Page 21A-51

TRANSMISSION, AUTO.

ITEM	PART NUMBER	QTY	BODY	MODEL	DESCRIPTION
CASE AND EXTENSION					
AUTOMATIC TRANSMISSION					
24 RWD - CONQUEST					
1	MD61 0600	2			BOLT, w/Washer (M6x20)
2	MD61 0651	1			SWITCH ASSEMBLY, Inhibitor
3	MD61 0602	1			SEAL, O-Ring, (012.8)
4	MD61 0603	1			SHAFT, Manual
5	MD61 0604	1			O-RING, (09.8)
6	MD61 0605	1			WASHER, Manual Shaft
7	MD61 0607	1			ROD ASSEMBLY, Parking
8	MD61 0004	6			BOLT, Hexagon, (M10x182)
9	MD61 0001	1			HOUSING, Converter
10	MD61 0007	1			CASE, Overdrive, 1987
	MD61 0023	1			1988
11	MD61 0008	1			VALVE ASSEMBLY, One Way
12	MD61 0009	1			SEAL, O-Ring, (200)
13	MD61 0624	1			O-RING, (8)
14	MD61 0623	1			O-RING, (17.8)
15	MD61 0622	1			SOLENOID, O/Drive Cancel
16	MD61 0003	1			SEAL, O-Ring, (08)
17	MD61 0016	1			SPRING, Accumulator, 1987
	MD61 0024	1			1988
18	MD61 0015	1			SEAL RING, O/Drive Accumulator Piston, 1987
	MD61 0025	1			1988
19	MD61 0014	1			PISTON, Accumulator, 1987
	MD61 0026	1			1988
20	MD61 0013	1			SEAL RING, O/Drive Accumulator Piston
21	MD61 0012	1			PLUG, Accumulator
22	MD61 0011	1			SEAL, O-Ring O/Drive Accum. Plug
23	MD61 0010	1			SNAP RING
24	MD61 0606	1			SNAP RING
25	MD61 0609	1			PLATE ASSEMBLY, Manual
26	MD61 0610	1			NUT, (M14)
27	MD61 0159	1			CASE, Transmission, 1987
	MD61 0020	1			1988
28	MD61 0051	1			GASKET, Extension
29	MD61 0052	1			SPACER, Parking Pawl
30	MD61 0053	1			SPRING, Return Pawl
31	MD61 0054	1			PAWL, Parking
32	MD61 0055	1			SHAFT, Parking Pawl
33	MD61 0002	2			CONNECTOR, Straight
34	MD61 0101	8			WASHER, Plain
35	MD61 0100	8			BOLT, (M8x30)
36	MD61 0056	1			EXTENSION ASSEMBLY, Trans. Rear
37	MD61 0057	1			OIL SEAL
38	MD61 0160	1			GASKET, Oil Pan
39	MD61 0161	1			PAN, Oil
40	MD61 0058	2			BOLT, Flange (M6x32)
41	MD61 0059	1			PLATE, Parking Retaining
42	MD61 0060	1			SUPPORT, Parking Actuator
43	MD61 0061	2			BALL, Steel
44	MD61 0062	1			RETAINER, Parking Spring
45	MD61 0063	2			SPRING, Parking Ball
46	MD61 0156	2			PLUG, Square Head, (PT 1/8)

<b>ENGINE:</b>	Q=1500 cc	A=2000 cc	<b>TRANS:</b>	A=Automatic	4=4-Speed Manual
Blank=All	K=1600 cc (w/o Balance Shaft)	F=2600 cc (Car)	Blank=All	M=All Manual	5=5-Speed Manual
	W=2600 cc (Truck)				8=4 x 2 Manual
<b>SERIES:</b>	H=High	<b>MODELS:</b> 24 FWD=2-Dr Hatchback (Colt) 27 RWD-4WD=Pickup (Ram 50, Power Ram 50)			
L=Low	P=Premium	24 RWD=2-Dr Hatchback (Conquest) 27 4WD=Sport Utility (Raider) 45 FWD=4-Dr Station Wagon (Colt)			
M=Medium	S=Special	41 FWD=4-Dr Sedan (Colt & Eagle Vista) 45 FWD-4WD=Station Wagon (Vista)			
AR=Use as Required		# =New Part Number	— =Non Illustrated Part		Printed in U.S.A. FEBRUARY, 1989

# 1987-88 IMPORT PARTS CATALOG

Figure 21A-1300

Illus. Page 21A-52

TRANSMISSION, AUTO.

ITEM	PART NUMBER	QTY	BODY	MODEL	DESCRIPTION
------	-------------	-----	------	-------	-------------

## CASE AND EXTENSION AUTOMATIC TRANSMISSION 24 RWD - CONQUEST

47	MD61 0165	1			CLAMP, Vacuum Tube
48	MD61 0166	14			BOLT, (M6x12)
49	MD61 0614	AR			ROD, Diaphragm, L=29.0
	MD61 0615	AR			L=29.5
	MD61 0616	AR			L=30.0
	MD61 0617	AR			L=30.5
	MD61 0618	AR			L=31.0
50	MD61 0612	2			SEAL, O-Ring, (21.8)
51	MD61 0613	1			DIAPHRAGM ASSEMBLY, Vacuum
52	MD61 0611	1			SOLENOID ASSEMBLY, Down Shift
53	MD61 0620	1			O-RING, (015.5)
54	MD61 0627	1			BOLT
55	MD61 0621	1			TUBE ASSEMBLY, Governor
56	MD61 0626	3			WIRING, Clip
57	MD61 0625	1			BRACKET
58	MD61 0166	1			BOLT, (M6x12)
59	MD61 0162	1			BRACKET, Tube Governor
60	MD61 0164	1			CLIP, Tube Governor
61	MD61 0163	1			BOLT, (M6x20)

<b>ENGINE:</b>	Q=1500 cc	A=2000 cc	<b>TRANS:</b>	A=Automatic	4=4-Speed Manual
Blank=All	K=1600 cc (w/o Balance Shaft)	F=2600 cc (Car)	Blank=All	M=All Manual	5=5-Speed Manual
	W=2600 cc (Truck)				8=4 x 2 Manual

<b>SERIES:</b>	H=High	<b>MODELS:</b>	24 FWD=2-Dr Hatchback (Colt)	27 RWD-4WD=Pickup (Ram 50, Power Ram 50)
L=Low	P=Premium		24 RWD=2-Dr Hatchback (Conquest)	27 4WD=Sport Utility (Raider)
M=Medium	S=Special		41 FWD=4-Dr Sedan (Colt & Eagle Vista)	45 FWD=4-Dr Station Wagon (Colt)
				45 FWD-4WD=Station Wagon (Vista)

AR=Use as Required

# =New Part Number

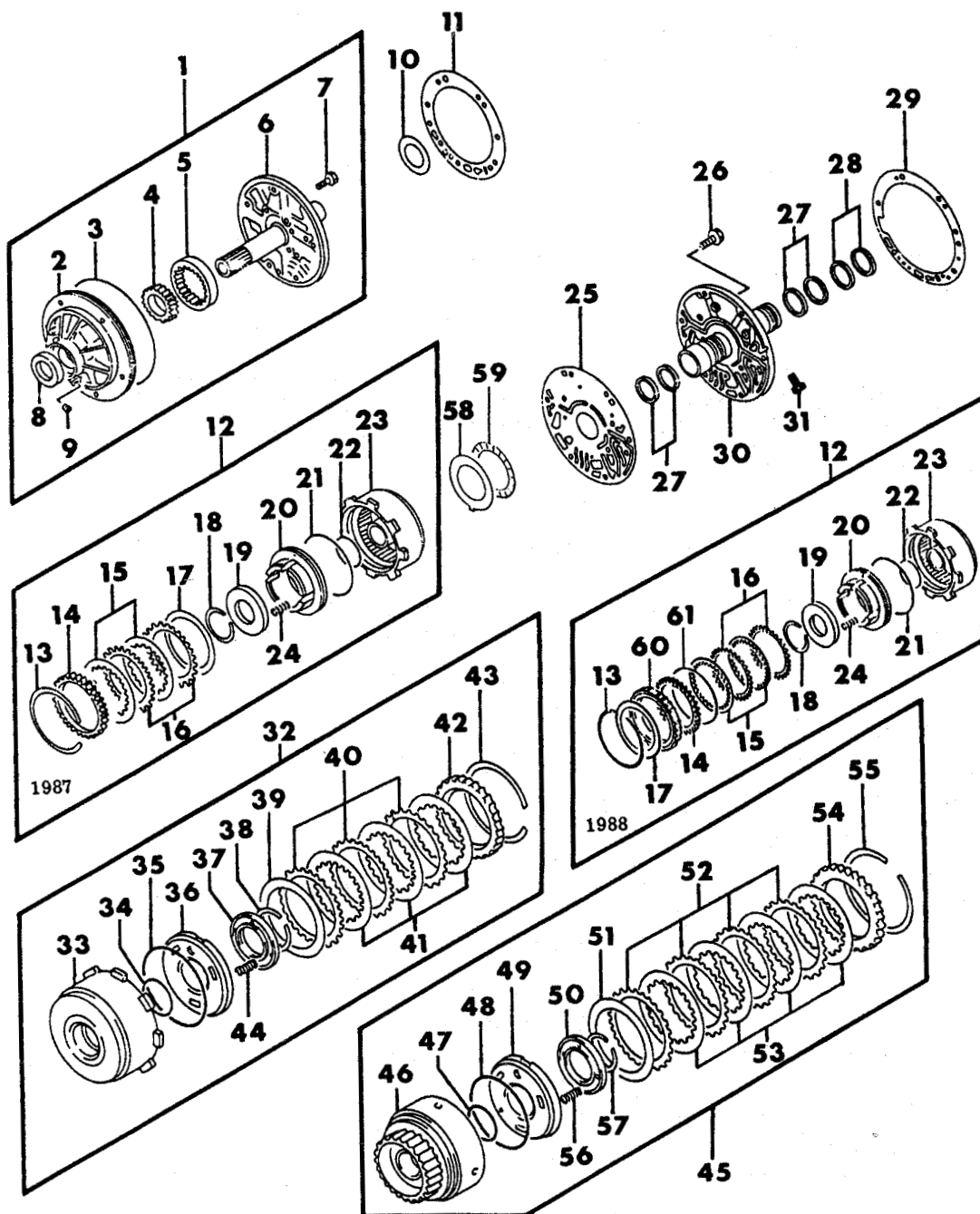
- =Non Illustrated Part

Printed in U.S.A.

FEBRUARY, 1989

7751 1400 B

PUMP, OIL, FRONT AND REAR CLUTCH  
AUTOMATIC TRANSMISSION  
24 RWD - CONQUEST



# 1987-88 IMPORT PARTS CATALOG

Figure 21A-1400  
Illus. Page 21A-55

TRANSMISSION, AUTO.

ITEM	PART NUMBER	QTY	BODY	MODEL	DESCRIPTION
PUMP, OIL, FRONT AND REAR CLUTCH AUTOMATIC TRANSMISSION 24 RWD - CONQUEST					
1	MD61 0200	1			PUMP ASSEMBLY, Oil, 1987
	MD61 0270	1			1988
2	MD61 0201	1			HOUSING ASSEMBLY, Oil Pump
3	MD61 0009	1			SEAL, O-Ring, (200)
4	MD61 0204	1			GEAR, Oil Pump Inner
	MD61 0205	1			GEAR, Oil Pump Inner
	MD61 0206	1			GEAR, Oil Pump Inner
5	MD61 0207	1			GEAR, Oil Pump Outer
	MD61 0208	1			GEAR, Oil Pump Outer
	MD61 0209	1			GEAR, Oil Pump Outer
6	MD61 0210	1			COVER ASSEMBLY, Oil Pump, 1987
	MD61 0271	1			1988
7	MD61 0211	5			BOLT, (M6x20)
8	MD61 0203	1			SEAL, Oil Pump Hsg.
9	MD61 0202	2			PLUG
10	MD61 0212	AR			WASHER, Thrust, 1.3
	MD61 0213	AR			1.5
	MD61 0214	AR			1.7
	MD61 0215	AR			1.9
	MD61 0216	AR			2.1
	MD61 0217	AR			2.3
	MD61 0218	AR			2.5
	MD61 0219	AR			2.7
11	MD61 0220	1			GASKET, Oil Pump
12	MD61 0250	1			CLUTCH ASSEMBLY, Direct, 1987
	MD61 0280	1			1988
13	MD61 0251	1			SNAP RING
14	MD61 0369	AR			PLATE, Retaining, 5.6, 1987
	MD61 0370	AR			5.8, 1987
	MD61 0371	AR			6.0, 1987
	MD61 0372	AR			6.2, 1987
	MD61 0256	AR			6.4, 1987
	MD61 0257	AR			6.6, 1987
	MD61 0258	AR			6.8, 1987
	MD61 0259	AR			7.0, 1987
	MD61 0281	1			1988
15	MD61 0260	2			PLATE ASSEMBLY, Drive
16	MD61 0261	2			PLATE, Driven, 1987
	MD61 0227	2			1988
17	MD61 0262	2			PLATE, Dished, 1987
	MD61 0294	AR			RACE, Side, 0.4, 1988
	MD61 0295	AR			0.6, 1988
	MD61 0296	AR			0.8, 1988
	MD61 0297	AR			1.0, 1988
	MD61 0298	AR			1.2, 1988
18	MD61 0263	1			SNAP RING
19	MD61 0264	1			RETAINER, Spring
20	MD61 0265	1			PISTON ASSEMBLY, Clutch
21	MD61 0266	1			SEAL, O-Ring, (116)
22	MD61 0267	1			SEAL, O-Ring, (46.1)
23	MD61 0269	1			DRUM ASSEMBLY, Direct Clutch, 1987

<b>ENGINE:</b>	Q=1500 cc	A=2000 cc	<b>TRANS:</b>	A=Automatic	4=4-Speed Manual
Blank=All	K=1600 cc (w/o Balance Shaft)	F=2600 cc (Car)	Blank=All	M=All Manual	5=5-Speed Manual
	W=2600 cc (Truck)				8=4 x 2 Manual

<b>SERIES:</b>	H=High	<b>MODELS:</b>	24 FWD=2-Dr Hatchback (Colt)	27 RWD-4WD=Pickup (Ram 50, Power Ram 50)
L=Low	P=Premium		24 RWD=2-Dr Hatchback (Conquest)	27 4WD=Sport Utility (Raider)
M=Medium	S=Special		41 FWD=4-Dr Sedan (Colt & Eagle Vista)	45 FWD=4-Dr Station Wagon (Colt)
				45 FWD-4WD=Station Wagon (Vista)

AR=Use as Required

# =New Part Number

--Non Illustrated Part

Printed in U.S.A.

FEBRUARY, 1989

# 1987-88 IMPORT PARTS CATALOG

Figure 21A-1400  
Illus. Page 21A-56

TRANSMISSION, AUTO.

ITEM	PART NUMBER	QTY	BODY	MODEL	DESCRIPTION
PUMP, OIL, FRONT AND REAR CLUTCH AUTOMATIC TRANSMISSION 24 RWD - CONQUEST					
	MD61 0282	1			1988
24	MD61 0268	10			SPRING, Piston Return
25	MD61 0316	1			GASKET, Drum Support, Front
26	MD61 0353	5			BOLT, Hexagon, (M6x20)
27	MD61 0351	4			SEAL RING
28	MD61 0352	2			SEAL RING, Rear
29	MD61 0354	1			GASKET, Drum Support
30	MD61 0350	1			SUPPORT ASSEMBLY, Drum
31	MD61 0317	1			PLUG, Lubrication, 1987
	MD61 0323	1			1988
32	MD61 0364	1			CLUTCH ASSEMBLY, Front, 1987
	MD61 0390	1			1988
33	MD61 0365	1			DRUM ASSEMBLY, Front Clutch, 1987
	MD61 0379	1			1988
34	MD61 0267	1			SEAL, O-Ring, (46.1)
35	MD61 0266	1			SEAL, O-Ring, (116)
36	MD61 0265	1			PISTON ASSEMBLY, Clutch
37	MD61 0264	1			RETAINER, Spring
38	MD61 0263	1			SNAP RING
39	MD61 0262	1			PLATE, Dished
40	MD61 0261	5			PLATE, Driven
41	MD61 0260	3			PLATE ASSEMBLY, Drive
42	MD61 0366	AR			PLATE, Retainer, 5.0
	MD61 0367	AR			5.2
	MD61 0368	AR			5.4
	MD61 0369	AR			5.6
	MD61 0370	AR			5.8
	MD61 0371	AR			6.0
	MD61 0372	AR			6.2
43	MD61 0251	1			SNAP RING
44	MD61 0268	5			SPRING, Piston Return
45	MD61 0400	1			CLUTCH ASSEMBLY, Rear, 1987
	MD61 0425	1			1988
46	MD61 0401	1			DRUM, Rear Clutch
47	MD61 0267	1			SEAL, O-Ring, (46.1)
48	MD61 0266	1			SEAL, O-Ring, (116)
49	MD61 0265	1			PISTON ASSEMBLY, Clutch
50	MD61 0264	1			RETAINER, Spring
51	MD61 0262	1			PLATE, Dished
52	MD61 0261	6			PLATE, Driven
53	MD61 0260	6			PLATE ASSEMBLY, Drive
54	MD61 0402	1			PLATE, Retaining, 4.8, 1987
	MD61 0372	AR			PLATE, Retaining, 6.2, 1988
	MD61 0256	AR			6.4, 1988
	MD61 0257	AR			6.6, 1988
	MD61 0258	AR			6.8, 1988
	MD61 0259	AR			7.0, 1988
	MD61 0432	AR			7.2, 1988
	MD61 0433	AR			7.4, 1988
	MD61 0434	AR			7.6, 1988
55	MD61 0251	1			SNAP RING

<b>ENGINE:</b>	Q=1500 cc	A=2000 cc	<b>TRANS:</b>	A=Automatic	4=4-Speed Manual
Blank=All	K=1600 cc (w/o Balance Shaft)	F=2600 cc (Car)	Blank=All	M=All Manual	5=5-Speed Manual
	W=2600 cc (Truck)				8=4 x 2 Manual

<b>SERIES:</b>	H=High	<b>MODELS:</b>	24 FWD=2-Dr Hatchback (Colt)	27 RWD-4WD=Pickup (Ram 50, Power Ram 50)
L=Low	P=Premium		24 RWD=2-Dr Hatchback (Conquest)	27 4WD=Sport Utility (Raider)
M=Medium	S=Special		41 FWD=4-Dr Sedan (Colt & Eagle Vista)	45 FWD=4-Dr Station Wagon (Colt)
				45 FWD-4WD=Station Wagon (Vista)

AR=Use as Required # = New Part Number -- = Non Illustrated Part Printed in U.S.A. FEBRUARY, 1989

# 1987-88 IMPORT PARTS CATALOG

Figure 21A-1400  
Illus. Page 21A-57

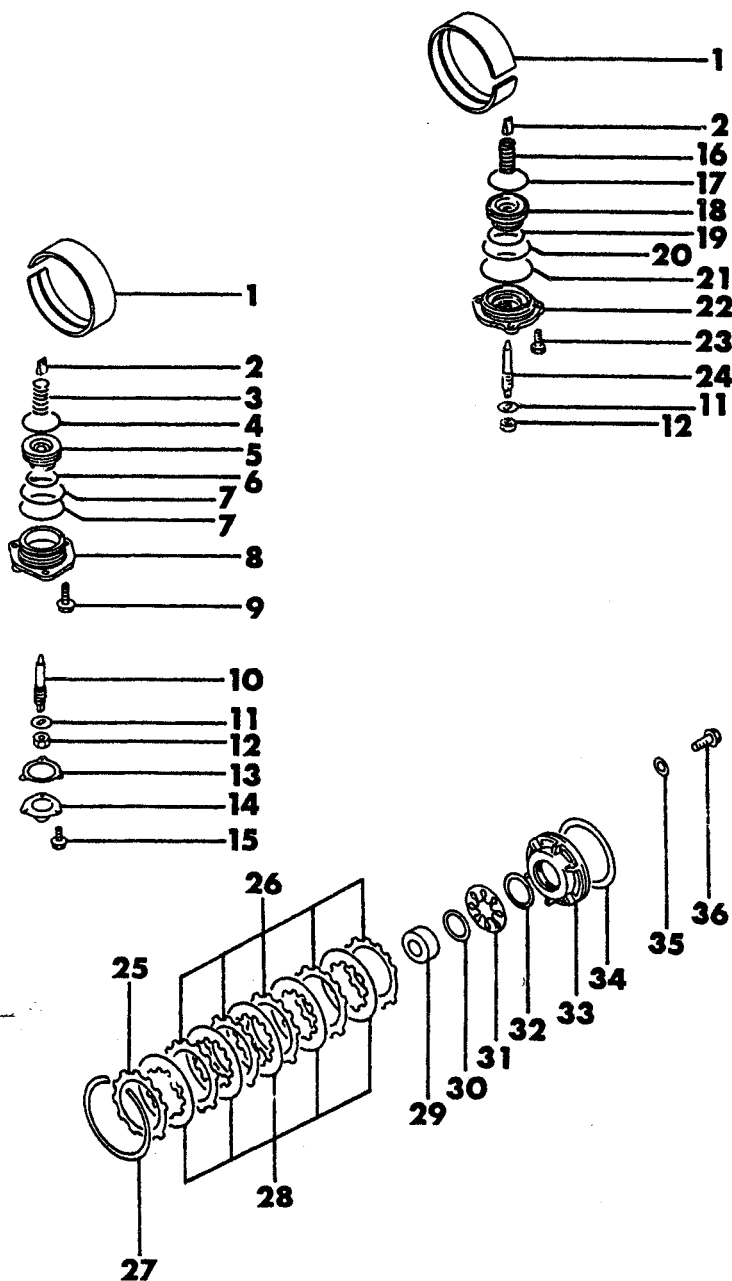
TRANSMISSION, AUTO.

ITEM	PART NUMBER	QTY	BODY	MODEL	DESCRIPTION
PUMP, OIL, FRONT AND REAR CLUTCH AUTOMATIC TRANSMISSION 24 RWD - CONQUEST					
56	MD61 0268	10			SPRING, Piston Return
57	MD61 0263	1			SNAP RING
58	MD61 0404	1			BEARING, Needle Thrust, 1988
59	MD61 0284	AR			RACE, Bearing, D/C, 0.8, 1988
	MD61 0285	AR			1.0, 1988
	MD61 0286	AR			1.2, 1988
	MD61 0287	AR			1.4, 1988
	MD61 0288	AR			1.6, 1988
	MD61 0289	AR			1.8, 1988
	MD61 0290	AR			2.0, 1988
	MD61 0291	AR			2.2, 1988
60	MD61 0292	1			CLUTCH ASSEMBLY, One-Way
61	MD61 0293	1			SNAP RING

<b>ENGINE:</b>		Q=1500 cc	A=2000 cc	<b>TRANS:</b>	A=Automatic	4=4-Speed Manual
Blank=All		K=1600 cc (w/o Balance Shaft)	F=2600 cc (Car)	Blank=All	M=All Manual	5=5-Speed Manual
		W=2600 cc (Truck)				8=4 x 2 Manual
<b>SERIES:</b>	H=High	<b>MODELS:</b> 24 FWD=2-Dr Hatchback (Colt)		27 RWD-4WD=Pickup (Ram 50, Power Ram 50)		
L=Low	P=Premium	24 RWD=2-Dr Hatchback (Conquest)		27 4WD=Sport Utility (Raider)	45 FWD=4-Dr Station Wagon (Colt)	
M=Medium	S=Special	41 FWD=4-Dr Sedan (Colt & Eagle Vista)			45 FWD-4WD=Station Wagon (Vista)	
AR=Use as Required		#=New Part Number	—=Non Illustrated Part		Printed in U.S.A.	FEBRUARY, 1989

7751 1500

BAND, BRAKE  
 AUTOMATIC TRANSMISSION  
 24 RWD - CONQUEST



# 1987-88 IMPORT PARTS CATALOG

Figure 21A-1500

Illus. Page 21A-59

TRANSMISSION, AUTO.

ITEM	PART NUMBER	QTY	BODY	MODEL	DESCRIPTION
BAND, BRAKE AUTOMATIC TRANSMISSION 24 RWD - CONQUEST					
1	MD61 0301	2			BAND ASSEMBLY, Brake
2	MD61 0302	2			STRUT, Servo
3	MD61 0303	1			SPRING, O/Drive Servo
4	MD61 0304	1			SEAL, O-Ring, (60)
5	MD61 0305	1			PISTON, O/Drive Servo, 1987
	MD61 0320	1			1988
6	MD61 0306	1			SEAL, O-Ring, (36), 1987
	MD61 0321	1			(40), 1988
7	MD61 0307	2			SEAL, O-Ring, (66)
8	MD61 0308	1			RETAINER, O/Drive Servo Piston, 1987
	MD61 0322	1			1988
9	MD61 0309	3			BOLT, (M8x20)
10	MD61 0310	1			STEM, O/Drive Servo Piston
11	MD61 0311	2			WASHER, Plain
12	MD61 0312	2			NUT, Hexagon, (M12)
13	MD61 0313	1			GASKET, O/Drive Servo Cover
14	MD61 0314	1			COVER, O/Drive Servo
15	MD61 0166	3			BOLT, (M6x12)
16	MD61 0355	1			SPRING, 2nd Servo, 1987
	MD61 0373	1			1988
17	MD61 0356	1			SEAL, Lathe Cut Ring, (72), 1987
	MD61 0377	1			(80), 1988
18	MD61 0357	1			PISTON, 2nd Servo, 1987
	MD61 0374	1			1988
19	MD61 0358	1			SEAL, Lathe Cut Ring, (50), 1987
	MD61 0375	1			(54), 1988
20	MD61 0359	1			SEAL, Lathe Cut Ring, (72.9), 1987
21	MD61 0360	1			SEAL, O-Ring, (75.8)
22	MD61 0361	1			RETAINER, 2nd Servo Piston, 1987
	MD61 0376	1			1988
23	MD61 0363	3			BOLT, (M6x16)
24	MD61 0362	1			STEM, 2nd Servo Piston
25	MD61 0103	AR			PLATE, Retaining, 11.8, 1987
	MD61 0113	AR			11.8, 1988
	MD61 0104	AR			12.0, 1987
	MD61 0114	AR			12.0, 1988
	MD61 0105	AR			12.2, 1987
	MD61 0115	AR			12.2, 1988
	MD61 0106	AR			12.4, 1987
	MD61 0116	AR			12.4, 1988
	MD61 0107	AR			12.6, 1987
	MD61 0117	AR			12.6, 1988
	MD61 0108	AR			12.8, 1987
	MD61 0118	AR			12.8, 1988
26	MD61 0110	6			PLATE, Driven, 1987
	MD61 0110	8			1988
27	MD61 0102	1			SNAP RING
28	MD61 0109	6			PLATE ASSEMBLY, Drive, 1987
	MD61 0112	8			1988
29	MD61 0150	1			RACE, Inner, 1987
	MD61 0021	1			1988

<b>ENGINE:</b>		Q=1500 cc	A=2000 cc	<b>TRANS:</b>	A=Automatic	4=4-Speed Manual
Blank=All		K=1600 cc (w/o Balance Shaft)	F=2600 cc (Car)	Blank=All	M=All Manual	5=5-Speed Manual
		W=2600 cc (Truck)				8=4 x 2 Manual
<b>SERIES:</b>		H=High	<b>MODELS:</b> 24 FWD=2-Dr Hatchback (Colt) 27 RWD-4WD=Pickup (Ram 50, Power Ram 50)			
L=Low	P=Premium		24 RWD=2-Dr Hatchback (Conquest)	27 4WD=Sport Utility (Raider)	45 FWD=4-Dr Station Wagon (Colt)	
M=Medium	S=Special		41 FWD=4-Dr Sedan (Colt & Eagle Vista)		45 FWD-4WD=Station Wagon (Vista)	
AR=Use as Required		# =New Part Number	- =Non Illustrated Part		Printed in U.S.A.	FEBRUARY, 1989

# 1987-88 IMPORT PARTS CATALOG

Figure 21A-1500  
 Illus. Page 21A-60

TRANSMISSION, AUTO.

ITEM	PART NUMBER	QTY	BODY	MODEL	DESCRIPTION
------	-------------	-----	------	-------	-------------

## BAND, BRAKE AUTOMATIC TRANSMISSION 24 RWD - CONQUEST

30	MD61 0151	1			WASHER, Return Spring Thrust
31	MD61 0152	1			SPRING, Piston Return
32	MD61 0153	1			SEAL, O-Ring, (55.6)
33	MD61 0154	1			PISTON ASSEMBLY, L/R Brake
34	MD61 0155	1			SEAL, O-Ring, (132)
35	MD61 0157	8			WASHER, Plain
36	MD61 0158	8			BOLT, Hexagon, (M6x35), 1987
	MD61 0022	8			1988

<b>ENGINE:</b>	Q=1500 cc	A=2000 cc	<b>TRANS:</b>	A=Automatic	4=4-Speed Manual
Blank=All	K=1600 cc (w/o Balance Shaft)	F=2600 cc (Car)	Blank=All	M=All Manual	5=5-Speed Manual
	W=2600 cc (Truck)				8=4 x 2 Manual

<b>SERIES:</b>	H=High	<b>MODELS:</b>	24 FWD=2-Dr Hatchback (Colt)	27 RWD-4WD=Pickup (Ram 50, Power Ram 50)
L=Low	P=Premium		24 RWD=2-Dr Hatchback (Conquest)	27 4WD=Sport Utility (Raider)
M=Medium	S=Special		41 FWD=4-Dr Sedan (Colt & Eagle Vista)	45 FWD=4-Dr Station Wagon (Colt)
				45 FWD-4WD=Station Wagon (Vista)

AR=Use as Required

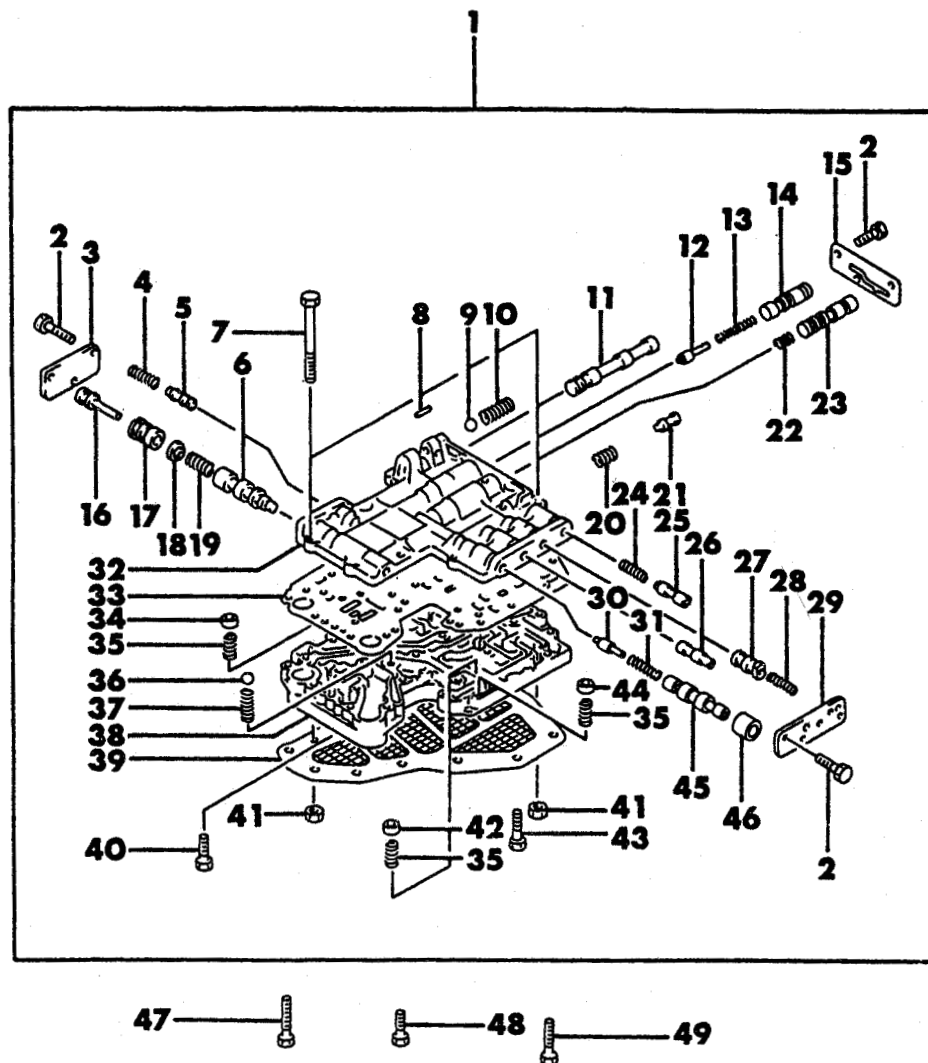
# =New Part Number

- =Non Illustrated Part

Printed in U.S.A.

FEBRUARY, 1989

7751 1800

VALVE BODY AND COMPONENTS  
AUTOMATIC TRANSMISSION  
24 RWD - CONQUEST

# 1987-88 IMPORT PARTS CATALOG

Figure 21A-1600  
Illus. Page 21A-63

TRANSMISSION, AUTO.

ITEM	PART NUMBER	QTY	BODY	MODEL	DESCRIPTION
VALVE BODY AND COMPONENTS AUTOMATIC TRANSMISSION 24 RWD - CONQUEST					
1	MD61 0700	1			VALVE ASSEMBLY, Control, 1987
	MD61 0560	1			1988
2	MD61 0701	9			BOLT, (M5x10)
3	MD61 0702	1			PLATE, Side
4	MD61 0708	1			SPRING, 2nd Lock
5	MD61 0709	1			VALVE, 2nd Lock
6	MD61 0707	1			VALVE, Pressure Regulator
7	MD61 0739	2			BOLT, Reamer (M6x57)
8	MD61 0710	1			PIN, Seat Manual Detent
9	MD61 0711	1			BALL, Steel
10	MD61 0712	1			SPRING, Manual Detent
11	MD61 0713	1			VALVE, Manual
12	MD61 0714	1			PLUG, 2nd & 3rd Shift
13	MD61 0715	1			SPRING, 1st & 2nd Shift
14	MD61 0716	1			VALVE, 1st & 2nd Shift
15	MD61 0717	1			PLATE, Side A
16	MD61 0703	1			PLUG, Pressure Regulator, 1987
	MD61 0561	1			1988
17	MD61 0704	1			SLEEVE, Pressure Regulator, 1987
	MD61 0562	1			1988
18	MD61 0705	1			SEAT, Spring
19	MD61 0706	1			SPRING, Pressure Regulator
20	MD61 0721	1			SPRING, Pressure Modifire
21	MD61 0720	1			VALVE, Pressure Modifire
22	MD61 0719	1			SPRING, 2nd & 3rd Shift
23	MD61 0718	1			VALVE, 2nd & 3rd Shift, 1987
	MD61 0564	1			1988
24	MD61 0722	1			SPRING, Solenoid D.S.
25	MD61 0723	1			VALVE, Solenoid D.S.
26	MD61 0727	1			VALVE, Throttle Vacuum
27	MD61 0724	1			VALVE, Throttle Back Up
28	MD61 0725	1			SPRING, Throttle Back Up
29	MD61 0726	1			PLATE, Side B
30	MD61 0728	1			PLUG, 3rd & 4th Shift
31	MD61 0729	1			SPRING, 3rd & 4th Shift
32	MD61 0740	1			BODY, Upper Valve
33	MD61 0732	1			PLATE, Separator, 1987
	MD61 0563	1			1988
34	MD61 0744	1			VALVE, Orifice Check, 1987
35	MD61 0742	3			SPRING, Orifice Check, 1987
	MD61 0742	1			1988
36	MD61 0733	1			BALL, Steel
37	MD61 0734	1			SPRING, Throttle Relief
38	MD61 0741	1			BODY, Lower Valve
39	MD61 0736	1			STRAINER ASSEMBLY, Oil
40	MD61 0735	7			BOLT, (M5x25)
41	MD61 0738	2			NUT, (6)
42	MD61 0743	1			VALVE, Orifice Check
43	MD61 0737	10			BOLT, (M5x40)
44	MD61 0745	1			VALVE, Orifice Check, 1987
45	MD61 0730	1			VALVE, 3rd & 4th Shift

<b>ENGINE:</b>		Q=1500 cc	A=2000 cc	<b>TRANS:</b>	A=Automatic	4=4-Speed Manual
Blank=All		K=1600 cc (w/o Balance Shaft)	F=2600 cc (Car)	Blank=All	M=All Manual	5=5-Speed Manual
		W=2600 cc (Truck)				8=4 x 2 Manual
<b>SERIES:</b>	H=High	<b>MODELS:</b> 24 FWD=2-Dr Hatchback (Colt)		27 RWD=4WD=Pickup (Ram 50, Power Ram 50)		
L=Low	P=Premium	24 RWD=2-Dr Hatchback (Conquest)		27 4WD=Sport Utility (Raider)	45 FWD=4-Dr Station Wagon (Colt)	
M=Medium	S=Special	41 FWD=4-Dr Sedan (Colt & Eagle Vista)			45 FWD=4WD=Station Wagon (Vista)	
AR=Use as Required		#=New Part Number	--=Non Illustrated Part		Printed in U.S.A.	FEBRUARY, 1989

# 1987-88 IMPORT PARTS CATALOG

Figure 21A-1600  
Illus. Page 21A-64

TRANSMISSION, AUTO.

ITEM	PART NUMBER	QTY	BODY	MODEL	DESCRIPTION
------	-------------	-----	------	-------	-------------

## VALVE BODY AND COMPONENTS AUTOMATIC TRANSMISSION 24 RWD - CONQUEST

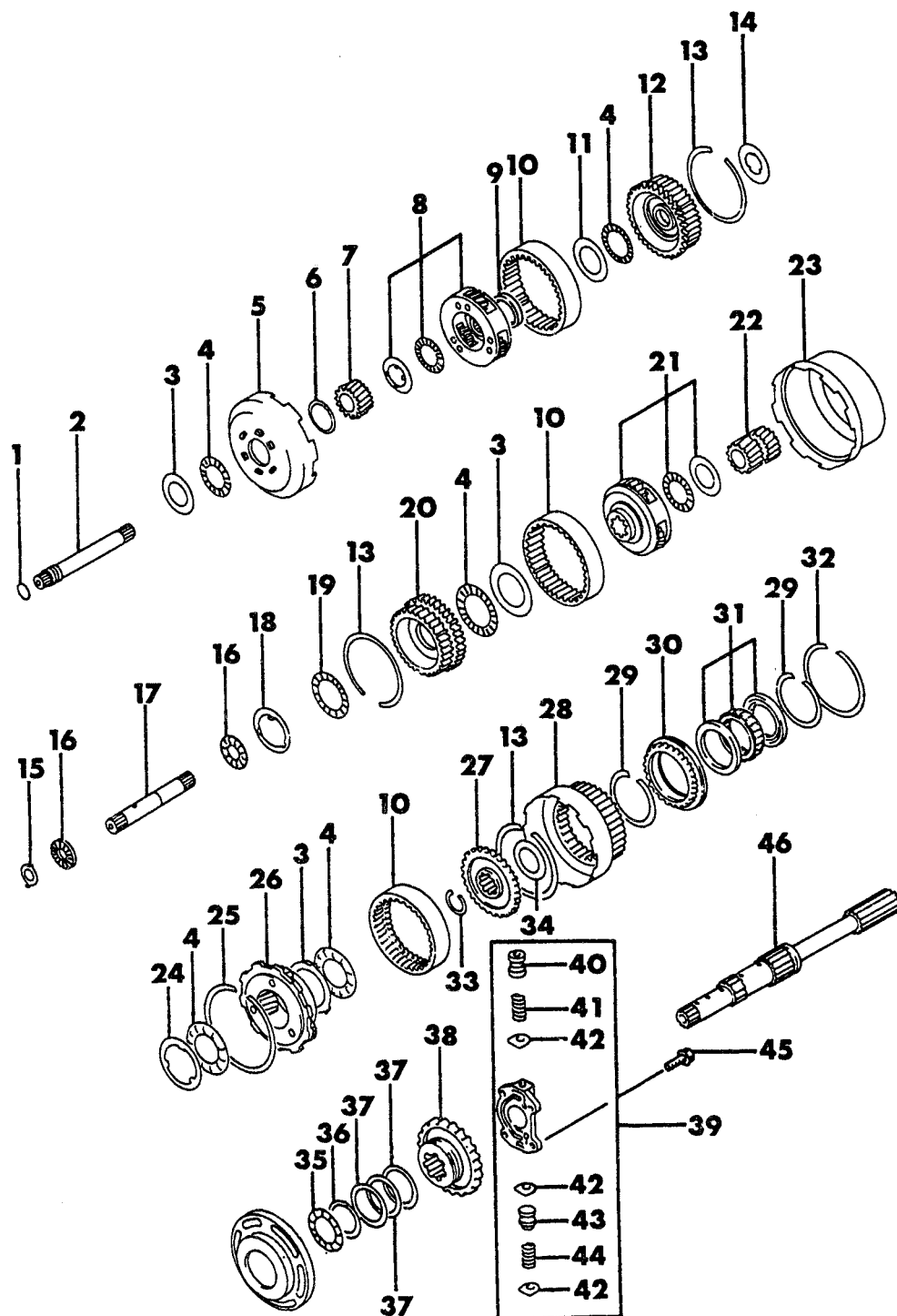
46	MD61 0731	1			SLEEVE, 3rd & 4th Shift
47	MD61 0512	2			BOLT, (M6x40)
48	MD61 0513	3			BOLT, (M6x25)
49	MD61 0511	2			BOLT, (M6x35)

<b>ENGINE:</b>	Q=1500 cc	A=2000 cc	<b>TRANS:</b>	A=Automatic	4=4-Speed Manual
Blank=All	K=1600 cc (w/o Balance Shaft)	F=2600 cc (Car)	Blank=All	M=All Manual	5=5-Speed Manual
	W=2600 cc (Truck)				8=4 x 2 Manual

<b>SERIES:</b>	H=High	<b>MODELS:</b>	24 FWD=2-Dr Hatchback (Colt)	27 RWD-4WD=Pickup (Ram 50, Power Ram 50)
L=Low	P=Premium		24 RWD=2-Dr Hatchback (Conquest)	27 4WD=Sport Utility (Raider)
M=Medium	S=Special		41 FWD=4-Dr Sedan (Colt & Eagle Vista)	45 FWD=4-Dr Station Wagon (Colt)
				45 FWD-4WD=Station Wagon (Vista)

AR=Use as Required      # =New Part Number      -- =Non Illustrated Part      Printed in U.S.A.      FEBRUARY, 1989

**7751 1700**



# 1987-88 IMPORT PARTS CATALOG

Figure 21A-1700  
Illus. Page 21A-67

TRANSMISSION, AUTO.

ITEM	PART NUMBER	QTY	BODY	MODEL	DESCRIPTION
GEAR, SUN, PLANET PINION AND OUTPUT SHAFT AUTOMATIC TRANSMISSION 24 RWD - CONQUEST					
1	MD61 0006	1			SEAL, O-Ring, (18.5), 1987
	MD61 0019	1			1988
2	MD61 0005	1			SHAFT, Input, 1987
	MD61 0017	1			1988
3	MD61 0403	3			RACE, Bearing
4	MD61 0404	5			BEARING, Thrust Needle
5	MD61 0405	1			SHELL, Connecting
6	MD61 0406	1			SNAP RING
7	MD61 0407	1			GEAR ASSEMBLY, Sun
8	MD61 0408	1			CARRIER ASSEMBLY, O/Drive Planet
9	MD61 0412	1			SLEEVE, Seal
10	MD61 0411	3			GEAR, Internal, 1987
	MD61 0473	3			1988
11	MD61 0421	1			RACE, Bearing, O/Drive Carr. Rear
12	MD61 0413	1			HUB, O/Drive Clutch, 1987
	MD61 0474	1			1988
13	MD61 0414	3			SNAP RING
14	MD61 0415	AR			RACE, Bearing, Front, 1.2
	MD61 0416	AR			1.4
	MD61 0417	AR			1.6
	MD61 0418	AR			1.8
	MD61 0419	AR			2.0
	MD61 0420	AR			2.2
15	MD61 0221	AR			RACE, Bearing, Rear, 1.2
	MD61 0222	AR			1.4
	MD61 0223	AR			1.6
	MD61 0224	AR			1.8
	MD61 0225	AR			2.0
	MD61 0226	AR			2.2
16	MD61 0300	2			BEARING, Thrust Needle
17	MD61 0050	1			SHAFT, Intermediate, 1987
	MD61 0064	1			1988
18	MD61 0450	1			BEARING, Thrust Washer
19	MD61 0466	1			RACE, Bearing
20	MD61 0451	1			HUB, Rear Clutch
21	MD61 0452	1			CARRIER ASSEMBLY, Front Planet, 1987
	MD61 0472	1			1988
22	MD61 0455	1			GEAR ASSEMBLY, Sun, 1987
	MD61 0477	1			1988
23	MD61 0456	1			SHELL, Connecting
24	MD61 0457	1			RACE, Bearing, Connecting Shell
25	MD61 0458	1			SNAP RING
26	MD61 0459	1			CARRIER ASSEMBLY, Rear Planet, 1987
	MD61 0475	1			1988
27	MD61 0461	1			GEAR, Internal Drive
28	MD61 0462	1			DRUM, Connecting, 1987
	MD61 0471	1			1988
29	MD61 0469	2			SNAP RING
30	MD61 0463	1			RACE, O.W.C. Outer
31	MD61 0464	1			CLUTCH ASSEMBLY, One Way, 1987
	MD61 0476	1			1988

<b>ENGINE:</b>	Q=1500 cc	A=2000 cc	<b>TRANS:</b>	A=Automatic	4=4-Speed Manual
Blank=All	K=1600 cc (w/o Balance Shaft)	F=2600 cc (Car)	Blank=All	M=All Manual	5=5-Speed Manual
	W=2600 cc (Truck)				8=4 x 2 Manual
<b>SERIES:</b>	H=High	<b>MODELS:</b>	24 FWD=2-Dr Hatchback (Colt)	27 RWD-4WD=Pickup (Ram 50, Power Ram 50)	
L=Low	P=Premium		24 RWD=2-Dr Hatchback (Conquest)	27 4WD=Sport Utility (Raider)	45 FWD=4-Dr Station Wagon (Colt)
M=Medium	S=Special		41 FWD=4-Dr Sedan (Colt & Eagle Vista)		45 FWD-4WD=Station Wagon (Vista)
AR=Use as Required	#=New Part Number	--=Non Illustrated Part	Printed in U.S.A.	FEBRUARY, 1989	

# 1987-88 IMPORT PARTS CATALOG

Figure 21A-1700  
Illus. Page 21A-68

TRANSMISSION, AUTO.

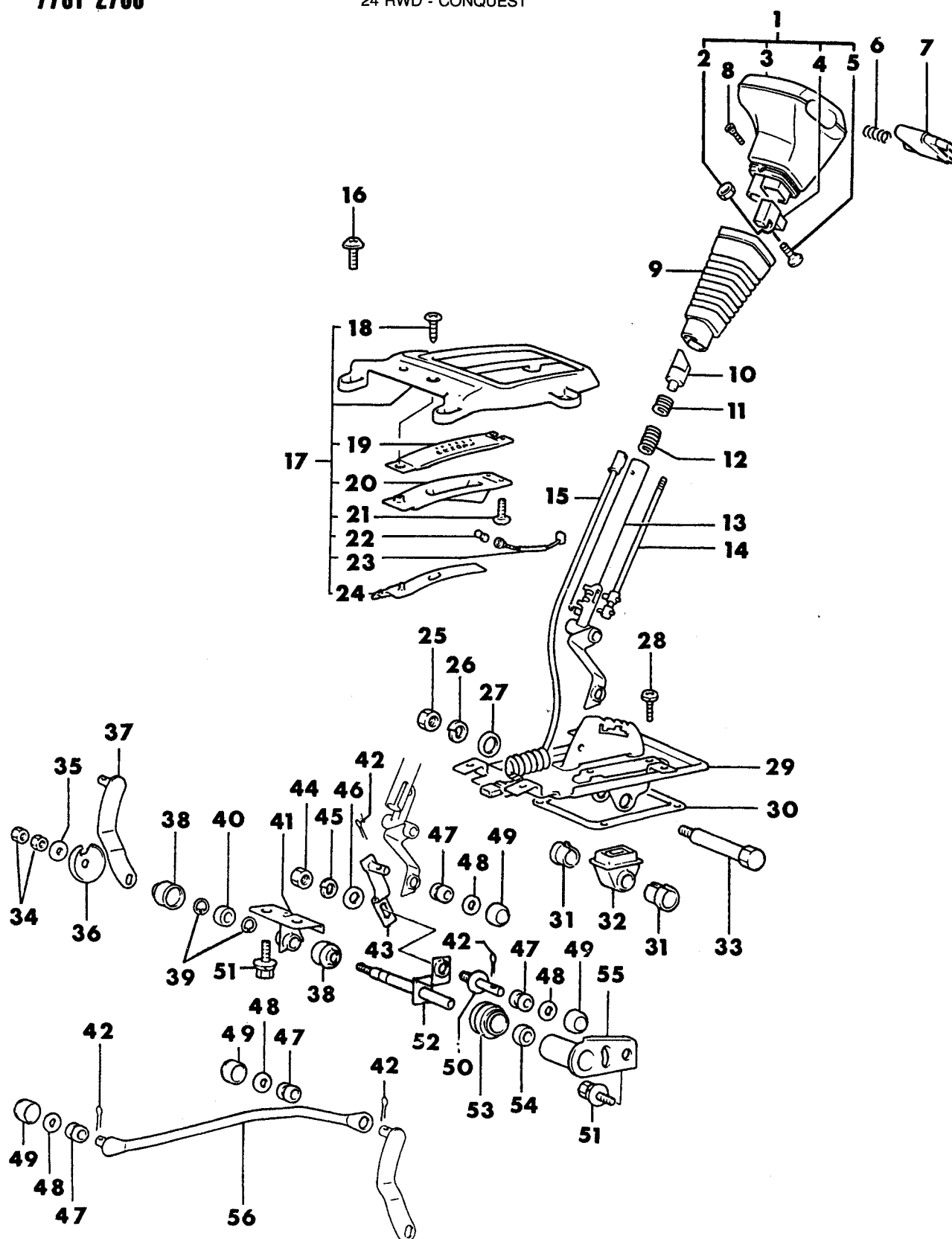
ITEM	PART NUMBER	QTY	BODY	MODEL	DESCRIPTION
------	-------------	-----	------	-------	-------------

## GEAR, SUN, PLANET PINION AND OUTPUT SHAFT AUTOMATIC TRANSMISSION 24 RWD - CONQUEST

32	MD61 0465	1			SNAP RING
33	MD61 0460	1			SNAP RING
34	MD61 0453	1			BEARING, Thrust Needle, R.C. Race
35	MD61 0450	1			BEARING, Thrust Needle
36	MD61 0466	1			RACE, Bearing
37	MD61 0467	3			SEAL RING, 1987
	MD61 0470	3			1988
38	MD61 0468	1			DISTRIBUTOR, Oil
39	MD61 0500	1			GOVERNOR ASSEMBLY
40	MD61 0501	1			VALVE, Governor Section
41	MD61 0502	1			SPRING, Governor Section
42	MD61 0503	3			PLATE, Retainer
43	MD61 0504	1			VALVE, Governor Primary
44	MD61 0505	1			SPRING, Governor Primary
45	MD61 0506	4			BOLT, (M6x16)
46	MD61 0508	1			SHAFT, Output, 1987
	MD61 0480	1			1988

<b>ENGINE:</b>		Q=1500 cc	A=2000 cc	<b>TRANS:</b>	A=Automatic	4=4-Speed Manual
Blank=All		K=1600 cc (w/o Balance Shaft)	F=2600 cc (Car)	Blank=All	M=All Manual	5=5-Speed Manual
		W=2600 cc (Truck)				8=4 x 2 Manual
<b>SERIES:</b>	H=High	<b>MODELS:</b> 24 FWD=2-Dr Hatchback (Colt)		27 RWD=4WD=Pickup (Ram 50, Power Ram 50)		
L=Low	P=Premium	24 RWD=2-Dr Hatchback (Conquest)		27 4WD=Sport Utility (Raider)		
M=Medium	S=Special	41 FWD=4-Dr Sedan (Colt & Eagle Vista)		45 FWD=4-Dr Station Wagon (Colt)		
				45 FWD=4WD=Station Wagon (Vista)		
AR=Use as Required		# =New Part Number	— =Non Illustrated Part		Printed in U.S.A.	FEBRUARY, 1989

CONTROLS, GEARSHIFT  
AUTOMATIC TRANSMISSION  
24 RWD - CONQUEST



# 1987-88 IMPORT PARTS CATALOG

Figure 21A-2700  
 Illus. Page 21A-109

TRANSMISSION, AUTO.

ITEM	PART NUMBER	QTY	BODY	MODEL	DESCRIPTION
CONTROLS, GEARSHIFT AUTOMATIC TRANSMISSION 24 RWD - CONQUEST					
1	MB36 7597	1			KNOB ASSEMBLY, (Black)
	MB36 7598	1			(D-Red)
2	MF43 0722	1			NUT, Jam (4)
3	MB36 7604	1			KNOB, (D-Red)
	MB36 7603	1			(Black)
4	MB36 7636	1			SWITCH, (Black)
	MB36 7637	1			(D-Red)
5	MF36 0744	1			SCREW, (4x10)
6	MB18 0151	1			SPRING
7	MB36 7468	1			BUTTON, Push, (D-Red)
	MB36 7622	1			(Black)
8	MF36 0023	2			SCREW, w/Washer (4x8)
9	MB36 7626	1			COVER, (Black)
	MB36 7627	1			(D-Red)
10	MB36 7339	1			SLEEVE
11	MB36 7609	1			SPRING
12	MB18 0149	1			SPRING
13	MB36 7582	1			LEVER, Shift
14	MB36 7584	1			ROD ASSEMBLY, (A) Shift Lever
15	MB36 7610	1			HARNES, O/D Switch
16	MF35 0792	4			SCREW, w/Washer, (6x16)
17	MB36 7589	1			PANEL ASSEMBLY, Indicator
18	MF45 3016	1			SCREW, Machine, (4x10)
19					INDICATOR, (Serv. in Assy.)
20					HOLDER, (Serv. in Assy.)
21					SCREW, Tapping, (4x10), (Serv. in Assy.)
22	MF82 0031	1			BULB, Lamp, (12V-1.7W)
23					SOCKET, (Serv. in Assy.)
24	MB36 7591	1			SLIDER
25	MF43 0122	1			NUT, (10)
26	MF45 0406	1			WASHER, Spring, (10)
27	MF45 0155	1			WASHER, Plain, (10)
28	MS20 0131	4			SCREW, w/Washer, (6x20)
29	MB36 7586	1			BRACKET ASSEMBLY
30	MA15 2161	1			PACKING
31	MA10 3547	2			BUSHING
32	MB01 3202	1			BOOT, Dust
33	MB30 7740	1			SHAFT
34	MF43 0726	2			NUT, Jam, (10)
35	MF45 0155	1			WASHER
36	MB30 7743	1			PROTECTOR
37	MB30 7735	1			LEVER
38	MB30 7796	2			BOOT
39	MB30 7791	2			SNAP RING
40	MT20 2944	1			BUSHING, Cross Shaft
41	MB30 7733	1			SUPPORT
42	MF47 2037	4			PIN, Split, (2x18)
43	MB30 7739	1			LEVER
44	MF43 0005	1			NUT, (8)
45	MF45 0405	1			WASHER, Spring, (8)
46	MF45 0005	1			WASHER, Plain, (8)

ENGINE: Q=1500 cc  
 Blank=All K=1600 cc (w/o Balance Shaft)  
 W=2600 cc (Truck)

A=2000 cc  
 F=2600 cc (Car)

TRANS: A=Automatic  
 Blank=All M=All Manual

4=4-Speed Manual  
 5=5-Speed Manual  
 8=4 x 2 Manual

SERIES: H=High L=Low M=Medium  
 P=Premium S=Special  
 MODELS: 24 FWD=2-Dr Hatchback (Colt)  
 24 RWD=2-Dr Hatchback (Conquest)  
 41 FWD=4-Dr Sedan (Colt & Eagle Vista)  
 27 RWD-4WD=Pickup (Ram 50, Power Ram 50)  
 27 4WD=Sport Utility (Raider)  
 45 FWD=4-Dr Station Wagon (Colt)  
 45 FWD-4WD=Station Wagon (Vista)

AR=Use as Required

# = New Part Number

- = Non Illustrated Part

Printed in U.S.A.

FEBRUARY, 1989

# 1987-88 IMPORT PARTS CATALOG

Figure 21A-2700  
 Illus. Page 21A-110

TRANSMISSION, AUTO.

ITEM	PART NUMBER	QTY	BODY	MODEL	DESCRIPTION
CONTROLS, GEARSHIFT					
AUTOMATIC TRANSMISSION					
24 RWD - CONQUEST					
47	MA10 3843	4			BUSHING
48	MF45 0154	4			WASHER, Plain, (8)
49	MA10 3844	4			BOOT
50	MA15 2162	1			PIN
51	MF24 3849	4			BOLT, w/Washer, (8x16)
52	MB30 7734	1			SHAFT, Cross
53	MT20 2945	1			BOOT
54	MT20 2944	1			BUSHING, Cross Shaft
55	MB30 7732	1			SUPPORT
56	MB30 7738	1			ROD

<b>ENGINE:</b>		Q=1500 cc	A=2000 cc	<b>TRANS:</b>	A=Automatic	4=4-Speed Manual
Blank=All		K=1600 cc (w/o Balance Shaft)	F=2600 cc (Car)	Blank=All	M=All Manual	5=5-Speed Manual
		W=2600 cc (Truck)				8=4 x 2 Manual
<b>SERIES:</b>	H=High	<b>MODELS:</b> 24 FWD=2-Dr Hatchback (Colt)		27 RWD=4WD=Pickup (Ram 50, Power Ram 50)		
L=Low	P=Premium	24 RWD=2-Dr Hatchback (Conquest)		27 4WD=Sport Utility (Raider) 45 FWD=4-Dr Station Wagon (Colt)		
M=Medium	S=Special	41 FWD=4-Dr Sedan (Colt & Eagle Vista)		45 FWD=4WD=Station Wagon (Vista)		
AR=Use as Required		# =New Part Number	-- =Non Illustrated Part		Printed in U.S.A.	FEBRUARY, 1989